

TERRA

Fabric Collection by Norman Wyatt Jr.

FREE pattern
available on
our website,
pbtex.com



Santa Fe quilt by Alison Tudor Size: 66" x 72"



pbtex.com

Santa Fe

Quilt by Alison Tudor using the *Terra* fabric collection by Norman Wyatt Jr. for P&B Textiles

Size: 66" x 74"

Yardage

TERR 435 A	3/8 yard
TERR 435 AU	2 3/8 yards
TERR 435 B	3/8 yard
TERR 435 C	3/8 yard
TERR 435 LZ	3/8 yard
TERR 435 N	2 1/2 yards
TERR 435 O	3/8 yard
TERR 435 R	1 3/4 yards
TERR 435 T	1 1/2 yards
BACKING	4 yards of any <i>Terra</i> fabric

Cutting

From TERR 435 AU, cut:

- (4) 5 1/2" x 42" strips;
cut into 60 triangles using template A
- (13) 3 1/2" x 42" strips;
cut into (96) 3 1/2" x 5 1/2" rectangles
- (4) 5 1/2" border squares
- (4) 4 1/2" x 5 1/2" rectangles
- (8) 4 1/2" squares

From TERR R, cut:

- (6) 5 1/2" x 42" strips; cut into 64 triangles
using template A
- (8) 2 1/4" binding strips
- (4) 4 1/2" x 5 1/2" rectangles
- (8) 4 1/2" squares

From TERR N, cut:

- (20) 4" x 42" strips; cut into (192) 4" squares.
Cut each square in half diagonally to yield
384 triangles.

From TERR 435 T, cut:

- (13) 3 1/2" x 42" strips;
cut into (96) 3 1/2" x 5 1/2" rectangles

From each of TERR 435 A, B, C, LZ, and O; cut:

- (10) 4 1/2" squares (50 total; 2 are extra)
- (5) 4 1/2" x 5 1/2" rectangles (25 total; 1 is extra)

Making the Blocks

1. Make 96 copies of the paper-foundation pattern and trim the pattern to a comfortable size, leaving at least 1/4" around the outside cutting line.
2. Place a 435 AU 3 1/2" x 5 1/2" rectangle right side up on the blank (unmarked) side of the pattern. Make sure the fabric covers the entire area by at least 1/4" on all sides and pin in place. Place a 435 T rectangle on top the tan rectangle, right sides together. With the marked side of the paper foundation up and the fabrics on the bottom, sew on the line between areas 1 and 2.
3. Fold the paper pattern back and trim the seam allowance to 1/4". Open the fabrics so that both pieces are right side up and press.
4. Fold the paper back along the next seam line, between areas 2 and 3. Trim the fabric so that it extends 1/4" past the folded line. This trimming creates a straight edge upon which you can line up your next fabric piece, making the placement easier.
5. Place a 435 N triangle on top of the 435 T piece and sew on the line between areas 2 and 3. Flip open the triangle and press.
6. Repeat steps 4 and 5, adding 435 N triangles in numerical order until the pattern is completely covered with fabric pieces. Press the unit.
7. Use a rotary cutter to trim away the excess fabric around the block, leaving a 1/4" seam allowance all around the outer sewing line. The block should measure 4 1/2" x 5 1/2".



Paper Foundation Pattern

Quilt Top Assembly

8. Randomly join (16) $4\frac{1}{2}$ " squares to make a column measuring $4\frac{1}{2}$ " x $64\frac{1}{2}$ ". Make four columns.

9. Randomly join (16) $4\frac{1}{2}$ " x $5\frac{1}{2}$ " rectangles to make a column measuring $5\frac{1}{2}$ " x $64\frac{1}{2}$ ". Make two columns.

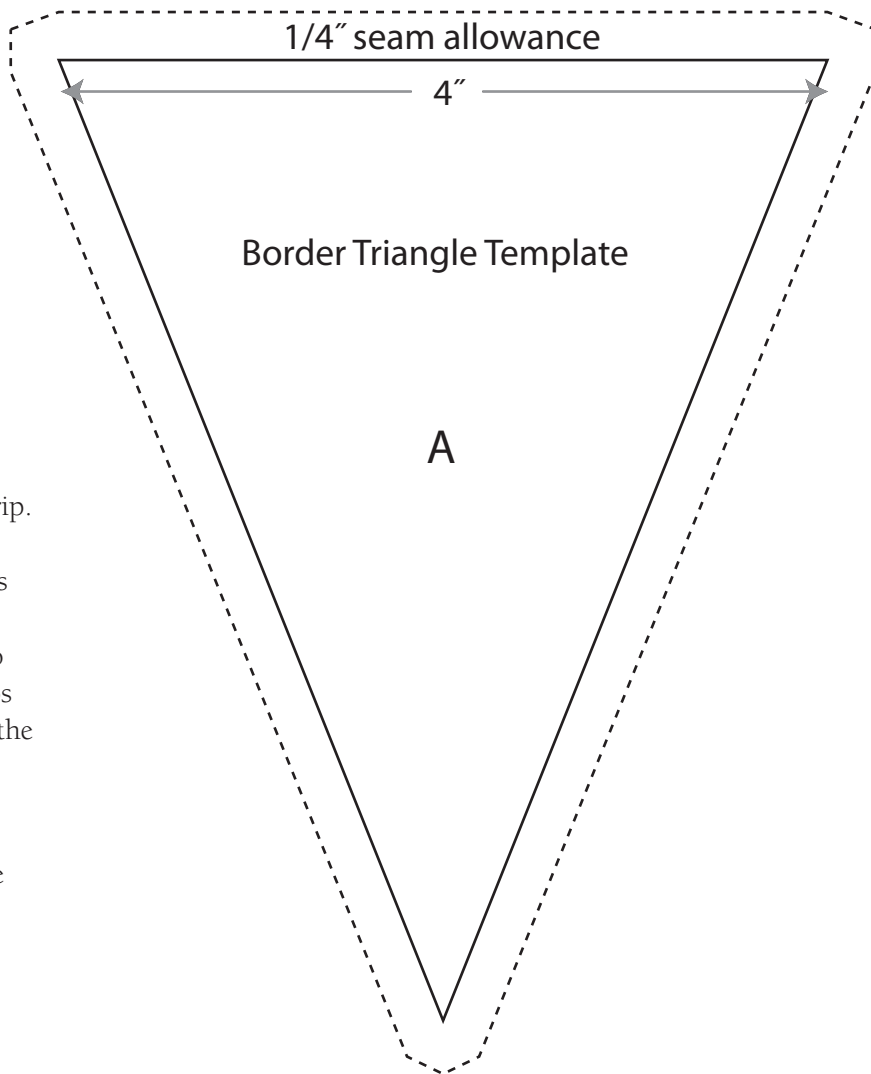
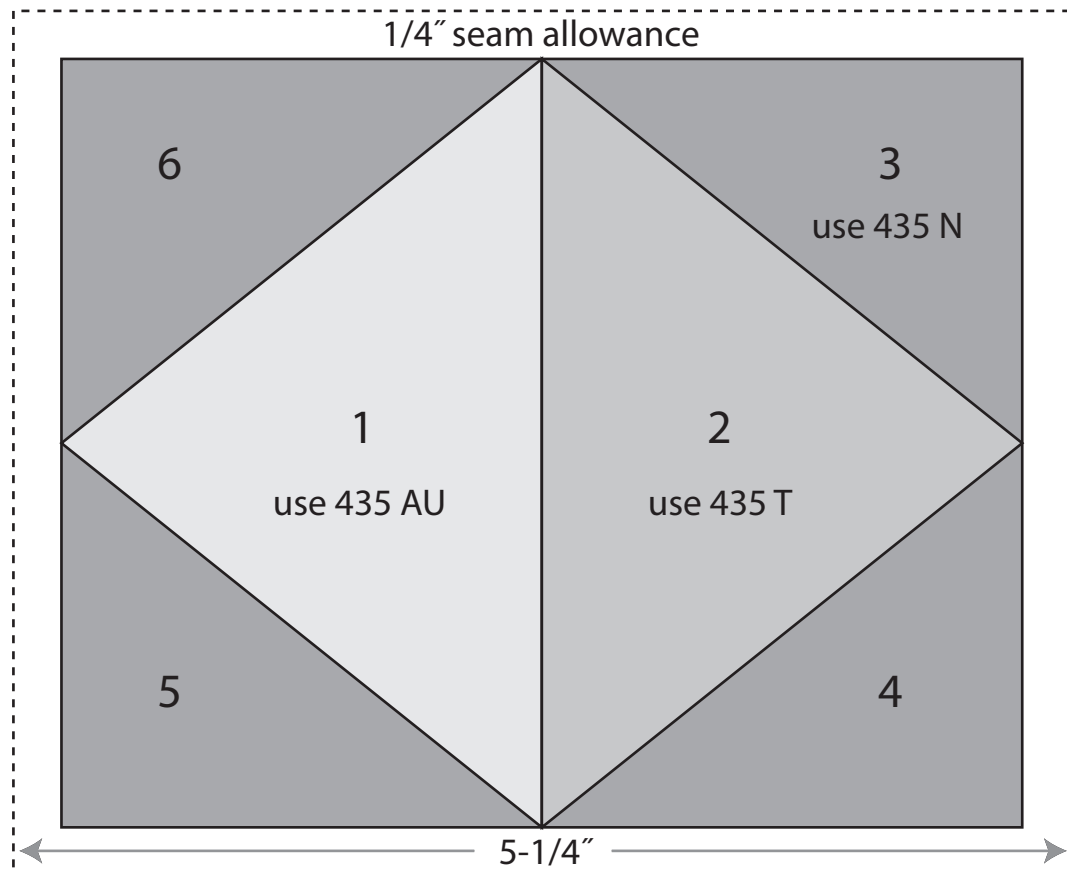
10. Join (16) paper-pieced blocks, rotating every other block as shown in the photo to make a column. The column should measure $5\frac{1}{2}$ " x $64\frac{1}{2}$ ". Make six columns.

11. Referring to the photo for placement guidance, join the columns from steps 8–10 to complete the quilt top center.

12. Join (17) 435 R triangles and (16) 435 AU triangles to make a side border strip. Trim the border strip to measure $64\frac{1}{2}$ " long, making sure to trim the red triangles equally on each end. Repeat to make a second side border strip. Sew the strips to the sides of the quilt center as shown in the photo.

13. Join (15) 435 R triangles and (14) 435 AU triangles to make a top border strip. Trim each border strip to measure $56\frac{1}{2}$ " long, making sure to trim the red triangles equally on each end. Sew a 435 AU $5\frac{1}{2}$ " square to both ends of the strip. Repeat to make a bottom border strip. Sew the strips to the top and bottom edges to complete the outer border.

14. Layer the quilt top with batting and backing; baste. Quilt as desired. Using the 435 R $2\frac{1}{4}$ "-wide binding strips, bind the edges to finish.



TERRA

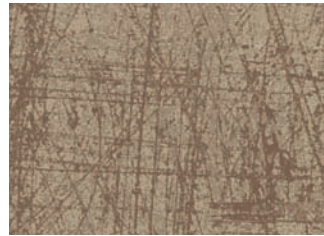
Fabric Collection by Norman Wyatt Jr.



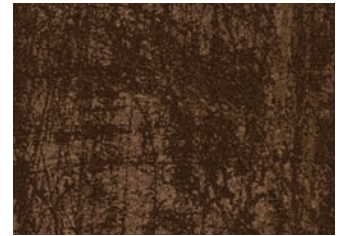
TERR 435 E



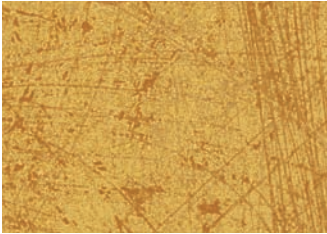
TERR 435 EZ



TERR 435 LZ



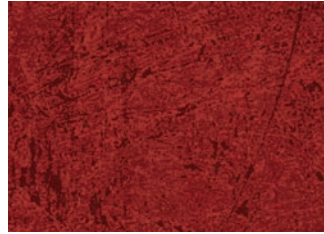
TERR 435 ZZ



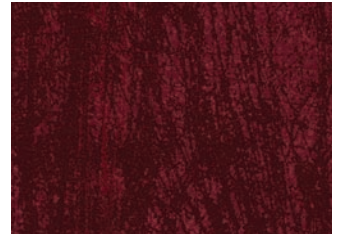
TERR 435 AU*



TERR 435 O



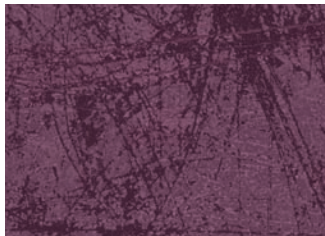
TERR 435 R



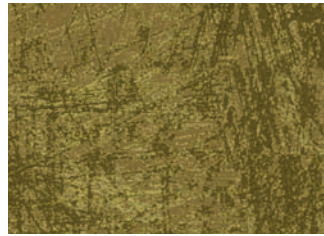
TERR 435 D



TERR 435 V



TERR 435 C



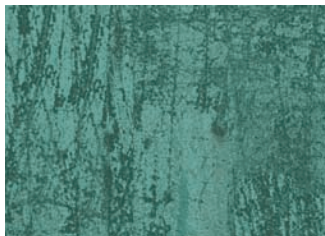
TERR 435 YG



TERR 435 A



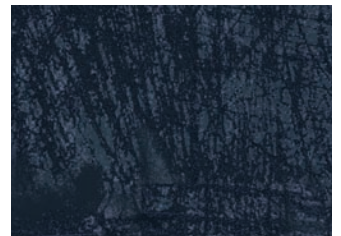
TERR 435 LB*



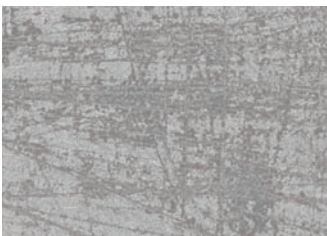
TERR 435 T



TERR 435 B



TERR 435 N



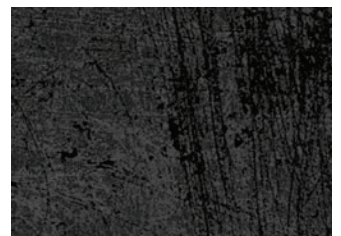
TERR 435 LS



TERR 435 S



TERR 435 Z*



TERR 435 K

*These colors are also part of the *Earthtones* collection.

P&B Textiles ♦ 1580 Gilbreth Road, Burlingame, CA 94010 ♦ 800-852-2327

For wholesale orders: 14683 Midway Road, Addison, TX 75001 ♦ 800-351-9087 ♦ www.pbtex.com



100% cotton ♦ Cold wash & dry ♦ 43"/44" ♦ Colors may vary due to printing process ♦ 9/12

All fabrics shown actual size.