

TIMELESS
TREASURES



BROOME STREET PATTERNS



Tonga Lace

Lilies In Lace quilt designed by Konda Luckau



Finished quilt size: 86 $\frac{1}{2}$ " x 86 $\frac{1}{2}$ "

Finished block size: 16"

Fabric Requirements

6 yards Tonga-B1471 Pale (background)

1/2 yard *each* for the main block fabrics:

Tonga-B2004 Beige
Tonga-B1828 Straw
Tonga-B2004 Cameo
Tonga-B1761 Neutral
Tonga-B9855 Nude
Tonga-B2008 Cream
Tonga-B2001 Sand
Tonga-B2009 Pearl

1/8 yard *each* for the border:

Tonga-B2003 Ivory
Tonga-B2003 Shell
Tonga-B2002 Vanilla
Tonga-B1394 Buff
Tonga-B2004 Foam
Tonga-B2005 Stone
Tonga-B1761 Bare
Tonga-B2006 Parchment

1/4 yard Tonga-B2007 Fair (cornerstones)

3/4 yard Tonga-B2010 Latte (star block)

3/4 yard Tonga-B2001 Linen (binding)

2²/₃ yards XTonga-B1391 Fluff (106" wide) or 6¹/₄ yards of
45"-wide Tonga print of your choice

94" x 94" batting

Cutting

From Tonga-B1471 Pale:

• Cut fifty-three 2¹/₂" x width-of-fabric (WOF) strips. Set aside thirteen strips. Sub-cut the following:

- Cut eight strips into 128 2¹/₂" squares.
- Cut eight strips into sixty-four 2¹/₂" x 4¹/₂" rectangles.
- Cut four strips into twenty 2¹/₂" x 6¹/₂" border sashing rectangles.

• Cut twenty strips into forty 2¹/₂" x 16¹/₂" sashing rectangles.
• Cut twelve 4¹/₂" x WOF strips. Cut nine strips in half. Cut three strips into sixteen 4¹/₂" x 6¹/₂" rectangles.

From each of the eight 1/2-yard Tonga fabrics:

- Cut four 2¹/₂" x WOF strips. Set one strip aside. Cut one strip in half. (One of the half strips won't be used.) Sub-cut the remaining two strips into twelve 2¹/₂" x 6¹/₂" rectangles.
- Cut one 4¹/₂" x WOF strip. Sub-cut the strip into two 4¹/₂" squares and four 2¹/₂" x 6¹/₂" rectangles.

From each of the eight 1/8-yard Tonga fabrics:

- Cut one 2¹/₂" x WOF strip. Cut the strip in half.

From Tonga-B2007 Fair:

• Cut three 2¹/₂" x WOF strips. Cut one strip in half. Sub-cut the remaining two strips into twenty-five 2¹/₂" squares for cornerstones.

From Tonga-B2010 Latte:

• Cut eight 2¹/₂" x WOF strips. Sub-cut the strips into 128 2¹/₂" squares.

From Tonga-B2001 Linen:

- Cut nine 2¹/₂" x WOF strips for binding.

Block Construction

Star Blocks

Note that the block units are referred to as Nine-patch even though they technically have only seven pieces, as the quilt is based on a standard Nine-patch block configuration.

1. Select sixteen B2004 Beige 2¹/₂" x 6¹/₂" rectangles, sixteen B1471 Pale 2¹/₂" squares and sixteen B2010 Latte 2¹/₂" squares. Draw a diagonal line on the back of all the 2¹/₂" squares.

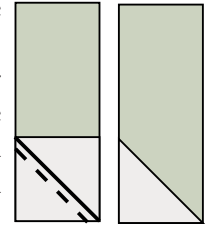


fig. 1

2. Place one B2010 Latte square at the lower end of a B2004 Beige rectangle noting the line direction. (figure 1) Sew on the marked line, trim the seam allowance to 1/4", and press the resulting triangle open. (figure 2)



fig. 2

3. Place one B1471 Pale square on the upper end of the pieced rectangle noting the line direction. (figure 3) Sew on the marked line, trim the seam allowance to 1/4", and press the resulting triangle open. (figure 4)

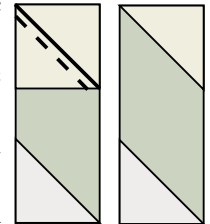


fig. 3

4. Repeat steps 1-3 to make eight units total as shown in figure 4.



fig. 4

5. Repeat steps 1-3 to make eight reversed units as shown in figure 5.



fig. 5

6. Sew together one unit and one reverse unit to make one Star Unit. Repeat to make eight Star Units. (figure 6)

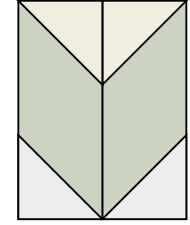


fig. 6-Star Unit

7. Repeat steps 1-6 to make eight Star Units *each* using the B1828 Straw, B2004 Cameo, B1761 Neutral, B9855 Nude, B2008 Cream,

B2001 Sand and B2009 Pearl 2¹/₂" x 6¹/₂" rectangles in combination with the B1471 Pale and B2010 Latte 2¹/₂" squares.

8. Sew together the long edges of one B2004 Beige 2¹/₂" x WOF strip and one B1471 Pale 2¹/₂" x WOF strip. Cut the strip set into sixteen 2¹/₂" x 4¹/₂" sections. (figure 7) Sew two sections together, alternating colors, to make one Four-patch Unit. Repeat to make eight B2004 Beige Four-patch Units total. (figure 8)

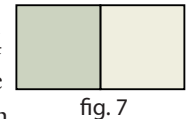


fig. 7

9. Sew together the long edges of one B2004 Beige 2¹/₂" half-strip and one B1471 Pale 4 1/2" half-strip. Cut the strip set into eight 2¹/₂" x 6¹/₂" sections. (figure 9)

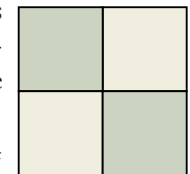


fig. 8

10. Sew one B2004 Beige Four-patch Unit, one 2¹/₂" x 4¹/₂" 1471 Pale rectangle and one 2¹/₂" x 6¹/₂" pieced section (from step 9) together. First sew the 2¹/₂" x 4¹/₂" rectangle to the right of the Four-patch Unit. (figure 10)

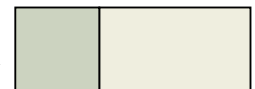


fig. 9

Then sew the 2¹/₂" x 6¹/₂" section to the bottom (figure 11) to make one 6¹/₂"-square Nine-patch Unit. Repeat to make eight B2004 Beige Nine-patch Units total.

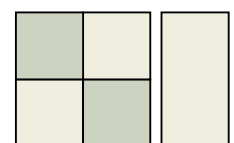


fig. 10

11. Repeat steps 8-10 to make eight Nine-patch Units from B1828 Straw, B2004 Cameo, B1761 Neutral, B9855 Nude, B2008 Cream, B2001 Sand and B2009 Pearl, in combination with the B1471 Pale.

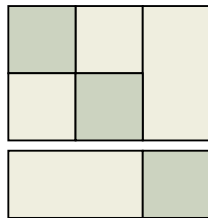


fig. 11

12. Using four B2004 Beige Nine-patch Units, four Star Units, and one B2004 Beige $4\frac{1}{2}$ " square, lay out one block as shown in figure 12. Sew the units into rows. Sew the rows together to make one $16\frac{1}{2}$ "-square block. Press seam allowances away from the Star Units. Repeat to make two B2004 Beige Star Blocks as shown in figure 13.

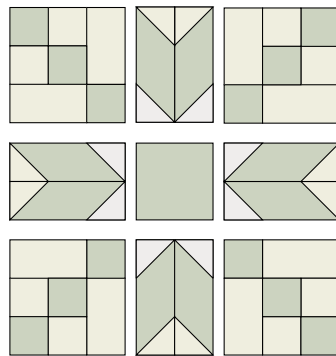


fig. 12

13. Repeat step 12 to make two Star Blocks *each* from B1828 Straw, B2004 Cameo, B1761 Neutral, B9855 Nude, B2008 Cream, B2001 Sand and B2009 Pearl components.

Border Units

14. Sew together the long edges of one B2003 Ivory $2\frac{1}{2}$ " half-strip and one B1471 Pale $4\frac{1}{2}$ " half-strip. Press seam allowance toward the B2003 Ivory. Cut the pieced strip into eight $2\frac{1}{2}$ " A sections as shown in figure 14.

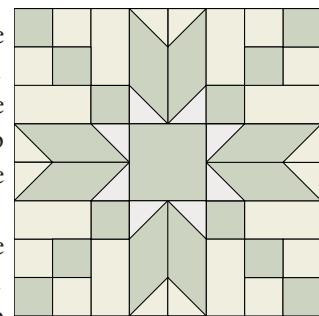


fig. 13-Star Block

15. Cut the following strips in half: one B2003 Ivory $2\frac{1}{2}$ " half-strip and one B1471 Pale $2\frac{1}{2}$ " half-strip. (One B2003 Ivory strip is not used.) Sew one B1471 Pale strip on either side of the 2003 Ivory strip. Cut into four $2\frac{1}{2}$ " B sections. (figure 15)

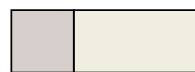


fig. 14-Section A

16. Sew together two A sections and one B section to make one $6\frac{1}{2}$ "-square Nine-patch Unit. (figure 16)

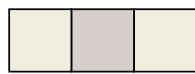


fig. 15-Section B

17. Repeat steps 15-16 to make four B2003 Ivory Nine-patch Units total.

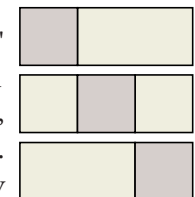


fig. 16

18. Select two Nine-patch Units and one $4\frac{1}{2}$ " x $6\frac{1}{2}$ " B1471 Pale rectangle. Sew the B1471 Pale rectangle between two Nine-patch Units, noting orientation, to make one Border Unit. (figure 17) Repeat to make two B2003 Ivory Border Units total.

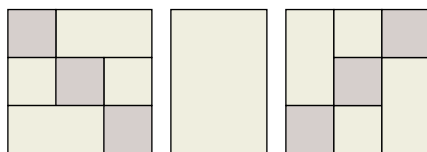


fig. 17

19. Repeat steps 15-18 to make two Border Units *each* from B2003 Shell, B2002 Vanilla, B1394 Buff, B2004 Foam, B2005 Stone, B1761 Bare and B2006 Parchment.

20. Repeat steps 14-16 to make four B2007 Fair/B1471Pale Nine-patch Units for the corners.

Quilt Top Assembly

21. Lay out the Star Blocks, sashing, Border Units and cornerstones following the Quilt Assembly Diagram and photo for color placement and orientation.

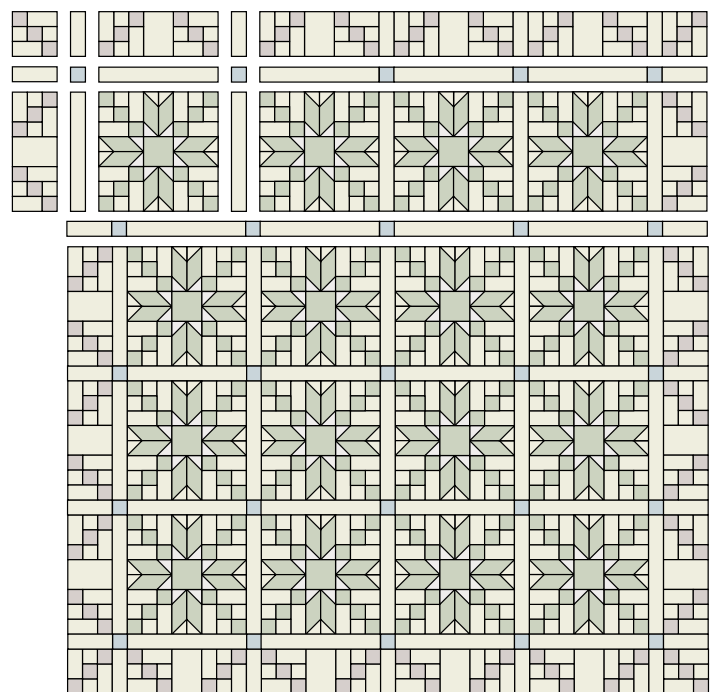
22. Sew the blocks into rows with B1471 Pale $2\frac{1}{2}$ " x $16\frac{1}{2}$ " sashing strips between the blocks, adding a Border Unit to each row end. Sew the rows together aligning adjacent seams.

Finishing

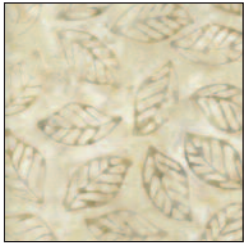
23. Layer the quilt top, batting and backing and quilt as desired.

24. Stitch the binding strips together end to end using diagonal seams. Fold and press the resulting long strip in half lengthwise with wrong sides together. Stitch to the quilt front, matching raw edges and mitering the corners.

25. Fold the binding to the quilt underside and hand-stitch the folded edge to the quilt back.



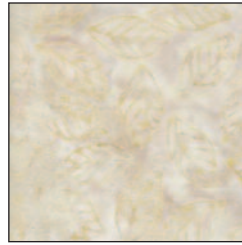
Quilt Assembly Diagram



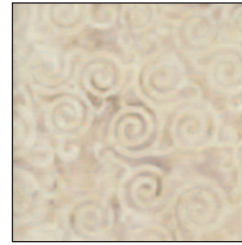
Tonga-B2004 Beige



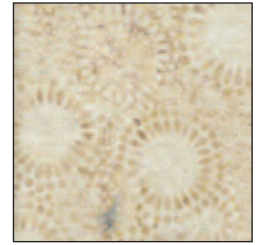
Tonga-B1828 Straw



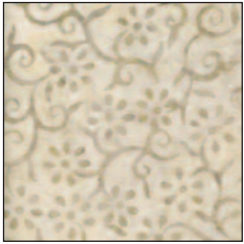
Tonga-B2004 Cameo



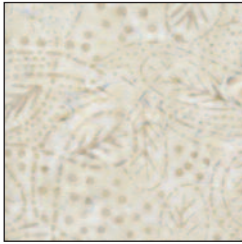
Tonga-B1761 Neutral



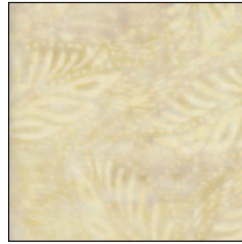
Tonga-B9855 Nude



Tonga-B2008 Cream



Tonga-B2001 Sand



Tonga-B2009 Pearl

Main Block Fabrics
1/2 yard each



Tonga-B2003 Ivory



Tonga-B2003 Shell



Tonga-B2002 Vanilla



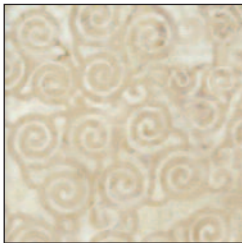
Tonga-B1394 Buff



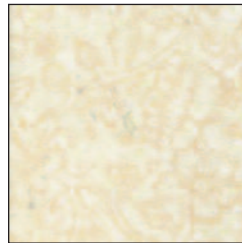
Tonga-B2004 Foam



Tonga-B2005 Stone



Tonga-B1761 Bare

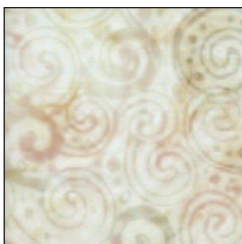


Tonga-B2006 Parchment

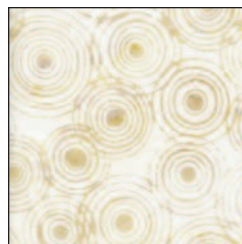
Border Fabrics
1/8 yard each



Tonga-B1471 Pale
Background
6 yards



Tonga-B2007 Fair
Cornerstones
1/4 yard



Tonga-B2010 Latte
Star Block
3/4 yard



Tonga-B2001 Linen
Binding
3/4 yard

ALL FABRICS SHOWN
25% OF ACTUAL SIZE.

©2013 Konda Luckau
www.moosequilts.com

Permission is granted to shop owners and teachers to make copies for promotional or educational purposes only.
This pattern may not be reproduced for commercial purposes (i.e. may not be sold).
This pattern may not be reproduced for ANY PURPOSE after September 30, 2014.