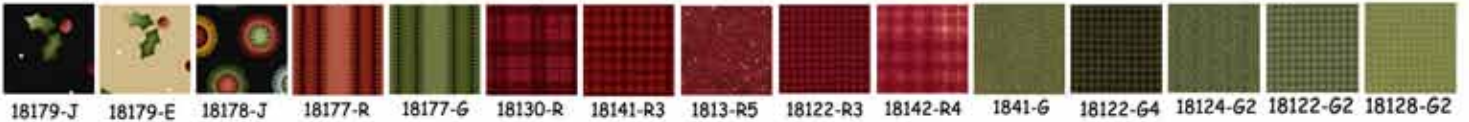


Pot holders

Finished size: 9" square



Here are some samples of 'Winter' pot holders that can be made from the small squares in the panel.



All of the pot holders require one fussy cut 3 1/2" motif square. MASF18173-Z panel

You will also need to cut the following for the borders, hanger, and backing of each pot holder: 2 - 1" x 3 1/2", 2 - 1" x 4 1/2", 2 - 1" x 8 1/2", and 2 - 1" x 9 1/2" strips, 1 - 2" x 5" piece, and 1 - 9 1/2" square for backing.

Star pot holder: (in addition to the above required pieces)

From background fabric:

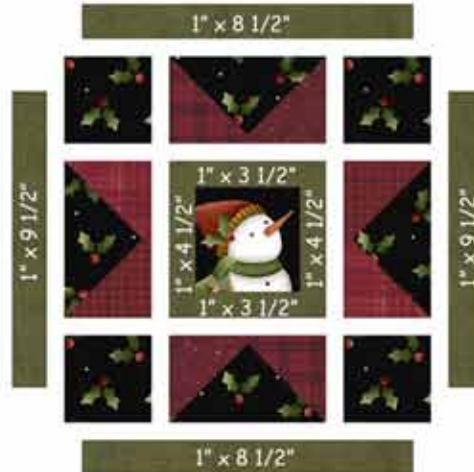
Cut 4 - 2 1/2" x 4 1/2" rectangles and 4 - 2 1/2" squares.

For the star points:

Cut 8 - 2 1/2" squares (I made it a little scapier and cut 2 - 2 1/2" squares from 4 different fabrics.)



make flying geese sections as shown above



sew pot holder top together as shown above

Checkerboard pot holder: (in addition to the above required pieces)

For the dark part of the checkerboard:

Cut 1 - 1 1/2" strip about 40" long

For the light part of the checkerboard:

Cut 1 - 1 1/2" strip about 40" long

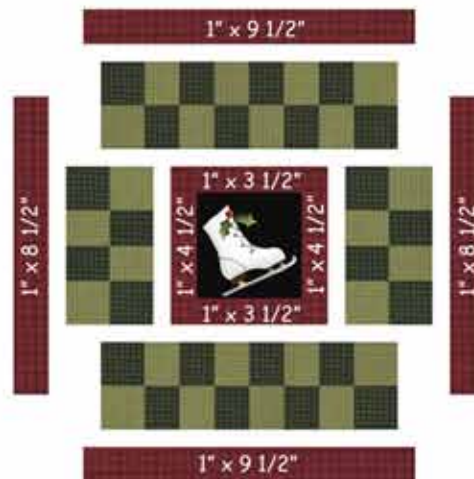
Sew dark and light strips together and cut apart into 24 - 1 1/2" sections as shown below.



Sew the 1 1/2" sections into strips as shown below.



sew two sets of each of these pieced sections



sew pot holder top together as shown above

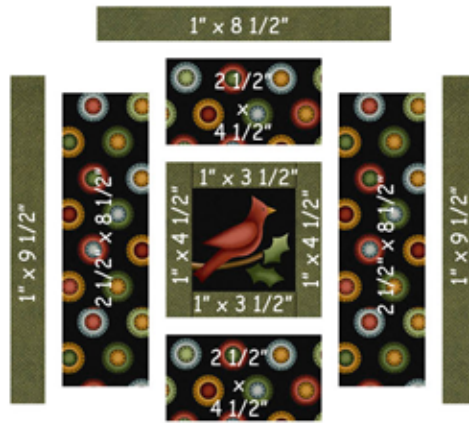
Framed pot holder: (in addition to the required pieces listed on the previous page)

From the main border fabric:

- Cut 2 - 2 1/2" x 4 1/2" and
- 2 - 2 1/2" x 8 1/2" rectangles.

To make hanger for pot holders:

Fold the long edges of the 2" x 5" piece of flannel to the center, wrong sides together - about 1/2" in on both sides. Fold in half lengthwise once again. Sew a seam close to the edge of the side with the two folded edges.



sew pot holder top together as shown above

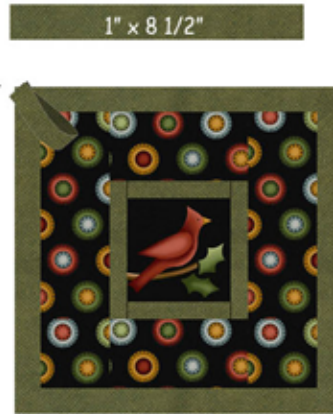
Finishing the pot holders:

Fold the hanging loop in half and place on the corner of the pot holder top that you want it to be.

Place a 9 1/2" square of batting on the backside of the pot holder top.

Place the backing over the pot holder top with right sides together.

Using a 1/4" seam, sew all the way around the three layers of the pot holder leaving an opening along one side for turning.



Trim away excess batting and fabric in corners. Turn right sides out and press. Sew opening closed and quilt as desired. You may only want to stitch in the ditch around the green borders.

Ornament/gift card holder or gift tags Finished size 4" square

To make the front of any ornament:

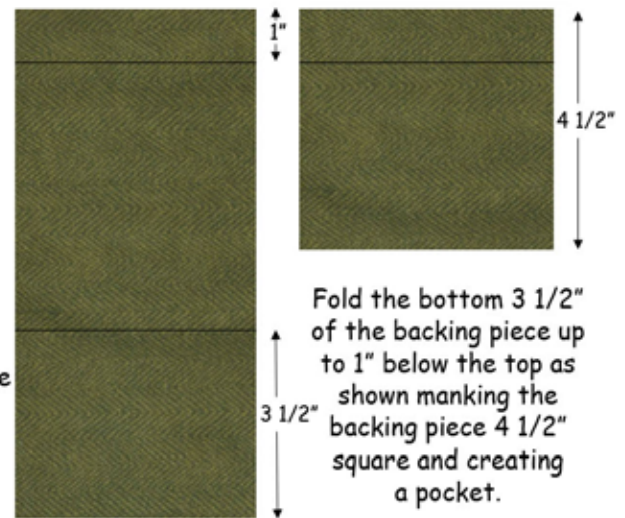
Fussy cut a 3 1/2" square centering a motif.

For border and backing cut 2 - 1" x 3 1/2", 2 - 1" x 4 1/2" strips and 1 - 4 1/2" x 9 1/2" piece.

Border the 3 1/2" fussy cut square with the 1" strips (just like you did for the pot holders).

Fold the backing piece to make a 2 1/2" pocket in the center of the back as shown.

Layer ornament back, front, and batting together just as you did for pot holders. If you want to put a folded 5" length of ribbon on for hanging do so now between the front and back of the ornament before you sew around the edges - 1/4" in from the edge and leaving an opening in the bottom for turning. You can put the hanging ribbon in the corner or on the center of a side. There is another option for hanging shown below. Trim excess from corners, turn right side out, sew opening closed, press, & stitch in the ditch around the border. ***



Coasters

Finished size 4" square



You can always bend a wire to the desired shape and whip stitch in place for another hanging option.

Now you can insert a note or gift card in the pocket in the back for an extra surprise!

Follow the directions for the ornaments but cut a 4 1/2" square for backing instead (so there is not pocket). And, no need to attach any form of hanger!

***If you are going to insert a gift card - do NOT stitch in the ditch around the green borders as the card will not fit in the pocket!

Let it Snow wall hanging - 17" x 21"

Fussy cut the 'Let it Snow' piece 11 1/2" x 15 1/2" MASF18173-Z

Fussy cut 4 - 2 1/2" squares of MASF18182-J (espresso with snowflakes) with a snowflake in the center, for corner stones

Cut 14 - 3" squares of MASF18130-R (red tonal tartan plaid) for half square triangles (a fat 1/8 - 10" x 18")

Cut 14 - 3" squares of MASF1879-J (espresso plaid) for half square triangles (a fat 1/8 - 10" x 18")

Cut 2 - 9 1/4" x 21 1/2" pieces, 2 - 1" x 12 1/2" strips, 2 - 1" x 15 1/2" strips, 2 - 1" x 17 1/2" strips, and 2 - 1" x 20 1/2" strips of MASF1841-G (green herringbone) for backing and borders (2/3 yard)

Assembly: (1/4" seam allowance unless otherwise indicated)

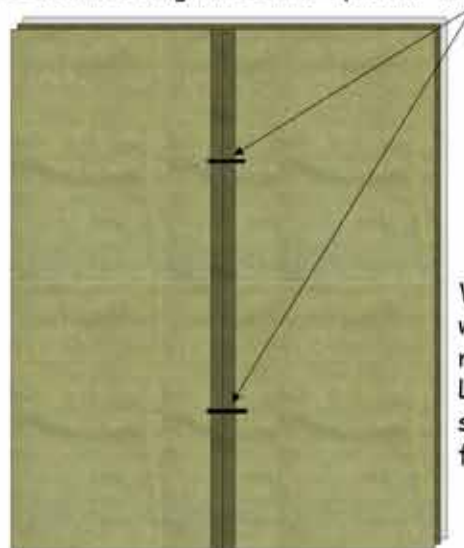
1. Using the 3" squares of red and espresso, make half square triangle blocks as shown. Draw a diagonal line on the back, sew 1/4" away from the drawn line on both sides of the line, cut apart on the drawn line and press. Press. Trim half square triangle blocks to 2 1/2".



2. Assemble wall hanging top as shown.



3. With right sides together, and using a 1/2" seam allowance, sew the 2 - 9 1/4" x 21 1/2" pieces for the backing together as shown leaving the center open for turning.



Wall hanging back & wall hanging front - right sides together. Layer batting on wrong side of wall hanging front.

4. Layer the wall hanging front and back with right sides together. Layer batting on the back side of the wall hanging front. Sew all the way around the layered pieces 1/4" in from the edges. Trim excess corner fabric and batting away. Turn piece right sides out through the opening in the back. Press. Sew opening closed. Quilt as desired.

Ice Skate wall hanging - 17" x 21"

Fussy cut the ice skate piece 11 1/2" x 15 1/2" MASF18173-Z

Fussy cut 4 - 2 1/2" squares of MASF18182-J (espresso with snowflakes) with a snowflake in the center, for corner stones

Cut 4 - 2 1/2" squares of each of the following green flannels for border squares:

MASF18124-G2 (green stitched herringbone)

MASF18122-G3 (green tiny houndstooth)

MASF1813-G (green tweed)

MASF18128-G2 (green basketweave)

MASF18127-G2 (green double windowpane)

MASF1841-G (green herringbone)

MASF18122-G2 (green tiny houndstooth)

Cut 56 - 1 1/2" squares of MASS18123-K (espresso check) for border squares (1/4 yard)

Cut 2 - 9 1/4" x 21 1/2" pieces, 2 - 1" x 12 1/2" strips, 2 - 1" x 15 1/2" strips, 2 - 1" x 17 1/2" strips, and 2 - 1" x 20 1/2" strips of MASF18130-R (red tonal tartan plaid) for backing and borders (2/3 yard)

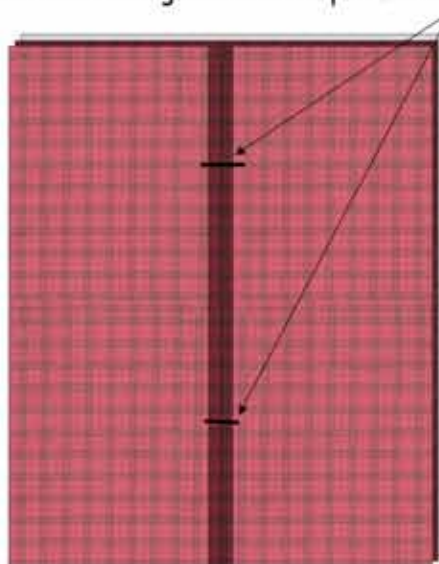
Assembly: (1/4" seam allowance unless otherwise indicated)

1. Make pieced border squares by snowballing off two opposite corners of each 2 1/2" green square with 2 - 1 1/2" espresso check squares as shown.

2. Assemble wall hanging top as shown.



3. With right sides together, and using a 1/2" seam allowance, sew the 2 - 9 1/4" x 21 1/2" pieces for the backing together as shown leaving the center open for the turning.



Wall hanging back & wall hanging front - right sides together. Layer batting on wrong side of wall hanging front.

4. Layer the wall hanging front and back with right sides together. Layer batting on the back side of the wall hanging front. Sew all the way around the layered pieces 1/4" in from the edges. Trim excess corner fabric and batting away. Turn piece right sides out through the opening in the back. Press. Sew opening closed. Quilt as desired.



Winter Wreath wall hanging - 30" square



Fussy cut the wreath motif to a 15 1/2" square

Fussy cut 4 - 3 1/2" motif squares featuring a heart, a cardinal, a tree, and a pair of mittens as shown to the left

Cut 8 - 2 1/2" squares of each of the following greens for piecing

MASF1841-G (green herringbone)

MASF18128-G2 (green basketweave)

MASF1813-G2 (green tweed)

MASF18127-G2 (green double windowpane)

Cut 32 - 2 1/2" x 4" pieces of **MASF18182-J** (black with white snowflakes) for piecing

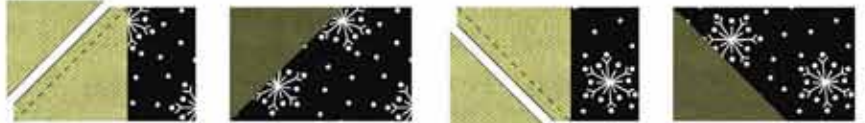
Fussy cut 4 - 3" x 32" strips of **MASF18176-J** (border stripe on black) for the wavy vine border. (1 yard)

Cut 2 - 1" x 24 1/2", 2 - 1" x 23 1/2", 2 - 1" x 16 1/2", 2 - 1" x 15 1/2", 4 - 1" x 4", and 4 - 1" x 3 1/2" strips of **MASF18122-R3** (dark red tiny houndstooth) for sashings. Also cut 4 - 2 1/2" strips across width of fabric for binding. (1/2 yard)

1 yard of **MASF18180-J** for backing

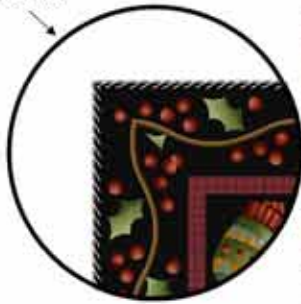
Assembly: (1/4" seam allowance)

1. Make pieced border by snowballing corners of each 2 1/2" - 4" rectangles of black with a green 2 1/2" square as shown. From each of the 4 different greens, make 4 blocks facing each direction as shown.

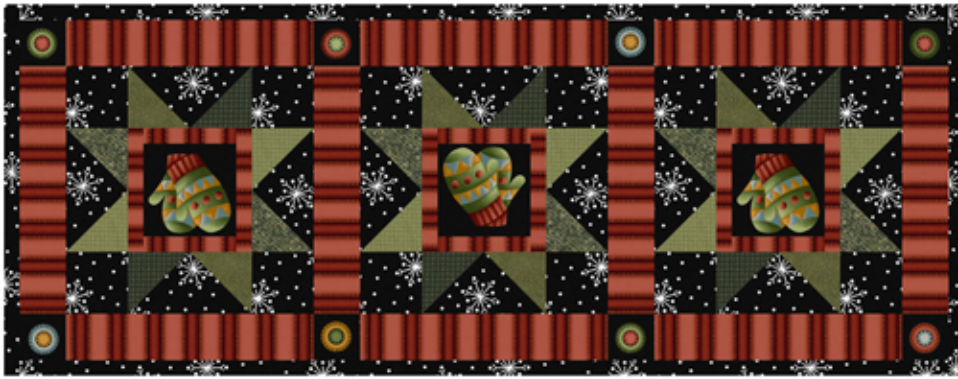


2. Assemble wall hanging top as shown.

Miter the corners of the holly vine strips as shown below.



3. Quilt as desired and bind.



Winter Mittens table runner

Finished size: 12" x 31"

Fussy cut 3 - 3 1/2" squares with the mitten motif centered.

Carefully fussy cut 8 - 2" squares centering the circle motif for the cornerstones. You should have just enough space between circles to cut these.

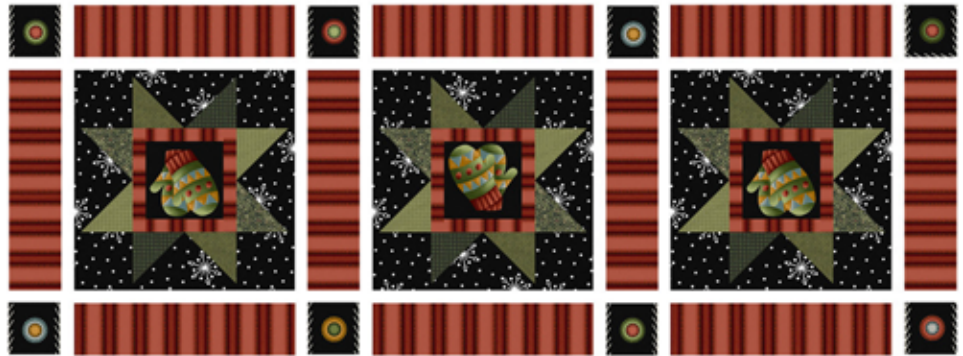
For the inner borders and sashing: Cut 6 - 1" x 3 1/2", 6 - 1" x 4 1/2", and 10 - 2" x 8 1/2" strips of MASF18177-R (red striped).

For the snowflake background, binding, and backing: Cut 12 - 2 1/2" squares & 12 - 2 1/2" x 4 1/2" rectangles for pieced blocks. Cut 3 - 2 1/2" strips across width of fabric for binding. Use the remaining fabric for backing. (1 yard)

For the green star 'points': Cut 24 - 2 1/2" squares of green (I mixed it up a little and cut 6 - 2 1/2" squares of four different greens).

Assembly: (1/4" seam allowance)

1. Make the pieced blocks following the directions for the Star pot holder.
2. Sew the table runner together as shown.
3. Quilt as desired and bind.



Gift Bags

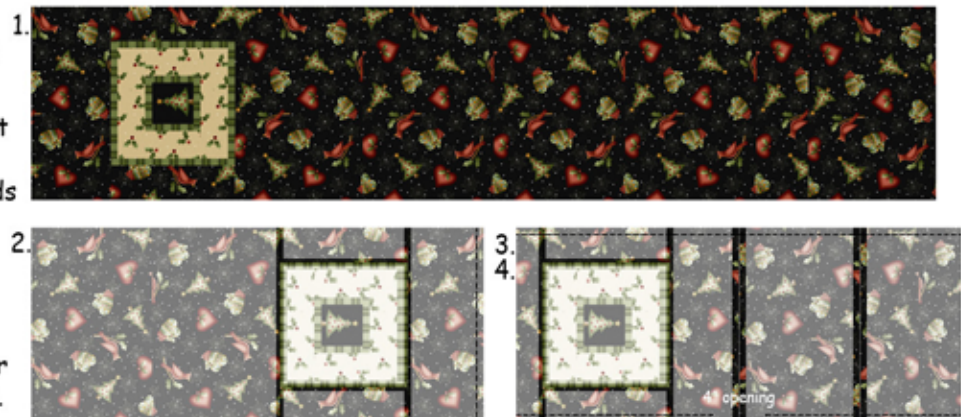
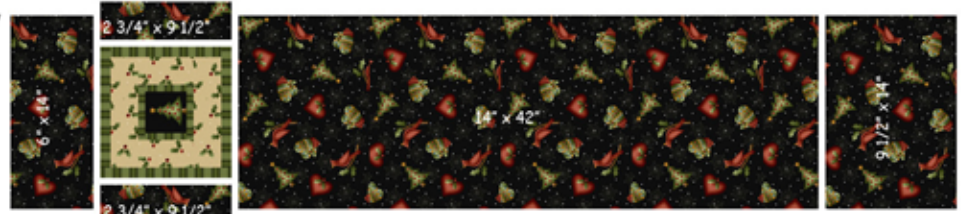
Finished size; 13" x 16"

For the body of the bag cut 1 - 14" x 42", 1 - 9 1/2" x 14", 1 - 6" x 14", and 2 - 2 3/4" x 9 1/2" pieces. (3/4 yard)

Use one of the pot holder tops for the embellishment of the gift bag.

Assembly: (1/4" seam allowance unless otherwise indicated)

1. Sew the pieces of the bag together as shown to the right.
2. Fold the table runner in half with right sides together. Finger press a crease to mark the center. Then sew the short ends together using a 1/2" seam allowance and backstitching at both ends of the seam. Press the seam open.
3. Now, fold the 'loop' so that the 1/2" seam is centered, lining up with the finger pressed center fold. Pin down both sides.
4. Sew one side leaving a 4" opening centered across the seam. Sew up the entire length of the other side.



5. Turn right side out through the hole. Press. Slip the lining half inside of the bag. Press around the top opening. Make sure to press the raw edges at the opening toward the inside. Stitch around the top of the bag opening 2" down from the edge. Sew around the top again, 1" down from the top edge, forming a 1" casing.

Thread a 1 yard length of 1" ribbon through the casing. Tie the two ends of the ribbon together. Pull the ribbon to gather and close the bag.



Winter Pillows

Finished size: 14" square



For either pillow you will need:

1 fussy cut 9 1/2" square for the center motif. MASF18173-Z panel

2 - 1" x 9 1/2" and 2 - 1" x 10 1/2" strips of MASF18128-G2 (green basketweave)

2 - 2 3/4" x 10 1/2" and 2 - 2 3/4" x 15" fussy cut strips of MASF18176-J (black border stripe)

1 - 15" square of a backing flannel of your choice.

Assembly: (1/4" seam allowance)

1. Assemble pillow top as shown above. First border the center motif square with the 1" strips of green and then with the fussy cut holly border strips.
2. Place a piece of batting behind the pillow top and stitch in the ditch on both sides of the green.
3. Place quilted pillow top and pillow back right sides together. (I also like to add a piece of batting to the back - it makes for a much smoother surface when stuffing.) Sew around the pillow leaving about a 4" opening on the bottom edge for turning and stuffing. (If you are using a pillow form you'll want to leave a much larger opening.)
4. Stuff pillow and sew opening closed.

These fussy cut 9 1/2" panel pieces used for the pillows can also be used as the decorative square on the gift bags.



PORTLAND
800.433.0722
503.284.4124

6000 N. Cutter Cir.
Portland, OR 97217
fax 503.288.4475



LOS ANGELES
800.237.6620
323.584.8820

4561 Maywood Ave
Vernon, CA 90058
fax 323.584.8847

www.maywoodstudio.com