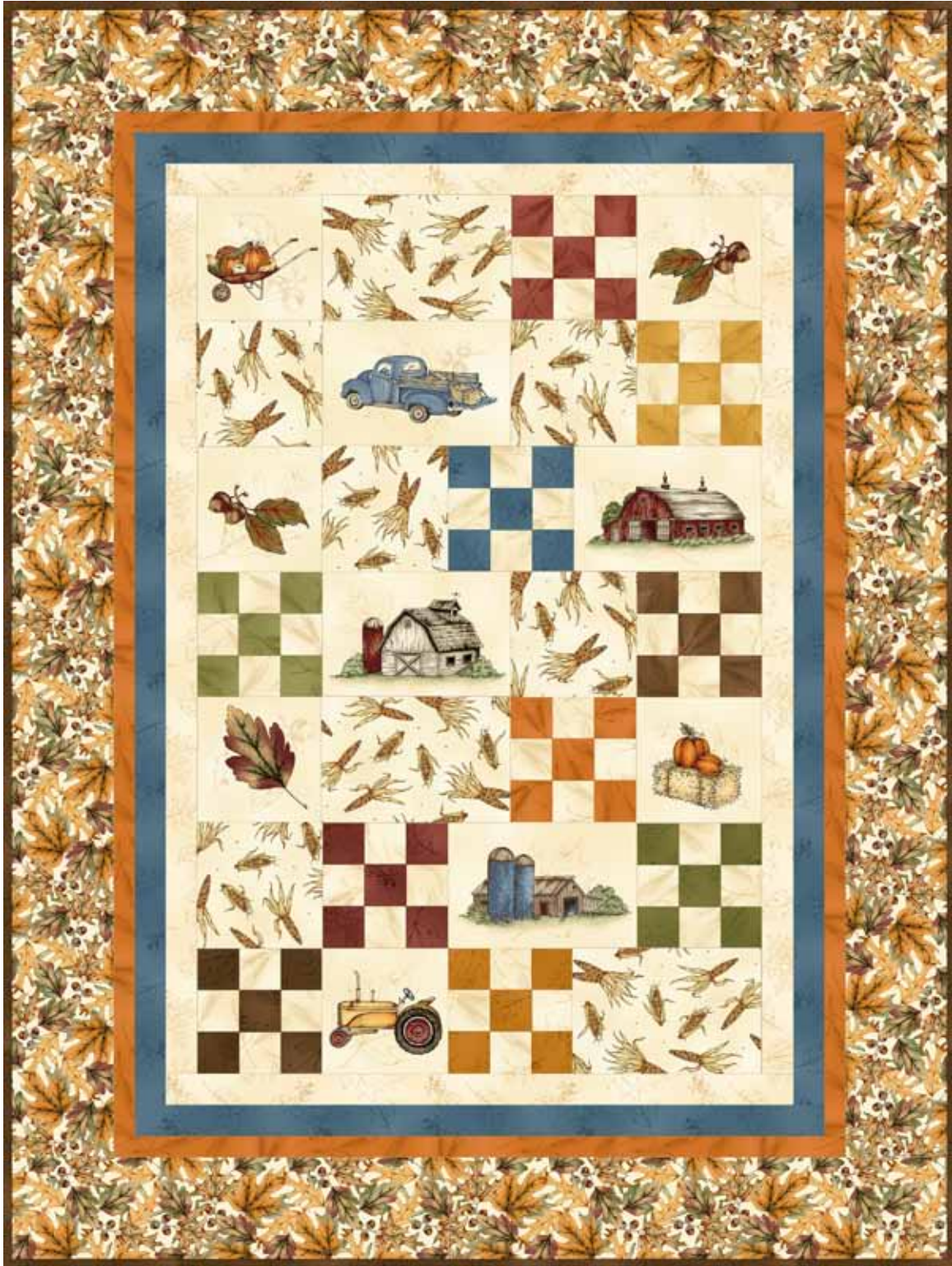


Fields of
GOLD

FIELDS OF GOLD

Quilt designed by Grace Wilson for Maywood Studio
Fields of Gold Maywood Studio designer fabric collection with Kris Lammers



finished size approx. 45" x 60"
6" Blocks


MAYWOOD STUDIO

PORTLAND
800.433.0722
503.284.4124

6000 N. Cutter Cir.
Portland, OR 97217
fax 503.288.4475



LOS ANGELES
800.237.6620
323.584.8820

4561 Maywood Ave
Vernon, CA 90058
fax 323.584.8847

www.maywoodstudio.com

FIELDS OF GOLD

Quilt designed by Grace Wilson for Maywood Studio

Fields of Gold Maywood Studio designer fabric collection with Kris Lammers

Cutting

Fabric 1 MAS16013-Z Panel
Fussy cut (6) 6-1/2" square motifs
Fussy cut (4) 6-1/2" x 9-1/2" rectangular motifs

Fabric 2 MAS16015-E Outer Border
Cut (4) 5" x 62" strips cut lengthwise
trim to correct sizes for borders

Fabric 3 MAS16016-E Setting Squares/Rectangles
Cut (2) 6-1/2" x 42" strips into
(5) 6-1/2" squares
(3) 6-1/2" x 9-1/2" rectangles

Fabric 4 MAS16017-A 9-Patch & Binding
Cut (1) 2-1/2" x 14" strip into
(5) 2-1/2" squares
Cut (6) 2-1/2" x 42" strips for binding
Piece for double binding

Fabric 5 MAS16017-B 9-Patch & Border 2
Cut (5) 2-1/2" x 2-1/2" squares
Cut (5) 2" x 42" strips into
(2) 2" x 45-1/2" for sides
(2) 2" x 33-1/2" for top and bottom

Fabric 6 MAS16017-E Border 1
Cut (5) 2" x 42" strips into
(2) 2" x 42-1/2" for sides
(2) 2" x 30-1/2" for top and bottom

Fabric 7 MAS16017-G 9-Patch
Cut (1) 2-1/2" x 14" strip into
(5) 2-1/2" squares

Fabric 8 MAS16017-R 9-Patch
Cut (1) 2-1/2" x 14" strip into
(5) 2-1/2" squares

Fabric 9 MAS16017-S 9-Patch
Cut (1) 2-1/2" x 14" strip into
(5) 2-1/2" squares

Fabric 10 MAS16018-A 9-Patch
Cut (1) 2-1/2" x 14" strip into
(5) 2-1/2" squares

Fabric 11 MAS1618-E 9-Patch Background
Cut (3) 2-1/2" x 42" strips into
(40) 2-1/2" squares

Fabric 12 MAS16018-G 9-Patch
Cut (1) 2-1/2" x 14" strip into
(5) 2-1/2" squares

Fabric 13 MAS16018-M 9-Patch & Border 3
Cut (5) 2-1/2" x 2-1/2" squares
Cut (5) 1-1/2" x 42" strips into
(2) 1-1/2" x 47-1/2" for sides
(2) 1-1/2" x 35-1/2" for top and bottom

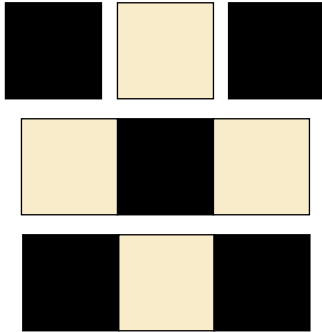
Fabric 14 MAS16018-R 9-Patch
Cut (1) 2-1/2" x 14" strip into
(5) 2-1/2" squares

Fabric 15 MAS16018-S 9-Patch
Cut (1) 2-1/2" x 14" strip into
(5) 2-1/2" squares

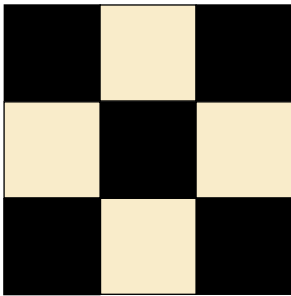
Construction

Nine-Patch Blocks

- Using five Fabric 11 squares and five Fabric 4 squares, sew the squares into rows as shown below using the following combinations:
 Fabric 11 ~ Fabric 4 ~ Fabric 11
 Fabric 4 ~ Fabric 11 ~ Fabric 4
 Fabric 11 ~ Fabric 4 ~ Fabric 11
 Press seams toward the dark fabric.



- Join the rows to make a 6-1/2" square block. Press toward the center.



- Make ten 9-Patch blocks following steps 1 & 2 and replacing Fabric 4 each time with five squares from the following fabrics:
 Fabric 5, Fabric 7, Fabric 8, Fabric 9, Fabric 10
 Fabric 12, Fabric 13, Fabric 14, Fabric 15
 This will give you a total of 10 9-Patch blocks.

Piecing the Quilt

- Using the quilt photo as a guide, sew the rows together using the following combinations of nine-patch blocks, panel squares/rectangles and setting squares/rectangles.

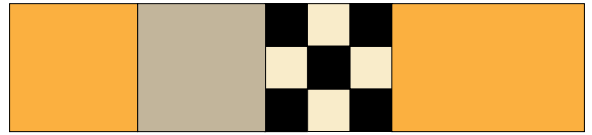
Row 1: Panel sq ~ Setting rect ~ 9-Patch ~ Panel sq



Row 2: Setting sq ~ Panel rect ~ Setting sq ~ 9-Patch



Row 3: Panel sq ~ Setting sq ~ 9-Patch ~ Panel Rect



Row 4: 9-Patch ~ Panel Rect ~ Setting sq ~ 9-Patch



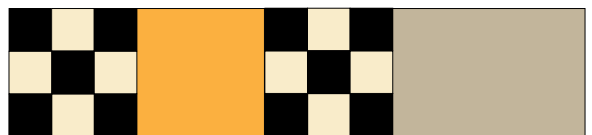
Row 5: Panel sq ~ Setting rect ~ 9-Patch ~ Panel sq



Row 6: Setting sq ~ 9-Patch ~ Panel rect ~ 9-Patch



Row 7: 9-Patch ~ Panel Sq ~ 9-Patch ~ Setting Rect



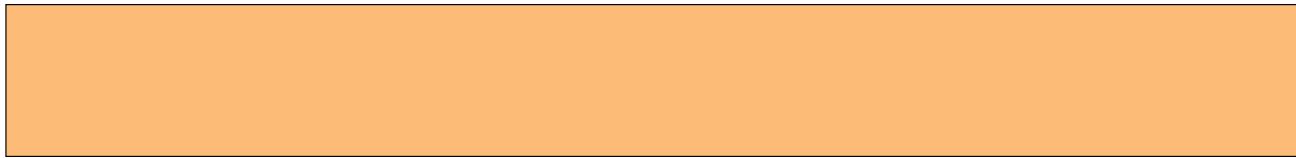
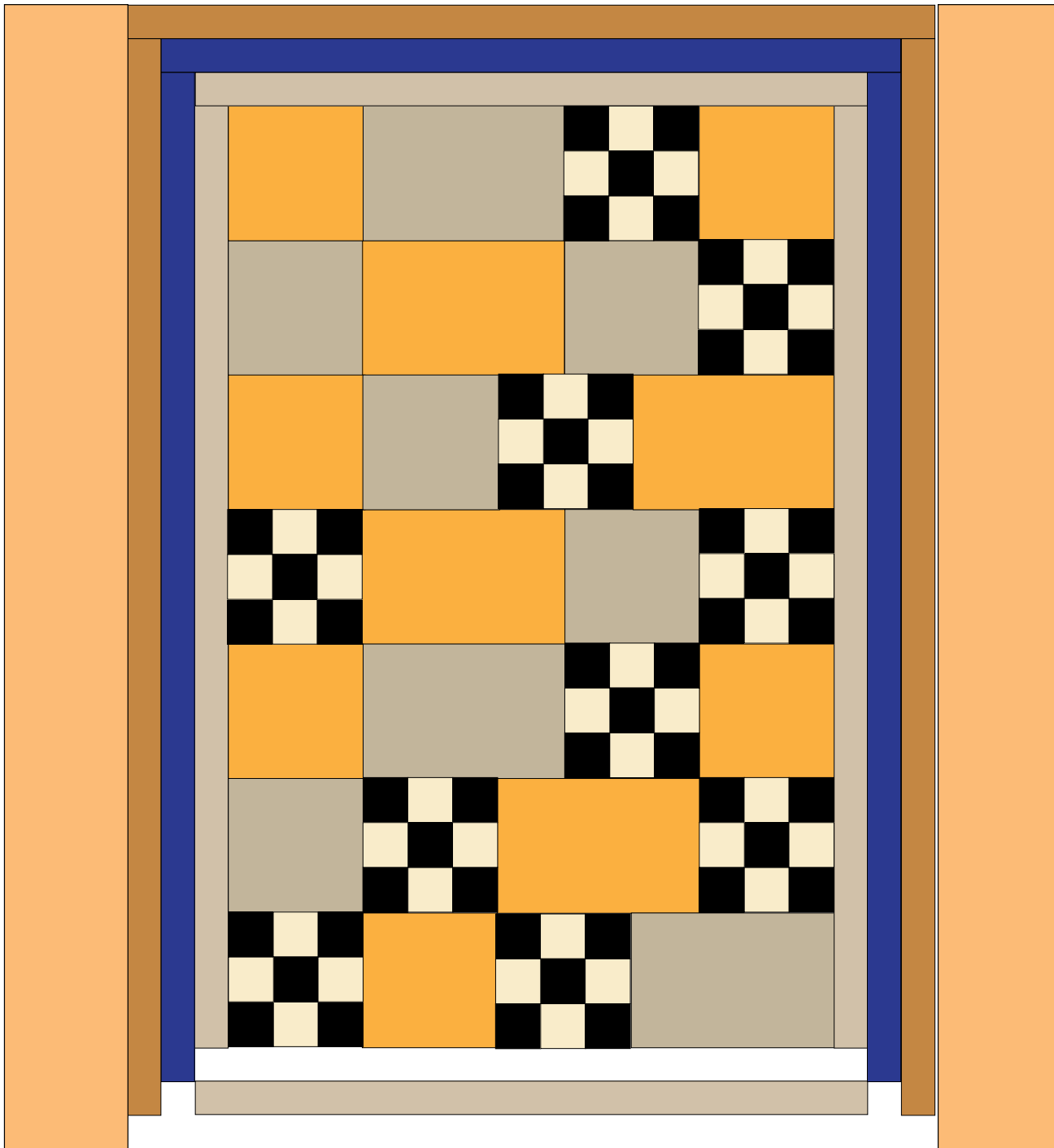
- Press the seams all one direction in a row, alternating the directions in each row.

Piecing the quilt top

6. Sew the rows together in order top to bottom (see diagram next page). Press the seams all one direction or open.
7. Using fabric 6 strips, piece Border 1 together to equal the length of one side of the quilt. Sew to the side of the quilt. Repeat for the other side. Press toward the borders. Repeat for the top and bottom of the quilt.
8. Using fabric 5 strips, repeat step 7 for Border 2.
9. Using fabric 13 strips, repeat step 7 for Border 3.
10. Using fabric 2 strips, repeat step 7 for Outer Border.

Finishing the Quilt

11. Piece and trim the backing at least 4" larger than the measurements of the quilt top. Layer the backing wrong side up, the batting and the quilt top right side up. Baste together then quilt as desired.
12. Join the binding ends with diagonal seams pressed open. Fold the binding in half, wrong sides together and press to make a double binding. Sew to the quilt with a 3/8" seam, mitering the corners.
13. Trim the excess batting and backing even with the quilt top. Turn the binding to the back side of the quilt and stitch down by hand with matching thread.



Fabric

Fields of GOLD



Fabric 1 Panel Squares & Rectangles
MAS16013-Z
1 panel repeat



Fabric 2 Outer border
MAS16015-E
1-3/4 yd.



Fabric 3 Setting Squares & Rectangles
MAS16016-E
1/2 yd.



Fabric 4 9-Patch and Binding
MAS16017-A
5/8 yd.



Fabric 5 9-Patch and Border 2
MAS16017-B
1/2 yd.



Fabric 6
MAS16017-E Border 1
3/8 yd.



Fabric 7 9-Patch
MAS16017-G
1/8 yd. OR (1) 3" x 42" strip



Fabric 8 9-Patch
MAS16017-R
1/8 yd. OR (1) 3" x 42" strip



Fabric 9 9-Patch
MAS16017-S
1/8 yd. OR (1) 3" x 42" strip



Fabric 10 9-Patch
MAS16018-A
1/8 yd. OR (1) 3" x 42" strip



Fabric 11 9-Patch and Background
MAS16018-E
1/3 yd.



Fabric 12 9-Patch
MAS16018-G
1/8 yd. OR (1) 3" x 42" strip



Fabric 13 9-Patch and Border 3
MAS16018-M
3/8 yd.



Fabric 14 9-Patch
MAS16018-R
1/8 yd. OR (1) 3" x 42" strip



Fabric 15 9-Patch
MAS16018-S
1/8 yd. OR (1) 3" x 42" strip

Backing
Your Choice
2-3/4 yds

Batting
Crib or Twin