

Flower Patch ~ Dark

Fat Quarter friendly quilt pattern by Bonnie Sullivan.

Flower Patch Flannel & Woolies Flannel by Bonnie Sullivan for Maywood Studio.



Finished size 60" x 72"

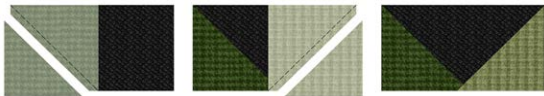


www.maywoodstudio.com

There are 2 different blocks in this quilt. Block size is 12½" (finished size – 12")

Block 1

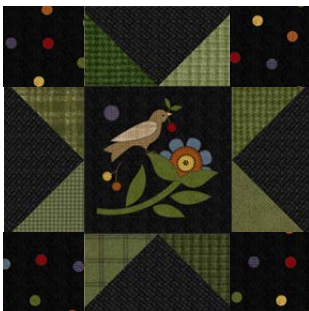
1. Use 60 of the 3½" x 6½" black rectangles and the (120) 3½" green squares to make flying geese blocks as shown below. Sew the green blocks onto the ends of the black rectangle on the drawn diagonal line. Cut away excess fabric and press open.



Sew 4 different color variations of flying geese blocks as shown – 15 of each flying geese block shown below.



2. Using the flying geese blocks from step 1, (15) 6½" fussy cut squares, and the (60) 3½" squares of dots, make 15 blocks as shown below.



Block 2

3. Use the remaining (60) 3½" x 6½" black rectangles and the (120) 3½" red squares to make the red flying geese blocks – 15 of each of the 4 different color combinations shown below.



4. Using the (32) 4" black squares and the (32) 4" green squares, make half square triangle blocks as shown. Sew on both sides of drawn diagonal line, cut apart on line, press, and trim finished half square triangle blocks to 3½".

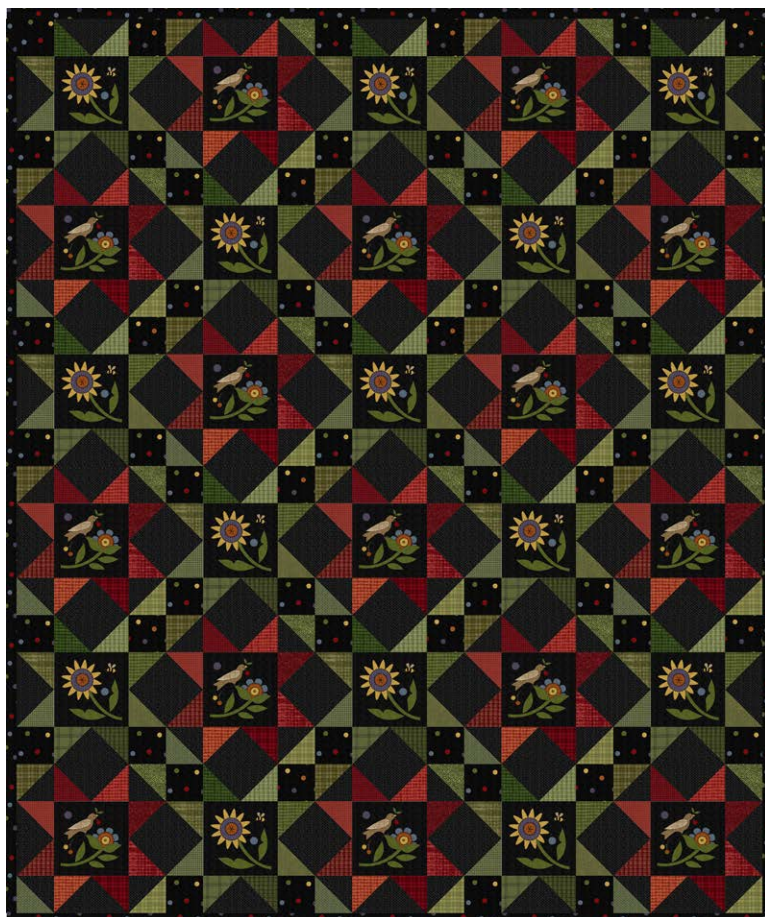


5. Using the flying geese blocks sewn in step 3, the half square triangle blocks sewn in step 4, and the remaining (15) 6½" fussy cut squares, sew 15 blocks as shown below.

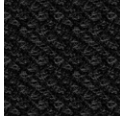



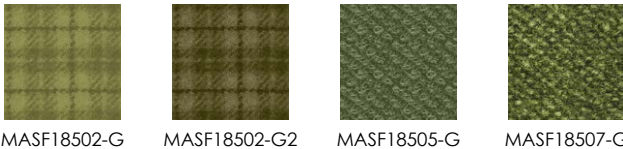



(You will have 4 extra 3½" green and black half square triangle blocks.)

6. Now sew the quilt together alternating blocks and arranging the center motif as pleases you.
Note: Depending on where the panel is cut into yardage, you may have a different combination of motif squares. Distribute the squares through the quilt accordingly.



7. Quilt as desired and bind.

FABRIC & YARDAGE		CUTTING
Background 2-1/2 yds	 MASF18505-J	Cut (20) 3-1/2" x WOF (Width Of Fabric) strips into (120) 3-1/2" x 6-1/2" rectangles. Cut (4) 4" x WOF strips into (32) 4" squares.
Flower Patch Squares 1-1/2 yds	 MASF88310-Z	Fussy cut (30) 6-1/2" squares, centering motifs.
Reds 1 FQ each		From each fabric: Cut (15) 3-1/2" squares. Draw a diagonal line on the back of each square.
Greens for 3-1/2" squares 1 Fat 1/4 each		From each fabric: Cut (15) 3-1/2" squares. Draw a diagonal line on the back of each square.
Greens for 4" squares 1 Fat 1/8 each		From each fabric: Cut (8) 4" squares. Draw a diagonal line on the back of each square.
Dots and Binding 1-1/8 yd	 MASF8312-J	Cut (5) 3-1/2" x WOF strips into (60) 3-1/2" squares Use remaining fabric for binding.
Backing 4-1/2 yds	YOUR CHOICE	