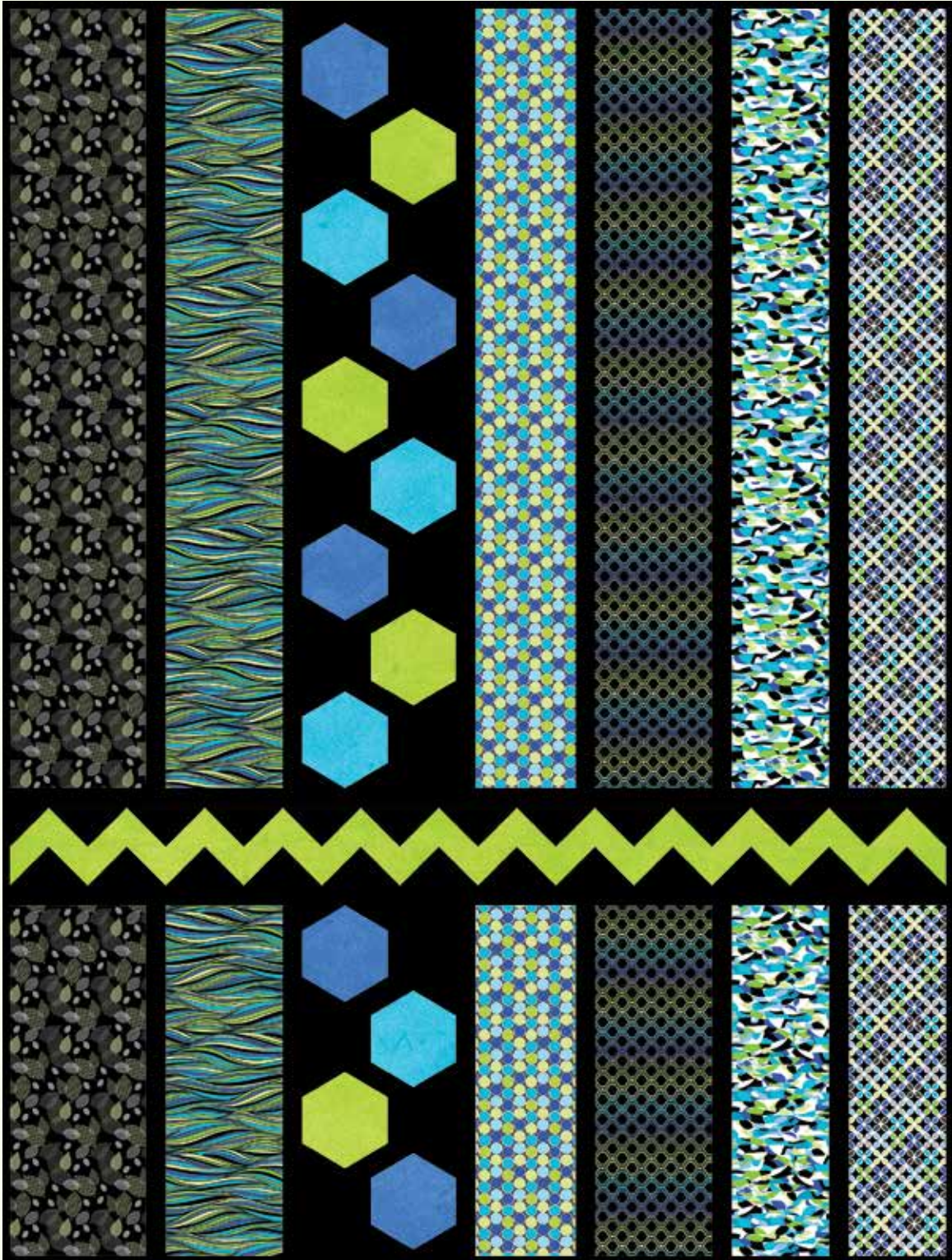


# MODERNE





# MODERNE

**Modern Vibe** quilt by Nancy Mahoney  
featuring the *Moderne* collection by P&B Textiles  
Quilt Size: 48" x 64"

## YARDAGE

Fabric A	<b>MODE 821 B</b>	1/2 yard
Fabric B	<b>MODE 822 B</b>	1/2 yard
Fabric C	<b>MODE 823 B</b>	1/2 yard
Fabric D	<b>MODE 824 G</b>	1/2 yard
Fabric E	<b>MODE 825 B</b>	1/2 yard
Fabric F	<b>MODE 826 B</b>	1/2 yard
Fabric G	<b>SUEB 300 LB*</b>	1/4 yard
Fabric H	<b>SUEB 300 LG*</b>	1/2 yard
Fabric I	<b>SUEB 300 T*</b>	1/4 yard
Fabric J	<b>CSNE K** (solid black)</b>	1 5/8 yards
Backing	<b>Any MODE fabric</b>	3 yards
Fusible web		1/2 yard

\* from the *Suede Brights* collection

\*\* from the *Color Spectrum* collection

## CUTTING

### From fabric A (MODE 821 B), cut:

- (1) 6 1/2" x 40 1/2" strip
- (1) 6 1/2" x 18 3/4" strip

### From fabric B (MODE 822 B), cut:

- (1) 5 1/2" x 40 1/2" strip
- (1) 5 1/2" x 18 3/4" strip

### From fabric C (MODE 823 B), cut:

- (1) 5 1/2" x 40 1/2" strip
- (1) 5 1/2" x 18 3/4" strip

### From fabric D (MODE 824 G), cut:

- (1) 7 1/2" x 40 1/2" strip
- (1) 7 1/2" x 18 3/4" strip

### From fabric E (MODE 825 B), cut:

- (1) 5 1/2" x 40 1/2" strip
- (1) 5 1/2" x 18 3/4" strip

### From fabric F (MODE 826 B), cut:

- (1) 6 1/2" x 40 1/2" strip
- (1) 6 1/2" x 18 3/4" strip

### From fabric G (SUEB 300 LB), cut:

- (6) hexagons prepared with fusible web

### From fabric H (SUEB 300 LG), cut:

- (1) 5 1/4" x 42" strip; cut into (6) 5 1/4" squares.  
Cut the squares into quarters diagonally to make 24 quarter-square triangles (1 is extra).
- (1) 2 7/8" square; cut in half diagonally to yield (2) half-square triangles
- (6) hexagons prepared with fusible web

### From fabric I (SUEB 300 T), cut:

- (6) hexagons prepared with fusible web

### From fabric J (CSNE K), cut:

- (1) 5 1/4" x 42" strip; cut into (6) 5 1/4" squares.  
Cut the squares into quarters diagonally to make 24 quarter-square triangles (1 is extra).
- (1) 10 1/2" x 40 1/2" strip
- (1) 10 1/2" x 18 3/4" strip
- (3) 1 1/2" x 42" strips. Piece the strips and cut (2) 1 1/2" x 48 1/2" strips.
- (4) 1 1/2" x 40 1/2" strips
- (4) 1 1/2" x 18 3/4" strips
- (6) 2 1/4" x 42" binding strips
- (1) 2 7/8" square; cut in half diagonally to yield (2) half-square triangles

## MAKING THE QUILT TOP

**1.** Join 11 fabric J quarter-square triangles and 12 fabric H quarter-square triangles to make a pieced strip. Add a fabric J half-square triangle to each end of the strip as shown in the diagram following step 3.

**2.** Join 11 fabric H quarter-square triangles and 12 fabric J quarter-square triangles as shown below to make a long pieced strip. Add a fabric H half-square triangle to each end of the strip.

**3.** Join the strips from steps 1 and 2 to make a zigzag row. Sew fabric J 48 1/2"-long strips to both long sides of the zigzag row.



**4.** Following the manufacturer's instructions, trace 18 hexagons onto the paper side of the fusible web. Roughly cut out each shape about  $\frac{1}{8}$ " outside the drawn lines. Fuse six hexagons onto the wrong side of fabric G. Fuse six hexagons onto the wrong side of fabric H and six hexagons onto the wrong side of fabric I. Cut out each hexagon on the traced line.

**5.** Remove the paper. Referring to the quilt photo for placement guidance, fuse nine hexagons onto the fabric J  $10\frac{1}{2}$ " x  $40\frac{1}{2}$ " strip, placing them about 1" from each long edge and at least  $\frac{1}{4}$ " from each short end. Use a matching color thread and the machine stitch of your choice to finish the raw edges.

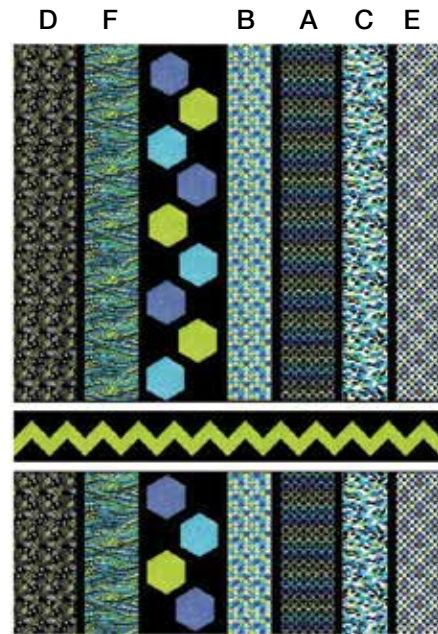
**6.** Repeat step 5 to appliqué four hexagons onto the fabric J  $10\frac{1}{2}$ " x  $18\frac{3}{4}$ " strip.

**7.** Referring to the quilt photo and layout diagram for placement guidance, join the fabric J  $11\frac{1}{2}$ " x  $40\frac{1}{2}$ " strips, the appliqué strip from step 5, and the  $40\frac{1}{2}$ "-long strips of fabrics A, B, C, D, E, and F to make the top section.

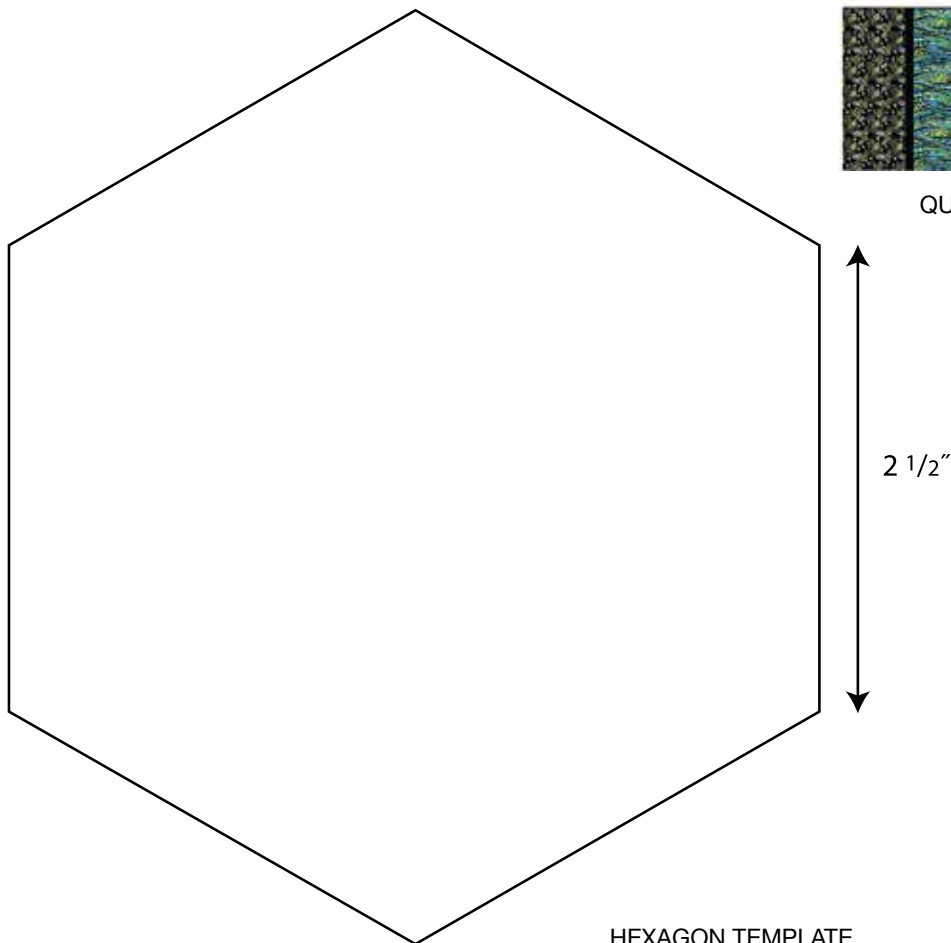
**8.** Join the fabric J  $11\frac{1}{2}$ " x  $18\frac{3}{4}$ " strips, appliqué strip from step 6, and the  $18\frac{3}{4}$ "-long strips of fabrics A, B, C, D, E, and F to make the bottom section.

**9.** Join the top section, zigzag row, and bottom section to complete the quilt top.

**10.** Layer the quilt top with batting and backing; baste. Quilt as desired. Using the fabric J strips, bind the edges to finish.

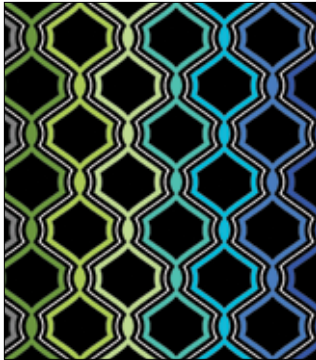


QUILT LAYOUT DIAGRAM



HEXAGON TEMPLATE





MODE 821 B



MODE 821 V



MODE 822 B



MODE 822 V



MODE 823 B



MODE 823 P



MODE 824 G



MODE 824 V



MODE 825 B



MODE 825 MU



MODE 826 B



MODE 826 V



MODE 827 G



MODE 827 V



**P&B Textiles** ♦ [www.pbtext.com](http://www.pbtext.com) ♦ 800-351-9087  
45-47 Washington St., Pawtucket, RI 02860 ♦ 237 W. 35th St., 11th floor, New York, NY 10001

△ 100% cotton ♦ Cold wash & dry ♦ 43" / 44" ♦ Colors may vary due to printing process  
All fabrics shown at 50% scale except where indicated otherwise.