

Designed By: Cyndi Hershey  
Finished Quilt Size: 53" x 64"



23897 H      23899 H      23900 H      23902 E



23902 H      23903 E      23903 H



23903 T      23899 E  
Backing

FABRIC REQUIREMENTS	
Design:	Yards
23897 H	one 24" panel
23899 H	$\frac{7}{8}$
23900 H	$\frac{3}{4}$
23902 E	$\frac{1}{3}$
23902 H	$\frac{5}{8}$
23903 E	1
23903 H	$\frac{5}{8}$
23903 T	$\frac{1}{3}$
23899 E (Backing)	$3\frac{1}{2}$

## Cutting Directions:

*Note: All strips are cut across the width of the fabric (selvage to selvage) unless noted otherwise.*

### A. 23897 H: Panel

*Note: Cut each block individually from panel centering motif within cut area. Blocks are nested tightly together on panel so be careful when measuring and cutting.*

- Cut two  $4\frac{3}{4}$ " x  $12\frac{3}{4}$ " floral/butterfly blocks.
- Cut six 5" x 6" cameo blocks.
- Cut three  $10\frac{1}{2}$ " x  $13\frac{1}{2}$ " large blocks.

### B. 23899 H: Green Floral

- Cut two  $2\frac{1}{2}$ " strips; subcut four  $2\frac{1}{2}$ " x  $9\frac{1}{2}$ " strips; four  $2\frac{1}{2}$ " x  $5\frac{1}{2}$ " strips and four  $2\frac{1}{2}$ " x 3" rectangles.
- Cut two 3" strip; subcut four 3" x 11" strips.
- Cut one  $3\frac{1}{2}$ " strip; subcut three  $3\frac{1}{2}$ " x 13" strips.
- Cut one  $4\frac{1}{4}$ " strip; subcut four  $4\frac{1}{4}$ " x 5" rectangles. Use remainder of strip to cut one  $3\frac{1}{2}$ " x 13" strip.
- Cut one 6" strip; subcut four 6" x  $6\frac{1}{2}$ " rectangles.

### C. 23900 H: Green Butterfly Print

- Cut five  $4\frac{3}{4}$ " strips. Use two strips to cut two  $4\frac{3}{4}$ " x  $37\frac{1}{4}$ " strips. Sew the remaining strips together end to end with diagonal seams; press. From this, cut two  $4\frac{3}{4}$ " x 47" strips.

### D. 23902 E: Ecru Tonal Damask

- Cut five  $1\frac{1}{2}$ " strips.

### E. 23902 H: Green Tonal Damask

- Cut four  $1\frac{1}{4}$ " strips; subcut four  $1\frac{1}{4}$ " x  $38\frac{1}{2}$ " strips.
- Cut seven  $1\frac{1}{2}$ " strips. Sew together end to end with diagonal seams; press. From this, cut two  $1\frac{1}{2}$ " x 53" strips and two  $1\frac{1}{2}$ " x 62" strips.

### F. 23903 E: Ecru Tonal Strip

- Cut five 2" strips; subcut two 2" x  $35\frac{1}{2}$ " strips; four 2" x 15" strips and two 2" x  $13\frac{1}{2}$ " strips.
- Cut nine  $2\frac{1}{2}$ " strips. Use two strips to cut two  $2\frac{1}{2}$ " x  $38\frac{1}{2}$ " strips. Sew the remaining strips together end to end with diagonal seams; press. From this, cut two  $2\frac{1}{2}$ " x 47" strips and two  $2\frac{1}{2}$ " x 58" strips.

### G. 23903 H: Green Tonal Strip

- Cut seven  $2\frac{1}{2}$ " strips for binding.

### H. 23903 T: Peach Tonal Strip

- Cut five  $1\frac{1}{2}$ " strips.

## Construction:

### Strip Sets:

1. Sew one each (D) and (H)  $1\frac{1}{2}$ " strips together to create a strip set. Press toward the (H) strip being careful to press from both the back and the front to avoid any pleating. Repeat to make five strip sets.

2. Cut (128) 1½" segments from the strip sets.



**Make 128**

### Corner Blocks (12½" x 13" finished)

1. Sew ten 1½" segments together to create a checkerboard strip; press. Repeat to make four bands.



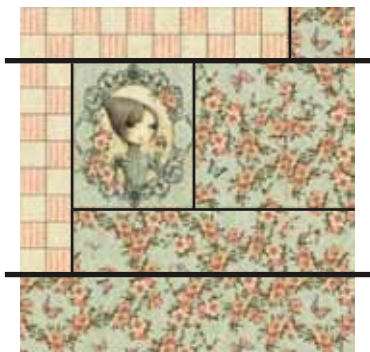
**Make 4**

2. Sew eight 1½" segments together to create a checkerboard strip; press. Repeat to make four bands.



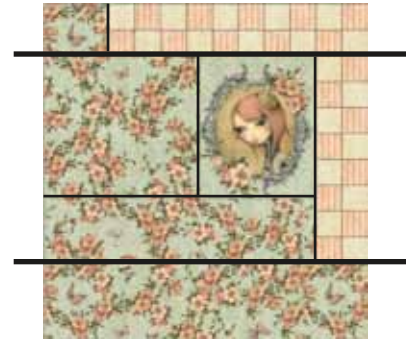
**Make 4**

3. To make the upper left block, sew together one of each checkerboard unit, one (A) cameo block, one (B) 2½" x 3" rectangle, one (B) 6" x 6½" rectangle, one (B) 3" x 11" strip and one (B) 3½" x 13" strip. Press.

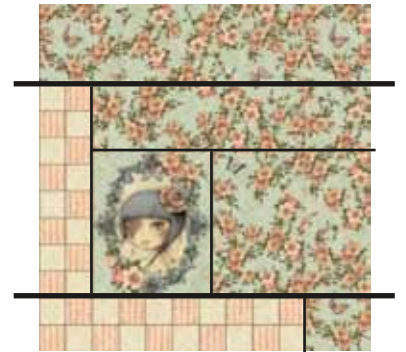


**Make 1 upper left block**

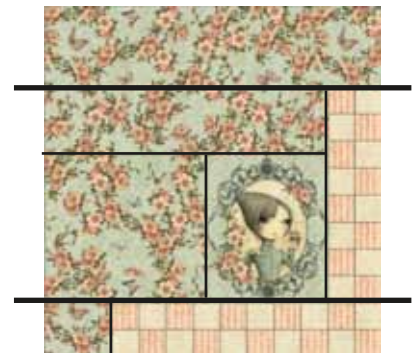
4. Continue to make upper right, lower left and lower right blocks in the same manner. Blocks are the same but are rotated so refer to diagrams for placement.



**Make 1 upper right block**



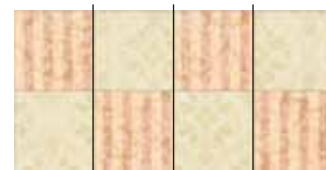
**Make 1 lower left block**



**Make 1 lower right block**

### Center Row Blocks (12½" x 13" finished):

1. Sew four 1½" segments together to create a checkerboard strip; press. Repeat to make eight bands.



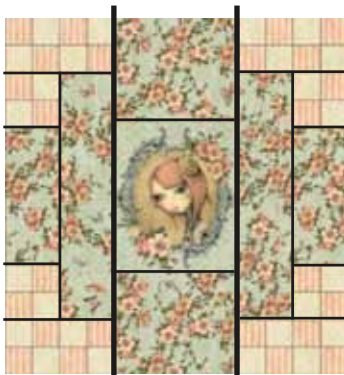
**Make 8**

2. Sew two 1½" segments together to create a four-patch unit; press. Repeat to make twelve units. Four units will be used in center border.



**Make 12**

3. To make one block, sew together four checkerboard units, four four-patch units, one (A) cameo block, two (B) 4¼" x 5" rectangles, two (B) 2½" x 9½" strips and two (B) 2½" x 5½" strips. Press. Repeat.



**Make 1**



**Make 1**

### Top Row:

1. Sew one (A) 10½" x 13½" block with the upper left and upper right corner blocks. Press toward the (A) block.



**Make 1 top row**

2. Sew one (F) 2" x 35½" strip to the top of the row. Press toward the strip.
3. Sew one (F) 2" x 15" strip to each end of the row. Press toward the strips.

### Center Row:

1. Sew one (A) 10½" x 13½" block between the two center blocks. Press toward the (A) block.
2. Sew one (F) 2" x 13½" strip to each end of the row. Press toward the strips.



**Make 1 center row**

### Bottom Row:

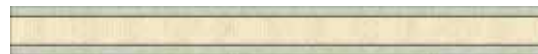
1. Sew one (A) 10½" x 13½" block with the lower left and lower right blocks. Press toward the (A) block.
2. Sew one (F) 2" x 35½" strip to the bottom of the row. Press toward the strip.
3. Sew one (F) 2" x 15" strip to each end of the row. Press toward the strips.



**Make 1 bottom row**

### Horizontal Sashing Rows:

1. Sew one (E) 1¼" x 38½" strip to both sides of one (F) 2½" x 38½" strip. Press toward the (E) strips. Repeat.



**Make 2**

2. Sew one sashing row between the top and center row. Press toward the sashing row. Sew remaining sashing row between the center row and the bottom row; press.



# Mirabelle



## Borders:

1. For inner left border, sew one (A)  $4\frac{3}{4}$ " x  $12\frac{3}{4}$ " block to the bottom of one (C)  $4\frac{3}{4}$ " x  $37\frac{1}{4}$ " strip. Press toward the strip. Sew to quilt and press toward border.
2. For inner right border, sew the remaining (A)  $4\frac{3}{4}$ " x  $12\frac{3}{4}$ " block to the top of the remaining (C)  $4\frac{3}{4}$ " x  $37\frac{1}{4}$ " strip; press. Sew to quilt and press toward border.
3. Sew one (C)  $4\frac{3}{4}$ " x 47" strip to the top and bottom of the quilt. Press toward borders.
4. For center border, sew one (F)  $2\frac{1}{2}$ " x 58" strip to both sides of the quilt. Press toward strips.
5. Sew one four-patch strip unit to both ends of one (F)  $2\frac{1}{2}$ " x 47" strip. Press toward strip. Repeat to make two borders. Sew one border to the top and bottom of the quilt. Press toward the strips.
6. Sew one (E)  $1\frac{1}{2}$ " x 62" strip to both sides of the quilt. Press toward the strips.
7. Sew one (E)  $1\frac{1}{2}$ " x 53" strip to the top and bottom of the quilt. Press toward the strips.

## Finishing:

1. Prepare backing with horizontal seams. Press.
2. Layer quilt top, batting and backing. Baste and quilt as desired.
3. Trim layers even with quilt top.
4. Prepare binding with (G)  $2\frac{1}{2}$ " strips. Sew binding to quilt using your preferred method.

*While all possible care has been taken to ensure the accuracy of this pattern, we are not responsible for printing errors or the way in which individual work varies.*