

SNOW FLAKE WONDER

Wonder of Winter Flannel by Maywood Studio



60" x 75" Quilt by Grace Wilson



www.maywoodstudio.com

SNOW FLAKE *Wonder*

Designed by Grace Wilson for Maywood Studio
Wonder of Winter Flannel by Maywood Studio
finished size approx. 60" x 75"

Cutting

Fabric A MASF3004-Z Snowflake 6" Squares

Fussy cut (12) 6-1/2" panel squares.

Fabric B MASF3006-E Deer with Stars Allover

Cut (4) 5-1/4" x 42" strips into:
(24) 5-1/4" squares

Cut each square diagonally once
to make (48) small triangles.

Fabric C MASF3005-B Deer in Trees Allover

Cut (5) 6-7/8" x 42" strips into:
(24) 6-7/8" squares

Cut each square diagonally once
to make (48) large triangles.

Fabric D option #1 MASF1841-T Herringbone OR

Fabric D option #2 MASF1813-E Tweed

Cut (3) 12-1/2" x 42" strips into:
(31) 3" x 12-1/2" strips for sashing

Fabric E* MASF3002-B Trees from Deer Stripe

Cut (2) 3" x 42" strips into:
(20) 3" squares.

Cut (7) 2-1/2" x 42" strips for the binding

Fabric F* MASF3002-B Deer from Deer Stripe

Cuts are parallel to the selvage:

- (2) 6-1/2" x 61" strips and
- (2) 6-1/2" x 58-1/2" strips for outer border

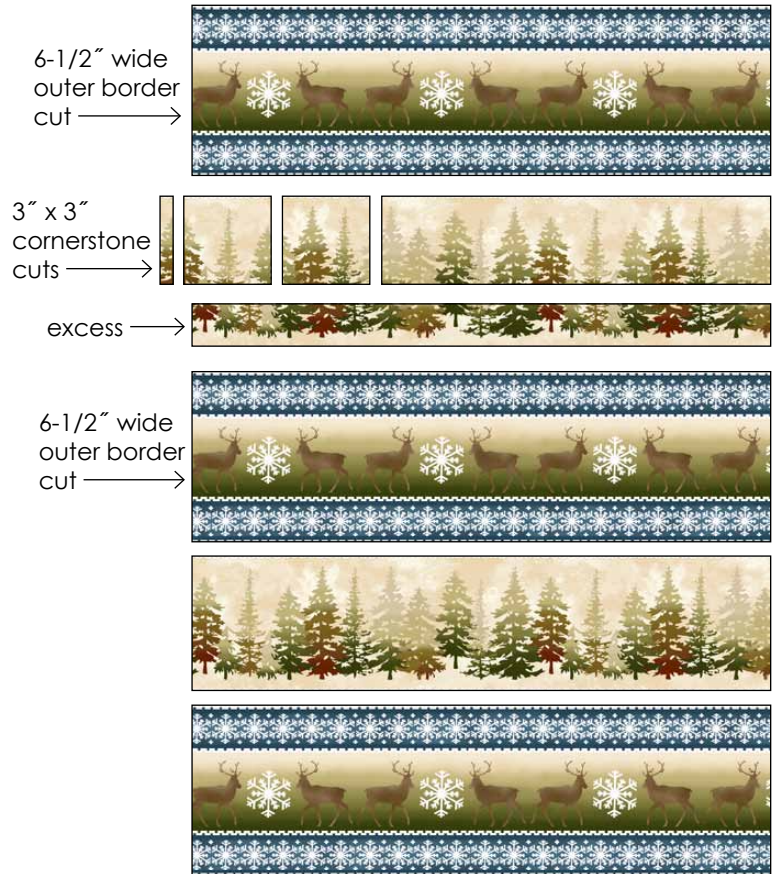
Backing

Cut (2) 68" x 42" pieces.

Sew the pieces together on the short
edges and trim to make (1) 68" x 84"
backing piece.

Cutting Guide for Fabric E/F

(MASF3002-B Deer Stripe)

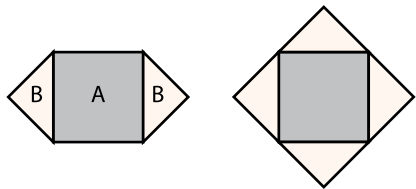


This pattern was designed using an accurate 1/4" seam. Before beginning, please precisely cut (2) 1-1/2" x 5" pieces of fabric. Stitch them together along the 5" edge. Press and measure across them at the midpoint on their width. They should be EXACTLY 2-1/2" across. If not, adjust your stitching and try again until correct.

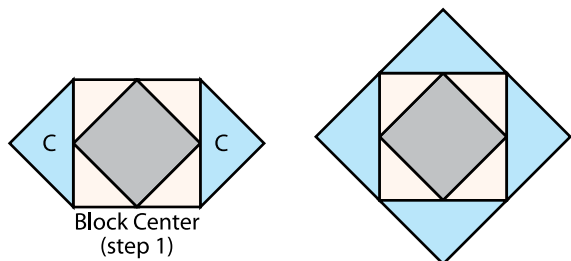
*see cutting guide for fabric E/F

Construction

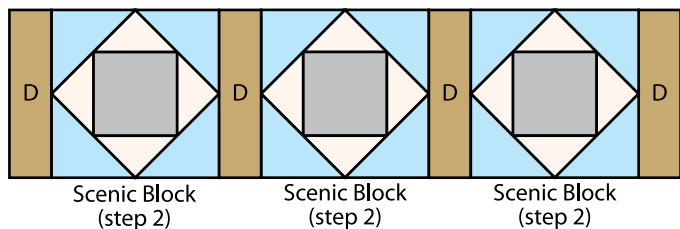
1. **Block Center:** Sew one *Fabric B* small triangle to each side of one $6\frac{1}{2}$ " *Fabric A* square. Press out towards the *Fabric B* triangles. Sew one *Fabric B* small triangle to the top and bottom of the $6\frac{1}{2}$ " *Fabric A* square. Press out towards the *Fabric B* triangles. Make 12.



2. **Snowflake Block:** Sew one *Fabric C* large triangle to each side of one Block Center. Press out towards the *Fabric C* triangles. Sew one *Fabric C* large triangle to the top and bottom of the block center. Press out towards the *Fabric C* triangles to make one $12\frac{1}{2}$ " block. Make 12.



3. **Block Row:** Using the diagram as a guide, sew together three Snowflake Blocks and four 3 " x $12\frac{1}{2}$ " *Fabric D* strips. Make 4.



4. **Sashing Row:** Sew together four 3 " *Fabric E* squares and three 3 " x $12\frac{1}{2}$ " *Fabric D* strips, alternating them to make one sashing row. Make 5.

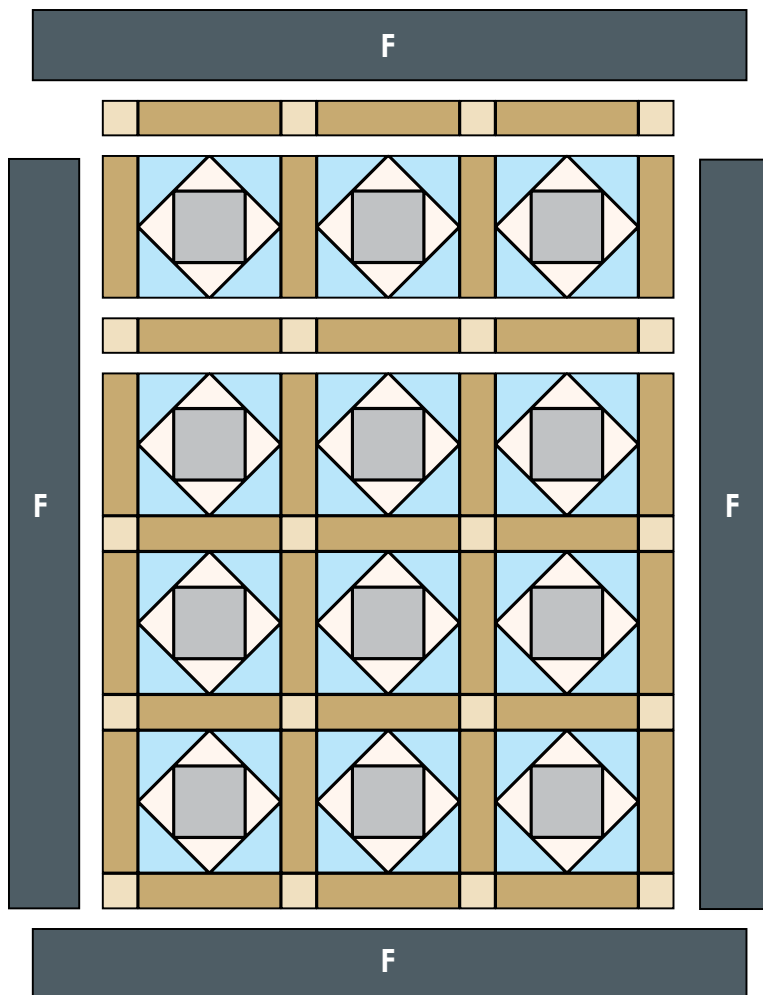


Use the Quilt Top Diagram as a guide to complete the following steps:

5. Sew together the five sashing rows and four block rows, alternating them to make the $46\frac{1}{2}$ " x 61 " quilt top.

6. Sew one $6\frac{1}{2}$ " x 61 " *Fabric F* strip to each side of the quilt top. Sew one $6\frac{1}{2}$ " x $58\frac{1}{2}$ " *Fabric F* strip to the top and bottom of the quilt top.
7. Press your quilt top and layer it. Quilt as desired.
8. Sew the seven $2\frac{1}{2}$ " x 42 " *Fabric E* strips together end-to-end with a 45° seams to make the binding. Fold this long strip in half lengthwise with wrong sides together and press.
9. Bind.

Quilt Top Diagram



Fabric

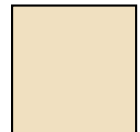
Fabric A	MASF3004-Z	Snowflake 6" Squares.....	2/3 yard (12 squares)
Fabric B.....	MASF3006-E	Deer with Stars Allover.....	3/4 yard
Fabric C.....	MASF3005-B.....	Deer in Trees Allover	1-1/8 yards
Fabric D opt. #1	MASF1841-T	Herringbone	} 1-1/4 yards
OR Fabric D opt. #2	MASF1813-E	Tweed	
Fabric E/F	MASF3002-B	Deer Stripe	2-1/2 yards
Binding.....	MASF3006-B.....	Deer with Stars Allover.....	1 yard
Backing	Your Choice.....		4 yards



Fabric A
MASF3004-Z



Fabric E
MASF3002-B



Use tree stripe.
See cutting guide

↑
Same fabric - Deer Stripe in Blue



Fabric F
MASF3002-B



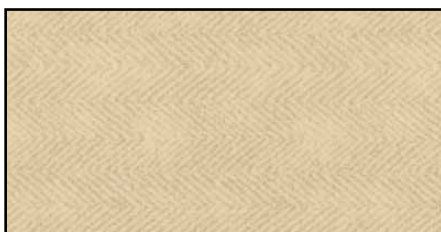
Use deer stripe.
See cutting guide



Fabric B
MASF3006-E



Fabric C
MASF3005-B



Fabric D option #1
MASF1841-T



Binding
MASF3006-B



Fabric D option #2
MASF1813-E



Size shown is approx. 40% of actual size