

# WAREHOUSE FAN TABLE RUNNER

Designed by Stephanie Prescott



A



B

Approx. Finished Size 14" x 35"

## BOHO VIBE BATIKS

Fresh Water  
Designs

EE **SCHENCK** CO  
...sew CREATIVE!

**PORTLAND**  
800.433.0722  
503.284.4124

6000 N. Cutter Cir.  
Portland, OR 97217  
fax 503.288.4475



**LOS ANGELES**  
800.237.6620  
323.584.8820

4561 Maywood Ave  
Vernon, CA 90058  
fax 323.584.8847

[www.eeschenck.com](http://www.eeschenck.com)

# WAREHOUSE FAN TABLE RUNNER

A Charm Pack Pattern

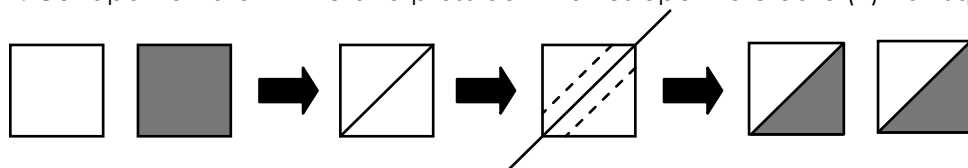
Table Runner designed by Stephanie Prescott for Fresh Water Designs  
Boho Vibe Batiks fabric collection by Stephanie Prescott and Fresh Water Designs

## Fabric Requirements:

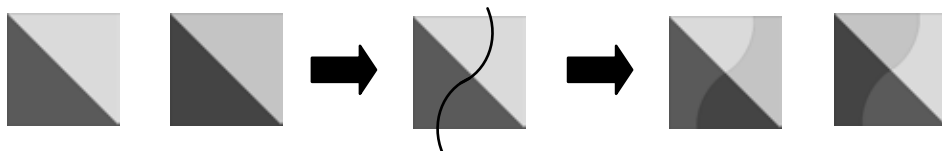
- (1) stunning charm pack from the Boho Vibe Batiks
- 1/2 yard—backing
- 1/4 yard—binding

## Constructing the Blocks:

1. Divide the charm squares equally into two piles—
  - 1—medium to dark
  - 1—light to medium
2. Take one square from each pile and put them right sides together. Draw a diagonal line from corner to corner on top fabric.
3. Sew 1/4 inch seam on either side of drawn line.
4. Cut apart on drawn line and press both halves open to create (2) half square triangle units.

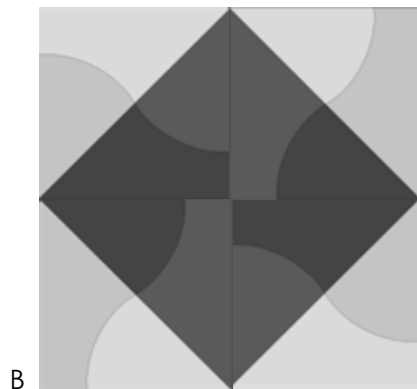
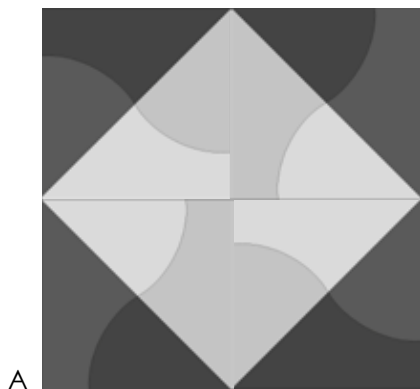


5. Repeat this process with the remaining squares; each time using one light and one dark.
6. Take (2) different sewn half square triangle units.
7. Lay the two units on top of each other—right sides up and with the diagonal seam aligned. Pin the two blocks together with one pin on the right side and one on the left. (This will prevent slipping when cutting in step #9.)
8. Measure and mark a point 1 1/4 inches from the bottom left corner and 1 1/4 inches from the top right corner.
9. Cut a gentle curve up from the bottom mark—through the center of the half square triangle—and gently curving to the top mark. (Think very gentle backwards "S" )
10. Take out the pins holding the blocks together. Swap the cut pieces. Put right sides together and match up the center points and pin. It is easiest to then sew from the center out one direction and then from the center out toward the other side using a scant 1/4 inch seam allowance. YOUR EDGES WILL NOT MATCH since we did not take the seam allowance into account. Repeat with the other 2 halves.



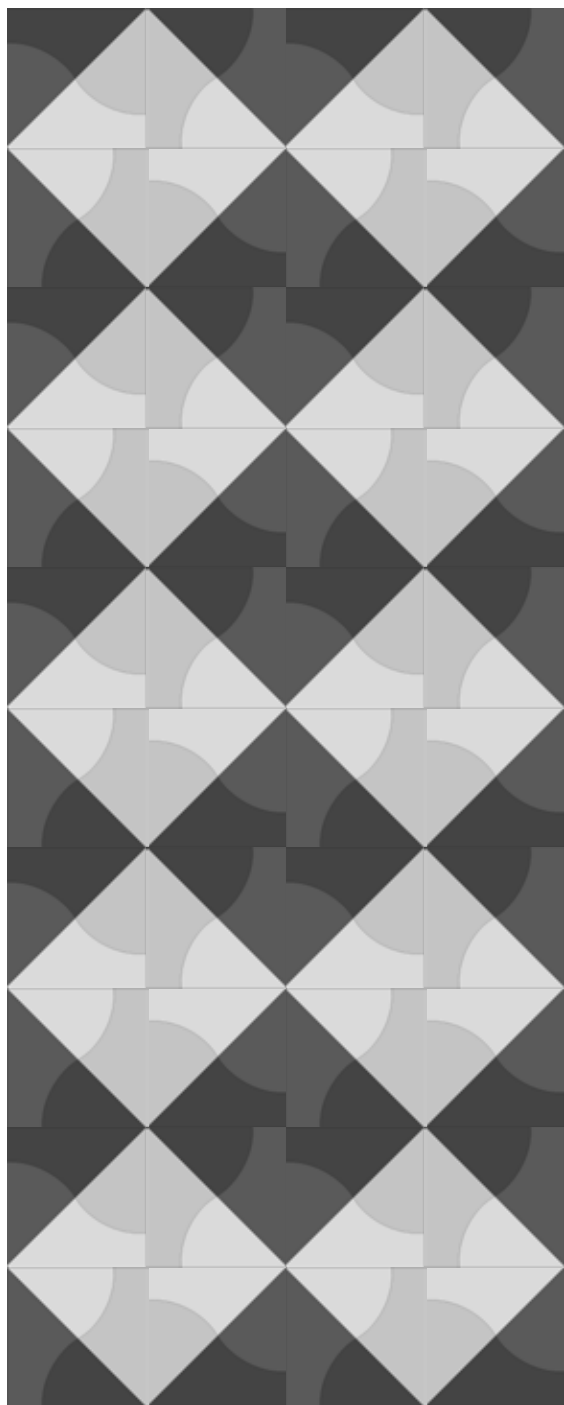
11. Square up sewn blocks to 4 inches.
12. Repeat with remaining half square triangle unit.

13. Put blocks into a 4-patch and decide if you prefer lights in the center or darks. (See below)

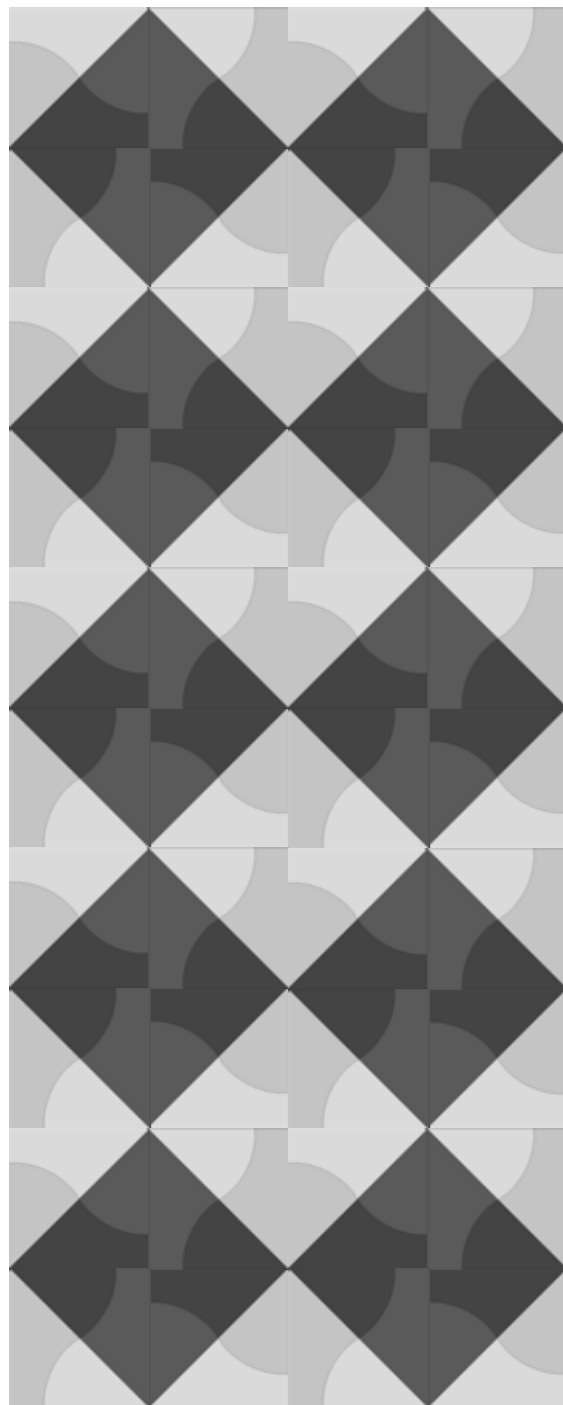


14. Arrange completed blocks in a 4 x 10 layout. (See below.)

Version A



Version B



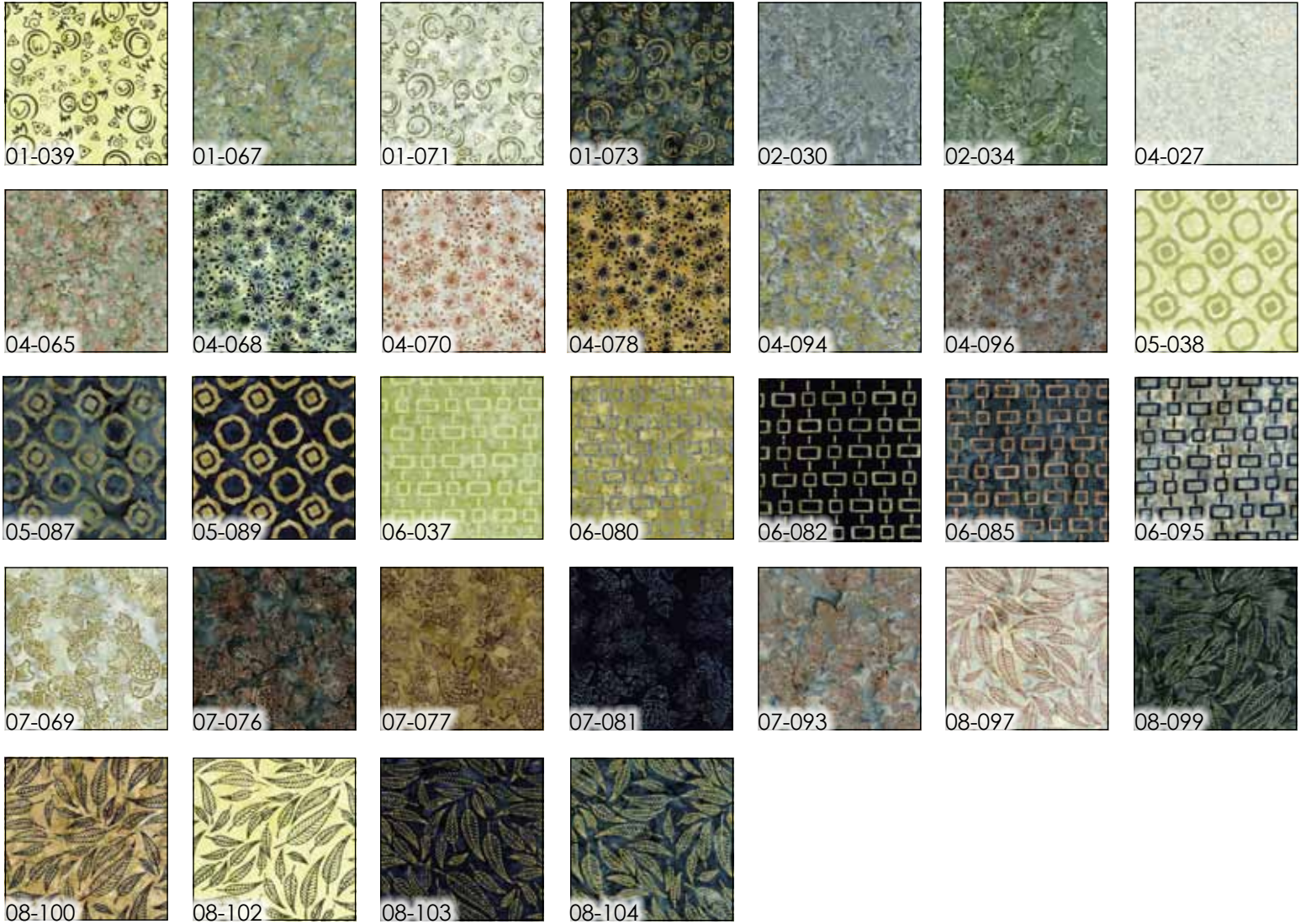


# WAREHOUSE FAN TABLE RUNNER

## Supplies Needed:

(1) charm pack from the Boho Vibe Batiks | 1/2 yard—backing (your choice) | 1/4 yard—binding (your choice)

### Boho Vibe Batiks—FWDBOVx



### Boho Vibe Solids—GALJABx

