



WORKIN' THE WEST

Art by Tom Browning for Maywood Studio



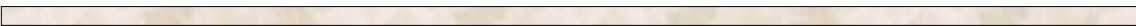
32½" x 46½" Quilt by Debbie Beaves



www.maywoodstudio.com

Cutting

First cut the panel into rows through the cream background. The seam allowances are included in the Western scenes without taking anything away from the main elements.



Example: 6½" square

Next, trim each scene so it measures as indicated in the diagram below. Fun fact—the titles of each original painting by Tom Browning are also listed.

NOTE: When you piece the scenes together be aware, you can follow the quilt exactly as shown on the pattern cover, BUT... there is room to play. Same-size cuts can be switched with each other if you want to customize your quilt.

<p>Ⓐ</p> <p>6½" x 8½"</p> <p><i>The Rough String</i></p>	<p>Ⓑ</p> <p>6½" x 8½"</p> <p><i>Cinchin' Up</i></p>	<p>Ⓒ</p> <p>6½" x 12½"</p> <p><i>Workin' the West</i></p>	<p>Ⓓ</p> <p>6½" x 6½"</p> <p><i>In the Circle</i></p>
<p>Ⓔ</p> <p>6½" x 12½"</p> <p><i>Dusty Veil</i></p>	<p>Ⓕ</p> <p>6½" x 16½"</p> <p><i>Canyon Strays</i></p>	<p>Ⓖ</p> <p>6½" x 8½"</p> <p><i>Over the Hill</i></p>	
<p>Ⓗ</p> <p>6½" x 6½"</p> <p><i>Low Visibility</i></p>	<p>Ⓖ</p> <p>6½" x 16½"</p> <p><i>Over the Ridge</i></p>	<p>Ⓙ</p> <p>6½" x 6½"</p> <p><i>Strays</i></p>	<p>Ⓚ</p> <p>6½" x 6½"</p> <p><i>Herd Quitters</i></p>

The following cuts are interchangeable with each other:

- A, B & G are interchangeable (6½" x 8½")
- C & E are interchangeable (6½" x 12½")
- D, H, J & K are interchangeable (6½" x 6½")
- F & I are interchangeable (6½" x 16½")

Cutting for Sashing & Border Assembly

Cut each brown strip (4) into one 24½" and two 6½" lengths.

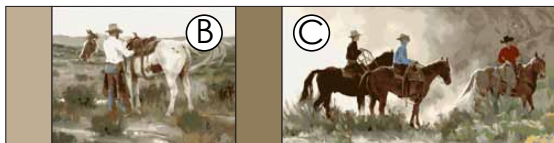


Sew the remaining strips in the exact rotation shown below. Press toward the darker fabric. Cut into ten 2½" wide units.



Cut 10
2½" units

Quilt Assembly & Binding



Assemble as shown.

For sashing (brown strips) and inner border (blue strips) placement, refer to the picture on the pattern cover.

Press toward brown and blue strips after each addition.

Bind using red strips.



Fabric

(1) Workin' the West Panel

MAS8100-E (3 consecutive rows of scenes, approx. $\frac{2}{3}$ yd)



**WORKIN'
THE WEST**

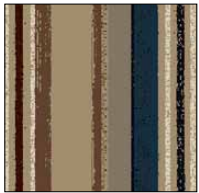
fabric collection
by Tom Browning
for Maywood Studio



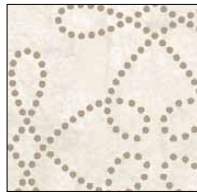
(1) Workin' the West Strip Set

ST/MASWOW (There will be strips left over. These can be incorporated into the backing or used in other projects.)

Pieced Border



MAS1796-BA



MAS8101-W



MAS1796-BE



MAS8102-W



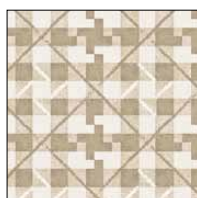
MAS1796-GE



MAS8106-E

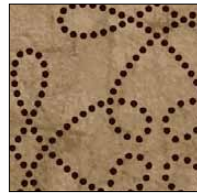


MAS1796-RJ

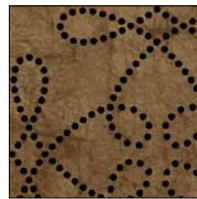


MAS8107-E

Sashing



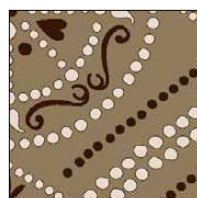
MAS8101-A



MAS8101-A2

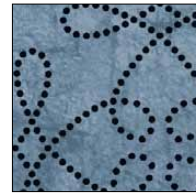


MAS8102-A

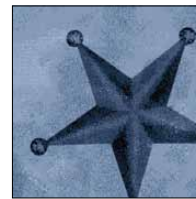


MAS8106-A

Inner Border



MAS8101-B



MAS8102-B

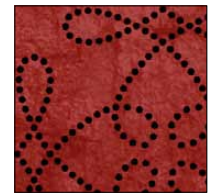


MAS8106-B

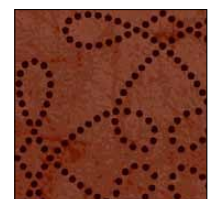


MAS8107-B

Binding



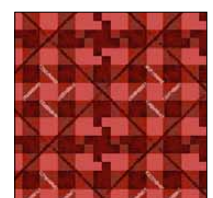
MAS8101-R



MAS8101-R2



MAS8106-R



MAS8107-R