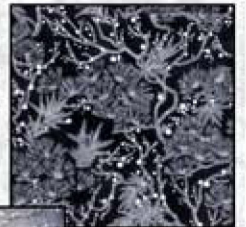


SNOW FESTIVAL

Quilt design by Linda Fitch featuring fabrics from the "Snow Festival" collection by Hoffman California Fabrics



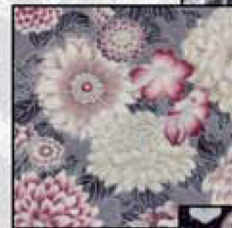
K7198
4S-Black/Silver



K7197
147S-Storm/Silver



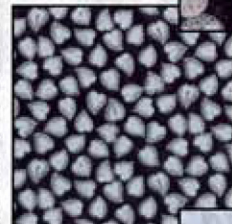
K7200
147S-Storm/Silver



K7199
11S-Mauve/Silver



K7202
147S-Storm/Silver



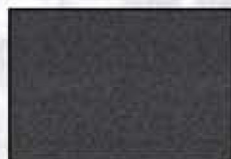
K7201
4S-Black/Silver



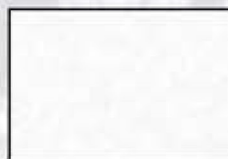
K7178
176S-Ice/Silver

Quilt Size 43 1/2" x 53 1/2"

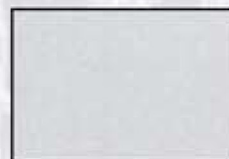
Free pattern available from
www.hoffmanfabrics.com



G8555 213S-Onyx/Silver



G8555 3S-White/Silver



K7180 176S-Ice/Silver

HOFFMAN FABRICS
CALIFORNIA-INTERNATIONAL

“Snow Festival” featuring fabrics by Hoffman California Fabrics

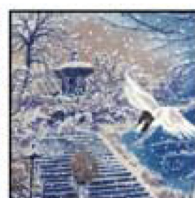
Yardage Chart

Storm/Silver Colorway	Ice Blue/Silver Colorway	Evergreen/Gold Colorway	
K7197 Storm/Silver #147S	K7197 Ice Blue/Silver #190S	K7197 Evergreen/Gold #166G	7/8 yard
K7198 Black/Silver #4S	K7198 Blue/Silver #7S	K7198 Jade/Gold #29G	7/8 yard
K7199 Mauve/Silver #11S	K7199 Dark Orchid/Silver #373S	K7199 Jade/Gold #29G	3/8 yard
K7200 Storm/Silver #147S	K7200 Dark Orchid/Silver #373S	K7200 Evergreen/Gold #166G	3/8 yard
K7201 Black/Silver #4S*	K7201 Navy/Silver #19S*	K7201 Evergreen/Gold #166G*	7/8 yard
K7202 Storm/Silver #147S	K7202 Ice Blue/Silver #190S	K7202 Evergreen/Gold #166G	3/8 yard
K7178 Ice/Silver #176S	K7178 Ice/Silver #176S	K7178 Cream/Gold #33G	3/8 yard
K7180 Ice/Silver #176S	K7180 Ice/Silver #176S	K7159 Cream/Gold #33G	1/8 yard
G8555 White/Silver #3S	G8555 White/Silver #3S	G8555 White/Gold #3G	3/4 yard
G8555 Onyx/Silver #213S	G8555 Navy/Silver #19S	G8555 Hunter/Gold #60G	3/8 yard

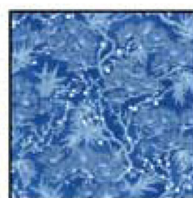
*Yardage includes binding.

BACKING: Coordinate of your choice. 3 5/8 yards

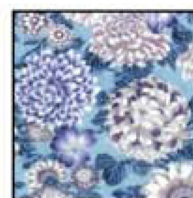
Ice Blue/Silver Colorway



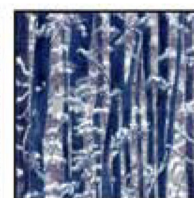
K7197
190S-Ice Blue/Silver



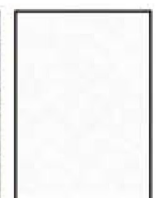
K7198
7S-Blue/Silver



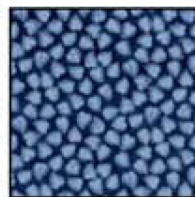
K7199 373S-Dark
Orchid/Silver



K7200 373S-Dark
Orchid/Silver



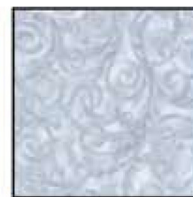
G8555
3S-White/Silver



K7201
19S-Navy/Silver



K7202
190S-Ice Blue/Silver



K7178
176S-Ice/Silver

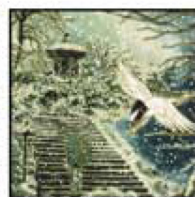


K7180
176S-Ice/Silver



G8555
19S-Navy/Silver

Evergreen/Gold Colorway



K7197 166G-
Evergreen/Gold



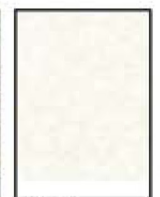
K7198
29G-Jade/Gold



K7199
29G-Jade/Gold



K7200 166G-
Evergreen/Gold



G8555
3G-White/Gold



K7201 166G-
Evergreen/Gold



K7202 166G-
Evergreen/Gold



K7178
33G-Cream/Gold



K7159
33G-Cream/Gold



G8555 60G-
Hunter/Gold

View swatches and download quilt patterns at www.hoffmanfabrics.com

Snow Festival

Designed by Linda Fitch
Instructions by Linda Ambrosini

Finished Size 44 x 53 inches

For the Confident intermediate skilled quilter

Cutting Instructions:

NOTE: All dimensions listed on the quilt diagram are CUT sizes not finished!!!

Using the color image for fabric placement and the line diagram for size requirements cut all the solid fabric blocks, sashing and borders. Take care with the large pictorial fabric, K7197...cut it with pleasing scenes for your quilt.

NOTE: When printing the template pages, set to print wide page margins!

Constructing the novelty blocks:

Included in this pattern are instructions to either traditional or paper piece the novelty blocks. Use the technique which you feel the most comfortable. The same goes for the appliqué!

For this quilt construct 3 pagoda blocks, 2 snowflake blocks and 3 tree blocks. Note there are 2 tree blocks with the large tree on the left and 1 with the large tree on the right.

Pagoda blocks: Making these in your favorite method, make sure the background tree fabric E, K7200 has all the tree trunks going vertically. Make 3. At this point, the block should measure 8 ½ x 10 ½".

Snowflake blocks: The wedges are alternating fabrics K7199 and K7180 Ice Silver or K7159 Cream Gold, if doing the gold metallic version. Either paper or traditional piece. Cut a 7" square of fabric F, K7198. This square is the background to appliqué your snowflake onto, using your favorite method. Make 2.

Tree blocks: Make 3 blocks total, 2 with a left facing large tree and 1 with a right facing large tree. If you are paper piecing these blocks, remember your patterns are a mirror image of your block, so make the number of copies

accordingly. Refer to the color image for fabric placement as all three blocks are different. At this point the block should measure 8 ½" x 8 ½".

Constructing the quilt:

At this point all the blocks and sashing should be cut. Organize their placement per the color picture. Sew into groups of blocks. You will run into an issue that all the groups do not align with full seams. This is because you will need to partially sew a seam around the tree trunk fabric square, fabric E, K7200, and then finish the seam after the last group is joined. This issue is by design, and gives this quilt a unique flow by reducing an expected seam. It is just nice to be aware of this issue when figuring out the puzzle, so you don't drive yourself crazy!

Add the borders, quilt and bind.

Note: This quilt would be beautiful embellished. Your choice, let your creativity take over!