

Neutral Territory

Fabric Collection by **Donna Becher**

FREE PATTERN

Ask for our fabrics
in your local
independent
quilt shop!



Abstract Patchwork quilt by Heidi Pridemore • Size: 48" x 60"



pbtex.com

Abstract Patchwork

Quilt by Heidi Pridemore using the *Neutral Territory* fabric collection by Donna Becher for P&B Textiles

Quilt Size: 48" x 60" • Block Size: 12" square

Yardage

Fabric A	NTER 631 Z (Large Abstract)	3/4 yard
Fabric B	NTER 632 M (Abstract Squares)	1/3 yard
Fabric C	NTER 634 Z (Abstract Stripe)	3/8 yard
Fabric D	NTER 633 B (Blue Sketch)	3/4 yard
Fabric E	NTER 633 Z (Brown Sketch)	1/2 yard
Fabric F	NTER 635 K (Black Dots)	3/4 yard
Fabric G	NTER 635 Z (Brown Dots)	3/8 yard
Fabric H	NTER 636 Z (Gold Grid)	1/2 yard
Fabric I	NTER 636 T (Teal Grid)	3/8 yard
BACKING	any NTER fabric	3 1/4 yards

Cutting

From fabric A (Large Abstract), cut:

- (2) 10 1/2" x 42" strips; cut into (8) 10 1/2" squares

From fabric B (Abstract Squares), cut:

- (1) 7 1/2" x 42" strip; cut into (3) 7 1/2" x 8 1/2" strips

From fabric C (Abstract Stripe), cut:

- (1) 5 1/2" x 42" strip; cut into (5) 5 1/2" squares
- (1) 4 1/2" x 42" strip; cut into (3) 4 1/2" x 9 1/2" strips

From fabric D (Blue Sketch), cut:

- (1) 8 1/2" x 42" strip; cut into (4) 8 1/2" squares
- (2) 5 1/2" x 42" strips; cut into (5) 5 1/2" x 7 1/2" strips and (3) 5 1/2" squares

From fabric E (Brown Sketch), cut:

- (1) 4 1/2" x 42" strip; cut into (4) 4 1/2" x 8 1/2" strips
- (1) 7 1/2" x 42" strip; cut into (5) 5 1/2" x 7 1/2" strips

From fabric F (Black Dots), cut:

- (1) 5 1/2" x 42" strip; cut into (5) 2 1/2" x 5 1/2" strips and (3) 3 1/2" x 4 1/2" strips
- (6) 2 1/2" x 42" binding strips

From fabric G (Brown Dots), cut:

- (1) 10 1/2" x 42" strip; cut into (16) 2 1/2" x 10 1/2" strips

From fabric H (Gold Grid), cut:

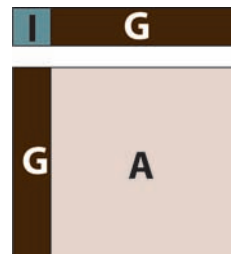
- (1) 4 1/2" x 42" strip; cut into (4) 4 1/2" x 8 1/2" strips
- (1) 7 1/2" x 42" strip; cut into (5) 2 1/2" x 7 1/2" strips and (3) 3 1/2" x 5 1/2" strips

From fabric I (Teal Grid), cut:

- (1) 5 1/2" x 42" strip; cut into (5) 5 1/2" squares
- (1) 4 1/2" x 42" strip; cut into (4) 4 1/2" squares and (8) 2 1/2" squares

Block Assembly

1. Sew a fabric G strip to the left side of a fabric A square. Sew a fabric I 2 1/2" square to the one end of a fabric G strip. Sew the I/G strip to the top of the G/A unit to complete block 1. The block should measure 12 1/2" square. Make a total of eight blocks.



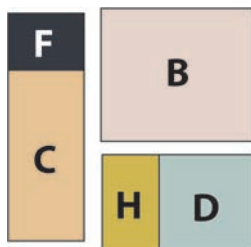
2. Sew a fabric H 4 1/2" x 8 1/2" strip to the left side of a fabric D 8 1/2" square. Sew a fabric I 4 1/2" square to the one end of a fabric E 4 1/2" x 8 1/2" strip. Sew the I/E strip to the top of the H/D unit to complete block 2. The block should measure 12 1/2" square. Make a total of four blocks.



3. Sew a fabric H $2\frac{1}{2}$ " x $7\frac{1}{2}$ " strip to the top of a fabric D $5\frac{1}{2}$ " x $7\frac{1}{2}$ " strip. Sew a fabric E $5\frac{1}{2}$ " x $7\frac{1}{2}$ " strip to the left side of the H/D strip. Join one fabric C $5\frac{1}{2}$ " square, one fabric I $5\frac{1}{2}$ " square, and one fabric F $2\frac{1}{2}$ " x $5\frac{1}{2}$ " strip as shown to make a C/I/F strip. Sew this strip to the top of the E/H/D unit to complete block 3. The block should measure $12\frac{1}{2}$ " square. Make a total of five blocks.



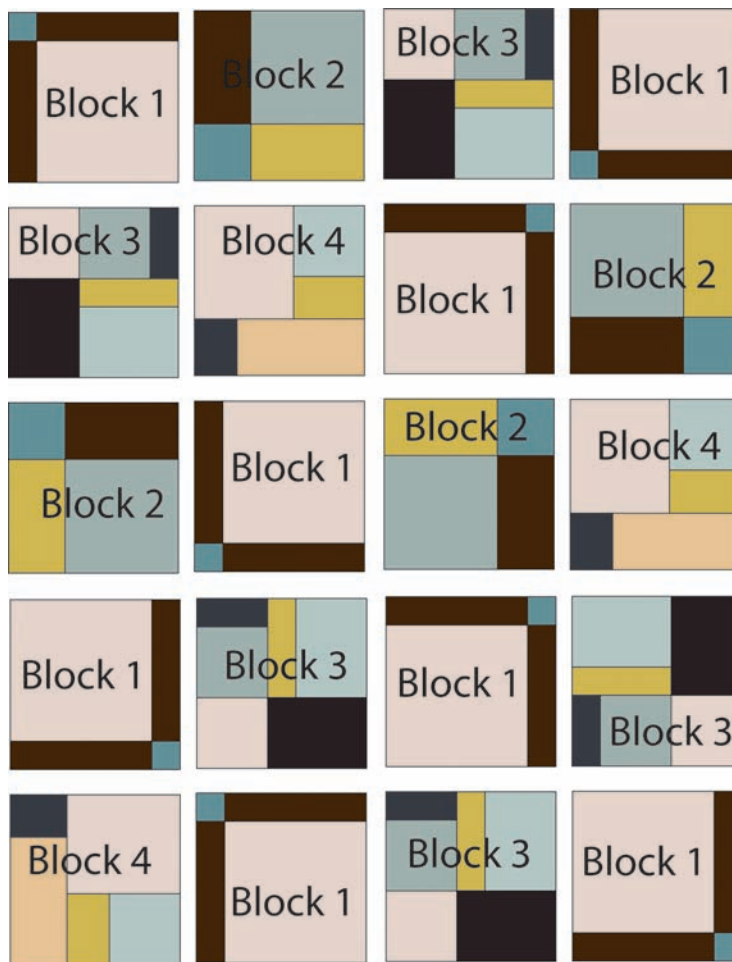
4. Sew a fabric H $3\frac{1}{2}$ " x $5\frac{1}{2}$ " strip to the left side of a fabric D $5\frac{1}{2}$ " square. Sew a fabric B strip to the top of the H/D unit. Sew a fabric F $3\frac{1}{2}$ " x $4\frac{1}{2}$ " strip to one end of a fabric C $4\frac{1}{2}$ " x $9\frac{1}{2}$ " strip. Sew the F/C strip to the B/H/D unit to complete block 4. The block should measure $12\frac{1}{2}$ " square. Make a total of three blocks.



Quilt Top Assembly

5. Referring to the quilt assembly diagram, lay out the blocks in five rows of four blocks each, alternating the blocks as shown. Join the blocks into rows and then join the rows to complete the quilt top.

6. Layer the quilt top with batting and backing; baste. Quilt as desired. Using the fabric F $2\frac{1}{2}$ "-wide strips, bind the edges to finish.



Quilt Assembly Diagram

Neutral Territory

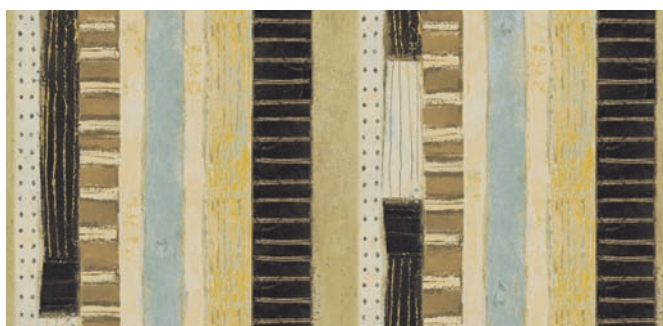
Fabric Collection by Donna Becher



NTER 631 Z - SHOWN AT 30% SCALE



NTER 632 M



NTER 634 Z



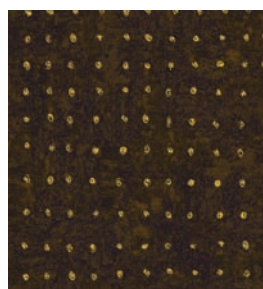
NTER 633 B



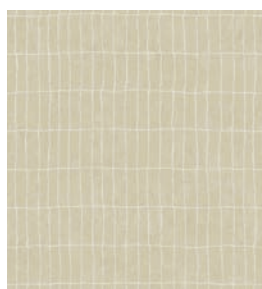
NTER 633 Z



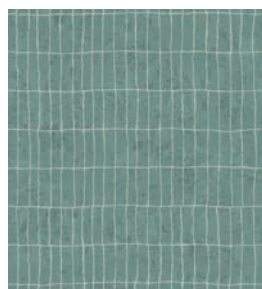
NTER 635 K



NTER 635 Z



NTER 636 GR



NTER 636 T



NTER 636 Z

P&B Textiles ♦ www.pbtex.com ♦ 800-351-9087

45-47 Washington St, Pawtucket, RI 02860 ♦ 237 W. 35th St, 11th floor, New York, NY 10001



100% cotton ♦ Cold wash & dry ♦ 43"/44" ♦ Colors may vary due to printing process ♦ 2/13

All fabrics shown at 40% scale except 631 Z which is 30%.