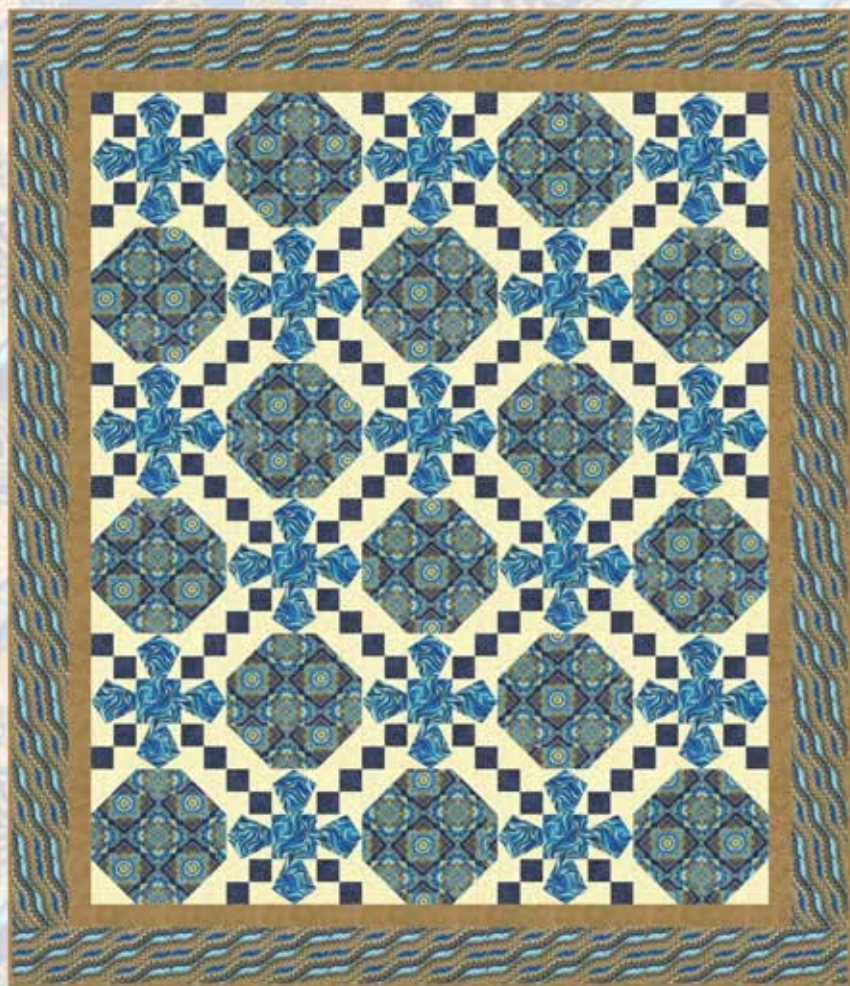


ANCIENT TILES OF ISTANBUL

Quilt Design by Denise M. Russart featuring fabrics from the "Istanbul" Collection by Emma Schonenberg for Hoffman California Fabrics



K3312 230G
Sapphire Gold



K3313 230G
Sapphire Gold



K3314 230G
Sapphire Gold



J9216 18G
Royal Gold



J9216 A64G
Antique Tan Gold

To see more quilts designed by Denise go to www.justquiltin.wordpress.com

Free pattern available from
www.HoffmanFabrics.com

Quilt Size 75" x 87"

Style	
K3312 230G-Sapphire Gold	1 $\frac{7}{8}$ yards
K3313 230G-Sapphire Gold	1 $\frac{1}{2}$ yards
K3314 230G-Sapphire Gold	1 $\frac{1}{3}$ yards
J9216 18G-Royal Gold	$\frac{5}{8}$ yard
J9216 A64G-Antique Tan Gold*	1 $\frac{1}{4}$ yards
G8555 22G-Ivory Gold	2 $\frac{7}{8}$ yards

*Yardage includes binding.

BACKING: Coordinate of your choice. 5 $\frac{1}{3}$ yards (1 kit); 64 yards (12 kits)



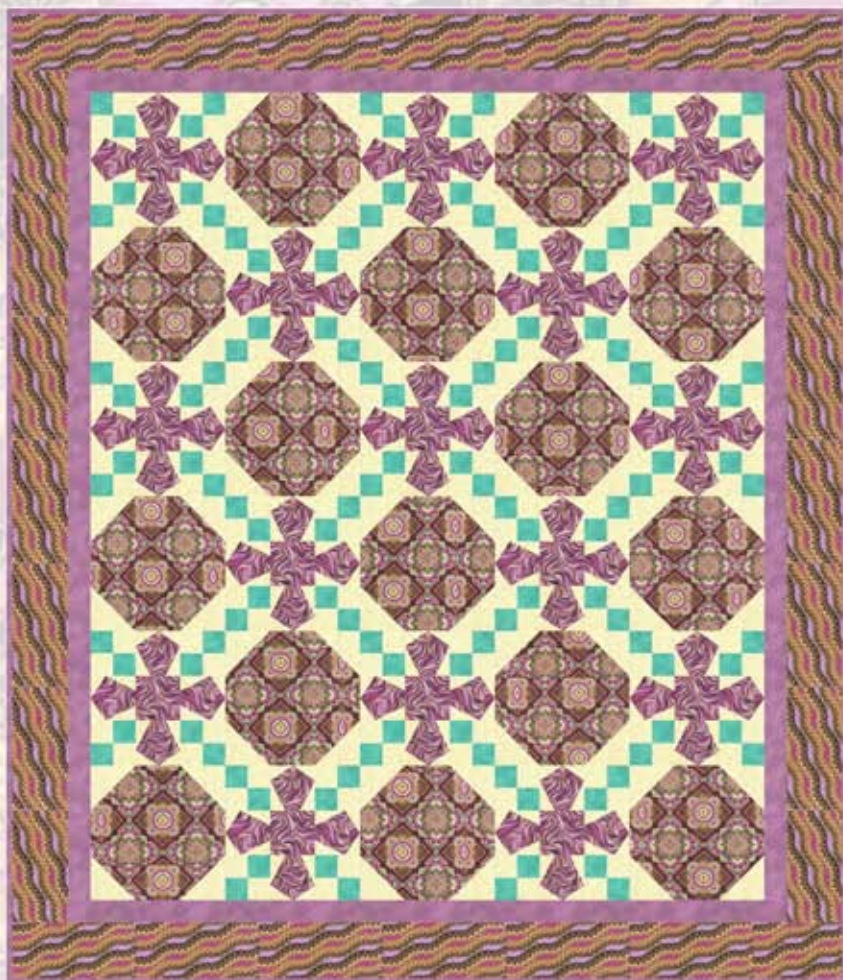
G8555 22G
Ivory Gold

HOFFMAN FABRICS

CALIFORNIA-INTERNATIONAL

ANCIENT TILES OF ISTANBUL

Quilt Design by Denise M. Russart featuring fabrics from the "Istanbul" Collection by Emma Schonenberg for Hoffman California Fabrics



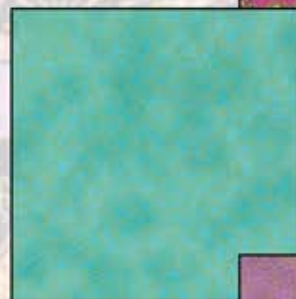
K3312 23G
Fuchsia Gold



K3313 23G
Fuchsia Gold



K3314 23G
Fuchsia Gold



J9216 41G
Aqua Gold



J9216 223G
Orchid Gold

To see more quilts designed by Denise go to www.justquiltin.wordpress.com

Free pattern available from
www.HoffmanFabrics.com

Quilt Size 75" x 87"

Style	
K3312 23G-Fuchsia Gold	1 $\frac{7}{8}$ yards
K3313 23G-Fuchsia Gold	1 $\frac{1}{2}$ yards
K3314 23G-Fuchsia Gold	1 $\frac{1}{3}$ yards
J9216 41G-Aqua Gold	$\frac{3}{8}$ yard
J9216 223G-Orchid Gold*	1 $\frac{1}{4}$ yards
G8555 22G-Ivory Gold	2 $\frac{7}{8}$ yards

*Yardage includes binding.

BACKING: Coordinate of your choice. 5 $\frac{1}{3}$ yards (1 kit); 64 yards (12 kits)

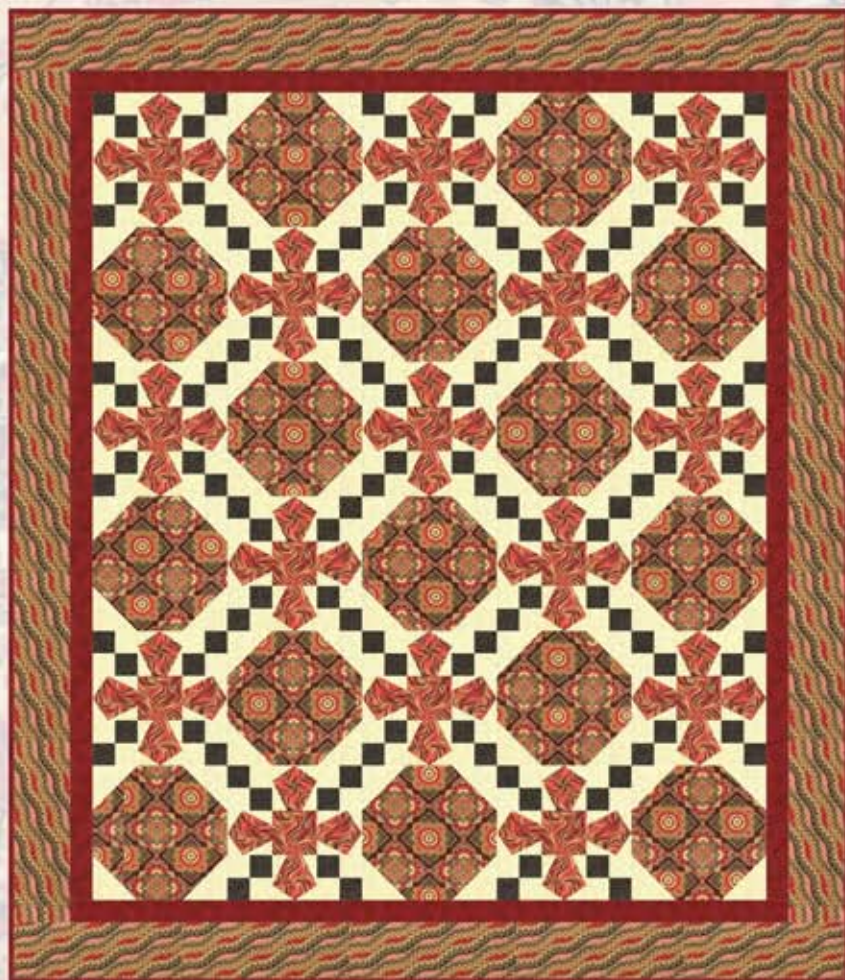


G8555 22G
Ivory Gold

HOFFMAN FABRICS
CALIFORNIA-INTERNATIONAL

ANCIENT TILES OF ISTANBUL

Quilt Design by Denise M. Russart featuring fabrics from the "Istanbul" Collection by Emma Schonenberg for Hoffman California Fabrics



K3312 231G
Garnet Gold



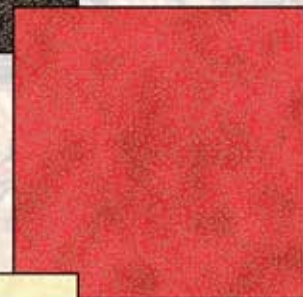
K3313 231G
Garnet Gold



K3314 231G
Garnet Gold



J9216 4G
Black Gold



J9216 231G
Garnet Gold



G8555 22G
Ivory Gold

To see more quilts designed by Denise go to www.justquiltin.wordpress.com

Free pattern available from
www.HoffmanFabrics.com

Quilt Size 75" x 87"

Style	
K3312 231G-Garnet Gold	1 $\frac{7}{8}$ yards
K3313 231G-Garnet Gold	1 $\frac{1}{2}$ yards
K3314 231G-Garnet Gold	1 $\frac{1}{3}$ yards
J9216 4G-Black Gold	$\frac{3}{8}$ yard
J9216 231G-Garnet Gold*	1 $\frac{1}{4}$ yards
G8555 22G-Ivory Gold	2 $\frac{7}{8}$ yards

*Yardage includes binding.

BACKING: Coordinate of your choice. 5 $\frac{1}{3}$ yards (1 kit); 64 yards (12 kits)

HOFFMAN FABRICS
CALIFORNIA-INTERNATIONAL

ANCIENT TILES OF ISTANBUL

Quilt design by Denise M. Russart for the
Hoffman California Fabrics Istanbul Fabric Collection
Quilt Dimensions (including binding): 75" x 87"

	SAPPHIRE COLORWAY	GARNET COLORWAY	FUCHSIA COLORWAY
Fabric 1: 1+7/8 yds	K3312 230G-Sapphire Gold	K3312 231G-Garnet Gold	K3312 23G-Fuchsia Gold
Fabric 2: 1+1/2 yds	K3313 230G-Sapphire Gold	K3313 231G-Garnet Gold	K3313 23G-Fuchsia Gold
Fabric 3: 1+1/3 yds	K3314 230G-Sapphire Gold	K3314 231G-Garnet Gold	K3314 23G-Fuchsia Gold
Fabric 4: 5/8 yds	J9216-18G-Royal Gold	J9216 4G-Black Gold	J9216 41G-Aqua Gold
Fabric 5: 1+1/4 yds	J9216-A65G-Antique Gold Tan*	J9216-231G-Garnet Gold*	J9216 223-Orchid Gold*
Fabric 6: 2+7/8 yds	G8555 22G-Ivory Gold	G8555 22G-Ivory Gold	G8555 22G-Ivory Gold
BACKING FABRIC – coordinate of your choice : 5+1/3 yards		*this fabric includes binding yardage	

Read all instructions carefully before beginning. Use scant 1/4" seam allowance throughout.

This pattern contains some simple paper pieced sections and assumes you have basic paper piecing knowledge. If you need step-by-step paper piecing instructions, please refer to a quilt book, quilt magazine or one of the many tutorials available on the internet.

WOF = width of fabric from selvage to selvage

SC= subcut strips into smaller pieces indicated

CUTTING INSTRUCTIONS

Fabric 1: Cut (5) strips 12.5" x WOF
SC (15) 12.5" x 12.5" squares

Fabric 5: Cut (8) strips 2.5" x WOF [Border 1]
Cut (9) strips 2.5" x WOF [binding]

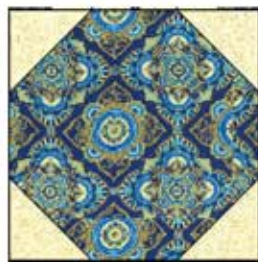
Fabric 2: Cut (2) strips 4.5" x WOF
SC (15) 4.5" x 4.5" squares
Cut (8) strips 5.0" x WOF
SC (60) 5.0" x 5.0" squares [A1]

Fabric 6: Cut (7) strips 4.5" x WOF
SC (60) 4.5" x 4.5" – draw diagonal line on back of each
Cut (8) strips 2.5" x WOF
Cut (6) strips 3.75" x WOF
SC (12) 2.0" x 3.75" rectangles [A4 & A5]
Cut (6) strips 4.5" x WOF
SC (120) 2.0" x 4.5" rectangles [A2 & A3]

Fabric 3: Cut (8) strips 5.5" x WOF

Fabric 4: Cut (8) strips 2.5" x WOF

PIECING INSTRUCTIONS -- Sapphire colorway is shown in images below



Using your 12.5" squares of Fabric 1 and 4.5" squares of Fabric 6 with the diagonal line on the back, stitch a square to each corner by placing square right sides together and stitching along drawn line to match angles show in image at left. Flip corner out, press, trim away excess layers.

Make 15 blocks measuring 12.5" square and set aside.

Using the Fabric 4 strips and Fabric 6 2.5" strips, make four strip sets by sewing one Fabric 4 strip to one Fabric 6 strip along from selvage to selvage. Press seam allowances towards darker fabric. Subcut these strip sets into (120) 2.5" x 4.5" pieces.



Then stitch two pairs into 4-patch blocks; press seams to one side. You will have (60) 4-patch blocks measuring 4.5" square. Set aside.

You will need a total of (60) paper piecing patterns. Each pattern piece is numbered A1 through A5. When you print the paper piecing pattern, it should measure 4.5" square along outside dotted lines. The dotted lines are the outside edge of the seam allowance (or the "unfinished" block size). The solid lines are the stitching lines.

Place the Fabric 2 [A1] piece right side up on the unprinted side of the paper piecing pattern, centering it. It should extend slightly beyond all seam allowance edges and will be trimmed to exact size after all stitching is completed. You may wish to pin this first piece in place to hold it. Then add remaining Fabric 6 pieces in numerical order: A2, followed by A3, A4, and A5. After adding each piece, trim excess seam allowance to scant quarter inch and flip piece out and finger press it. Once all pieces have been added, give a light press with the iron and then square up block trimming away excess fabric following DOTTED lines (outside edge of seam allowance). Make a total of 60 4.5" blocks.



Lay out 4-patches and paper pieced sections in three rows of three blocks as shown at left. Stitch blocks into rows pressing seam allowances away from paper pieced sections.



Join rows into block, pressing seam allowance away from center. Make 15 blocks measuring 12.5" square



Following cover quilt image, lay out 6 horizontal rows of 5 blocks each, stitching blocks into rows and joining rows to each other.

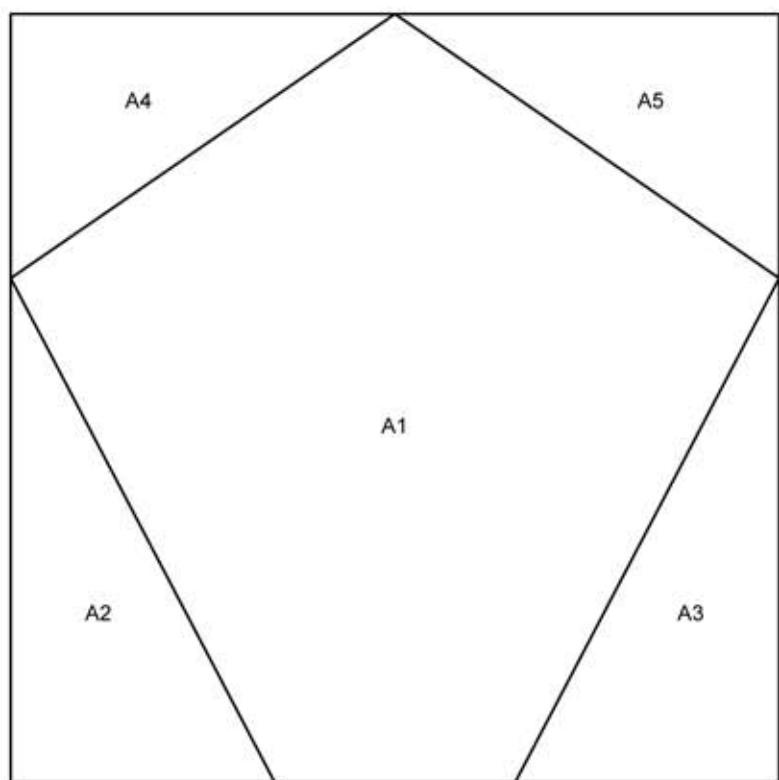
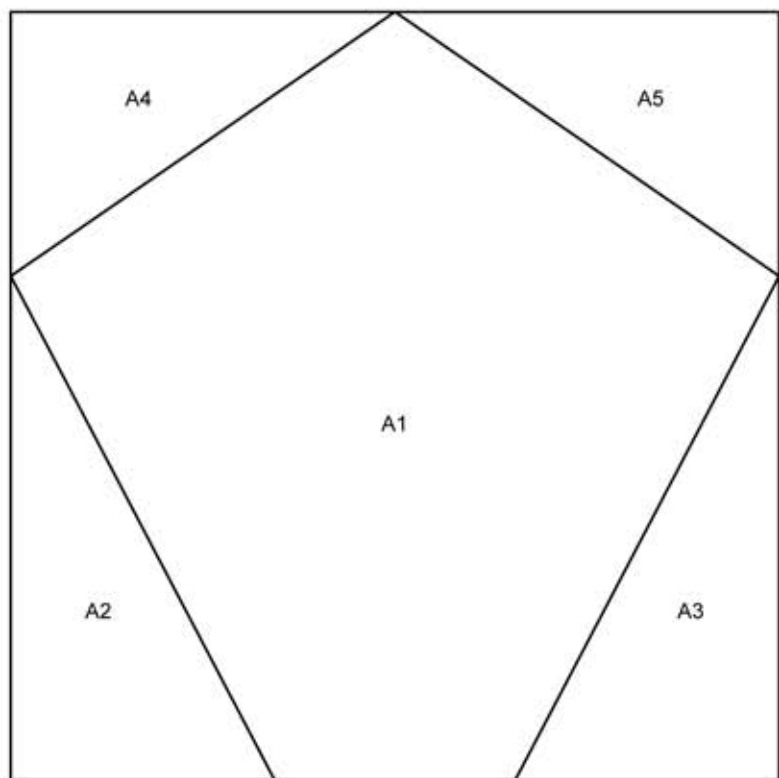
Border 1: Stitch Border 1 strips to each other using a 45 degree seam line into four border sections of two strips each. Cut two sections 72.5" long and stitch to left and right of quilt center, pressing seam allowances to outside edge of quilt. Cut remaining two sections 64.5" long and add to top and bottom.

Border 2: Stitch Fabric 3 strips to each other using a straight seam line into four border sections of two strips each. Cut two sections 76.5" long and add to left and right side of quilt, pressing seam allowances to outside edge of quilt. Cut remaining two sections 74.5" long and add to top and bottom.

Binding: Join all binding strips to each other on 45 degree angle, pressing the seam allowances open and then pressing binding in half lengthwise to make double fold binding.

Backing: Cut backing fabric into two pieces each 2-2/3 yard long and seam vertically.

Layer, quilt, bind and enjoy!



paperpiecing pattern measures 4.5" square along dotted (outside seam allowance) edge. If it does not mea
it, you need to adjust your printer settings, i.e. turn off "fit to page" "page scaling" "center and rotate" etc.