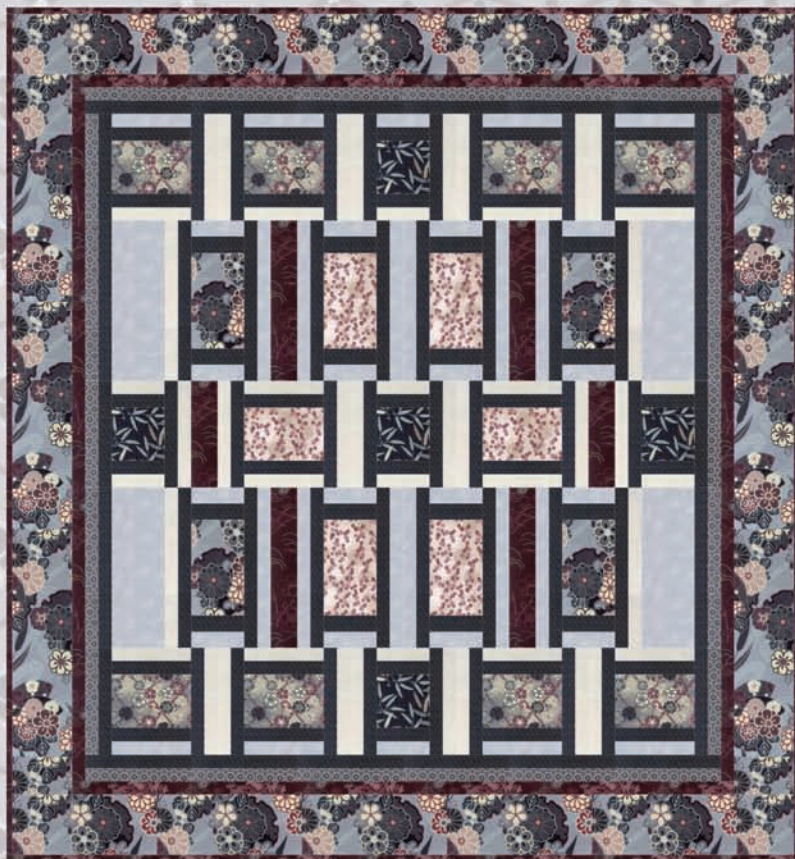


ASUKA

Quilt design by Toby Lischko featuring fabrics from the "Asuka" collection by Hoffman California Fabrics



Free pattern available from www.hoffmanfabrics.com

Quilt Size 59" x 63"

Style	
L7250 76S-Pewter/Silver	1 3/4 yards
L7251 50S-Wine/Silver*	1 yard
L7252 76S-Pewter/Silver	1/3 yard
L7253 76S-Pewter/Silver	1/4 yard
L7254 D63S-Dusty Rose/Silver	3/8 yard
L7255 76S-Pewter/Silver	5/8 yard
L7256 4S-Black/Silver	1 3/8 yards
L7256 134S-Parchment/Silver	5/8 yard
G8555 113S-Frost/Silver	3/4 yard



L7250 76S-Pewter/Silver



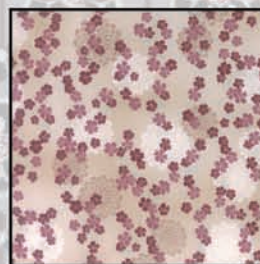
L7251 50S-Wine/Silver



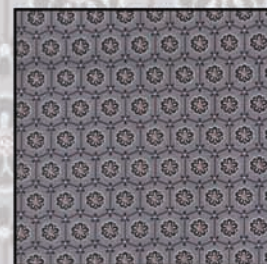
L7252 76S-Pewter/Silver



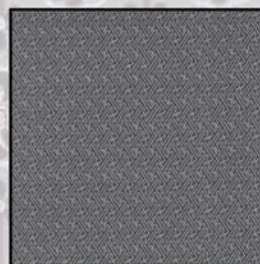
L7253 76S-Pewter/Silver



L7254 D63S-Dusty Rose/Silver



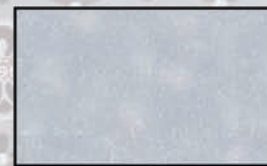
L7255 76S-Pewter/Silver



L7256 4S-Black/Silver



L7256 134S-Parchment/Silver



G8555 113S-Frost/Silver

*Yardage includes binding.

BACKING: Coordinate of your choice. 4 yards

HOFFMAN FABRICS
CALIFORNIA-INTERNATIONAL

“Asuka” featuring fabrics by Hoffman California Fabrics

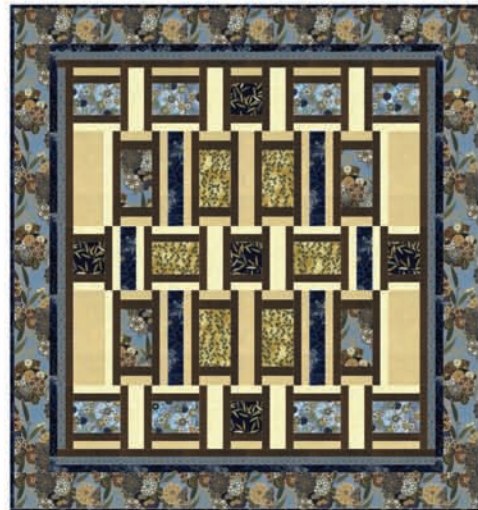
Yardage Chart

Indigo Colorway	Antique Colorway		
L7250 D7G-Dusty Blue/Gold	L7250 164G-Antique/Gold	1 3/4 yards	13 1/2 yards
L7251 68G-Indigo/Gold*	L7251 39G-Rust/Gold*	1 yard	12 yards
L7252 D7G-Dusty Blue/Gold	L7252 172G-Copper/Gold	1/3 yard	4 yards
L7253 68G-Indigo/Gold	L7253 213G-Onyx/Gold	1/4 yard	3 yards
L7254 47G-Gold/Gold	L7254 164G-Antique/Gold	3/8 yard	4 1/2 yards
L7255 D7G-Dusty Blue/Gold	L7255 164G-Antique/Gold	5/8 yard	4 yards
L7256 4G-Black/Gold	L7256 4G-Black/Gold	1 3/8 yards	15 yards
L7256 33G-Cream/Gold	L7256 33G-Cream/Gold	3/4 yard	8 yards
G8555 22G-Ivory/Gold	G8555 22G-Ivory/Gold	5/8 yard	7 1/2 yards

*Yardage includes binding.

BACKING: Coordinate of your choice. 4 yards

Indigo Colorway



L7250 D7G



L7251 68G



L7252 D7G



L7253 68G



L7256 4G



L7256 33G



G8555 22G

Antique Colorway



L7250 164G



L7251 39G



L7252 172G



L7253 213G



L7256 4G



L7256 33G



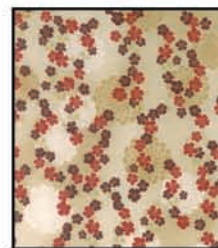
G8555 22G



L7254 47G



L7255 D7G



L7254 164G



L7255 164G

Asuka

Designed by Toby Llichko
on EQ7
Quilt size: 59" x 63"

Fabric	Pewter	Indigo	Gold	Yard-age	Used in
1	L7253-76S Pewter Silver	L7253-68G Indigo Gold	L7253-213G Onyx Gold	1/4	Block A
2	L7254-D63S Dusty Rose Silver	L7254-47G Gold Gold	L7254-164G Antique Gold	3/8	Blocks B, C
3	L7255-76S Pewter Silver	L7255-D7G Dusty Blue Gold	L7255-164G Antique Gold	5/8	Block A, Border 2
4	L7252-76S Pewter Silver	L7252-D7G Dusty Blue Gold	L7252-172G Copper Gold	1/3	Block A
5	L7256-134S Parchment Silver	G8555-22G Ivory Gold	G8555-22G Ivory Gold	5/8	Block A, B, C
6	G8555-113 S Frost Silver	L7256-33G Cream Gold	L7256-33G Cream Gold	3/4	Blocks A, B, C
7	L7251-50S Wine Silver	L7251-68G Indigo Gold	L7251-39G Rust Gold	1	Border 3
8	L7256-4S Black Silver	L7256-4G Black Gold	L7256-4G Black Gold	1-3/8	Blocks A, B, C, Border 1
9	L7250-76S Pewter Silver	L7250-D7G Dusty Blue Gold	L7250-164G Gold Gold	1-3/4	Block C and Border 4

Backing: 4 yards

PLEASE READ ALL INSTRUCTIONS BEFORE BEGINNING

General instructions

- * All seams are sewn with 1/4".
- * Press in the direction of the arrows unless instructed otherwise.
- * Place the cut strips in baggies by size and color to lessen confusion for piecing.

CUTTING INSTRUCTIONS (Based on 42" wide)

Fabric 1

Cut **five** 4-1/2" 4-1/2" squares.

Fabric 2

Cut **two** 4-1/2" x 6-1/2".

Cut **four** 4-1/2" x 8-1/2".

Fabric 3

Cut **twelve** 1-1/2" strips x WOF; sub-cut into **four** 1-1/2" x 12-1/2" and **six** 1-1/2" x 8-1/2".

Remainder will be used for the top and bottom of border 2.

Fabric 4

Cut **one** 6-1/2" strips x WOF; sub-cut into **eight** 4-1/2" x 6-1/2".

Fabric 5

Cut **eleven** 1-1/2" strips x WOF; subcut into **four** 1-1/2" x 12-1/2", **twenty-four** 1-1/2" x 8-1/2", **twelve** 1-1/2" x 6-1/2", and **eight** 1-1/2" x 4-1/2".

Fabric 6

Cut **eight** 1-1/2" strips x WOF; subcut into **twelve** 1-1/2" x 12-1/2", **eight** 1-1/2" x 6-1/2", and **eighteen** 1-1/2" x 4-1/2".

Cut **two** 4-1/2" strips x WOF; **four** 4-1/2" x 12-1/2".

Fabric 7

Cut **six** 1-1/2" strips x WOF for border #3.

Cut **two** 2-1/2" strips x WOF; subcut into **four** 2-1/2" x 12-1/2" and **two** 2-1/2" x 8-1/2".

Cut **seven** 2-1/4" strips x WOF for binding.

Fabric 8

Cut **one** 8-1/2" strips x WOF; subcut into **twenty-six** 1-1/2" x 8-1/2".

Cut **one** 1-1/2" strip x WOF; subcut into **four** 1-1/2" x 8-1/2".

Cut **one** 6-1/2" strips x WOF; subcut into **twenty** 1-1/2" x 6-1/2".

Cut **one** 12-1/2" strips x WOF; sub-cut into **twenty** 1-1/2" x 12-1/2".

Cut **one** 4-1/2" x strips WOF; subcut into **twenty-six** 1-1/2" x 4-1/2".

Cut **three** 1-1/2" strips x WOF for border #1.

Fabric 9

Cut **two** 5" x 64" and **two** 5" x 68" Fabric 9 strips by length of fabric.

Cut **four** 4-1/2" x 8-1/2".

BLOCK CONSTRUCTION

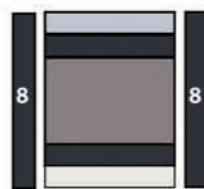
******Follow the fabric # placement in the illustrations following the steps and make the number indicated. Press all seams to the 1-1/2" strips.*

BLOCK A 10-1/2" x 6-1/2" (unfinished) 10 total

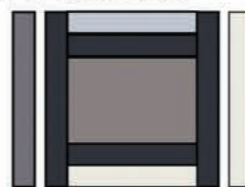
1. Sew a 1-1/2" x 6-1/2" Fabric 8 to the top and bottom of a 4-1/2" x 6-1/2" patch.



2. Sew a 1-1/2" x 6-1/2" patch to the top and bottom.



3. Sew a 1-1/2" x 8-1/2" Fabric 8 to each side.



4. Sew a 1-1/2" x 8-1/2" patch to each side.

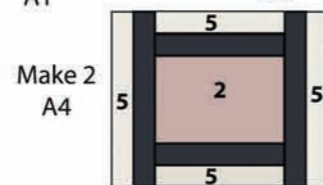
FABRIC PLACEMENT BLOCK A



Make 2
A1

Make 4
A2

Make 2
A3



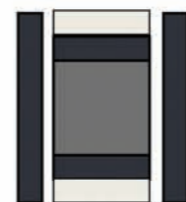
Make 2
A4

BLOCK B 8-1/2" x 8-1/2" (unfinished) 5 total

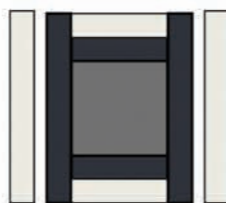
5. Sew a 1-1/2" x 4-1/2" fabric 8 to the top and bottom of a 4-1/2" x 4-1/2" patch.



6. Sew a 1-1/2" x 4-1/2" patch to the top and bottom.



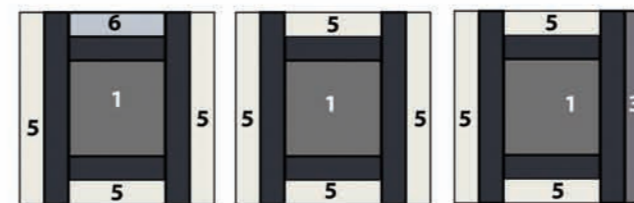
7. Sew a 1-1/2" x 8-1/2" Fabric 8 to each side.



8. Sew a 1-1/2" x 8-1/2" patch to each side.

FABRIC PLACEMENT BLOCK B

FABRIC PLACEMENT BLOCK B



Make 2
B1

Make 1
B2

Make 2
B3

BLOCK C 8-1/2" x 12-1/2" (unfinished) 8 total

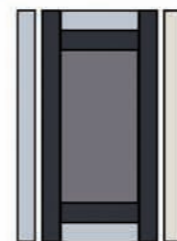
9. Sew a 1-1/2" x 4-1/2" Fabric 8 to the top and bottom of a 4-1/2" x 8-1/2" patch.



10. Sew a 1-1/2" x 4-1/2" patch to the top and bottom.

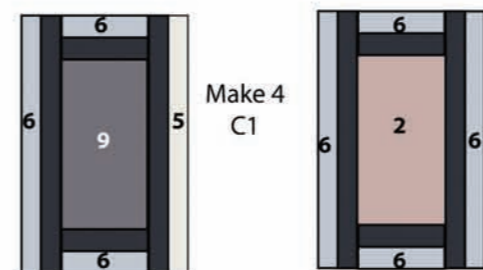


11. Sew a 1-1/2" x 12-1/2" Fabric 8 to the sides.



12. Sew a 1-1/2" x 12-1/2" patch to the sides.

FABRIC PLACEMENT BLOCK C



Make 4
C1

Make 4
C2

QUILT CONSTRUCTION

Rows 1 and 5:

13. Sew the following blocks together according to the block numbers in the illustration. Make 2 sets.

+

ROWS 1 AND 5 BLOCK PLACEMENT



Rows 2 and 4 (see illustration below instructions)
14. Sew a 1-1/2" x 12-1/2" Fabric 3 patch to a 1-1/2" x 12-1/2" Fabric 8 patch, long sides together. Make 2.

15. Sew a 4-1/2" x 12-1/2" Fabric 6 patch to Fabric 8.

16. Sew block C1 to Fabric 6, with Fabric 5 on the left side.

17. Sew a 2-1/2" x 12-1/2" Fabric 7 patch to block C1.

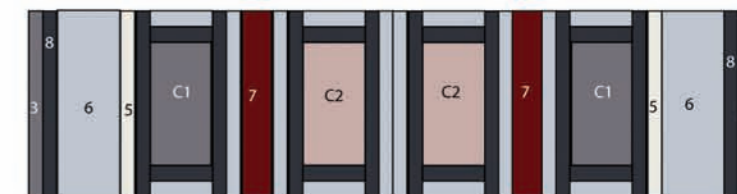
18. Sew two blocks C2 next to Fabric 7.

19. Sew a 2-1/2" x 12-1/2" Fabric 7 patch to block C2.

20. Sew block C1 to Fabric 7.

21. Sew the set from steps 13 and 14 to block C1 with Fabric 6 touching the block.

ROWS 2 AND 4 BLOCK PLACEMENT



Row 3 (see illustration below instructions)

22. Sew a 2-1/2" x 8-1/2" Fabric 7 patch to Block B3 touching the Fabric 5 side.

23. Sew Block A4 to Fabric 7.

24. Sew Block B2 to block A4.

25. Sew Block A4 to block B2.

26. Sew a 2-1/2" x 8-1/2" Fabric 7 patch to Block A4.

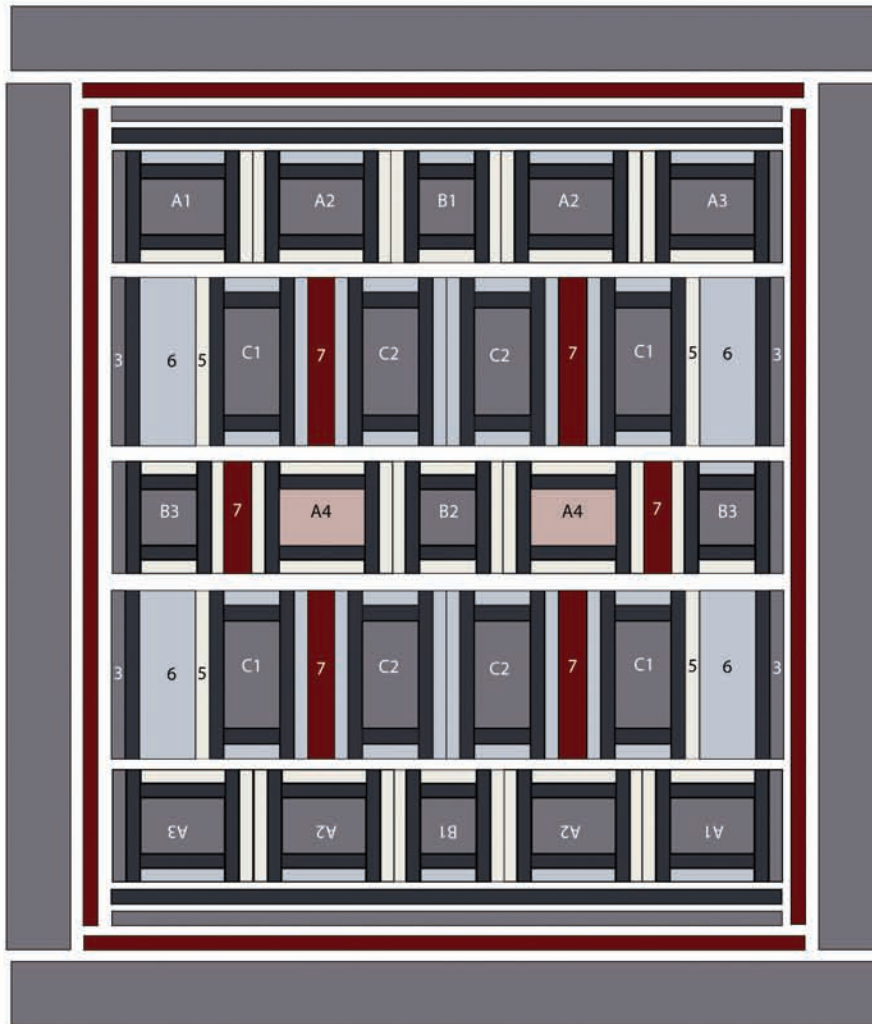
27. Sew block B3 to Fabric 7 on the Fabric 5 side.

ROW 3 BLOCK PLACEMENT



28. Sew rows together. Turn row 5 upside down. See quilt layout on following page.

QUILT LAYOUT



BORDER CONSTRUCTION

*** (You may have to adjust your border strips to your own personal measurement.)*

29. Sew **three** 1-1/2" WOF Fabric 8 strips together with diagonal seams. **Trim to two 1-1/2" x 48-1/2". Match centers, pin and sew to top and bottom.

30. Sew **three** 1-1/2" WOF Fabric 3 strips together with diagonal seams. **Trim to two 1-1/2" x 48-1/2". Match centers, pin and sew to top and bottom.

31. Sew **five** 1-1/2" WOF Fabric 7 strips together with diagonal seams. **Trim to two 1-1/2" x 52-1/2". Match centers, pin and sew to sides.

32. **Trim remaining Fabric 7 strip to two 1-1/2" x 50-1/2". Sew to top and bottom.

33. **Trim the **two** 63" x LOF Fabric 9 strips to

5" x 54-1/2". Sew to sides.

34. **Trim the **two** 68" x LOF Fabric 9 strip to 5" x 59-1/2". Sew to top and bottom.

FINISHING

Layer top, batting and pieced backing and quilt as desired.

35. Sew the **seven** 2-1/4" Fabric 7 strips, short ends together with diagonal seams. Fold and press the resulting long strip in half lengthwise, wrong sides together. Stitch to the quilt front, matching raw edges and mitering the corners.

36. Fold the binding to the quilt underside and hand or machine stitch the folded edge to the quilt back.

PUT A LABEL ON THE BACK AND ENJOY!