

BALI HAI

Quilt design by Larene Smith featuring fabrics from the "Bali Hai"
Collection by Hoffman California Fabrics



Quilt Size: 59" x 74"

Free pattern available from
www.HoffmanFabrics.com



Customer Service 1-800-547-0100

hoffmanfab@aol.com

View us! <http://hoffmanfabrics.com/>

Like us! www.facebook.com/HoffmanCaliforniaFabrics

Follow us! <https://twitter.com/#!/HoffmanFabrics>

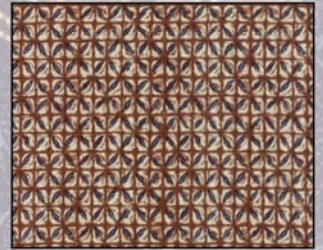
Pin us! <http://pinterest.com/hoffmanfabrics/>



L3350 #68 Indigo



L3351 #68 Indigo



L3352 #68 Indigo



L3353 #68 Indigo



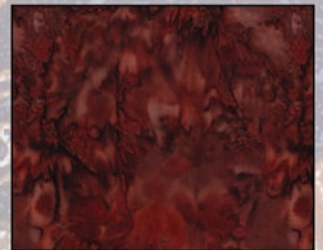
L2564 #A25 Antique Beige



L2566 #116 Harvest



L2567 #128 Midnight



1895 #386 Brownie

“Bali Hai” featuring fabrics by Hoffman California Fabrics

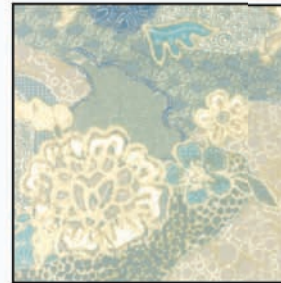
Yardage Chart

Indigo Colorway	Seaside Colorway	
L3350 #68 Indigo	L3350 #501 Sanddollar	1 7/8 yards
L3351 #68 Indigo	L3351 #484 Seaside	5/8 yard
L3352 #68 Indigo	L3352 #484 Seaside	5/8 yard
L3353 #68 Indigo	L3353 #501 Sanddollar	5/8 yard
L2566 #116 Harvest	1895 #282 Lizard	3/8 yard
1895 #386 Brownie	1895 #467 Seacliff	5/8 yard
L2564 #A25 Antique Beige	L2572 #265 Oyster	1/2 yard
L2567 #128 Midnight*	L2567 #133 Pacific*	1 1/4 yards*

*Yardage includes binding.

BACKING: Coordinate of your choice. 3 3/4 yards (1 kit); 45 yards (12 kits)

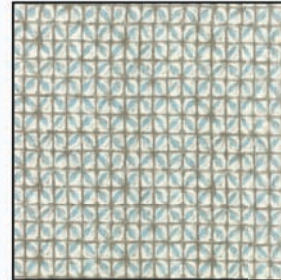
Seaside



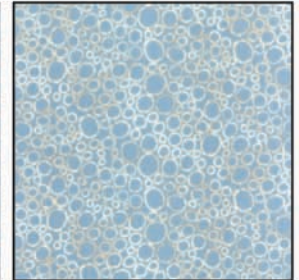
L3350 #501 Sanddollar



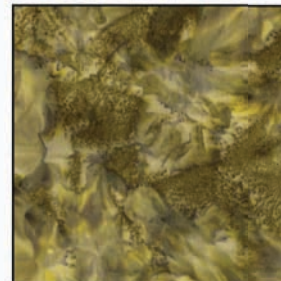
L3351 #484 Seaside



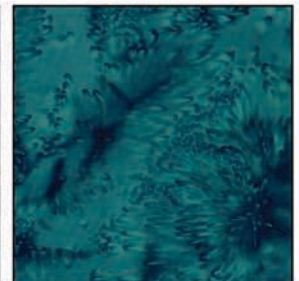
L3352 #484 Seaside



L3353 #501 Sanddollar



1895 #282 Lizard



1895 #467 Seacliff



L2572 #265 Oyster



L2567 #133 Pacific

View swatches and download quilt patterns at www.hoffmanfabrics.com

To see more quilts designed by Larene go to www.thequiltedbutton.com

Bali Hai

Bali Hai Collection by Hoffman California International Fabric

Finished Quilt Size: 59-1/2" x 74-1/2"

© 2013 – Copyright – All Rights Reserved Design and Instruction by Larene Smith of The Quilted Button



Fabric Requirements

		Indigo	Seaside
Fabric A	1 7/8 Yards	L3350-68 Indigo	L3350-501 Sanddollar
Fabric B	5/8 Yard	L3351-68 Indigo	L3351-484 Seaside
Fabric C	5/8 Yard	L3352-68 Indigo	L3352-484 Seaside
Fabric D	5/8 Yard	L3353-68 Indigo	L3353-501 Sanddollar
Fabric E	3/8 Yard	L2566-116 Harvest	1895-282 Lizard
Fabric F	5/8 Yard	1895-386 Brownie	1895-467 Seacliff
Fabric G	1/2 Yard	L2564-A25 Antique Beige	L2572-265 Oyster
Fabric H	1 1/4 Yards *	L2567-128 Midnight	L2567-133 Pacific
Backing	3 3/4 Yards	L3351-68 Indigo	L3351-484 Seaside
Batting	66" x 80"		
*includes binding			

General Information

- All seams are sewn with a 1/4" seam allowance.
- Pre-wash and press with spray starch before cutting.
- WOF = Width of Fabric.
- Press seams open as much as possible to decrease bulk.
- Finished Block is 15" Square.

Special Notions

Ruler, Rotary Cutter, Cutting Mat, Scissors, Straight Pins, Thread to match fabric, Sewing Machine in good working condition.

Instructions

Step 1 – Cutting the Fabric

1. Fabric B – Cut (2) strips at 9-1/2" x WOF – Sub-cut into (6) 9-1/2" squares for Block A.
2. Fabric A – Cut from RAW EDGE to RAW EDGE as follows:
 - a. Side Borders: Cut (2) 6-1/2" x 62-1/2" rectangles.
 - b. Top/Bottom Borders: Cut (2) 6-1/2" x 59-1/2" rectangles.
 - c. From the balance of the fabric cut (6) 9-1/2" squares for Block B.
3. Fabric C – Cut (1) strip at 9-1/2" x WOF – Sub-cut into (12) 9-1/2" x 2" rectangles and Cut (2) strips at 4-1/2" x WOF – Sub-cut into (24) 4-1/2" x 3-1/2" rectangles for Block A.
4. Fabric D – Cut (1) strip at 9-1/2" x WOF – Sub-cut into (12) 9-1/2" x 2" rectangles and Cut (2) strips at 4-1/2" x WOF – Sub-cut into (24) 4-1/2" x 3-1/2" rectangles for Block B.
5. Fabric E – Cut (2) strips at 4-1/2" x WOF – Sub-cut into (24) 4-1/2" x 2-1/2" rectangles for Block A and B.
6. Fabric F – Cut as follows:
 - a. Cut (2) strips at 2-1/2" x WOF – Sub-cut into (24) 2-1/2" squares (18) for Block A and (6) for Block B.
 - b. Cut (1) strip at 3-1/2" x WOF – Sub-cut into (12) 3-1/2" x 1-1/2" rectangles.
 - c. Cut (1) strip at 9-1/2" x WOF – Sub-cut into (12) 9-1/2" x 1" rectangles.
7. Fabric G – Cut as follows:
 - a. Cut (1) strip at 9-1/2" x WOF – Sub-cut into (24) 9-1/2" x 1-1/2" rectangles for Block A and B.
 - b. Cut (1) strip at 2-1/2" x WOF – Sub-cut into (12) 2-1/2" squares (6) for Block A and (6) for Block B.
 - c. Cut (1) strip at 3-1/2" x WOF – Sub-cut into (12) 3-1/2" x 1-1/2" rectangles for Block B.
8. Fabric H – Cut as follows:
 - a. Cut (1) strip at 9-1/2" x WOF – Sub-cut into (12) 9-1/2" x 1" rectangles for Block A.
 - b. Cut (2) strips at 2-1/2" x WOF – Sub-cut into (24) 2-1/2" squares (6) for Block A and (18) for Block B.
 - c. Cut (6) strips at 1-1/2" x WOF for the INNER BORDER.
 - d. Cut (7) strips at 2-1/2" x WOF for the BINDING.

Step 2 – Sewing Block A

Note: Refer to Example A when sewing the SETS for Block A.

Set A

9. Sew (1) Fabric C 9-1/2" x 2" rectangle to (1) Fabric H 9-1/2" x 1" rectangle together – Make (12) 9-1/2" x 2-1/2" rectangles.
10. Sew (1) Fabric F 2-1/2" square to the top of the rectangle just completed – Make (6).
11. Sew (1) Fabric E 4-1/2" x 2-1/2" rectangle to the bottom to finish SET A at 15-1/2" x 2-1/2" – Make (6).

Block A



Set B

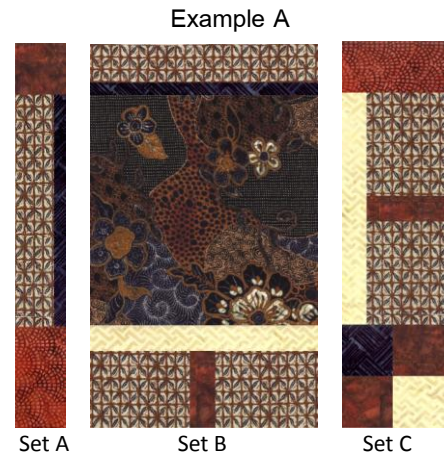
12. Sew (1) Fabric C 4-1/2" x 3-1/2" rectangle to each 3-1/2" edge of (1) Fabric F 3-1/2" x 1-1/2" rectangle to make a new rectangle at 3-1/2" x 9-1/2" – Make (12).
13. Sew (1) Fabric G 1-1/2" x 9-1/2" rectangle to (1) of the rectangles just completed to make a new rectangle at 4-1/2" x 9-1/2" – Make (12).
14. Sew (1) of the rectangles just completed to the BOTTOM of (1) Fabric A 9-1/2" square – Make (6).
15. Sew (1) of the rectangles left over from SET A Instruction No. 9 to the TOP to finish SET B at 9-1/2" x 15-1/2" – Make (6).

Set C

16. Sew (1) Fabric F 2-1/2" square to (1) Fabric H 2-1/2" square – Make (6) 2-1/2" x 4-1/2" rectangles.
17. Sew (1) Fabric F 2-1/2" square to (1) Fabric G 2-1/2" square – Make (6) 2-1/2" x 4-1/2" rectangles.
18. Sew the TWO rectangles together with the FABRIC F in opposite corners to make a "4-Patch" – Make (6) 4-1/2" squares.
19. Sew (1) of the "4-Patches" to the BOTTOM of (1) of the 9-1/2" x 4-1/2" rectangles from SET B Instruction No. 13 – Make (6).
20. Sew (1) Fabric E 2-1/2" x 4-1/2" rectangle to the TOP of the rectangle just completed to finish SET C at 4-1/2" x 15-1/2" – Make (6).

Sewing the Sets Together to Finish Block A

21. Sew SET A to the LEFT side of SET B then sew SET C to the RIGHT side to finish Block A at 15-1/2" square – Make (6).



Step 3 – Sewing Block B

Note: Refer to Example B when sewing the SETS for Block B.

Set A

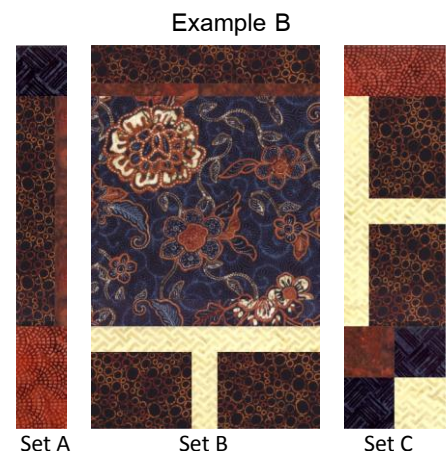
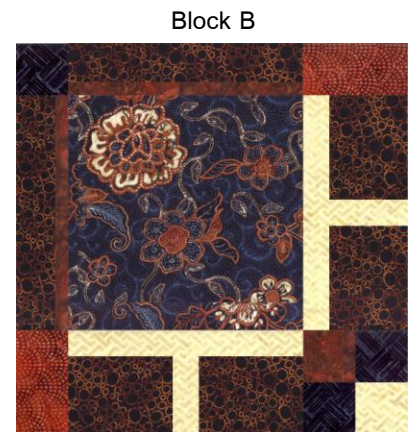
22. Sew (1) Fabric D 9-1/2" x 2" rectangle to (1) Fabric F 9-1/2" x 1" rectangle together – Make (12) 9-1/2" x 2-1/2" rectangles.
23. Sew (1) Fabric H 2-1/2" square to the top of the rectangle just completed – Make (6).
24. Sew (1) Fabric E 4-1/2" x 2-1/2" rectangle to the bottom to finish SET A at 15-1/2" x 2-1/2" – Make (6).

Set B

25. Sew (1) Fabric D 4-1/2" x 3-1/2" rectangle to each 3-1/2" edge of (1) Fabric G 3-1/2" x 1-1/2" rectangle to make a new rectangle at 3-1/2" x 9-1/2" – Make (12).
26. Sew (1) Fabric G 1-1/2" x 9-1/2" rectangle to (1) of the rectangles just completed to make a new rectangle at 4-1/2" x 9-1/2" – Make (12).
27. Sew (1) of the rectangles just completed to the BOTTOM of (1) Fabric B 9-1/2" square – Make (6).
28. Sew (1) of the rectangles left over from SET A Instruction No. 22 to the TOP to finish SET B at 9-1/2" x 15-1/2" – Make (6).

Set C

29. Sew (1) Fabric F 2-1/2" square to (1) Fabric H 2-1/2" square – Make (6) 2-1/2" x 4-1/2" rectangles.



30. Sew (1) Fabric H 2-1/2" square to (1) Fabric G 2-1/2" square – Make (6) 2-1/2" x 4-1/2" rectangles.
31. Sew the TWO rectangles together with the FABRIC H in opposite corners to make a "4-Patch" – Make (6) 4-1/2" squares.
32. Sew (1) of the "4-Patches" to the BOTTOM of (1) of the 9-1/2" x 4-1/2" rectangles from SET B Instruction No. 26 – Make (6).
33. Sew (1) Fabric E 2-1/2" x 4-1/2" rectangle to the TOP of the rectangle just completed to finish SET C at 4-1/2" x 15-1/2" – Make (6).

Sewing the Sets Together to Finish Block B

34. Sew SET A to the LEFT side of SET B then sew SET C to the RIGHT side to finish Block B at 15-1/2" square – Make (6).

Step 4 – Sewing the Quilt Center

Note: The BLOCKS will rotate so use the "Block Layout" as a guide. There are THREE Blocks per row and FOUR rows. The rows will measure 15-1/2" x 45-1/2" when the THREE Blocks are sewn together.

35. Row 1: Block B, Block A, Block B
36. Row 2: Block A, Block B, Block A
37. Row 3: Block B, Block A, Block B
38. Row 4: Block A, Block B, Block A
39. Sew the rows together to finish the quilt center at 45-1/2" x 60-1/2".



Step 5 – Adding the Borders

Inner Border

40. Sew the Fabric H 1-1/2" strips together at the 1-1/2" edge then sub-cut into (2) 1-1/2" x 60-1/2" rectangles (SIDES) and (2) 1-1/2" x 47-1/2" rectangles (TOP/BOTTOM).
41. Sew the SIDES first and then sew on the TOP/BOTTOM to finish the Inner Border at 47-1/2" x 62-1/2".

Outer Border

42. Sew on the Fabric A 6-1/2" x 62-1/2" rectangles to the SIDES.
43. Sew on the Fabric A 6-1/2" x 59-1/2" rectangles to the TOP/BOTTOM to finish the quilt top at 59-1/2" x 74-1/2".

Step 6 – Finishing the Quilt

44. Layer the backing, batting, and quilt top and quilt as desired.
45. Using the Fabric H 2-1/2" strips sew on the binding to finish the quilt.