

# BIRDS AND BLOSSOMS

Quilt Design by Nancy Rink Featuring fabrics from the "Birds and Blossoms" Collection by Punch Studio for Hoffman California Fabrics



K7115 451G  
Cornflower Gold



K7117 18G  
Royal Gold



K7116 6G  
Brown Gold



K7118 451G  
Cornflower Gold



K7119 D27G  
Dusty Peach Gold



K7119 451G  
Cornflower Gold



K7119 6G  
Brown Gold



J9216 A64G  
Antique Tan Gold



J9216 59G  
Coral Gold



J79216 18G  
Royal Gold



G8555 3G  
White Gold



To see more quilts designed by Nancy go to [www.nancyrinkdesigns.com](http://www.nancyrinkdesigns.com)

Free pattern available from  
[www.HoffmanFabrics.com](http://www.HoffmanFabrics.com)

Quilt Size 59" x 68"

Style	
K7115 451G-Cornflower Gold	3/8 yard
K7117 18G-Royal Gold	3/8 yard
K7116 6G-Brown Gold	fat 1/4
K7118 451G-Cornflower Gold	3/8 yard
K7119 D27G-Dusty Peach Gold	7/8 yard
K7119 451G-Cornflower Gold	fat 1/4
K7119 6G-Brown Gold*	1 yard
J9216 A64G-Antique Tan Gold	fat 1/4
J9216 59G-Coral Gold	fat 1/4
J9216 18G-Royal Gold	2 yards
G8555 3G-White Gold	fat 1/4

\*Yardage includes binding.

BACKING: Coordinate of your choice. 4 3/8 yards (1 kit); 52 1/2 yards (12 kits)

**HOFFMAN FABRICS**

CALIFORNIA-INTERNATIONAL

# Birds and Blossoms

Finished Quilt Size: 59" x 68"

Finished Block Size and Number: 9" x 9"/20 and 4 1/2" x 4 1/2"/40

Designed by Nancy Rink of Nancy Rink Designs

## FABRIC REQUIREMENTS

Fabric is *Birds and Blossoms* by Hoffman California Fabrics

Fat Quarter each of

White Gold G8555  
Coral Gold J9216 59G  
Cornflower Gold K7119 451G  
Antique Tan Gold J9216 A64G

1/4 yard of Brown Gold K7116 6G

3/8 yard of  
Cornflower Gold K7118 451G

5/8 yard each of  
Royal Gold K7117 18G  
Cornflower Gold K7115 451G

3/4 yard of  
Dusty Peach Gold K7119 D27G

7/8 yard of Brown Gold K7119 6G

1 3/4 yards Royal Gold J9216 18G

4 3/8 yards Backing Fabric

## GENERAL INFO

All seam allowances 1/4"

WOF = Width of Fabric

LOF = Length of Fabric

\*Extra yardage included for fussy cutting



## CUTTING



From the White Gold G8555, cut:

Two (2" x 20") strips, recut into twenty (2" x 2") A squares

Two (2" x 20") strips, recut into forty (1" x 2") B rectangles

Two (3" x 20") strips, recut into forty (1" x 3") C rectangles



From the Coral Gold J9216 59G, cut:

Two (3" x 20") strips, recut into forty (1" x 3") C rectangles

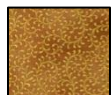
Two (4" x 20") strips, recut into forty (1" x 4") D rectangles



From the Cornflower Gold K7119 451G, cut:

Five (1 ½" x 20") strips, recut into ten (1 ½" x 7 ½") G rectangles

Five (1 ½" x 20") strips, recut into ten (1 ½" x 9 ½") H rectangles



From the Antique Tan-Gold J9216 A64G, cut:

Two (2" x 20") strips, recut into forty (1" x 2") B rectangles

Two (3" x 20") strips, recut into forty (1" x 3") C rectangles



From the Cornflower Gold K7118 451G, cut:

One (4" x WOF") strip, recut into forty (1" x 4") D rectangles

One (5" x WOF") strip, recut into forty (1" x 5") E rectangles



From the Brown Gold K7119 6G, cut:

One (2" x WOF") strip, recut into twenty (2" x 2") A squares

One (4" x WOF") strip, recut into forty (1" x 4") D rectangles

One (5" x WOF") strip, recut into forty (1" x 5") E rectangles

Seven (2 ¼" x WOF) strips for double-fold binding



From the Royal Gold K7117 18G, cut:

One 7 ½" x WOF strip, recut into five 7 ½" x 7 ½" F squares

Six 1 ½" x WOF strips, pieced together end-to-end and recut into two (1 ½" x 54 ½") side borders and two (1 ½" x 47 ½") top/bottom borders



From the Cornflower Gold K7115 451G, cut:

Two (7 ½" x WOF) strips, recut into ten 7 ½" x 7 ½" F squares



From the Dusty Peach Gold K7119 D27G, cut:

One (3" x WOF") strip, recut into forty (1" x 3") C rectangles

One (4" x WOF") strip, recut into forty (1" x 4") D rectangles

Two (1 ½" x WOF") strips, recut into ten (1 ½" x 7 ½") G rectangles

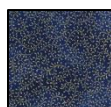
Three (1 ½" x WOF") strips, recut into ten (1 ½" x 9 ½") H rectangles

Six (1 ½" x WOF) strips, pieced end-to-end and recut into two (1 ½" x 60 ½") side borders and two (1 ½" x 54") top/bottom borders



From the Brown Gold K7116 6G, cut:

One (7 ½" x WOF) strip, recut into five 7 ½" x 7 ½" F squares



From the Royal Gold J9216 18G, cut:

Four (1 ½" x WOF") strips, recut into twenty (1 ½" x 7 ½") G rectangles

Five (1 ½" x WOF") strips, recut into twenty (1 ½" x 9 ½") H rectangles

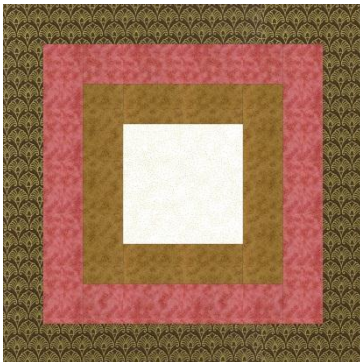
Six (2 ½" x WOF) strips, pieced end-to-end and recut into two (2 ½" x 56 ½") side borders and two (2 ½" x 51 ½") top/bottom borders

Eight (3 ½" x WOF) strips, pieced end-to-end and recut into two (3 ½" x 62 ½") side borders and two (3 ½" x 59 ½") top/bottom borders

## SEWING

1. **Blossom Block.** Sew the B through E patches to the center A patch in alphabetical order, pressing seams toward each strip as it is added to the block. (*Block Assembly Diagram*)

There are two different colorways of this block, one with a light center and one with a dark. Make 20 blocks in each colorway shown below.



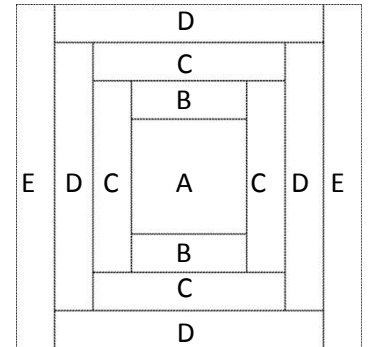
**Colorway One  
(Make 20)**

White Gold-center  
Antique Tan-round one  
Coral Gold –round two  
Brown Gold –round three



**Colorway Two  
(Make 20)**

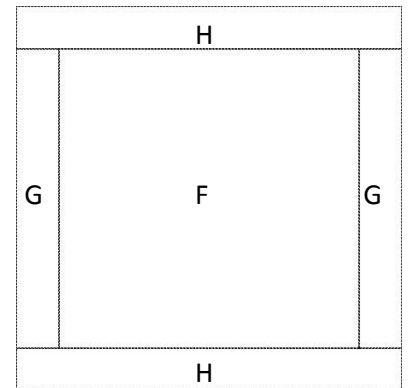
Brown Gold -center  
White Gold -round one  
Dusty Peach –round two  
Cornflower Gold–round three



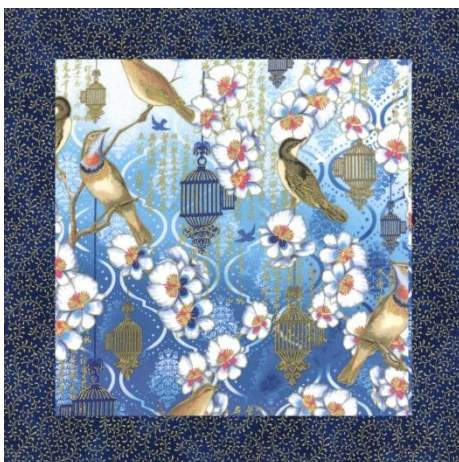
**Blossom Block  
Assembly Diagram**

2. **Bird Block.** Sew a matching set of G and H patches to the center F patch in alphabetical order, pressing seams toward each strip as it is added to the block. (*Block Assembly Diagram*)

There are three different colorways of this block. Refer to the colorway diagrams below for color and number of blocks to make.

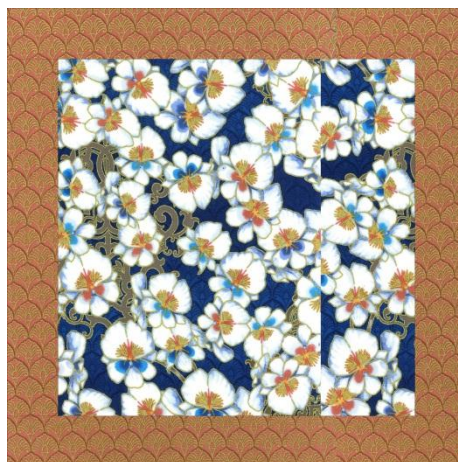


**Bird Block  
Assembly Diagram**



**Colorway One  
(Make 10)**

Cornflower Gold Bird Print center



**Colorway Two  
(Make 5)**

Royal Gold Floral center



**Colorway Three  
(Make 5)**

Brown Gold Print center

## QUILT ASSEMBLY

1. This quilt is assembled in vertical rows. Lay out the Blossom blocks and the Bird blocks, referring to quilt image. Sew the Blossom blocks together in pairs; then, sew together the vertical rows, pressing seams toward the Bird Blocks. Sew rows together.
2. Inner Border. Sew the Cornflower Blue Floral (1 ½" x 54 ½") borders to sides of quilt. Press seams toward borders. Sew the (1 ½" x 47 ½") borders to top and bottom of the quilt. Press seams toward borders.
3. Border Two. Sew the Royal Gold (2 ½" x 56 ½") side borders and (2 ½" x 51 ½") top/bottom borders to quilt. Press seams toward center of quilt.
4. Border Three. Sew the Dusty Peach (1 ½" x 60 ½") side borders and (1 ½" x 54") top/bottom borders to quilt. Press seams toward Dusty Peach border.
5. Border Four. Sew the remaining Royal Gold borders to sides and top and bottom of quilt. Press seams toward Dusty Peach fabric.

## FINISHING

1. Layer top, batting, and backing. Quilt as desired. Note, an all-over design in a thread that blends well with the fabrics is a good choice for the quilting.
2. Bind with the Brown Gold Print (2 ¼" x WOF) strips.

Visit Hoffman California Fabrics at [hoffmanfabrics.com](http://hoffmanfabrics.com) for more great patterns and fabrics.  
Ask for Hoffman at your local quilt shop.



Nancy Rink offers a wide variety of quilt patterns and quilt related items on her website [nancyrinkdesigns.com](http://nancyrinkdesigns.com)