



Always Blooming



Always Blooming

Blooms on the Square quilt by Heidi Pridemore using the *Always Blooming* fabric collection by Susy Pilgrim Waters for P&B Textiles

Size: 66" square

Yardage

Fabric A	ABLO 961 Z	3/4 yard
Fabric B	ABLO 967 P	1/4 yard
Fabric C	ABLO 962 MU	1 1/3 yards
Fabric D	ABLO 961 G	1/3 yard
Fabric E	ABLO 964 O	1/3 yard
Fabric F	ABLO 965 P	1/3 yard
Fabric G	ABLO 965 O	1/3 yard
Fabric H	ABLO 966 E	1 3/4 yards
Fabric I	ABLO 968 G	1 1/3 yards
Fabric J	ABLO 967 G	7/8 yard
Fabric K	ABLO 968 B	7/8 yard
Fabric L	ABLO 966 P	1/4 yard
Backing	any ABLO fabric	
Fusible web		

Cutting

All strips are cut across the width of the fabric unless otherwise noted.

Fabric A (ABLO 961 Z), cut:

- (1) 8 1/2" x 42" strip; cut into (1) 8 1/2" square and (8) 2 1/2" x 8 1/2" strips
- (1) 12 1/2" x 42" strip; cut into (8) 2 1/2" x 12 1/2" strips

Fabric B (ABLO 967 P), cut:

- (1) 4 1/2" x 42" strip; cut into (4) 4 1/2" squares

Fabric C (ABLO 962 MU), cut:

- (8) 5 1/2" x 42" strips. Piece the strips and cut (4) 5 1/2" x 68" outer-border strips.

Fabric D (ABLO 961 G), cut:

- (2) 3 1/2" x 42" strips; cut into (2) 3 1/2" x 12 1/2" strips and (2) 3 1/2" x 18 1/2" strips

Fabric E (ABLO 964 O), cut:

- (20) petals, prepared with fusible web

Fabric F (ABLO 965 P), cut:

- (20) petals, prepared with fusible web

Fabric G (ABLO 965 O), cut:

- (20) petals, prepared with fusible web

Fabric H (ABLO 966 E), cut:

- (2) 24 1/2" x 42" strips; cut into (4) 12 1/2" x 24 1/2" strips
- (2) 2 1/2" x 42" strips; cut into (2) 2 1/2" x 8 1/2" strips and (2) 2 1/2" x 12 1/2" strips
- (2) 1 1/2" x 42" strips; cut into (2) 1 1/2" x 20 1/2" strips and (2) 1 1/2" x 18 1/2" strips

Fabric I (ABLO 968 G), cut:

- (6) 2 1/2" x 42" strips. Piece the strips and cut (2) 2 1/2" x 52 1/2" inner-border strips and (2) 2 1/2" x 56 1/2" inner-border strips.
- (32) leaves, prepared with fusible web
- (7) 2 1/2" x 42" binding strips.

Fabric J (ABLO 967 G), cut in the order listed:

- (2) 2 1/2" x 20 1/2" lengthwise strips
- (2) 2 1/2" x 24 1/2" crosswise strips

Fabric K (ABLO 968 B), cut:

- (3) 2 1/2" x 42" strips; cut into (4) 2 1/2" x 12 1/2" strips and (2) 2 1/2" x 24 1/2" strips
- (3) 2 1/2" x 42" strips. Piece the strips and cut (2) 2 1/2" x 52 1/2" strips.
- (1) 8 1/2" x 42" strip; cut into (8) 2 1/2" x 8 1/2" strips and (8) 2 1/2" x 4 1/2" strips

Fabric L (ABLO 966 P), cut:

- (12) flower centers, prepared with fusible web

Appliqué Flower Blocks

1. Following the manufacturer's instructions, trace the listed number of each shape onto the paper side of the fusible web. Roughly cut out each shape about 1/8" outside the drawn lines.

2. Referring to the cutting list, fuse each shape to the wrong side of the fabrics as indicated. Cut out each shape on the drawn lines and remove the paper backing.

3. Referring to the quilt photo for placement guidance, fuse five fabric E petals, five, fabric F petals, five fabric G petals, three fabric L flower centers, and eight leaves onto each fabric H $12\frac{1}{2}$ " x $24\frac{1}{2}$ " strip. Finish the raw edges with a decorative stitch such as a satin or buttonhole stitch. Make a total of four Flower Blocks

Corner Blocks

4. Sew fabric K $2\frac{1}{2}$ " x $4\frac{1}{2}$ " strips to opposite sides of a fabric B square. Sew fabric K $2\frac{1}{2}$ " x $8\frac{1}{2}$ " strips to the top and bottom of the fabric B square to make a center unit. Make a total of four center units.

5. Sew fabric A $2\frac{1}{2}$ " x $8\frac{1}{2}$ " strips to opposite sides of a center unit. Sew fabric A $2\frac{1}{2}$ " x $12\frac{1}{2}$ " strips to the top and bottom of the unit to complete one corner block. Make a total of four corner blocks.

Center Block Assembly

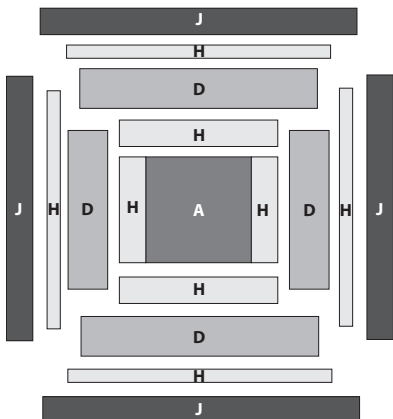
Refer to Center Block assembly diagram for steps 6–9.

6. Sew fabric H $2\frac{1}{2}$ " x $8\frac{1}{2}$ " strips to opposite sides of the fabric A square. Sew fabric H $2\frac{1}{2}$ " x $12\frac{1}{2}$ " strips to the top and bottom of the fabric A square to make the block unit.

7. Sew fabric D $3\frac{1}{2}$ " x $12\frac{1}{2}$ " strips to opposite sides of the unit. Sew fabric D $3\frac{1}{2}$ " x $18\frac{1}{2}$ " strips to the top and bottom of the unit.

8. Sew fabric H $1\frac{1}{2}$ " x $18\frac{1}{2}$ " strips to opposite sides of the unit. Sew fabric H $1\frac{1}{2}$ " x $20\frac{1}{2}$ " strips to the top and bottom of the unit.

9. Sew fabric J $2\frac{1}{2}$ " x $20\frac{1}{2}$ " strips to opposite sides of the unit. Sew fabric J $2\frac{1}{2}$ " x $24\frac{1}{2}$ " strips to the top and bottom of the unit to complete the center block.



Quilt Top Assembly

Refer to the quilt photo for placement guidance throughout.

10. Join two corner blocks, two fabric K $2\frac{1}{2}$ " x $12\frac{1}{2}$ " strips, and one Flower block as shown in the photo to make the top row. Repeat to make the bottom row.

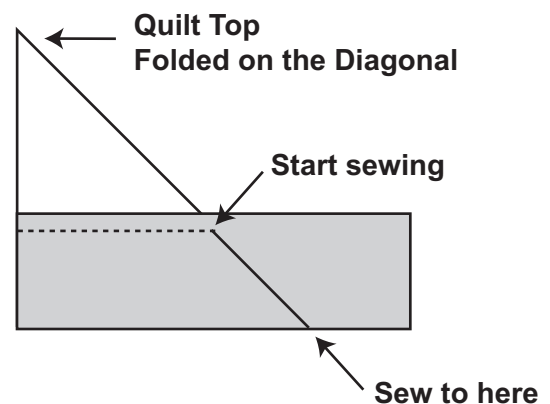
11. Join two Flower blocks, two fabric K $2\frac{1}{2}$ " x $24\frac{1}{2}$ " strips, and the Center block as shown in the photo to make the middle row.

12. Join the three rows and two fabric K $2\frac{1}{2}$ " x $52\frac{1}{2}$ " strips to make the quilt top center.

13. Sew fabric I $2\frac{1}{2}$ " x $52\frac{1}{2}$ " strips to opposite sides of the quilt top. Sew fabric I $2\frac{1}{2}$ " x $56\frac{1}{2}$ " strips to the top and bottom of the quilt top to complete the inner border.

14. Center and pin fabric C strips to each side of the quilt top. Sew the strips starting and stopping $\frac{1}{4}$ " from the raw edge and backstitch. **Do not trim the excess.**

15. To miter each corner, fold the quilt top diagonally with wrong sides together. This should align the strips from adjacent sides. Starting at the sewn seam as shown below, draw a 45° line to the edge of the strip. Sew on the drawn line. Trim the excess fabric leaving a $\frac{1}{4}$ " seam allowance. Repeat with the remaining corners of the quilt top.



16. Layer the quilt top with batting and backing; baste. Quilt as desired. Using the fabric I $2\frac{1}{2}$ "-wide strips, bind the edges to finish.

Always Blooming

Fabric Collection by **Susy Pilgrim Waters**



ABLO 960 W — shown selvage to selvage



ABLO 961 G



ABLO 960 P



ABLO 961 Z



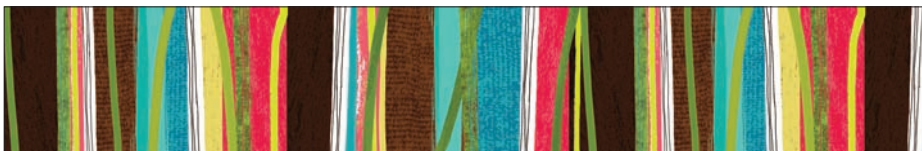
ABLO 963 MU — 12.5% scale



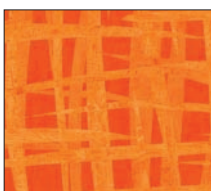
ABLO 964 O



ABLO 964 T



ABLO 962 MU



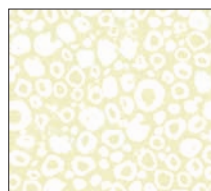
ABLO 965 O



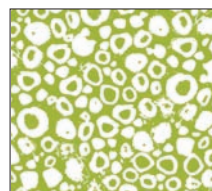
ABLO 965 P



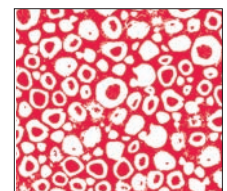
ABLO 965 T



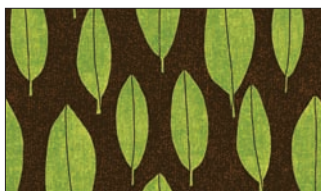
ABLO 966 E



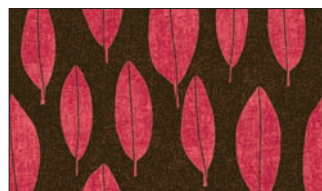
ABLO 966 G



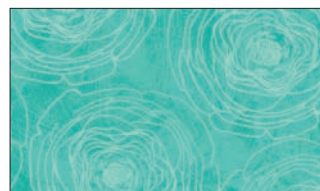
ABLO 966 P



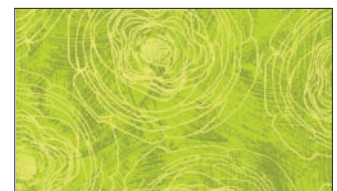
ABLO 967 G



ABLO 967 P



ABLO 968 B



ABLO 968 G



P&B Textiles ♦ www.pbtex.com ♦ 800-351-9087

45-47 Washington St, Pawtucket, RI 02860 ♦ 237 W. 35th St, 11th floor, New York, NY 10001

100% cotton ♦ Cold wash & dry ♦ 43"/44" ♦ Colors may vary due to printing process

All fabrics shown at 25% scale except where indicated otherwise.