

# Flower Drops



# Flower Drops

**Blossoms** quilt by Corey Yoder  
using the *Flower Drops* and *Water Drops*  
fabric collections by P&B Textiles  
Size: 66" x 76"

## Yardage

Fabric A	FDRO 250 D	1 7/8 yards
Fabric B	FDRO 251 E	1/4 yard
Fabric C	FDRO 251 K	1/3 yard
Fabric D	WDRO 256 Y	3/8 yard
Fabric E	FDRO 255 K	1 yard
Fabric F	WDRO 256 A	1 yard
Fabric G	FDRO 254 G	1/4 yard
Fabric H	CSNE W*	2 7/8 yards
Backing	any FDRO fabric	4 3/4 yards

\* Color Spectrum solid white

## Cutting

All strips are cut across the width of the fabric.

### From fabric A (FDRO 250 D), cut:

- (7) 6 1/2" x 42" strips. Piece strips and cut (2) 6 1/2" x 64 1/2" outer-border strips and (2) 6 1/2" x 66 1/2" outer-border strips.
- (3) 2 1/2" x 42" strips; cut into (40) 2 1/2" squares
- (2) 3" x 42" strips; cut into (20) 3" squares

### From fabric B (FDRO 251 E), cut:

- (1) 2 1/2" x 42" strip; cut into (12) 2 1/2" squares
- (1) 3" x 42" strip; cut into (6) 3" squares

### From fabric C (FDRO 251 K), cut:

- (2) 2 1/2" x 42" strips; cut into (24) 2 1/2" squares
- (1) 3" x 42" strip; cut into (12) 3" squares

### From fabric D (WDRO 256 Y), cut:

- (3) 2 1/2" x 42" strips; cut into (43) 2 1/2" squares
- (1) 3 1/4" x 42" strip; cut into (6) 3 1/4" squares

### From fabric E (FDRO 255 K), cut:

- (3) 2 1/2" x 42" strips; cut into (48) 2 1/2" squares
- (2) 3 1/4" x 42" strips; cut into (12) 3 1/4" squares
- (8) 2 1/4" x 42" binding strips

### From fabric F (WDRO 256 A), cut:

- (1) 2 1/2" x 42" strip; cut into (9) 2 1/2" squares
- (2) 2 3/8" x 42" strips; cut into (18) 2 3/8" squares. Cut the squares in half diagonally to yield 36 triangles
- (3) 1 1/2" x 42" strips; cut into (9) 1 1/2" x 10 1/2" rectangles
- (3) 2 1/4" x 42" strips; cut into (40) 2 1/4" squares
- (4) 1 3/4" x 42" strips; cut into (80) 1 3/4" squares
- (2) 1 1/2" x 42" strips; cut into (10) 1 1/2" x 6 1/2" rectangles

### From fabric G (FDRO 254 G), cut:

- (2) 2" x 42" strips; cut into (36) 2" squares

### From fabric H (CSNE W), cut:

- (3) 2 1/2" x 42" strip; cut into (45) 2 1/2" squares
- (1) 3 7/8" x 42" strip; cut into (9) 3 7/8" squares. Cut the squares in half diagonally to yield 18 triangles.
- (5) 5" x 42" strips; cut into: (18) 2" x 5" rectangles (9) 5" x 5 1/2" rectangles (9) 3" x 5" rectangles (9) 3 1/2" x 5" rectangles (9) 1" x 5" rectangles
- (3) 2 1/4" x 42" strips; cut into (40) 2 1/4" squares
- (4) 3" x 42" strips; cut into (38) 3" squares and (20) 1 1/2" x 3" rectangles



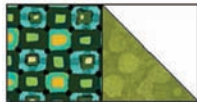
- (2) 3 1/4" x 42" strips; cut into (18) 3 1/4" squares
- (12) 2 1/2" x 42" strips. Piece strips and cut (6) 2 1/2" x 60 1/2" sashing and inner-border strips and (2) 2 1/2" x 54 1/2" inner-border strips.

## Large Flower Block Assembly

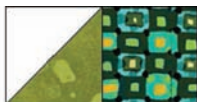
### LEAVES AND STEMS

**1.** Draw a diagonal line from corner to corner on the wrong side of nine fabric H 2 1/2" squares. Layer a marked square right sides together with a fabric F 2 1/2" square and sew 1/4" from each side of the marked line. Cut the squares apart on the drawn line to make two half-square-triangle units. Press the seam allowances toward fabric F. Trim the units to measure 2" x 2". Make a total of 18 half-square-triangle units.

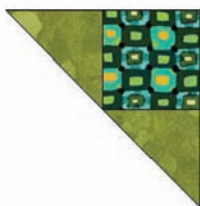
**2.** Sew a fabric G square to the left side of nine half-square-triangle units as shown. Press the seam allowances toward fabric G.



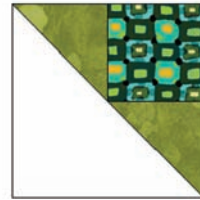
**3.** Sew a fabric G square to the right side of the remaining half-square-triangle units as shown. Press the seam allowances toward fabric G.



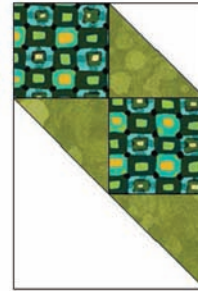
**4.** Sew a fabric F triangle to the left side of an fabric G square as shown. Press the seam allowances toward the square. Then sew a fabric F triangle to the bottom of the square and press. Make a total of 18 units.



**5.** Sew a fabric H 3 7/8" triangle to the unit from step 4. Press the seam allowances toward the fabric H triangle. Make a total of 18 units (illustration next column).



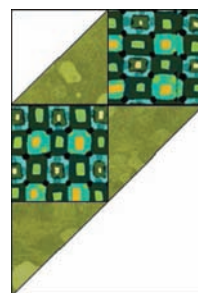
**6.** Sew a unit from step 2 to the top of a unit from step 5 and press. Make a total of nine units.



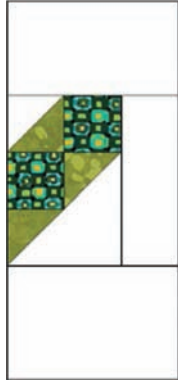
**7.** Sew a fabric H 2" x 5" rectangle to the left side of the unit from step 6. Sew a fabric H 5" x 5 1/2" rectangle to the bottom of the unit. Sew a fabric H 1" x 5" rectangle to the top of the unit. Press all seam allowances toward the fabric H rectangles. Make a total of nine units.



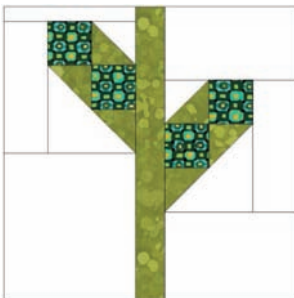
**8.** Sew a unit from step 3 to the top of a unit from step 5 as shown and press. Make a total of nine units.



**9.** Sew a fabric H 2" x 5" rectangle to the right of a unit from step 8. Sew a fabric H 3 1/2" x 5" rectangle to the bottom of the unit. Sew a fabric H 3" x 5" rectangle to the top of the unit. Press all seam allowances toward the fabric H rectangles. Make a total of nine units.



**10.** Join one unit from step 7, one fabric F 1 1/2" x 10 1/2" rectangle, and one unit from step 9 as shown to make a stem/leaf unit. Press the seam allowances toward the center. The unit should measure 10 1/2" square. Make a total of nine stem/leaf units.



## FLOWERS

**11.** Repeat step 1 (Large Flower Block Assembly), using the fabric H 3" squares and the fabric C 3" squares to make 24 half-square-triangle units. Trim the units to measure 2 1/2" x 2 1/2".

**12.** Lay out four units from step 11, four fabric C 2 1/2" squares, and one fabric D 2 1/2" square in a nine-patch arrangement as shown. Join the pieces into rows; press the seam allowances toward the fabric C squares. Join the rows to make a flower center and press. Make a total of six black flower centers (illustration next column).



**13.** In the same manner as before make 12 half-square-triangle units, using six marked fabric H 3" squares and six fabric B 3" squares. Then join the half-square-triangle units, fabric B 2 1/2" squares, and fabric D 2 1/2" squares to make three yellow flower centers. Set aside the remaining marked fabric H 3" squares to make the small red flower units.



**14.** Repeat step 1 (Large Flower Block Assembly), using the fabric H 3 1/4" square and the fabric E 3 1/4" square to make 24 half-square-triangle units. Set aside the remaining marked 3 1/4" squares for step 18.

**15.** Layer two units from step 14 right sides together, making sure the center seam is going in the same direction on both units and a fabric H triangle is on top of a fabric E triangle. On the wrong side of the top unit, draw a diagonal line from corner to corner, across the sewn seam. Sew 1/4" from each side of the drawn line. Cut on the drawn line to make two quarter-square-triangle units. The units should measure 2 1/2" x 2 1/2". Make a total of 24 quarter-square-triangle units.



**16.** Sew two fabric E 2 1/2" squares to each unit from step 15 as shown to make 24 side units. Press the seam allowances toward the fabric E squares (illustration next page).



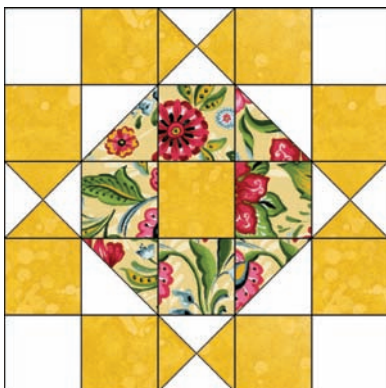
**17.** Lay out four side units from step 16, one center unit from step 12, and four fabric H  $2\frac{1}{2}$ " squares in three rows as shown. Join the pieces into rows and then join the rows to make a flower unit. The unit should measure  $10\frac{1}{2}$ " square. Make a total of six black flower blocks.



**18.** Use the remaining marked fabric H  $3\frac{1}{4}$ " squares and the fabric D  $3\frac{1}{4}$ " squares to make 12 half-square-triangle units. Then repeat step 15 to make 12 quarter-square-triangle units.

**19.** Sew two fabric D  $2\frac{1}{2}$ " squares to each unit from step 18 to make 12 side units. Press the seam allowances toward the fabric D squares.

**20.** Lay out four side units from step 19, one center unit from step 13, and four fabric H  $2\frac{1}{2}$ " squares in three rows as shown. Join the pieces into rows and then join the rows to make a flower unit. Make a total of three yellow flower blocks.



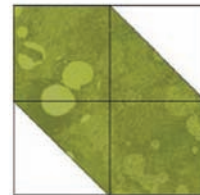
**21.** Sew a stem/leaf unit to the bottom of each flower unit as shown in the quilt image to make six black flower blocks and three yellow flower blocks.

## Small Flower Block Assembly

### LEAVES AND STEMS

**1.** Repeat step 1 (Large Flower Block Assembly), using the fabric H  $2\frac{1}{4}$ " squares and the fabric F  $2\frac{1}{4}$ " squares make 80 half-square-triangle units. Trim the units to measure  $1\frac{3}{4}$ " x  $1\frac{3}{4}$ ".

**2.** Lay out two fabric F  $1\frac{3}{4}$ " squares and two units from step 1 in a four-patch arrangement as shown. Join the pieces into rows. Press the seam allowances toward the fabric F squares. Join the rows to make a leaf unit and press. Make a total of 40 units.



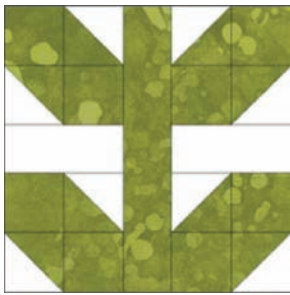
**3.** Sew together two leaf units and one fabric H  $1\frac{1}{2}$ " x 3" rectangle, making sure to orient the units as shown. Press the seam allowances toward the rectangle. Make a total of 10 units.



**4.** Sew together two leaf units and one fabric H  $1\frac{1}{2}$ " x 3" rectangle, making sure to orient the units as shown. Press the seam allowances toward the rectangle. Make a total of 10 units.



**5.** Join one unit from step 4, one unit from step 5, and one fabric F  $1\frac{1}{2}$ " x  $6\frac{1}{2}$ " rectangle as shown to make a stem/leaf unit. Press the seam allowances toward the center. The unit should measure  $6\frac{1}{2}$ " square. Make a total of 10 units.



## FLOWERS

**6.** Repeat step 1 (Large Flower Block Assembly), using the fabric H  $3$ " squares and the fabric A  $3$ " squares to make 40 half-square-triangle units. Trim the units to measure  $2\frac{1}{2}$ " x  $2\frac{1}{2}$ ".

**7.** Lay out four units from step 6, four fabric A  $2\frac{1}{2}$ " squares, and one fabric D  $2\frac{1}{2}$ " square in a nine-patch arrangement as shown. Join the pieces into rows; press the seam allowances toward the fabric A squares. Join the rows to make a flower unit and press. Make a total of 10 red flower units.



**8.** Sew a stem/leaf unit to the bottom of each red flower unit as shown in the quilt image to make 10 red flower blocks.

## Quilt Top Assembly

**1.** Join three black flower blocks to make a  $60\frac{1}{2}$ "-long column. Make two columns.

**2.** Join three yellow flower blocks to make a  $60\frac{1}{2}$ "-long column.

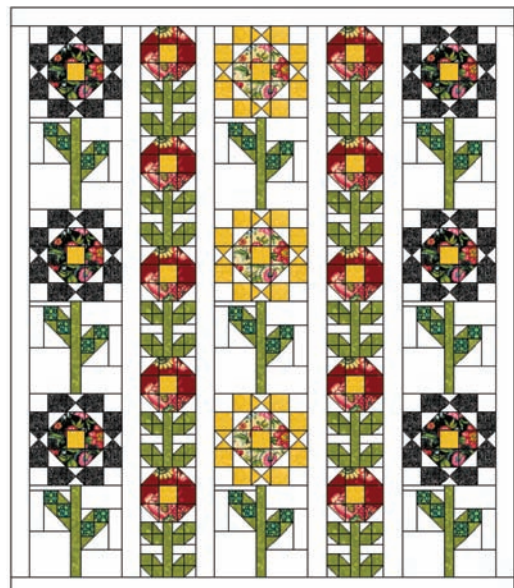
**3.** Join five red flower blocks to make a  $60\frac{1}{2}$ "-long column. Make two columns.

**4.** Lay out the columns from steps 1–3 and four fabric H  $2\frac{1}{2}$ " x  $60\frac{1}{2}$ " strips as shown in the quilt layout diagram. Join the columns and strips to make the quilt center.

**5.** Sew fabric H  $2\frac{1}{2}$ " x  $60\frac{1}{2}$ " strips to opposite sides of the quilt center. Sew fabric H  $2\frac{1}{2}$ " x  $54\frac{1}{2}$ " strips to the top and bottom of the quilt center.

**6.** Sew fabric A  $6\frac{1}{2}$ " x  $64\frac{1}{2}$ " outer-border strips to opposite sides of the quilt. Sew fabric A  $6\frac{1}{2}$ " x  $66\frac{1}{2}$ " outer-border strips to the top and bottom of the quilt.

**7.** Layer the quilt top with batting and backing; baste. Quilt as desired. Using the fabric E binding strips, bind the edges to finish.



QUILT LAYOUT



# Flower Drops

Fabric Collection by **P&B Textiles**



FDRO 250 D



FDRO 250 K



FDRO 251 E



FDRO 251 K



FDRO 253 D



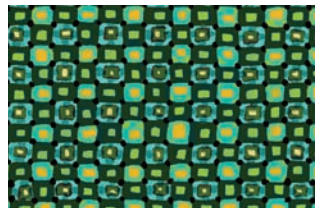
FDRO 253 G



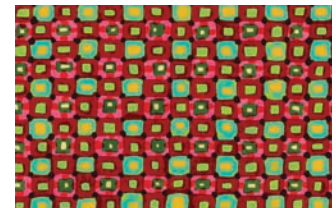
FDRO 252 E



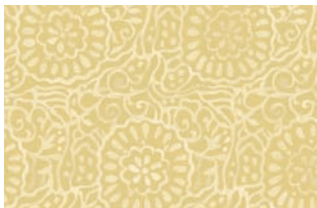
FDRO 252 K



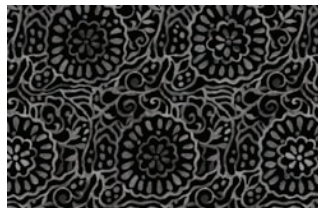
FDRO 254 G



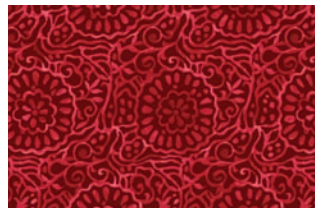
FDRO 254 R



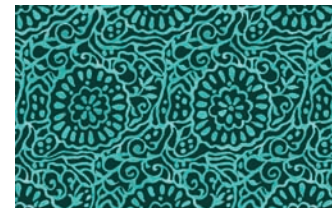
FDRO 255 E



FDRO 255 K



FDRO 255 R



FDRO 255 T



**P&B Textiles** ♦ [www.pbtex.com](http://www.pbtex.com) ♦ 800-351-9087  
45-47 Washington St, Pawtucket, RI 02860 ♦ 237 W. 35th St, 11th floor, New York, NY 10001

△ 100% cotton ♦ Cold wash & dry ♦ 43"/44" ♦ Colors may vary due to printing process  
All fabrics shown at 30% scale.