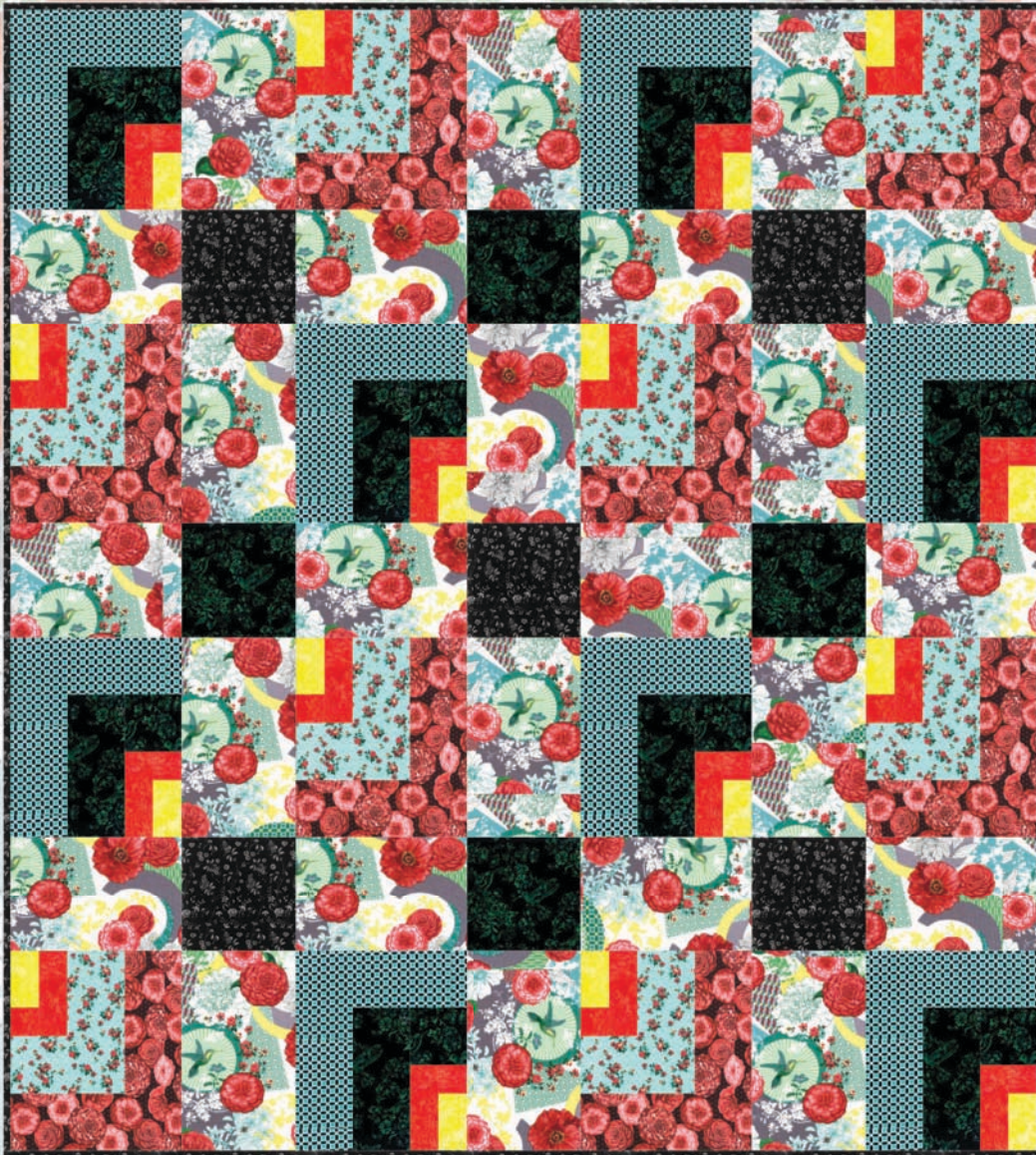


BOHEMIA

FRINGE

Quilt design by Denise Russart featuring fabrics from the "Bohemia" Collection by Fringe Studio for Hoffman California Fabrics



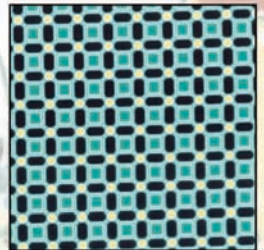
L3355 #469 Nasturtium



L3356 #469 Nasturtium



L3357 #469 Nasturtium



L3359 #21 Teal

Quilt Size: 70" x 80"

Free pattern available from www.HoffmanFabrics.com

HOFFMAN FABRICS
CALIFORNIA-INTERNATIONAL

Customer Service 1-800-547-0100

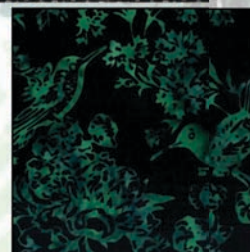
hoffmanfab@aol.com

View us! <http://hoffmanfabrics.com/>

Like us! www.facebook.com/HoffmanCaliforniaFabrics

Follow us! <https://twitter.com/#!/HoffmanFabrics>

Pin us! <http://pinterest.com/hoffmanfabrics/>



BF 1 #157 Verde



L3358 #4 Black



BF 2 #469 Nasturtium



BF 3 #9 Yellow

“Bohemia” featuring fabrics by Fringe for Hoffman California Fabrics

Yardage Chart

Nasturtium Colorway	Azalea Colorway	
L3355 #469 Nasturtium	L3355 #557 Azalea	2 ¼ yards
L3356 #469 Nasturtium	L3356 #557 Azalea	⅔ yards
L3357 #469 Nasturtium	L3357 #178 Leaf	½ yard
L3359 #21 Teal	L3359 #31 Emerald	⅔ yard
BF 1 #157 Verde	L3358 #68 Indigo	¾ yard
L3358 #4 Black*	BF 4 #139 Periwinkle*	1 ⅛ yards*
BF 2 #469 Nasturtium	BF 3 #31 Emerald	⅓ yard
BF 3 #9 Yellow	BF 2 #497 Guava	¼ yard

*Yardage includes binding.

BACKING: Coordinate of your choice. 5 yards (1 kit); 60 yards (12 kits)

Azalea



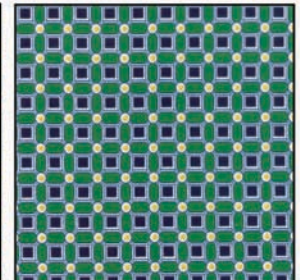
L3355 #557 Azalea



L3356 #557 Azalea



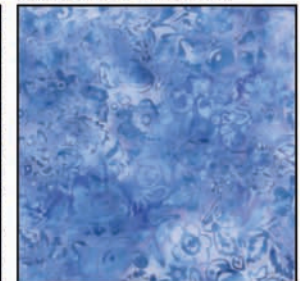
L3357 #178 Leaf



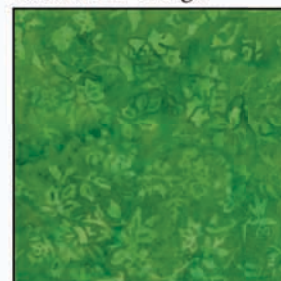
L3359 #31 Emerald



L3358 #68 Indigo



BF 4 #139 Periwinkle



BF 3 #31 Emerald



BF 2 #497 Guava

View swatches and download quilt patterns at www.hoffmanfabrics.com

To see more quilts designed by Denise go to www.justquiltin.wordpress.com

Bohemia Collection by Hoffman California Fabrics

by Denise Russart – Quilt Size: 70" x 80"

	<u>Yards</u>	<u>Nasturtium Colorway</u>	<u>Azalea Colorway</u>
Fabric 1	2+1/4	L3355 469 Nasturtium	L3355 557 Azalea
Fabric 2	2/3	L3356 469 Nasturtium	L3356 557 Azalea
Fabric 3	1/2	L3357 469 Nasturtium	L3357 178 Leaf
Fabric 4	2/3	L3359 21 Teal	L3359 31 Emerald
Fabric 5	3/4	BF-1 157 Verde	L3358 68 Indigo
Fabric 6*	1+1/8	L3358 4 Black	BF-4 139 Periwinkle
Fabric 7	1/3	BF-2 469 Nasturtium	BF-3 31 Emerald
Fabric 8	1/4	BF-3 9-Yellow	BF-2 497 Guava
Backing	5.0 yards	Coordinate of your choice	Coordinate of your choice

* includes binding yardage

- Please read all instructions before beginning.
- Use scant 1/4" seam allowance throughout. Press seams open to reduce bulk.
- WOF = width of fabric from selvage to selvage
- SC = "subcut" strips previously cut into specific smaller pieces
- Images in instructions show the Nasturtium colorway fabrics

Cutting Instructions

Fabric 1: Cut 3 strips 14.5" x WOF

- SC (12) 8.5" x 14.5"

Cut 4 strips 8.5" x WOF

- SC (12) 12.5" x 8.5"

Fabric 3: Cut 1 strip 10.5" x WOF

- SC (8) 4.5" x 10.5"

Cut 1 strip 4.5" x WOF

- SC (8) 4.5" x 4.5"

Fabric 5: Cut 1 strip 10.5" x WOF

- SC (8) 4.5" x 10.5"

Cut 1 strip 4.5" x WOF

- SC (8) 4.5" x 4.5"

Cut 1 strip 8.5" x WOF

- SC (4) 8.5" x 8.5"

Fabric 7: Cut 1 strip 2.5" x WOF

Cut 1 strip 6.5" x WOF

- SC (16) 2.5" x 6.5"

Cut 1 strip 2.5" x WOF

Fabric 2: Cut 1 strip 8.5" x WOF

- SC (8) 4.5" x 8.5"

Cut 1 strip 14.5" x WOF

- SC (8) 4.5" x 14.5"

Fabric 4: Cut 1 strip 8.5" x WOF

- SC (8) 4.5" x 8.5"

Cut 1 strip 14.5" x WOF

- SC (8) 4.5" x 14.5"

Fabric 6: Cut 2 strips 8.5" x WOF

- SC (5) 8.5" x 8.5"

Cut 8 strips 2.5" x WOF [Binding]

Fabric 8: Cut 1 strip 4.5" x WOF

Assembly Instructions:



Stitch Fabric 8 4.5" strip to Fabric 7 2.5" strip to make a strip set. SC this strip set into (16) 2.5" wide segments.



Stitch Fabric 7 2.5" x 6.5" sections to left side of segments made in previous step. Set 8 of these sections aside.

Stitch Fabric 3 4.5" square to top of eight sections from previous step as shown in image.



Stitch Fabric 3 4.5" x 10.5" section to left of eight blocks as shown.



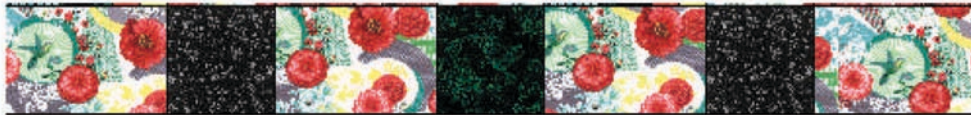
Stitch Fabric 2 4.5" x 8.5" section to top of block and then stitch Fabric 2 4.5" x 14.5" section to left of block. Blocks measure 12.5" x 14.5." Set these blocks aside.



To eight sections set aside in step 2 above, you will add fabrics in the same manner to make the block shown at left as follows:

Stitch Fabric 5 4.5" square to top of sections and Fabric 5 4.5" x 10.5" piece to left side.
Stitch Fabric 4 4.5" x 8.5" piece to top of block and Fabric 4 4.5" x 14.5" piece to left side.
Blocks measure 12.5" x 14.5".

Lay out the pieces to match the image below, alternating 12.5" x 8.5" pieces of Fabric 1 with 8.5" squares of Fabrics 5 and 6 as shown. Make 2.



Fabric 1 ↑ Fab. 6 ↑ Fabric 1 ↑ Fab. 5 ↑ Fabric 1 ↑ Fab. 6 ↑ Fabric 1 ↑



Fabric 1 ↑ Fab. 5 ↑ Fabric 1 ↑ Fab. 6 ↑ Fabric 1 ↑ Fab. 5 ↑ Fabric 1 ↑

Make 1 strip to match image at left, noting placement of Fabric 5 and 6 squares are different than prior strips.



Following the image, lay out the log cabin like blocks, in orientation shown, alternating with 8.5" x 14.5" Fabric 1 pieces. Stitch row. Make two.



Layout remaining blocks as shown and stitch into row. Make 2.

Following main quilt image, lay out all rows and stitch together.

Binding: Stitch all binding strips together end to end on 45 degree angle. Trim seam allowance and press open. Press binding in half lengthwise to make double-fold binding.

Backing: Cut backing fabric into two 2-1/2 yard sections and seam vertically. Layer, quilt, bind and enjoy!