

# "Bohemian Rhapsody"

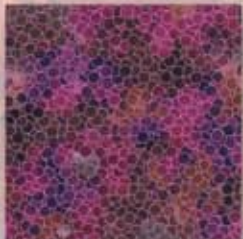
Quilt Design by Toby Lischko Featuring Fabrics in the "Bohemian Rhapsody" Collection From Hoffman California Fabrics



H8740 Flame #67



H8744 Lilac #30



H8742 Spice #160



H8743 Flame #67



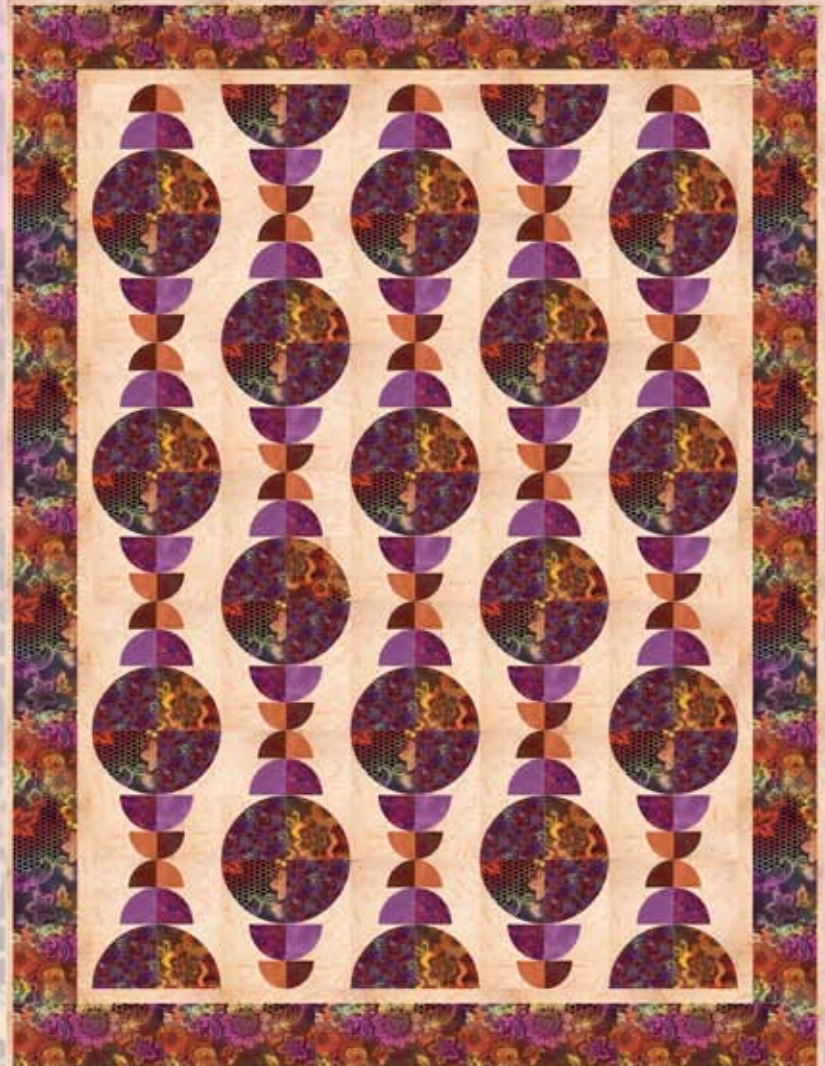
H8744 Paprika #389



1895 Creamsicle #480



H8741 Spice #160



To see more quilts designed by Toby go to [www.gatewayquiltsnstuff.com](http://www.gatewayquiltsnstuff.com)

Quilt Size : 62" x 82"

Free Pattern available from  
[www.HoffmanFabrics.com](http://www.HoffmanFabrics.com)

**HOFFMAN FABRICS**  
CALIFORNIA-INTERNATIONAL

Style	1 Kit
1895 Creamsicle #480	4½yds*
H8740 Flame #67	2 ¼ yds
H8741 Spice #160	7/8 yd
H8742 Spice #160	½ yd
H8743 Flame #67	⅓ yd
H8744 Paprika #389	⅓ yd
H8744 Lilac #30	½ yd
Backing (your favorite "Bohemian Rhapsody" fabric)	5 yds

\* Includes binding yardage

# Bohemian Rhapsody

Quilt size: 62-1/2" x 82-1/2"

Bohemian Rhapsody collection  
Hoffman Fabrics

Flame version  
Block size: 10"

Designed by Toby Lischko  
on EQ7

## *Fabric Requirements*

1/3 yard each of the following:

**G8743 67-Flame**

**G8744 389-Paprika**

1/2 yard each of the following:

**G8744 30-Lilac**

**G8742 160-Spice**

7/8 yard **G8741 160-Spice**

2-1/4 yards **G8740 67-Flame**

4-1/2 yards **1895 Creamsicle**

5 yards any of the **Bohemian Rhapsody**  
collection for backing

68" x 88" batting

## **PLEASE READ ALL INSTRUCTIONS BEFORE BEGINNING**

- An accurate 1/4" seam is essential to the piecing of this quilt. All seams are sewn with 1/4" seams.
- When sewing curves it is easier to sew with the concave piece on top (the inside curve).
- Be sure to press adjoining section seams in opposite directions.
- For making templates, copy template pages and tape to template material. Then cut on solid lines.
- If you do not like sewing curves see alternate sewing and cutting instructions.
- To reduce bulk when piecing blocks, press seams open.

## *Cutting* (WOF = width of fabric)

**Cut (3) 2-3/4" strips WOF each from  
G8744 Paprika and G8743 Flame**

**Cut (4) 3-3/4" strips WOF each from  
G8742 Spice and G8744 Lilac**

**Cut (5) 5" strips WOF each from  
G8740 Flame and G8741 Spice**

**From 1895 Creamsicle cut:**

**(3) 10-1/2" strips WOF; subcut into (35)  
2-3/4" rectangles.**

**(4) 10-1/2" strips WOF; subcut into (35)  
3-3/4" rectangles.**

**(5) 10-1/2" strips WOF; subcut into (35) 5"  
rectangles.**

## **Borders and Binding**

**1895 Creamsicle**

**Cut (7) 1-3/4" strips WOF for border 1**

**Cut (8) 2-1/4" strips WOF for binding**

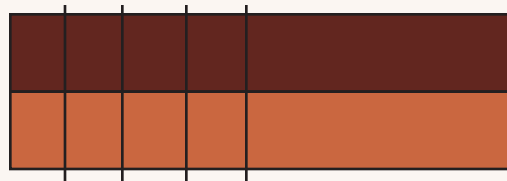
**G8740 Flame**

**Cut (8) 5-1/2" strips WOF for border 2**

## *Block construction*

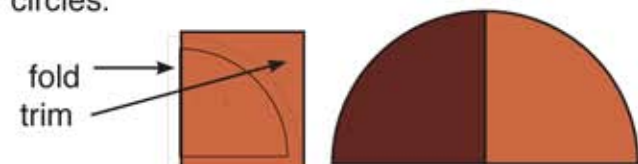
## **General piecing instructions**

1. Sew the 2-3/4" **G8744 Paprika** to 2-3/4" **G8743 Flame** together to make a 2 strip panel. Press to darker fabric. Make 3 panels. Cross-cut the panels into (35) 2-3/4" segments.



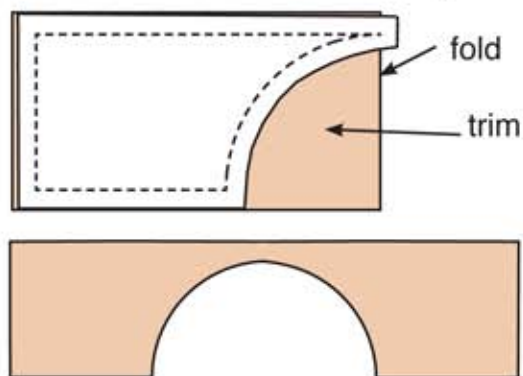
2. In the same manner: Sew the 3-3/4" **G8742 Spice** to 3-3/4" **G8744 Lilac**. Make 4 panels.. Crosscut the panels into (35) 3-3/4" segments. Sew the 5" **G8740 Flame** to 5" **G8741 Spice**. Make 5 panels. Crosscut the panels into (35) 5" segments.

3. Fold a 2-3/4" two-piece segment in half, wrong sides together, along the seam line and align the seam to the solid sewing line of **Template A** as shown. Cut out (35) half-circles.

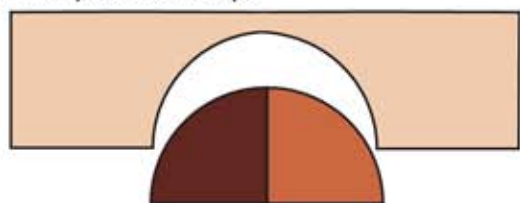


Repeat using the 3-3/4" segments and Template B and the 5" segments and Template C.

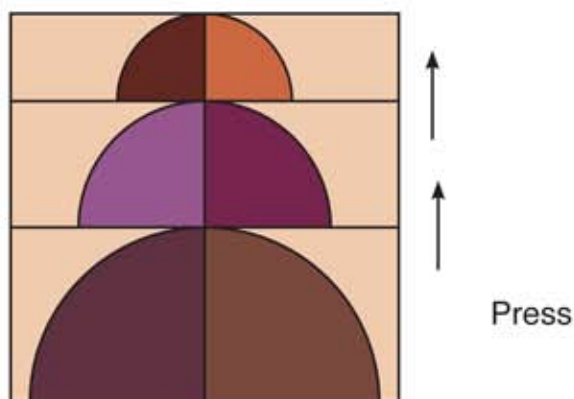
4. Fold the **1895 Creamsicle** rectangles in half lengthwise. Match the corresponding **Templates D, E, and F** with each rectangle. Align the sewing line point on the templates with the fold of the fabric and trim away the curve.



5. Sew the corresponding sizes of Creamsicle background to the same size pieced half-circles. Clip the background curve about 1/4" apart, just to the seam allowance. Pin, matching centers and ends and sew with the background piece on top.



6. Sew a 3-3/4" row between a 2-3/4" row and a 5" row to make a 10-1/2" block. Press seams towards the flat bottom of the half-circles.



### Quilt construction

Following the photo illustration, lay out the blocks in 7 rows down and 5 blocks across, making sure to rotate every other block. Sew the blocks together in each row. Join the rows and press the seams open first in rows and then the rows together.

### Border construction

1. Sew the (7) 1-3/4" **1895 Creamsicle** strips together with diagonal seams. Measure through the vertical center (top to bottom) and cut two strips this length. Sew on sides, press to border.
2. Repeat step one, measuring through the horizontal (side to side) center. Sew on top and bottom. Press to border.
3. Sew the (8) 5-1/2" **G8740 Flame** strips together with diagonal seams. Measure through the vertical center of the quilt and cut two strips to this length. Sew on sides, press to border.
4. Repeat step three, measuring through the horizontal center. Sew to top and bottom. Press to border.

Layer, quilt, and bind with the 2-1/4" **1895 Creamsicle** binding strips, sewn together with diagonal seams, using a French binding technique.

Remember to put a label on the back and ENJOY!

## Templates

When printing templates, be sure to set your printer scale setting to "none" or "no scaling" before printing to assure that they are the accurate size.

## Alternate piecing instructions

Don't like to sew curves? Leave the **1895 Creamsicle** background pieces as a rectangles. Follow piecing instructions for the half-circles. Turn curved edge under 1/4" on the A, B or C section. Matching centers, machine applique' with invisible thread to the corresponding size background rectangle. Trim away to 1/4" from curve on the back. Sew the three rows together as in the remaining directions.

