

Breezy

Fabric Collection by P&B Textiles



FREE PATTERN

Ask for our fabrics
in your local
independent
quilt shop!

Boxy Blooms quilt by Corey Yoder • Size: 71" x 89 1/2"



pbtex.com

Boxy Blooms

Quilt by Corey Yoder using the *Breezy* fabric collection from P & B Textiles

Size: 71" x 89 1/2"

Yardage

BREE 331 W for block centers and outer border	1 1/4 yards
BREE 332 AK for blocks and binding	2 yards
BREE 330 O for block centers	1/3 yard
BREE 330 R for block centers	1/3 yard
BREE 330 S for block centers	1/3 yard
BREE 331 K for block centers	1/3 yard
BREE 333 R for blocks	1/4 yard
BREE 334 G for blocks	1/4 yard
BREE 333 Y for blocks	1/3 yard
BREE 334 R for blocks	1/3 yard
BREE 333 G for sashing and inner border	1 1/8 yards
BREE 334 K for blocks and middle border	7/8 yard
BREE 334 WK for blocks	1 1/2 yards
BREE 334 WR for sashing	1/8 yard
Any BREE fabric for backing	5 5/8 yards

Cutting

From BREE 330 O, cut:

- (3) 9 1/2" squares (block center)

From BREE 331 W, cut:

- (3) 9 1/2" squares (block center)
- (8) 3 1/2" x 42" outer-border strips

From each of BREE 330 R, BREE 330 S, and BREE 331 K, cut:

- (2) 9 1/2" squares (6 total; block center)

From each of BREE 333 Y and BREE 334 R, cut:

- (4) 2" x 42" strips; cut (6) 2" x 9 1/2" rectangles and (6) 2" x 12 1/2" rectangles (inner frames)

From each of BREE 333 R and BREE 334 G, cut:

- (3) 2" x 42" strips; cut (4) 2" x 9 1/2" rectangles and (4) 2" x 12 1/2" rectangles (inner frames)

From BREE 334 K, cut:

- (3) 2" x 42" strips; cut (4) 2" x 9 1/2" rectangles and (4) 2" x 12 1/2" rectangles (inner frames)
- (8) 2 1/2" x 42" middle-border strips

From BREE 334 WK, cut:

- (16) 2" x 42" strips
- (5) 3 1/2" x 42" strips; cut into (48) 3" squares

From BREE 332 AK, cut:

- (16) 2" x 42" strips
- (5) 2" x 42" strips; cut into (96) 2" squares

From BREE 334 WR, cut:

- 2" x 42" strip; cut into (6) 2" squares

From BREE 333 G, cut:

- (1) 18 1/2" x 42" strip; cut into (17) 2" x 18 1/2" sashing strips
- (7) 2" x 42" inner-border strips

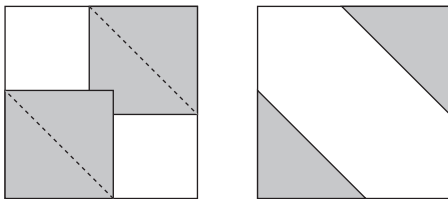
3 1/2"

Block Assembly

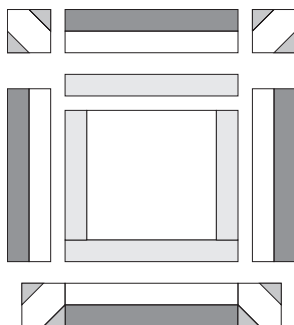
1. Referring to the photo for placement guidance, lay out one $9\frac{1}{2}$ " block center square, two matching inner frame $2" \times 9\frac{1}{2}"$ rectangles, and two matching inner frame $2" \times 12\frac{1}{2}"$ rectangles. Sew the shorter rectangles to opposite sides of the square and then sew the longer rectangles to the two remaining sides of the square. The block should measure $12\frac{1}{2}"$ square. Repeat the process to make a total of 12 block centers.

2. Sew each 334 WK $2"$ -wide strip to the long side of a 332 AK $2"$ -wide strip to make a strip set. Make a total of 16 strip sets. From each strip set, cut three $12\frac{1}{2}"$ -long rectangles (48 total).

3. Draw a line from corner to corner on the wrong side of each 332 AK square. Place a marked square on opposite corners of a 334 WK square, right sides together. Sew on the marked lines and trim the excess corner fabric, leaving a $\frac{1}{4}"$ -wide seam allowance. Press the seam allowances toward the resulting triangles. Make a total of 48 units.



4. Lay out one block center from step 1, four rectangles from step 2, and four units from step 3 in a nine-patch arrangement, referring to the photo for placement guidance. Join the pieces into rows and then join the rows to complete the block. The blocks should measure $18\frac{1}{2}" \times 18\frac{1}{2}"$. Repeat to make a total of 12 blocks.



Quilt Top Assembly

5. Join three blocks and two $2" \times 18\frac{1}{2}"$ sashing strips, alternating them as shown in the photo, to make a block row. Make a total of four rows.

6. Join three $2" \times 18\frac{1}{2}"$ sashing strips and two 334 WR sashing squares, alternating them as shown in the photo, to make a sashing row. Make a total of three rows.

7. Alternately, sew together the block rows and sashing rows.

8. Join the 333 G inner-border strips end to end to make a long strip. Measure the length of the quilt top. Cut two strips to this length and sew them to the sides of the quilt top. Measure the width of the quilt top. Cut two strips to this length and sew them to the top and bottom of the quilt top for the inner border.

9. Join the 334 K middle-border strips end to end. In the same manner as before, measure, cut, and sew the strips to the quilt top for the middle border.

10. Join the 331 W outer border strips end to end. In the same manner as before, measure, cut, and sew the strips to the quilt top for the outer border.

11. Layer the quilt top with batting and backing; baste. Quilt as desired. Using the $2\frac{1}{4}"$ -wide binding strips, bind the edges to finish.



Breezy

Fabric Collection by P&B Textiles



BREE 330 O



BREE 330 R



BREE 330 S



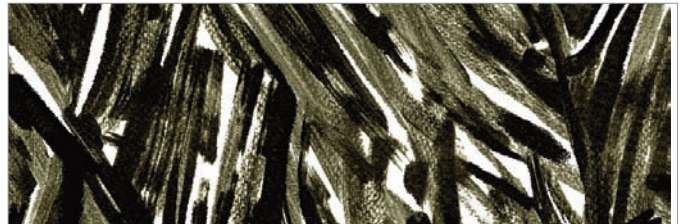
BREE 331 K



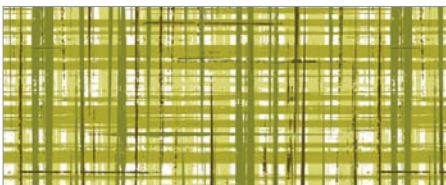
BREE 331 W



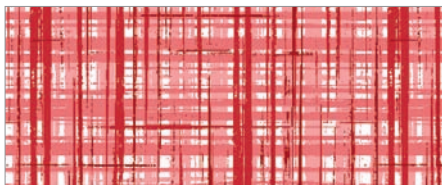
BREE 332 AK



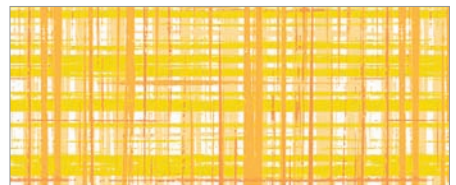
BREE 332 K



BREE 333 G



BREE 333 R



BREE 333 Y



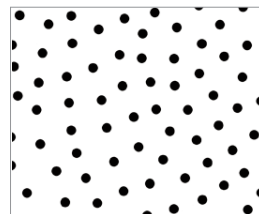
BREE 334 G



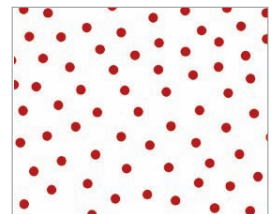
BREE 334 K



BREE 334 R



BREE 334 WK



BREE 334 WR

P&B Textiles ♦ 1580 Gilbreth Road, Burlingame, CA 94010 ♦ 800-852-2327

For wholesale orders: 14683 Midway Road, Addison, TX 75001 ♦ 800-351-9087 ♦ www.pbtex.com

1 100% cotton ♦ Cold wash & dry ♦ 43"/44" ♦ Colors may vary due to printing process ♦ 11/12
All fabrics shown at 30% scale.