

# *Classical Elements*



# Classical Elements

*Steel Whirligigs* quilt by Heidi Pridemore  
using the *Classical Elements* fabric collection  
by P&B Textiles • Size: 52" x 68"

## Yardage

Fabric A	CLEL 513 S	5/8 yard
Fabric B	CLEL 505 S	5/8 yard
Fabric C	CLEL 504 LS	1 yard
Fabric D	CLEL 514 S	7/8 yard
Fabric E	CLEL 512 LS	1 yard
Fabric F	CLEL 508 LS	5/8 yard
Fabric G	CWEA 200 S	7/8 yard
Fabric H	CWEA 200 K	1 1/3 yards
Fabric I	ESS2 570 Y	7/8 yard
Fabric J	CWEA 200 Y	7/8 yard
Backing	any CLEL fabric	3 1/2 yards

## Cutting

From Fabric A (CLEL 513 S), cut:

- (2) 8 1/2" x 42" strips; cut (6) 8 1/2" squares

From Fabric B (CLEL 505 S), cut:

- (2) 8 1/2" x 42" strips; cut (6) 8 1/2" squares

From Fabric C (CLEL 504 LS), cut:

- (1) 4 7/8" x 42" strip; cut (6) 4 7/8" squares
- (5) 4 1/2" x 42" strips; cut (12) 4 1/2" x 8 1/2" rectangle and (12) 4 1/2" squares

From Fabric D (CLEL 514 S), cut:

- (2) 4 7/8" x 42" strips; cut (12) 4 7/8" squares
- (3) 4 1/2" x 42" strips; cut (24) 4 1/2" squares

Fabric E (CLEL 512 LS), cut:

- (1) 4 7/8" x 42" strip; cut (6) 4 7/8" squares
- (2) 8 1/2" x 42" strips; cut (12) 4 1/2" x 8 1/2" rectangle
- (2) 4 1/2" x 42" strips; cut (12) 4 1/2" squares

From Fabric F (CLEL 508 LS), cut:

- (6) 2 1/2" x 42" border strips

From Fabric G (CWEA 200 S), cut:

- (6) 4 1/2" x 42" strips; cut (48) 4 1/2" squares

From Fabric H (CWEA 200 K), cut:

- (2) 4 7/8" x 42" strips; cut (12) 4 7/8" squares
- (3) 4 1/2" x 42" strips; cut (24) 4 1/2" squares
- (7) 2 1/2" x 42" binding strips

From Fabric I (ESS2 570 Y), cut:

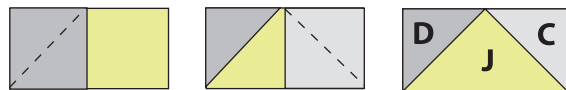
- (2) 4 7/8" x 42" strips; cut (12) 4 7/8" squares
- (3) 4 1/2" x 42" strips; cut (24) 4 1/2" squares

From Fabric J (CWEA 200 Y), cut:

- (3) 8 1/2" x 42" strips; cut (24) 4 1/2" x 8 1/2" rectangles

## Block One Assembly

**1.** Draw a diagonal line from corner to corner on the wrong side of 12 fabric D 4 1/2" squares and fabric C 4 1/2" squares. Place a marked fabric D square on the left end of a fabric J rectangle, right sides together. Sew on the line and trim the excess corner fabric, leaving a 1/4" seam allowance. Press open the resulting triangle. Place a marked fabric C square on the other end of the rectangle. Sew, press, and trim to make a flying-geese unit. Make a total of 12 D/J/C units.

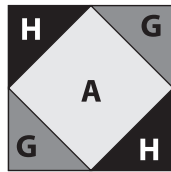


**2.** Repeat step 1, using 12 fabric I 4 1/2" squares, 12 fabric G 4 1/2" squares, and the fabric E rectangles to make 12 I/E/G flying-geese units.

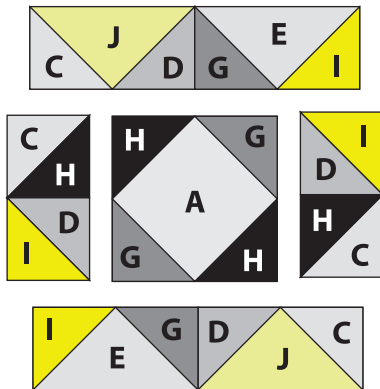
**3.** Draw a diagonal line from corner to corner on the wrong side of each fabric C 4 7/8" square. Place a marked C square on top of a fabric H 4 7/8" square, right sides together. Sew 1/4" from each side of the marked line. Cut the squares apart on the marked line to make two C/H triangle-square units. The units should measure 4 1/2" square. Make a total of 12 C/H units.

**4.** Repeat step 3, using the fabric D 4 7/8" squares and fabric I 4 7/8" squares to make 24 D/I triangle-square units. Set aside 12 of the units for Block Two.

5. Draw a diagonal line from corner to corner on the wrong side of 12 fabric H  $4\frac{1}{2}$ " squares and 12 fabric G  $4\frac{1}{2}$ " squares. Place a marked fabric H square on opposite corners of a fabric A square, right sides together. Sew on the lines and trim the excess corner fabric, leaving a  $\frac{1}{4}$ " seam allowance. Press open the resulting triangles. In the same way, sew marked fabric G squares on the two remaining corners to make a square-in-a-square unit. Make a total of six units.



6. Lay out two D/J/C units, two I/E/G units, two C/H units, two D/I units and one square-in-a-square unit as shown. Join the units into rows and then join the rows to make one of Block One. Repeat to make a total of six blocks.



### Block Two Assembly

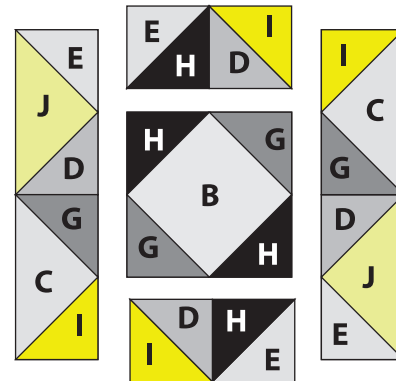
7. Repeat step 1, using the fabric E  $4\frac{1}{2}$ " squares, the remaining fabric D  $4\frac{1}{2}$ " squares, and the remaining fabric J rectangles to make 12 E/J/D flying-geese units.

8. Repeat step 1, using 12 fabric G  $4\frac{1}{2}$ " squares, 12 fabric I  $4\frac{1}{2}$ " squares, and the fabric C rectangles to make 12 G/C/I flying-geese units.

9. Repeat step 3, using the fabric E  $4\frac{7}{8}$ " squares and remaining fabric H  $4\frac{7}{8}$ " squares to make 12 E/H triangle-square units.

10. Repeat step 5, using 12 fabric H  $4\frac{1}{2}$ " squares, 12 fabric G  $4\frac{1}{2}$ " squares, and the fabric B squares to make six square-in-a-square units.

11. Lay out two E/J/D units, two G/C/I units, two E/H units, two D/I units and one square-in-a-square unit to make one of Block Two. Repeat to make a total of six blocks.



### Quilt Top Assembly

12. Lay out the blocks in four rows of three blocks each, alternating and rotating the blocks as shown on the cover. Join the blocks into rows and then join the rows to complete the quilt center. The quilt center should measure  $48\frac{1}{2}$ " x  $64\frac{1}{2}$ ".

13. Join the fabric F strips together end to end. From the pieced strip, cut two  $64\frac{1}{2}$ "-long strips and sew them to opposite sides of the quilt top. From the remaining pieced strip, cut two  $52\frac{1}{2}$ "-long strips and sew them to the top and bottom of the quilt top to complete the border.

14. Layer the quilt top with batting and backing; baste. Quilt as desired. Using the fabric H  $2\frac{1}{2}$ "-wide strips, bind the edges to finish.

# Classical Elements

Fabric Collection by P&B Textiles



CLEL 504 E



CLEL 504 LS



CLEL 505 LS



CLEL 505 S



CLEL 507 E



CLEL 507 LS



CLEL 508 LS



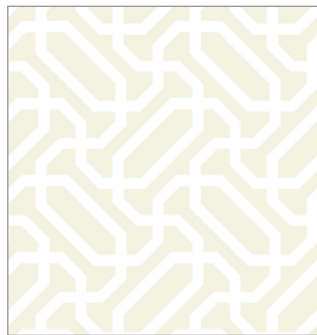
CLEL 508 NE



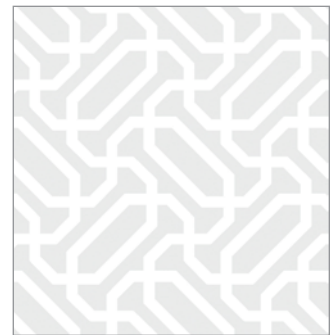
CLEL 509 E



CLEL 509 LS



CLEL 512 E



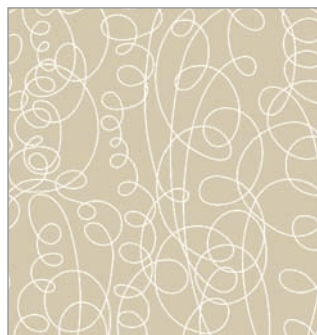
CLEL 512 LS



CLEL 513 NE



CLEL 513 S



CLEL 514 NE



CLEL 514 S



P&B Textiles ♦ [www.pbtex.com](http://www.pbtex.com) ♦ 800-351-9087

45-47 Washington St, Pawtucket, RI 02860 ♦ 237 W. 35th St, 11th floor, New York, NY 10001

△ 100% cotton ♦ Cold wash & dry ♦ 43"/44" ♦ Colors may vary due to printing process

All fabrics shown at 50% scale.