

CANTERBURY

Quilt design by Toby Lischko featuring fabrics by Hoffman California Fabrics

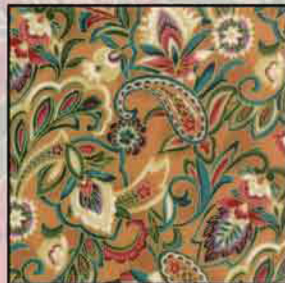
Crimson Colorway



K7184 10G-Crimson/Gold



K7185 10G-Crimson/Gold



K7186 10G-Crimson/Gold



K7187 10G-Crimson/Gold

Free pattern available from www.HoffmanFabrics.com

Quilt Size 75" square

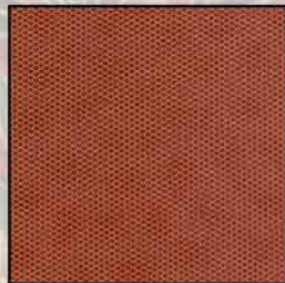
Style	
K7151 21G-Teal/Gold	½ yard
K7187 10G-Crimson/Gold	⅝ yard
K7187 8G-Green/Gold*	1 ⅜ yards
K7151 5G-Red/Gold	⅝ yards
G8555 22G-Ivory/Gold	1 ¼ yards
K7186 10G-Crimson/Gold	⅞ yards
K7184 10G-Crimson/Gold	1 ⅛ yards
K7185 10G-Crimson/Gold	1 ⅜ yards



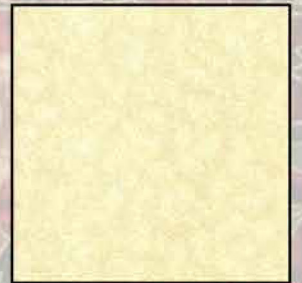
K7187 8G-Green/Gold



K7151 21G-Teal/Gold



K7151 5G-Red/Gold



G8555 22G-Ivory/Gold

*Yardage includes binding.

BACKING: Coordinate of your choice. 4 ¾ yards (1 kit); 57 yards (12 kits)

HOFFMAN FABRICS
CALIFORNIA-INTERNATIONAL

“Canterbury” featuring fabrics by Hoffman California Fabrics

Quilt Design by Toby Lischko

Yardage Chart

Onyx Colorway	
G8555 4G-Black/Gold*	¾ yard
K7187 80G-Taupe/Gold	¾ yard
K7187 213G-Onyx/Gold	1 ¾ yards
K7151 4G-Black/Gold	¾ yard
G8555 3G-White/Gold	1 ¼ yards
K7186 213G-Onyx/Gold	¾ yard
K7184 213G-Onyx/Gold	1 ½ yards
K7185 213G-Onyx/Gold	1 ¾ yards

French Blue Colorway	
J9216 18G-Royal/Gold	½ yard
J7032 19G-Navy/Gold	¾ yard
K7187 19G-Navy/Gold	1 ¾ yards
K7151 19G-Navy/Gold	¾ yards
G8555 3G-White/Gold	1 ¼ yards
K7186 F7G-French Blue/Gold	¾ yard
K7184 F7G-French Blue/Gold	1 ½ yards
K7185 F7G-French Blue/Gold	1 ¾ yards

*Yardage includes binding.

BACKING: Coordinate of your choice. 4 ¾ yards (1kit); 57 yards (12 kits)

Onyx Colorway



K7184 213G-Onyx/Gold



K7185 213G-Onyx/Gold



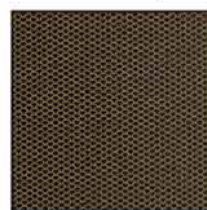
K7186 213G-Onyx/Gold



K7187 80G-Taupe/Gold



K7187 213G-Onyx/Gold



K7151 4G-Black/Gold



G8555 3G-White/Gold



G8555 4G-Black/Gold

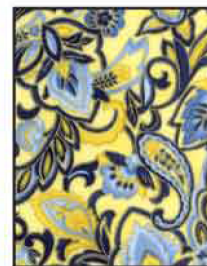
French Blue Colorway



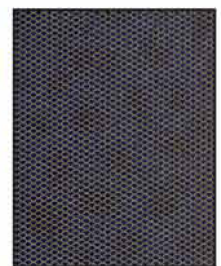
K7184 F7G-F. Blue/Gold



K7185 F7G-F. Blue/Gold



K7186 F7G-F. Blue/Gold



K7151 19G-Navy/Gold



K7187 19G-Navy/Gold



J9216 18G-Royal/Gold



J7032 19G-Navy/Gold



G8555 3G-White/Gold

View swatches and download quilt patterns at www.hoffmanfabrics.com

Canterbury

Quilt size:: 75" x 75"

Designed by Toby Lischko
Using EQ7

Block size:: 12"

Hoffman Canterbury Collection

FABRIC REQUIREMENTS based on 42" wide fabric

Fabric	Blue Variation	Yardage	Used in
1	J9216 18G-Royal Gold	1/2 yard	Block A
2	J7032 19G Navy Gold	2/3 yard	Block A and Border 1
3	K7187 19G Navy Gold	1-1/2 yards	Block B, Border 3, Cornerstones, and Binding
4	K7159 19 G Navy Gold	2/3 yard	Sash
5	G8555 3G White Gold	1-3/8 yards	Blocks A and B
6	K7186 F7G French Blue Gold	1 yard	Block A and Border 2
7	K7184 F7G French Blue Gold	1-3/8 yards	Block B
8	K7185 F7G French Blue Gold	1-1/2 yards	Border 4

Fabric	Black Variation	Yardage	Used in
1	G8555 4G Black Gold	3/4 yard	Block A and Border 1
2	K7182 80G Taupe Gold	1/2 yard	Block A
3	K7187 213G Onyx Gold	1-1/2 yards	Block B, Border 3, Cornerstones, and Binding
4	K71591 4G Black Gold	2/3 yard	Sash
5	G8555 3G White Gold	1-3/8 yards	Blocks A and B
6	K7186 213G Onyx Gold	1 yard	Block A and Border 2
7	K7184 213G Onyx Gold	1-3/8 yards	Block B
8	K7185 213G Onyx Gold	1-1/2 yards	Border 4

Fabric	Red Variation	Yardage	Used in
1	K7156 21G Teal Gold	1/2 yard	Block A
2	K7187 10G Crimson Gold	2/3 yard	Block A and Border 1
3	K7187 8G Green Gold	1-1/2 yards	Block B, Border 3, Cornerstones, and Binding
4	K7151 5G Red Gold	2/3 yard	Sash
5	G8555 22G Ivory Gold	1-3/8 yards	Blocks A and B
6	K7186 10G Crimson Gold	1 yard	Block A and Border 2
7	K7184 10G Crimson Gold	1-3/8 yards	Block B
8	K7185 10G Crimson Gold	1-1/2 yards	Border 4

ALL QUILTS : Backing 4-1/2 yards
Batting 82" x 82"

*An accurate 1/4" is essential for the piecing of this quilt.

*Be careful with bias edges. Pin carefully and sew without stretching or pulling the fabric. Allow the sewing machine to do the work.

Cutting instructions

Based on 42" wide fabric

Fabric 1:

Cut **five** 2-1/2" x WOF; sub-cut into (**72**) 2-1/2" squares.

Cut **six** 1-1/2" x WOF. (**Black** variation only)

Fabric 2:

Cut **two** 5-1/4" x WOF; sub-cut into **nine** 5-1/4" squares, then cut twice diagonally into (**36**) quarter square triangles (**QST**).

Cut **five** 1-1/2" x WOF. (**Red** and **blue** variation only)

Fabric 3:

Cut **three** 4-7/8" x WOF; sub-cut into (**18**) 4-7/8" squares, then cut once into (**36**) half-square triangles (**HST**).

Cut **eight** 1-1/2" x WOF; sub-cut into (**24**) 1-1/2" squares. Leave remaining strips for Border 3.

Cut **eight** 2-1/4" x WOF for binding.

Fabric 4:

Cut **thirteen** 1-1/2" x WOF; sub-cut into (**36**) 1-1/2" x 12-1/2".

Fabric 5:

Cut **two** 5-1/4" x WOF; sub-cut into **nine** 5-1/4" squares, then cut twice diagonally into (**36**) QST.

Cut **one** 5-1/8" x WOF; sub-cut into **six** 5-1/8" squares, then cut twice diagonally into (**24**) QST.

Cut **one** 4-7/8" x WOF; sub-cut into **four** 4-7/8" squares, then cut once diagonally into **eight** HST.

Cut **two** 4-1/2" x WOF; sub-cut into (**16**) 4-1/2" squares.

Cut **five** 2-1/2" x WOF; sub-cut into (**72**) 2-1/2" squares.

Fabric 6:

Cut **one** 4-1/2" x WOF; sub-cut into **nine** 4-1/2" squares.

Cut **seven** 3-1/2" x WOF.

Fabric 7:

Cut **four** 12-1/2" squares.

Cut **eight** 6-1/8" x 12" rectangles.

Cut **four** 6-1/8" squares.

Fabric 8:

Cut **eight** 5-1/2" strips x WOF

Block Construction

Block A Make 9

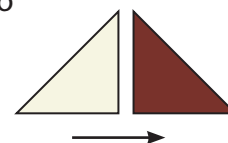
1. Sew a 2-1/2" **Fabric 1** square to a 2-1/2" **Fabric 5** square. Press to the dark. **Make 72.**



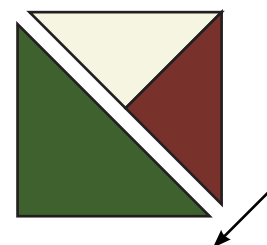
2. Sew two sections together to create a four-patch. **Make 36.** Press in either direction.



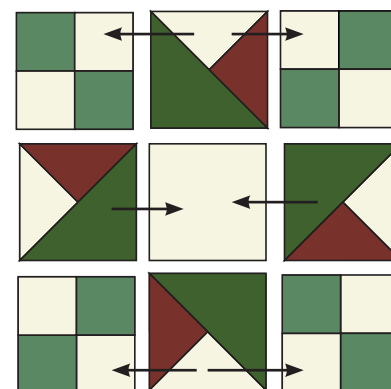
3. Sew a 5-1/4" **Fabric 5** QST to a 5-1/4" **Fabric 2** QST, placing **Fabric 2** on the right side. Press to the dark. **Make 36.**



4. Sew the pieced QSTs from step 3 to a 4-7/8" **Fabric 3** HST. Press to large triangle. **Make 36.**



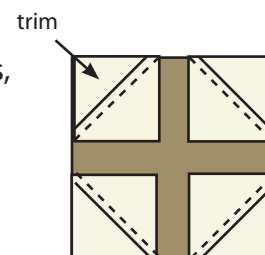
5. Sew **four** four-patches, **four** sections from step 4, and **one** 4-1/2" **Fabric 6** square together to create a nine-patch. **Make 9.** Press in the direction of the arrows.



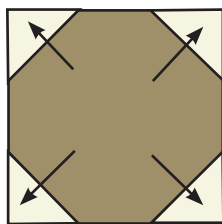
Block B Make 4

6. Draw a diagonal line on the backs of the 4-1/2" **Fabric 5** squares.

7. Place the 4-1/2" squares, right sides together, on each corner of a 12-1/2" **Fabric 7** square.

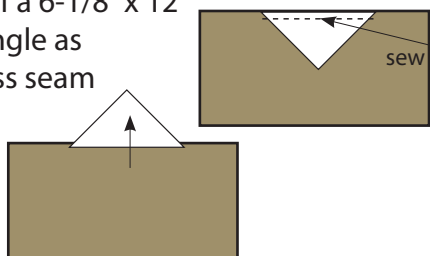


8. Sew along the drawn line and trim seam to 1/4". Press to triangle. **Make 4.**

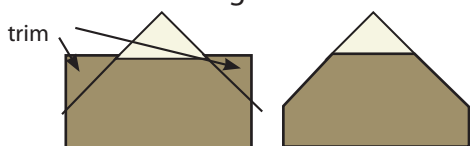


Block B Setting Triangles Make 8

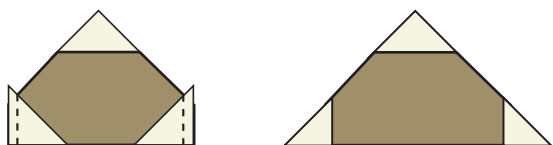
9. Match centers of the 4-7/8" **Fabric 5 HST** and the long side of a 6-1/8" x 12" **Fabric 7** rectangle as illustrated. Press seam to triangle.



10. Using a square ruler, align one corner of the ruler on the corner of the triangle and trim off each side.

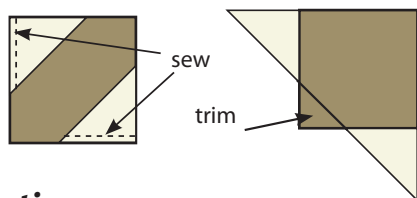


11. Sew a 5-1/8" **Fabric 5 QST** to each small end of the rectangle. Press to triangles. **Make 8.**



Block B Corner triangles Make 4

12. Sew a 5-1/8" **Fabric 5 QST** to two sides of a 6-1/8" **Fabric 7** square as illustrated. Press to triangles. Using a ruler, line the edge of the ruler along the edge of the triangles and trim one corner off. **Make 4.**



Quilt construction

13. Lay out the A and B blocks, pieced setting triangles, pieced corners, 1-1/2" **Fabric 3** squares, and the 1-1/2" x 12-1/2" **Fabric 4** sash. All sash rows start and end with a 1-1/2" square. (See

illustration on the following page.)

14. Sew in diagonal rows, sewing sash rows then block rows, then sewing rows together. Press sash rows to the sash strip and block rows to the sash strip. Press the quilt rows to the sash strip. The outside ends of the cornerstones will extend slightly beyond the edge of the quilt top. Trim the outside cornerstones to be even with the quilt edge. (There should be 1/4" seam allowance from point of intersection.)

Border construction

15. Sew the **six** 1-1/2" **Fabric 2** (**Fabric 1** for **Black** variation) strips short ends together with diagonal seams. Press seams open.

16. Measure through vertical center (top to bottom) of the quilt and cut two strips this length. Matching center and ends, pin and sew to sides. Press to border.

17. Measure through the horizontal center (side to side) of the quilt and cut two strips to this width. Matching center and ends, pin and sew to top and bottom. Press to border.

18. Repeat steps 15, 16, and 17 with the **seven** 3-1/2" **Fabric 6** strips and **seven** 1-1/2" **Fabric 3** strips.

19. Sew the **eight** 5-1/2" **Fabric 8** strips short ends together with straight seams. Press seams open. Repeat steps 16 and 17.

Layer pieced backing, quilt and batting. Quilt as desired.

Sew the **eight** 2-1/4" **Fabric 3** strips short ends together with diagonal seams. Sew to top of quilt with a 1/4" seam, mitering corners. Turn to back of quilt and hand stitch to back. Put a label on the back and ENJOY!

Quilt layout

