

Celebration Tree Skirt

Featuring the *Celebration by Mary Capan* collection by Hoffman California Fabrics



Tree skirt measures 51" wide.
An original design
by Linda Ambrosini.

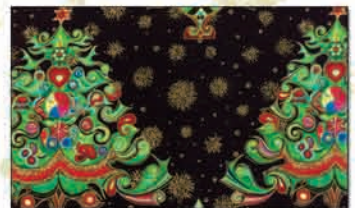
Will be available to download
from Free Quilt Patterns page
at www.hoffmanfabrics.com.



K7155 128G-Midnight Gold



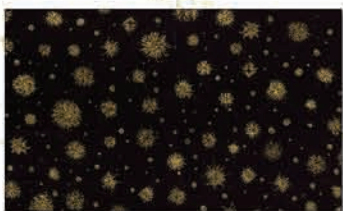
K7155 132G-Opal Gold



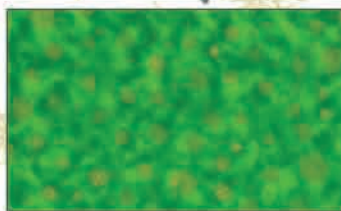
K7152 128G-Midnight Gold



K7152 166G-Evergreen Gold



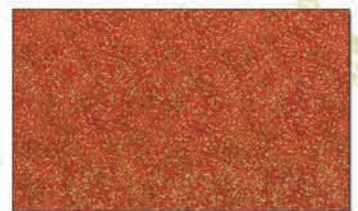
K7154 4G-Black Gold



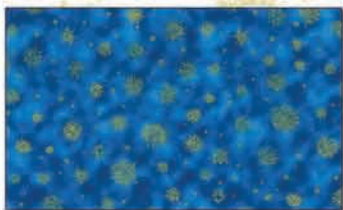
K7154 354G-Kelly Gold



K7153 128G-Midnight Gold



J7032 5G-Red Gold



K7154 230G-Sapphire Gold



K7154 3G-White Gold

HOFFMAN FABRICS
CALIFORNIA-INTERNATIONAL

View swatches and download this free
pattern at www.hoffmanfabrics.com.

Hexagon Christmas Tree Skirt

By Linda Ambrosini

Finished size 48" Hexagon

This quilted tree skirt is just a very large hexagon, using strip piecing of the "Celebration" fabric collection by Hoffman CA Fabrics.

Supplies: 60 degree triangle ruler (Creative Grids)
Freezer paper
Large cutting mat (24 x 36")

Large Christmas tree row fabric $\frac{3}{4}$ each black and white, so 2 rows can be fussy cut.

Focal fabric angels and large overall print $\frac{1}{3}$ yd each.

5 colored fabrics $\frac{1}{4}$ yd each

Binding I used green colored fabric $\frac{3}{4}$ yd

Backing fabric 3 yds.

Wedge Template:

Make a large triangle template by simply enlarging the size of your triangle ruler onto freezer paper. Start by taping sections of freezer paper together to achieve a 25 x 30 inch rectangle (this is slightly oversized). Perpendicular to the 30" side, draw a vertical line marking the center. Align the 30" side to the zero line on your cutting mat as well as the drawn center line with the 18 inch mat line. Cut the freezer paper to 24" in height. While the freezer paper is still aligned to the zero line on your mat, align the center line of your 60 degree ruler at the top point to the edge of your freezer paper. Draw lines along the two sides of your triangle ruler. Extend these drawn lines all the way to the bottom of your 24" piece of freezer paper. Cut out the large triangle wedge shape to use as your template.

Construct 6 Wedges:

Cut your fabrics into strips varying from 1 $\frac{1}{2}$ to 8 $\frac{1}{2}$ inches. Cut 2 or 3 strips of each fabric to use at your discretion. The base of the triangle wedges will be the outside of your tree skirt, so use the fabrics

there that you wish to emphasize. Make one wedge at a time varying fabric usage. Using your freezer paper template, measure the length of fabric needed and cut from your strips (I started at the base). Fold the cut fabric strip in half and gently press in a center line. Yes, each fabric strip will extend beyond the edges of the template, but these will be cut away. When sewing strips together align the center lines, in some cases you may want to center the fabric pattern to this center line. Create a strip set measuring a minimum 24 inches in height.

To cut finished wedge shapes, align the base of the fabric strip set to the zero line on your mat and then align the centerline of your large triangle template to the centerline of your strip set. Trim the strip set to the edges of your large triangle template. Make 6 wedges.

Constructing the Tree Skirt:

Lay out your 6 wedges into a hexagon shape, center points all facing to the middle. Stitch into two groups of three wedges, and then stitch the two groups together matching the center point. The center point does not need to match perfectly as it will be cut away after quilting to make the opening for you tree skirt.

Baste and quilt, the hexagon shape to a rectangle of backing and batting. Trim the outer edges to the hexagon shape after quilting.

Draw a 6 inch diameter circle in the middle of the quilted hexagon. Choose the wedge that you wish to be the back of the tree skirt and draw a line down the center of that wedge. Cut along the center and circle lines you have drawn.

Bind the edges. The binding used for the center circle of the tree skirt will need to be cut on the bias. Cut enough bias binding to cover both the circle and extensions for ties, 50 inches should be enough. The remainder of the binding can be cut on the straight of grain. First bind and finish the length along your back wedge. Then add the center's bias binding and tie extensions, and finally bind the outside of the hexagon also adding tie extensions. The tie extensions need to be approx. 12 inches long. To finish the tie extensions, press under the raw edge the amount of your seam allowance, fold the binding's folded edge to match, and machine stitch together.