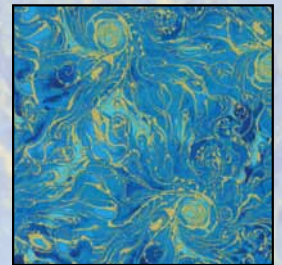


DREAMS OF THE AGES

Quilt design by Larene Smith featuring fabrics from the "Celestial Dreams" collection by Hoffman California Fabrics



K7220 549G-Celestials/Gold



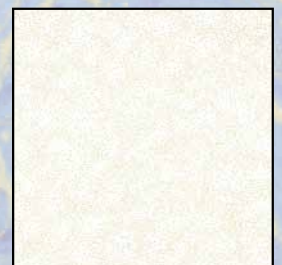
K7221 536G-Aquarius/Gold



J7032 33G-Cream/Gold



J7032 47G-Gold/Gold



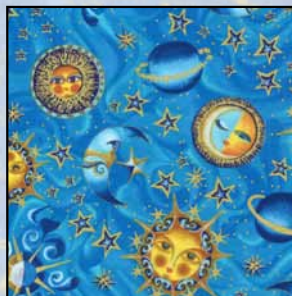
G8555 3G-White/Gold

Free pattern available from www.hoffmanfabrics.com

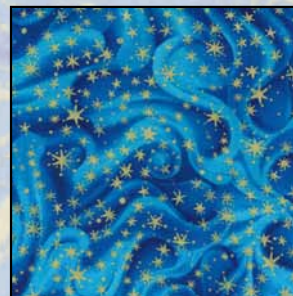
Quilt Size 40" x 40"



K7218 536G-Aquarius/Gold



K7219 536G-Aquarius/Gold



K7220 536G-Aquarius/Gold

HOFFMAN FABRICS
CALIFORNIA-INTERNATIONAL

“Dreams of the Ages” featuring fabrics by Hoffman California Fabrics

Yardage Chart

Aquarius/Gold Colorway	Garnet/Gold Colorway	Gold/Gold Colorway	
K7218 Aquarius/Gold #536G	K7218 Garnet/Gold #231G	K7218 Celestials/Gold #549G	¾ yard
K7220 Celestials/Gold #549G	K7220 Onyx/Gold #213G	K7220 Celestials/Gold #549G	¾ yard
K7220 Aquarius/Gold #536G	G8555 Scarlet/Gold #78G	J7032 Navy/Gold #19G	¼ yard
J7032 Cream/Gold #33G	G8555 Black/Gold #4G	J7032 Cream/Gold #33G	¼ yard
G8555 White/Gold #3G	G8555 Cream/Gold #33G	G8555 Ivory/Gold #22G	½ yard
J7032 Gold/Gold #47G*	J7032 Red/Gold #5G*	J7032 Gold/Gold #47G*	⅝ yard
K7221 Aquarius/Gold #536G	K7221 Onyx/Gold #213G	K7221 Celestials/Gold #549G	¾ yards
K7219 Aquarius/Gold #536G	K7219 Garnet/Gold #231G	K7219 Celestials/Gold #549G	½ yard

Note: These are estimated yardages. Final yardages will be on pattern.

*Yardage includes binding.

BACKING: Coordinate of your choice. 2 ½ yards (1kit); 30 yards (12 kits)

Garnet/Gold



K7218 231G-Garnet/Gold



K7219 231G-Garnet/Gold



K7220 213G-Onyx/Gold



G8555 78G-Scarlet/Gold



J7032 5G-Red/Gold



K7221 213G-Onyx/Gold



G8555 4G-Black/Gold



G8555 33G-Cream/Gold

Gold/Gold



K7218 549G-Celestials/Gold



K7219 549G-Celestials/Gold



K7220 549G-Celestials/Gold



J7032 19G-Navy/Gold



J7032 47G-Gold/Gold



K7221 549G-Celestials/Gold



J7032 33G-Cream/Gold



G8555 22G-Ivory/Gold

View swatches and download quilt patterns at www.hoffmanfabrics.com

Dreams of the Ages

Hoffman California Fabrics – Celestial Dreams Collection

Finished Wall Hanging Size: 40" x 40"

© 2013 – Copyright – All Rights Reserved

Design and Instruction by Larene Smith

The Quilted Button, Mission Viejo, CA



Garnet /Gold



Celestials/Gold



Aquarius/Gold

General Information

- ☞ All seams are sewn with a 1/4" seam allowance.
- ☞ Pre-wash and press with spray starch before cutting.
- ☞ Press seams open as much as possible to decrease bulk.
- ☞ Label fabric as cut for less confusion.
- ☞ The borders are labeled from the INSIDE out.
- ☞ Center when sewn will finish at 16" square. The Outer Blocks when sewn will finish at 6" square.

Fabric Requirements

		<u>Garnet</u>	<u>Gold</u>	<u>Aquarius</u>
3/4 Yard	Fabric A	K7218-231G Garnet Gold	K7218-549G Celestials Gold	K7218-536G Aquarius Gold
3/4 Yard	Fabric B	K7220-213G Onyx Gold	K7220-549G Celestials Gold	K7220-549G Celestials Gold
1/4 Yard	Fabric C	G8555-78G Scarlet Gold	J7032-19G Navy Gold	K7220-536G Aquarius Gold
1/4 Yard	Fabric D	G8555-4G Black Gold	J7032-33G Cream Gold	J7032-33G Cream Gold
1/2 Yard	Fabric E	G8555-33G Cream Gold	G8555-22G Ivory Gold	G8555-3G White Gold
5/8 Yards	Fabric F **	J7032-5G Red Gold	J7032-47G Gold Gold	J7032-47G Gold Gold
3/8 Yard	Fabric G	K7221-213G Onyx Gold	K7221-549G Celestials Gold	K7221-536G Aquarius Gold
1/2 Yard	Fabric H	K7219-231G Garnet Gold	K7219-549G Celestials Gold	K7219-536G Aquarius Gold

** Fabric F Includes Binding

2-1/2 Yards Backing 44" x 44" Batting 3 Yards – Double Sided Fusible Web for Applique

Special Notions

6 1/2" x 24-1/2" Ruler with 45° Markings, Pencil for Tracing, Rotary Cutter, Cutting Mat, Scissors, Straight Pins, Thread to match fabric, Iron and Pressing Mat, Sewing Machine in good working condition.

Step 1 – Preparing the Fabric

1. Fabric A – Cut as follows:

- a. Cut (1) strip at 3" x WOF (Large Template – Make 2).
- b. Cut (1) strip at 2-1/2" x WOF (Medium Template – Make 3).
- c. Cut (1) strip at 2-1/2" x WOF (Small Template – Make 4).
- d. The balance of the fabric will be used to FUSSY CUT (10) at 4-1/2" squares and (1) at 6-1/2" square for the appliquéed circles.

2. Fabric B – Cut as follows:
 - a. Cut (1) strip at 3” x WOF (Large Template – Make 2).
 - b. Cut (1) strip at 2-1/2” x WOF (Medium Template – Make 3).
 - c. Cut (1) strip at 2-1/2” x WOF (Small Template – Make 4).
 - d. Cut (4) strips at 2-1/4” x WOF – BORDER 5.
 - e. Cut (1) strip at 7-1/4” x WOF – Sub-cut into (5) 7-1/4” squares then cross-cut TWICE to yield (20) triangles.
3. Fabric C – Cut (1) strip at 7-1/4” x WOF – Sub-cut into (5) 7-1/4” squares then cross-cut TWICE to yield (20) triangles.
4. Fabric D – Cut (1) strip at 7-1/4” x WOF – Sub-cut into (5) 7-1/4” squares then cross-cut TWICE to yield (20) triangles.
5. Fabric E – Cut (1) strip at 16-1/2” x WOF – Sub-cut into (1) 16-1/2” square and from the balance cut (5) 7-1/4” squares – cross-cut TWICE to yield (20) triangles.
6. Fabric F – Cut as follows:
 - a. Cut (2) strips at 1-1/2” x WOF – BORDER 1.
 - b. Cut (4) strips at 1-1/2” x WOF – BORDER 3.
 - c. Cut (5) strips at 2-1/2” x WOF – BINDING.
7. Fabric G – Cut (4) strips at 2-1/2” x WOF – BORDER 2.
8. Fabric H – FUSSY CUT (10) 4-1/2” squares for the appliquéd circles.

NOTE: DO NOT CUT THE CIRCLES until the Double Sided Web has been fused to the WRONG side of the fabric.

Step 2 – Sewing Block A – Background (Triangles)

NOTE: Refer to Example A when sewing this block to ensure the placement of fabric.

9. Sew (1) Fabric E triangle to (1) Fabric D triangle at the short edge with the FABRIC E towards the LEFT SIDE and FABRIC D towards the TOP to make HALF of the QUARTER SQUARE TRIANGLE (QST) – Make (20).
10. Sew (1) Fabric B to (1) Fabric G triangle at the sort edge with FABRIC B towards the BOTTOM and FABRIC G towards the RIGHT SIDE to make HALF of the “QST” – Make (20).
11. Sew both HALVES together to finish the “QST” at 6-1/2” square – Make (20).

Example A
Quarter Square Triangle
Make 20



Example B
Block A with Circle



Step 3 – Sewing on the Circles to Block A

12. Trace the (20) 4” Circles and (1) 6” Circle onto the Double Sided Web.

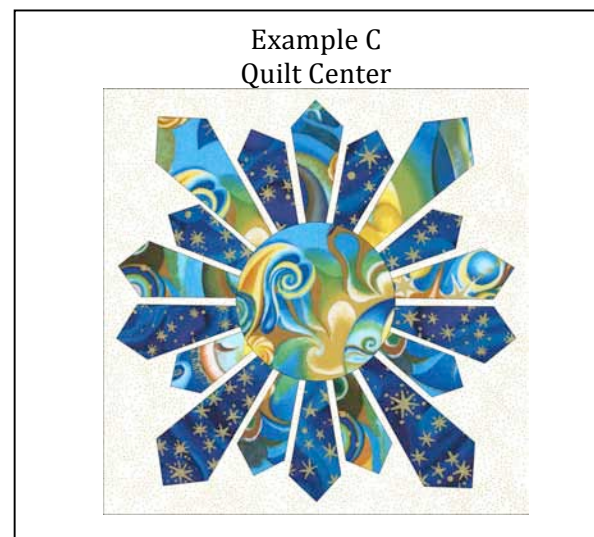
- Cut out the 4" Circles at least 1/8" past the drawn line and fuse to the WRONG side of the 4-1/2" square of Fabric A and H.

NOTE: When fusing Fabric A to the "QST" refer to the cover picture as the "QST" rotates as Fabric A is directional.

- Cut on the drawn line then fuse the 4" circle to Block A "QST". Stitch around the circle to secure – Make (20) as shown in Example B.
- Cut out the 6" Circle as done for the 4" Circle using Fabric A and set aside for use for the center.
- Set aside Block A for use later.

Step 4 – Sewing the Center of the Quilt

- Trace (4) Large, (6) Medium, and (8) Small Wedges using templates provided onto the Double Sided Web.
- Cut out the templates as done for the circles then fuse to the appropriate fabric as indicated during the CUTTING in Step 1.
- Using Fabric E 16-1/2" square place the 6" Circle from Step 3 in the center and pin the center of the circle for temporary security.
- Layer the wedges onto the 16-1/2" square and sliding the tips of the wedges under the circle as shown in Example C.
- Once satisfied with the placement fuse to secure and stitch around all raw edges to give added security.



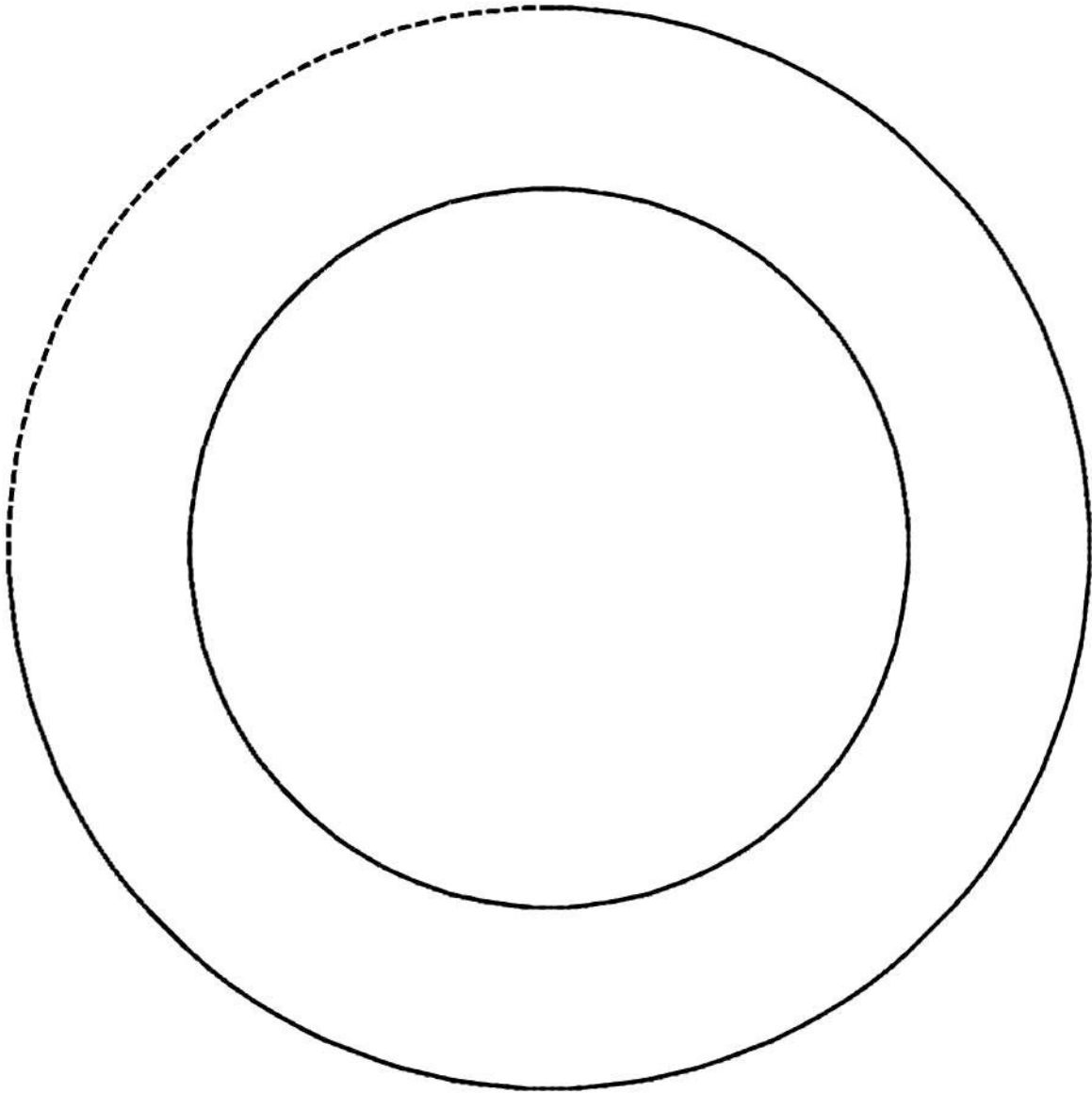
Step 5 – Sewing the Quilt Top

- Border 1 ---- Sew (1) Fabric F 1-1/2" x 16-1/2" rectangle to the top and bottom of the CENTER then sew (1) 1-1/2" x 18-1/2" rectangle to both sides to measure 18-1/2" square.
- Border 2 ---- Sew (1) Fabric G 2-1/2" x 18-1/2" rectangle to the top and bottom then sew (1) 2-1/2" x 22-1/2" rectangle to both sides to measure 22-1/2" square.
- Border 3 ---- Sew (1) Fabric F 1-1/2" x 22-1/2" rectangle to the top and bottom then sew (1) 1-1/2" x 24-1/2" rectangle to both sides to measure 24-1/2" square.
- Border 4 ---- Sew (4) of Block A to each side then sew (6) of Block A to the top and bottom to measure 36-1/2" square. *REFER TO THE COVER PICTURE FOR PLACEMENT OF BLOCK A.*
 - Sew (4) of Block A together to measure 6-1/2" x 24-1/2" – Make (2) for the SIDES.
 - Sew (6) of Block A together to measure 6-1/2" x 36-1/2" – Make (2) for the TOP and BOTTOM.
- Border 5 ---- Sew (1) Fabric B 2-1/4" x 36-1/2" rectangle to the top and bottom then sew (1) 2-1/4" x 40" to both sides to measure 40" square.

Step 6 – Finishing the Quilt

- Layer the backing, batting, and quilt top and quilt as desired.
- Using the 2-1/2" strips of Fabric F sew on the binding to finish the quilt.

Trace Circles onto the Double Sided Web
Center Circle is 4"
Outer Circle is 6"



Trace WEDGE Templates onto the Double Sided Web

