

# URBAN CLASSICS

Fabric Collection by **Nancy Mahoney**



# URBAN CLASSICS

**Chain Link** quilt by Heidi Pridemore featuring the *Urban Classics* collection by Nancy Mahoney for P&B Textiles

Quilt Size: 43" x 55"

## Yardage

Fabric A	UCLA 981 B	3/4 yard
Fabric B	UCLA 982 G	3/8 yard
Fabric C	UCLA 983 T	3/8 yard
Fabric D	UCLA 984 B	5/8 yard
Fabric E	UCLA 985 T	3/8 yard
Fabric F	UCLA 986 B	7/8 yard
Fabric G	UCLA 988 T	3/8 yard
Fabric H	CSNE W (solid white)	3/4 yard
Backing	any UCLA fabric	3 yards

## Cutting

*All strips are cut across the width of the fabric.*

### From fabric A (UCLA 981 B), cut:

- (5) 4" x 42" border strips. Piece the strips; cut (2) 4" x 48 1/2" strips and (2) 4" x 43 1/2" strips.

### From fabric B (UCLA 982 G), cut:

- (1) 2 1/2" x 42" strip; cut into (16) 2 1/2" squares
- (1) 6 1/2" x 42" strip; cut into (16) 2 1/2" x 6 1/2" rectangles

### From fabric C (UCLA 983 T), cut:

- (1) 2 1/2" x 42" strip; cut into (16) 2 1/2" squares
- (1) 6 1/2" x 42" strip; cut into (16) 2 1/2" x 6 1/2" rectangles

### From fabric D (UCLA 984 B), cut:

- (2) 2 1/2" x 42" strips; cut into (20) 2 1/2" squares
- (2) 6 1/2" x 42" strips; cut into (20) 2 1/2" x 6 1/2" rectangles

### From fabric E (UCLA 985 T), cut:

- (1) 2 1/2" x 42" strip; cut into (12) 2 1/2" squares
- (1) 6 1/2" x 42" strip; cut into (12) 2 1/2" x 6 1/2" rectangles

### From fabric F (UCLA 986 B), cut:

- (1) 2 1/2" x 42" strip; cut into (16) 2 1/2" squares
- (1) 6 1/2" x 42" strip; cut into (16) 2 1/2" x 6 1/2" rectangles
- (6) 2 1/4" x 42" binding strips

### From fabric G (UCLA 988 T), cut:

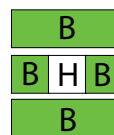
- (1) 2 1/2" x 42" strip; cut into (16) 2 1/2" squares
- (1) 6 1/2" x 42" strip; cut into (16) 2 1/2" x 6 1/2" rectangles

### From fabric H (CSNE W), cut:

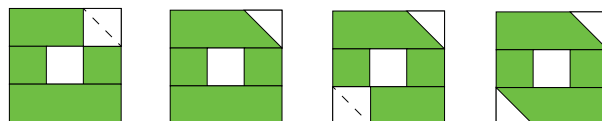
- (9) 2 1/2" x 42" strips; cut into (144) 2 1/2" squares

## Block Assembly

**1.** Sew fabric B squares to opposite sides of a fabric H square. Then sew fabric B rectangles to the top and bottom of the pieced rectangle to make a center unit. Make a total of eight units.



**2.** Draw a diagonal line from corner to corner on the wrong side of 16 fabric H squares. Place a marked square on the upper-right corner of one center unit, right sides together. Sew along the line. Trim the excess corner fabric, leaving a 1/4" seam allowance. Press open the resulting triangle. Place a marked square on the opposite corner of the unit. Sew, trim, and press in the same manner as before to complete the block. Make a total of 8 fabric B blocks.

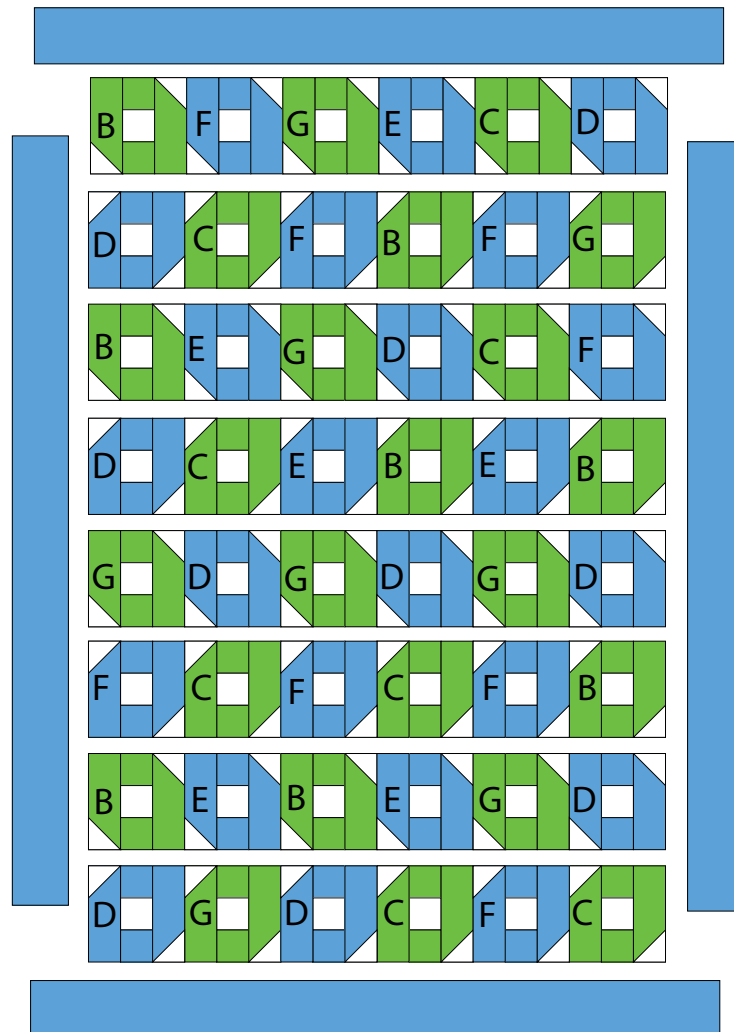


3. Repeat steps 1 and 2, using 24 fabric H squares and the fabric C squares and rectangles to make a total of 8 fabric C blocks.
4. Repeat steps 1 and 2, using 30 fabric H squares and the fabric D squares and rectangles to make a total of 10 fabric D blocks.
5. Repeat steps 1 and 2, using 18 fabric H squares and the fabric E squares and rectangles to make a total of 6 fabric E blocks.
6. Repeat steps 1 and 2, using 24 fabric H squares and the fabric F squares and rectangles to make a total of 8 fabric F blocks.
7. Repeat steps 1 and 2, using 24 fabric H squares and the fabric G squares and rectangles to make a total of 8 fabric G blocks.

## Quilt Top Assembly

*Refer to the quilt photo as needed for placement guidance.*

8. Lay out the blocks in eight rows of six blocks each, rotating the blocks in every other row as shown in the diagram. Join the blocks into rows and then join the rows.
9. Sew the fabric A  $48\frac{1}{2}$ "-long strips to opposite sides of the quilt top. Sew fabric A  $43\frac{1}{2}$ "-long strips to the top and bottom of the quilt top to complete the outer border.
10. Layer the quilt top with batting and backing; baste. Quilt as desired. Using the fabric F  $2\frac{1}{4}$ "-wide binding strips, bind the edges to finish.



Quilt Layout Diagram

# URBAN CLASSICS

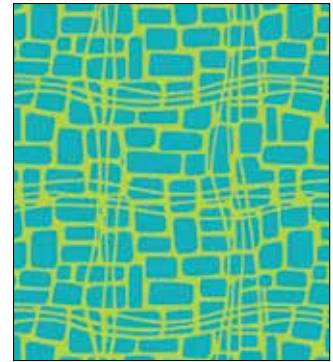
Fabric Collection by **Nancy Mahoney**



UCLA 981 B



UCLA 982 G



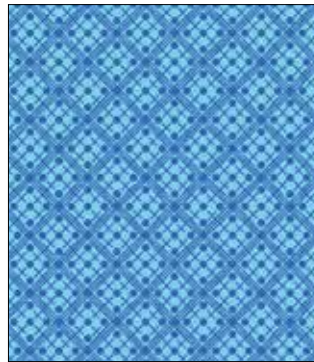
UCLA 983 T



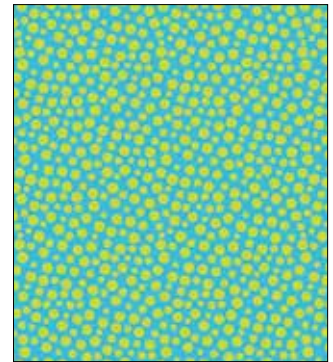
UCLA 984 B



UCLA 985 T



UCLA 986 B



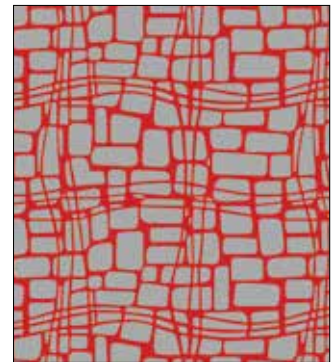
UCLA 988 T



UCLA 981 P



UCLA 982 S



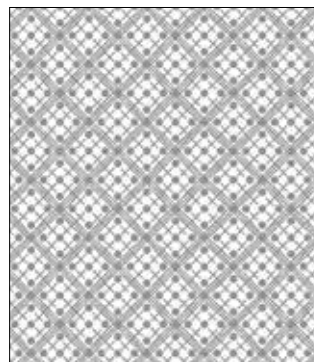
UCLA 983 S



UCLA 984 R



UCLA 985 S



UCLA 986 S



UCLA 988 P



**P&B Textiles** ♦ [www.pbtex.com](http://www.pbtex.com) ♦ 800-351-9087

45-47 Washington St., Pawtucket, RI 02860 ♦ 237 W. 35th St., 11th floor, New York, NY 10001

▲ 100% cotton ♦ Cold wash & dry ♦ 43" / 44" ♦ Colors may vary due to printing process

All fabrics shown at 50% scale except where indicated otherwise.