

# Daydreams

Fabric Collection by **P&B Textiles**

FREE pattern  
available on  
our website,  
[pbtex.com](http://pbtex.com)



*Changing Seasons*  
quilt by  
Heidi Pridemore

Size: 56" x 72"



[pbtex.com](http://pbtex.com)

# Changing Seasons

Quilt by Heidi Pridemore using the *Daydreams* fabric collection by P&B Textiles

Quilt Size: 56" x 72" • Small Blocks: 12" square • Center Block: 18" square with 3" borders

## Yardage

Fabric A	<b>DAYD 316 LB</b> (Teal Trees)	1/2 yard
Fabric B	<b>DAYD 317 G</b> (Green Tonal Print)	1/2 yard
Fabric C	<b>DAYD 316 LO</b> (Peach Trees)	1/2 yard
Fabric D	<b>DAYD 319 P</b> (Pink Diamonds)	1/4 yard
Fabric E	<b>DAYD 316 YG</b> (Lime Trees)	1/4 yard
Fabric F	<b>DAYD 315 WB</b> (White Print)	5/8 yard
Fabric G	<b>CWEA 200 O</b> (Orange Weave)	1/2 yard
Fabric H	<b>LOVE 499 LZ</b> (Brown Scratch)	1/4 yard
Fabric I	<b>CWEA 200 YG</b> (Lime Weave)	1/4 yard
Fabric J	<b>CWEA 200 X</b> (Yellow Weave)	1/4 yard
Fabric K	<b>LOVE 499 R</b> (Red Scratch)	1/4 yard
Fabric L	<b>LOVE 499 P</b> (Pink Scratch)	1/4 yard
Fabric M	<b>CWEA 200 W</b> (Beige Weave)	1 3/4 yards
Fabric N	<b>CWEA 200 LT</b> (Blue Weave)	7/8 yard
Fabric O	<b>CWEA 200 N</b> (Navy Weave)	7/8 yard
Fabric P	<b>DAYD 317 O</b> (Orange Tonal Print)	1/3 yard
Backing	Any <i>Daydreams</i> fabric	3 3/4 yards

## Cutting

### From fabric A (Teal Trees), cut:

- (1) 7 1/4" square; cut the square into quarters diagonally to make 4 triangles (2 are extra)
- (1) 6 7/8" square; cut the square in half diagonally to make 2 triangles
- (2) 5 1/4" squares; cut the squares into quarters diagonally to make 8 triangles
- (4) 4 7/8" squares; cut the squares in half diagonally to make 8 triangles

### From fabric B (Green Tonal Print), cut:

- (1) 7 1/4" square; cut the square into quarters diagonally to make 4 triangles (2 are extra)
- (1) 6 7/8" square; cut the square in half diagonally to make 2 triangles
- (4) 5 1/4" squares; cut the squares into quarters diagonally to make 16 triangles
- (8) 4 7/8" squares; cut the squares in half diagonally to make 16 triangles

### From fabric C (Peach Trees), cut:

- (1) 7 1/4" square; cut the square into quarters diagonally to make 4 triangles (2 are extra)
- (1) 6 7/8" square; cut the square in half diagonally to make 2 triangles
- (2) 5 1/4" squares; cut the squares into quarters diagonally to make 8 triangles
- (4) 4 7/8" squares; cut the squares in half diagonally to make 8 triangles

### From fabric D (Pink Diamonds), fabric E (Lime Trees), fabric H (Brown Scratch), fabric I (Lime Weave), fabric J (Yellow Weave), fabric K (Red Scratch), fabric L (Pink Scratch), cut:

- (2) 5 1/4" squares; cut the squares into quarters diagonally to make 8 triangles
- (4) 4 7/8" squares; cut the squares in half diagonally to make 8 triangles

### From fabric F (White Print), cut:

- (3) 6 1/2" x 42" strips

### From fabric G (Orange Weave), cut:

- (6) 1 1/2" x 42" strips
- (2) 5 1/4" squares; cut the squares into quarters diagonally to make 8 triangles
- (4) 4 7/8" squares; cut the squares in half diagonally to make 8 triangles

**From fabric M (Beige Weave), cut:**

- (1) 7 1/4" square; cut the square into quarters diagonally to make 4 triangles
- (2) 6 7/8" squares; cut the squares in half diagonally to make 4 triangles
- (12) 5 1/4" squares; cut the squares into quarters diagonally to make 48 triangles
- (24) 4 7/8" squares; cut the squares in half diagonally to make 48 triangles
- (4) 3 1/2" x 12 1/2" strips
- (4) 3 1/2" x 9 1/2" strips
- (6) 2 1/2" x 42" border strips

**From fabric N (Blue Weave), cut:**

- (4) 3 1/2" squares
- (30) 2 1/2" squares
- (7) 2 1/2" x 42" border strips

**From fabric O (Navy Weave), cut:**

- (30) 2 1/2" squares
- (7) 2 1/2" x 42" binding strips

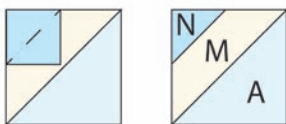
**From fabric P (Orange Tonal Print), cut:**

- (1) 7 1/4" square; cut the square into quarters diagonally to make 4 triangles (2 are extra)
- (1) 6 7/8" square; cut the square in half diagonally to make 2 triangles

## Center Block Assembly

Refer to the photo and the block diagrams following step 12 for placement guidance.

1. Sew together one Fabric A 6 7/8" triangle and one Fabric M 6 7/8" triangle to make one A/M half-square-triangle unit for the center block.
2. With right sides together, place one Fabric N 3 1/2" square on the Fabric M corner of the A/M unit from step 1. Sew diagonally from corner to corner across the N square as shown. Flip the resulting triangle open and press. Trim the excess corner, leaving a 1/4"-wide seam allowance. The completed A/M corner unit should measure 6 1/2" square. (This Flip and Sew method is used throughout the pattern.)



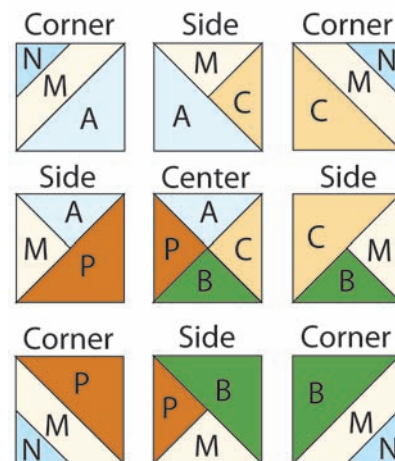
3. Repeat steps 1 and 2 to make one C/M corner unit, one P/M corner unit, and one B/M corner unit.

4. Sew one Fabric C 7 1/4" triangle to one Fabric M 7 1/4" triangle to make a large triangle unit. Then sew the triangle unit to one Fabric A 6 7/8" triangle to complete the C/M/A side unit. The unit should measure 6 1/2" square.

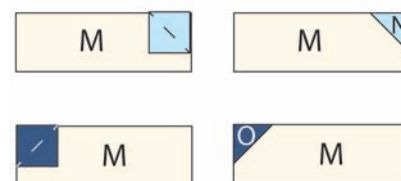
5. Repeat step 4 to make one B/M/C side unit, one A/M/P side unit, and one M/P/B side unit.

6. Sew together one Fabric P 7 1/4" triangle, one Fabric B 7 1/4" triangle, one Fabric C 7 1/4" triangle, and one Fabric A 7 1/4" triangle to make the center unit. The unit should measure 6 1/2" square.

7. Lay out the corner units, side units, and center unit as shown in a nine-patch arrangement. Join the units into rows and then join the rows to complete the center block. The block should measure 18 1/2" square.

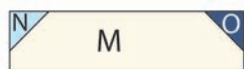


8. Using the "Flip and Sew" method from step 2, sew a Fabric N 2 1/2" square to one end of a Fabric M 3 1/2" x 9 1/2" strip. Sew a Fabric O 2 1/2" square to the other end of a Fabric M 3 1/2" x 9 1/2" strip. Make two of each unit.



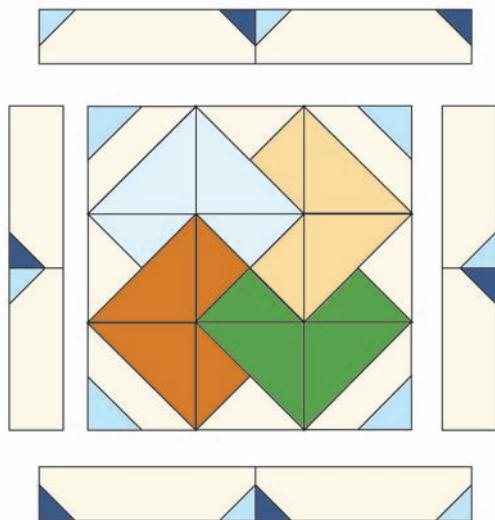
9. Sew together one Fabric N sashing unit and one Fabric O sashing unit with the two triangles meeting in the center to make one 18 1/2"-long side sashing strip. Repeat to make a second side sashing strip.

10. Using the "Flip and Sew" method, sew a Fabric N 2 1/2" square and a Fabric O 2 1/2" square to opposite ends of a Fabric M 3 1/2" x 12 1/2" strip. Make four of these units.



11. Sew together two units from step 10 with the Fabric N and O triangles meeting in the center to make one 24 1/2"-long sashing strip. Repeat to make a second sashing strip.

12. Sew a side sashing strip to opposite sides of the center block. Sew a sashing strip from step 11 to the top and bottom of the center block to complete the 24 1/2" square.



## Small Block Assembly

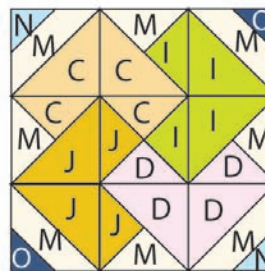
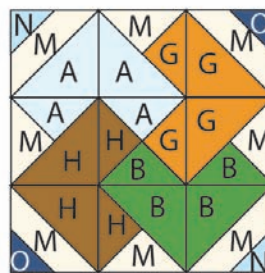
Refer to the photo and the block diagrams following step 16 for placement guidance.

13. Using the appropriate fabrics, join 4 7/8" triangles to make half-square-triangle units. Sew Fabric N or Fabric O 2 1/2" squares to the units using the "Flip and Sew" method described in step 2. Make four corner units of each fabric combination. The units should measure 4 1/2" square.

14. Using the appropriate fabrics, join two 5 1/4" triangles to make a triangle unit. Then sew the triangle unit to a 4 7/8" triangle to complete the side unit. Make four side units of each fabric combination. The units should measure 4 1/2" square.

15. Using the appropriate fabrics, join four 5 1/4" triangles to make a center unit. Make four center units of each fabric combination. The units should measure 4 1/2" square.

16. Lay out four corner units, four side units, and one center unit as shown in a nine-patch arrangement. Join the units into rows and then join the rows to complete the block. The block should measure 12 1/2" square. Make four blocks of each fabric combination.



# Quilt Top Assembly

Refer to the photo for placement guidance.

**17.** Join two blocks to make a two-block unit. Repeat to make a second two-block unit. Sew the two-block units to the center block.

**18.** Join four blocks to make a row. Make a second block row. Sew the block rows to the center row from step 17 to complete the  $48\frac{1}{2}'' \times 48\frac{1}{2}''$  quilt center.

**19.** Join the Fabric M border strips end to end to make a long strip. From the strip, cut two  $52\frac{1}{2}''$ -long strips and two  $48\frac{1}{2}''$ -long strips. Sew the strips to the sides, top, and bottom of the quilt center. The quilt top should now measure  $52\frac{1}{2}'' \times 52\frac{1}{2}''$ .

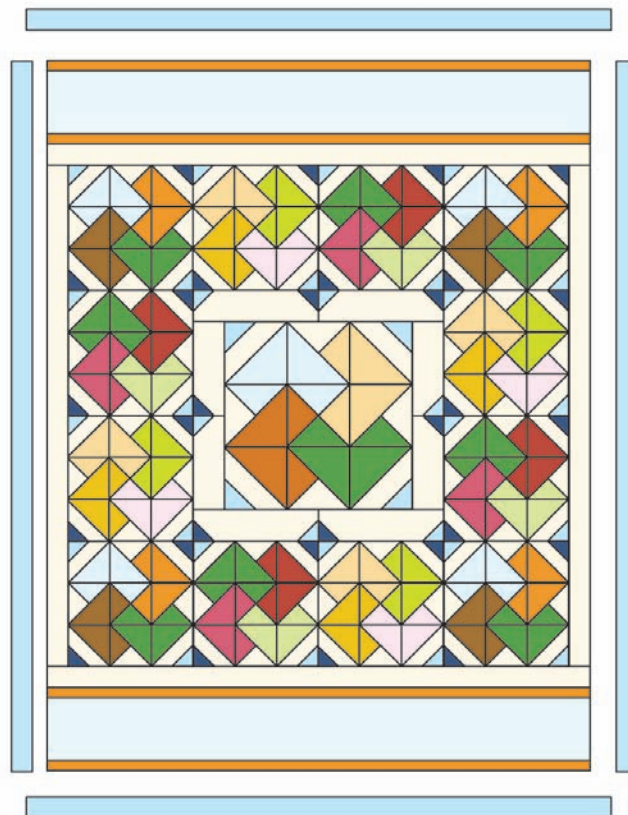
**20.** Join the Fabric G end to end to make a long strip. From the strip, cut four  $52\frac{1}{2}''$ -long strips. Join the Fabric F strips end to end and then cut two  $52\frac{1}{2}''$ -long strips. Sew the Fabric G strips to both long sides of each Fabric F strip to make two  $8\frac{1}{2}'' \times 52\frac{1}{2}''$  border units.



**21.** Sew the border units from step 20 to the top and bottom of the quilt top. The quilt top should now measure  $52\frac{1}{2}'' \times 68\frac{1}{2}''$ .

**22.** Join the Fabric N border strips end to end to make a long strip. From the strip, cut two  $68\frac{1}{2}''$ -long strips and two  $56\frac{1}{2}''$ -long strips. Sew the strips to the sides, top, and bottom of the quilt top.

**23.** Layer the quilt top with batting and backing; baste. Quilt as desired. Using the Fabric O  $2\frac{1}{2}''$ -wide binding strips, bind the edges to finish.



Quilt Assembly

# Daydreams

Fabric Collection by



DAYD 315 N



DAYD 315 WB



DAYD 315 WP



DAYD 316 LB



DAYD 316 LO



DAYD 316 YG



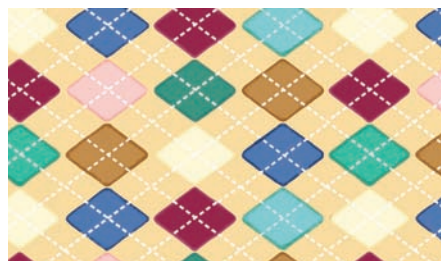
DAYD 317 G



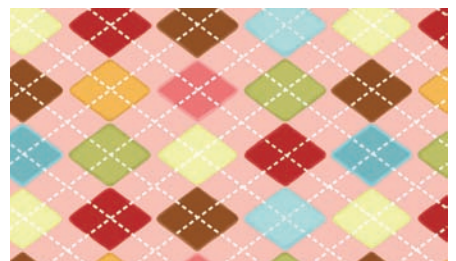
DAYD 317 O



DAYD 319 B



DAYD 319 E



DAYD 319 P

**P&B Textiles** ♦ 1580 Gilbreth Road, Burlingame, CA 94010 ♦ 800-852-2327

For wholesale orders: 14683 Midway Road, Addison, TX 75001 ♦ 800-351-9087 ♦ [www.pbtex.com](http://www.pbtex.com)



100% cotton ♦ Cold wash & dry ♦ 43"/44" ♦ Colors may vary due to printing process ♦ 10/12

All fabrics shown at 50% scale.