

New Traditions

Fabric Collection by **P&B Textiles**

County Fair quilts by Alison Tudor • Quilt Size: 61" square

FREE PATTERN
Ask for our fabrics
in your local
independent
quilt shop!



Alternate Colorway



Alternate Colorway



pbtex.com

County Fair

Quilts by Alison Tudor using the *New Traditions* fabric collection by P&B Textiles

Quilt Size: 61" square

Yardage shown is for the red & blue quilt

but you can easily achieve different looks by substituting other colorways from this collection.

Yardage

NTRA 517 B	3/4 yard
NTRA 518 D	3/4 yard
NTRA 519 B	3/8 yard
NTRA 519 NE	7/8 yard
NTRA 520 D	1 3/4 yards
NTRA 521 WB	1 3/4 yards
NTRA 523 E	7/8 yard
BACKING	3 7/8 yards of any NTRA fabric

Cutting

All strips are cut across the width of fabric (wof).

From NTRA 517 B, cut:

- (4) 1 3/4" x wof strips (block A)
- (2) 2 1/2" x wof strips; cut into (32) 2 1/2" squares (block B)
- (5) 2" x wof inner-border strips

From NTRA 518 D, cut:

- (4) 1 3/4" x wof strips (block A)
- (7) 2 1/4" x wof binding strips

From NTRA 519 B, cut:

- (3) 3 3/8" x wof strips; cut into (32) 3 3/8" squares (block B)

From NTRA 519 NE, cut:

- (8) 1 3/4" x wof strips (block A)
- (3) 3 3/8" x wof strips; cut into (32) 3 3/8" squares (block B)

From NTRA 520 D, cut:

- (6) 3 3/8" x wof strips; cut into (64) 3 3/8" squares (block B)
- (7) 5 1/2" x wof outer-border strips

From NTRA 521 WB, cut:

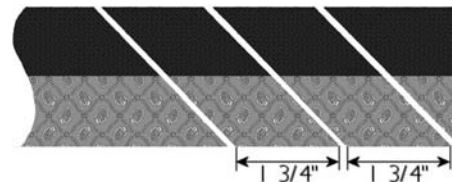
- (4) 4 3/8" x wof strips; cut into (32) 4 3/8" squares. Cut the squares in half diagonally to yield (64) triangles. (block A)
- (3) 3 3/8" x wof strips; cut into (32) 3 3/8" squares. Cut the squares in half diagonally to yield (64) triangles. (block A)
- (3) 3 3/8" x wof strips; cut into (32) 3 3/8" squares (block B)

From NTRA 523 E, cut:

- (6) 3 3/8" x wof strips; cut into (64) 3 3/8" squares (block B)
- (2) 2 1/2" x wof strips; cut into (32) 2 1/2" squares (block B)

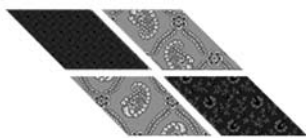
Block A Assembly

1. Join one 1 3/4"-wide 517 B strip and one 519 NE strip along their long edges to make a strip set. Make four strip sets. With the blue strip on the bottom, cut off the end of the strip set at a 45° angle. Measure 1 3/4" from the cut end of the strip set and cut a 1 3/4"-wide segment. Repeat to cut a total of (64) 1 3/4" segments.



2. Repeat step 1, joining 518 D strips and 519 NE strips to make four strip sets. With the red strip on top, cut a total of (64) 1 3/4" segments.

3. Join the red/tan segments and blue/tan segments in pairs to make (64) diamond units.

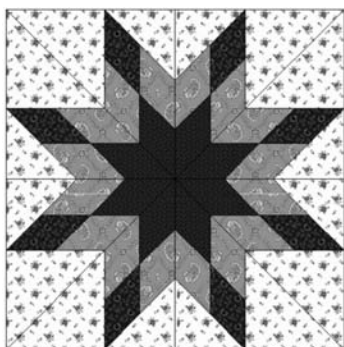


4. Using the 521 WB triangles, sew a $4\frac{3}{8}$ " triangle and a $3\frac{3}{8}$ " triangle to the blue end of each diamond unit as shown. Make 32 units and 32 reverse units.



5. Join one unit and one reverse unit along their long edges to make a corner unit. Make 32 corner units.

6. Join four corner units as shown to make a block. Make a total of eight blocks.



Block B Assembly

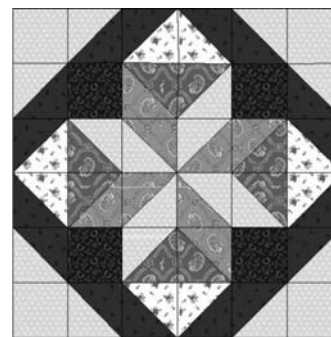
7. Using (32) $3\frac{3}{8}$ " squares of each fabric, layer a 523 E square right sides together with a 520 D square. Draw a diagonal line from corner to corner on the wrong side of the cream square. Sew $\frac{1}{4}$ " on each side of the drawn line. Cut the squares apart on the line to make two half-square-triangle units, measuring $2\frac{1}{2}$ " square. Make a total of 64 cream/red units.

8. Repeat step 7, using the remaining 520 D squares and the 521 WB squares to make 64 red/white half-square-triangle units.

9. In the same manner, use (16) 523 E squares and (16) 519 B squares to make 32 cream/light-blue half-square-triangle units. Use (16) 519 NE squares and the remaining 519 B squares to make 32 tan/light-blue half-square-triangle units.

10. Use the remaining 523 E squares and the remaining 519 NE squares to make 32 cream/tan half-square-triangle units.

11. Lay out the 8 cream/red units, 8 red/white units, 4 cream/light-blue units, 4 tan/light-blue units, 4 cream/tan units, 4 cream $2\frac{1}{2}$ " squares, and 4 dark blue (517 B) squares in six rows as shown. Join the pieces in each row and then join the rows to complete the block. Repeat to make a total of eight blocks.



Quilt Assembly

12. Referring to the photo for placement guidance, lay out the blocks in four rows of four blocks each, alternating the A and B blocks in each row and from row to row. Join the blocks into rows and then join the rows.

13. Join the 2"-wide 517 B strips end to end. Measure the length of the quilt and cut two strips to this length. Sew the strips to the sides of the quilt top. Measure the width of the quilt top and cut two strips to this length. Sew the strips to the top and bottom of the quilt top for the inner border.

14. Join the $5\frac{1}{2}$ "-wide 520 D strips end to end. Repeat step 13 to measure, cut, and sew the strips to the sides, top, and bottom of the quilt top for the outer border.

15. Layer the quilt top with batting and backing; baste. Quilt as desired. Using the $2\frac{1}{4}$ "-wide 518 D binding strips, bind the edges to finish.

New Traditions

Fabric Collection by P&B Textiles



NTRA 517 B



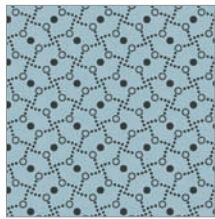
NTRA 517 LK



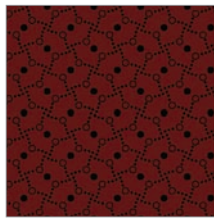
NTRA 517 Z



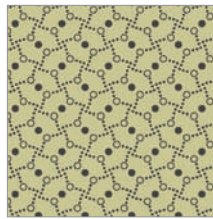
NTRA 517 ZZ



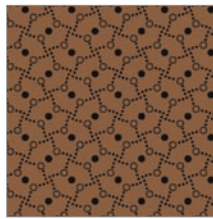
NTRA 518 B



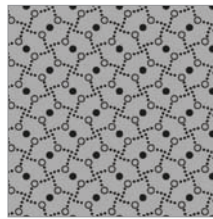
NTRA 518 D



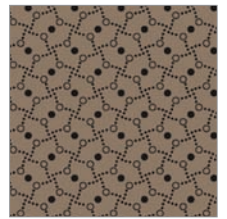
NTRA 518 G



NTRA 518 I



NTRA 518 S



NTRA 518 Z



NTRA 519 B



NTRA 519 D



NTRA 519 G



NTRA 519 I



NTRA 519 NE



NTRA 519 U



NTRA 520 D



NTRA 520 G



NTRA 520 NE



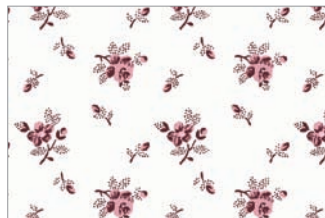
NTRA 520 U



NTRA 521 EZ



NTRA 521 WB



NTRA 521 WR



NTRA 521 WS



NTRA 523 E



NTRA 523 G



NTRA 523 K



NTRA 523 Z

P&B Textiles ♦ 1580 Gilbreth Road, Burlingame, CA 94010 ♦ 800-852-2327

For wholesale orders: 14683 Midway Road, Addison, TX 75001 ♦ 800-351-9087 ♦ www.pbtex.com



100% cotton ♦ Cold wash & dry ♦ 43"/44" ♦ Colors may vary due to printing process ♦ 10/12

All fabrics shown at 70% scale.