



Hello Dahlia!

Fabric Collection by P&B Textiles

FREE PATTERN
Ask for our fabrics
in your local
independent
quilt shop!



Double Dahlias quilt by Nancy Mahoney • Size: 57" x 67"



pbtex.com

Double Dahlias

Quilt by Nancy Mahoney using the Hello Dahlia! fabric collection by P&B Textiles
Quilt Size: 57" x 67"

Yardage

Fabric A	HDAH 441 R	7/8 yard
Fabric B	HDAH 442 RK	1/4 yard
Fabric C	HDAH 443 R	3/8 yard
Fabric D	HDAH 444 K	1/2 yard
Fabric E	HDAH 444 R	3/4 yard
Fabric F	HDAH 445 W	3/4 yard
Fabric G	HDAH 446 S	3/8 yard
Fabric H	HDAH 447 K	1/4 yard
Fabric I	HDAH 447 R	3/8 yard
Fabric J	HDAH 447 S	1/4 yard
Fabric K	CSNE W (white solid)	1 3/4 yard
BACKING	any HDAH fabric	3 5/8 yards

Cutting

From fabric A (HDAH 441 R), cut:

- (2) 12 1/2" x 42" strips; cut into (10) 7 1/2" x 12 1/2" rectangles

From fabric B (HDAH 442 RK), cut:

- (1) 3 1/2" x 42" strip; cut into (10) 3 1/2" squares

From fabric C (HDAH 443 R), cut:

- (2) 5 1/2" x 42" strip; cut into (10) 5 1/2" squares

From fabric D (HDAH 444 K), cut:

- (7) 2 1/4" x 42" binding strips

From fabric E (HDAH 444 R), cut:

- (1) 12 1/2" x 42" strip; cut into (20) 1 1/4" x 12 1/2" strips
- (1) 9" x 42" strip; cut into (20) 1 1/4" x 9" strips

From fabric F (HDAH 445 W), cut:

- (6) 3" x 42" outer-border strips

From fabric G (HDAH 446 S), cut:

- (2) 5 1/2" x 42" strip; cut into (10) 5 1/2" squares

From fabric H (HDAH 447 K), cut:

- (1) 3 1/2" x 42" strip; cut into (10) 3 1/2" squares

From fabric I (HDAH 447 R), cut:

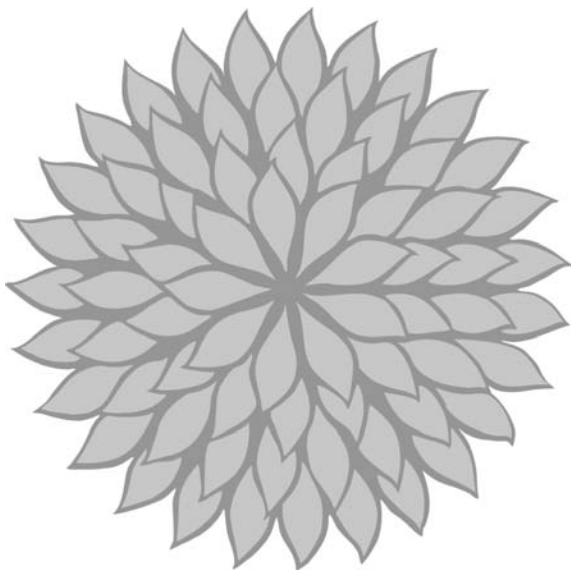
- (2) 5 1/2" x 42" strip; cut into (10) 5 1/2" squares

From fabric J (HDAH 447 S), cut:

- (1) 3 1/2" x 42" strip; cut into (10) 3 1/2" squares

From fabric K (CSNE W), cut:

- (1) 14" x 42" strip; cut into (20) 1 1/4" x 14" strips
- (1) 10 1/2" x 42" strip; cut into (20) 1 1/4" x 10 1/2" strips
- (3) 5 1/2" x 42" strips; cut into (60) 1 1/2" x 5 1/2" rectangles *and* (8) 1 1/2" x 3 1/2" rectangles
- (2) 3 1/2" x 42" strips; cut into (52) 1 1/2" x 3 1/2" rectangles (combined total of 60 rectangles)
- (6) 1 1/2" x 42" inner-border strips



Block Assembly

1. Sew $1\frac{1}{4}$ " x $12\frac{1}{2}$ " fabric E strips to opposite sides of a fabric A rectangle. Sew $1\frac{1}{4}$ " x 9" fabric E strips to the top and bottom of the fabric A rectangle to make a rectangular unit. Make 10 units.
2. Sew $1\frac{1}{4}$ " x 14" fabric K strips to opposite sides of a unit from step 1. Sew $1\frac{1}{4}$ " x $10\frac{1}{2}$ " fabric K strips to the top and bottom of the unit to complete a block. The block should measure $10\frac{1}{2}$ " x $15\frac{1}{2}$ ". Make 10 blocks total.

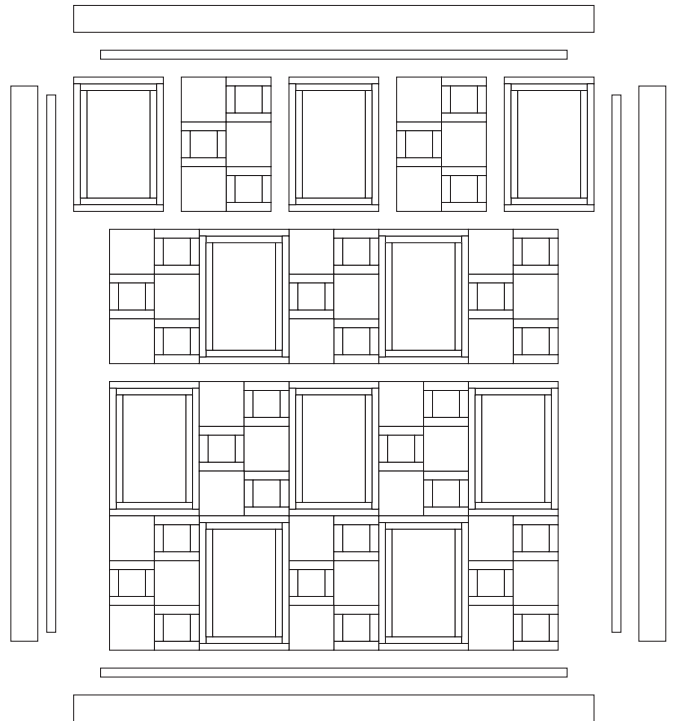


3. Sew $1\frac{1}{2}$ " x $3\frac{1}{2}$ " fabric K strips to opposite sides of a fabric B square. Sew $1\frac{1}{2}$ " x $5\frac{1}{2}$ " fabric K strips to the top and bottom of the fabric B square to make a unit. Make 10 units.
4. Repeat step 3 using (20) $1\frac{1}{2}$ " x $3\frac{1}{2}$ " fabric K strips, (20) $1\frac{1}{2}$ " x $5\frac{1}{2}$ " fabric K strips, and the fabric H squares to make 10 units.
5. Repeat step 3 using the remaining $1\frac{1}{2}$ " x $3\frac{1}{2}$ " and $1\frac{1}{2}$ " x $5\frac{1}{2}$ " fabric K strips, and the fabric J squares to make 10 units.
6. Lay out one fabric I square, one fabric C square, one fabric G square, and one unit each from steps 3–5 in three rows as shown. Join the pieces into rows and then join the rows to complete the block. The block should measure $10\frac{1}{2}$ " x $15\frac{1}{2}$ ". Make 10 blocks total.



Quilt Assembly

7. Lay out the blocks in four rows of five blocks each, alternating the blocks as shown in the photo. Join the blocks into rows and then join the rows.
8. Join the $1\frac{1}{2}$ " x 42" fabric K strips end to end to make a long strip. Measure the length of the quilt top. From the long strip, cut two fabric K strips to this length and sew them to the sides of the quilt top. Measure the width of the quilt top. From the remaining strip, cut two fabric K strips to this length and sew them to the top and bottom of the quilt top to complete the inner border.
9. Repeat step 8, using the fabric F strips for the outer border.
10. Layer the quilt top with batting and backing; baste. Quilt as desired. Using the fabric D binding strips, bind the edges to finish.



Quilt Layout

Hello Dahlia!



HDAH 441 R



HDAH 442 KW



HDAH 442 RK



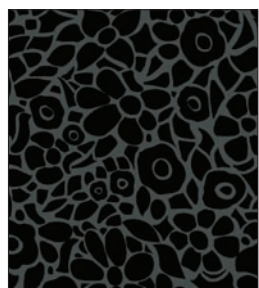
HDAH 442 WR



HDAH 443 K



HDAH 443 R



HDAH 444 K



HDAH 444 R



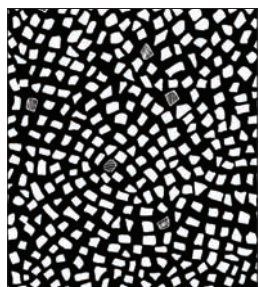
HDAH 446 K



HDAH 446 R



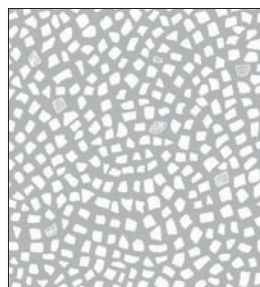
HDAH 446 S



HDAH 447 K



HDAH 447 R



HDAH 447 S



HDAH 445 W

P&B Textiles ♦ www.pbtex.com ♦ 800-351-9087

45-47 Washington St, Pawtucket, RI 02860 ♦ 237 W. 35th St, 11th floor, New York, NY 10001



100% cotton ♦ Cold wash & dry ♦ 43"/44" ♦ Colors may vary due to printing process ♦ 2/13

All fabrics shown at 40% scale.