

Mariko

Metallic Accent Collection

Elegant Fans quilts
by Heidi Pridemore

Size: 64" x 76"



FREE PATTERN
Ask for our fabrics
in your local
independent
quilt shop!



pbtex.com

Elegant Fans



Quilt by Heidi Pridemore using the *Mariko* fabric collection from P&B Textiles • Size: 64" x 76"

Yardage

| FABRIC | PINK VER. | BLUE VER. | YARDAGE |
|-------------|-----------------|--------------|-------------|
| Fabric A | MARI 861 P | MARI 861 T | 1 yard |
| Fabric B | MARI 865 T | MARI 865 P | 1 1/4 yards |
| Fabric C | MARI 862 P | MARI 862 T | 3 yards |
| Fabric D | MARI 863 P | MARI 863 P | 5/8 yard |
| Fabric E | MARI 866 P | MARI 866 P | 1/2 yard |
| Fabric F | MARI 863 T | MARI 863 T | 3/4 yard |
| Fabric G | MARI 866 T | MARI 866 T | 1/2 yard |
| Fabric H | MARI 864 K | MARI 864 K | 1 yard |
| Fabric I | SUEM 300 LX* | SUEM 300 LX* | 1 3/4 yards |
| Backing | Any MARI fabric | | 5 yards |
| Fusible web | | | 5 yards |

* *Suede Midtones* collection

Cutting

From fabric A, cut:

- (1) 20 1/2" x 32 1/2" rectangle

From fabric B, cut:

- (2) 2 1/2" x 32 1/2" strips
- (2) 2 1/2" x 24 1/2" strips
- (2) 2 1/2" x 36 1/2" strips
- (9) 2 1/2" x 42" strips

From fabric C, fussy cut:

- (8) 6 1/2" x 42" strips, centering the same design in the middle of each strip

From fabric D, cut:

- (8) small arches, prepared with fusible web
- (8) large arches, prepared with fusible web

From fabric E, cut:

- (8) small arches, prepared with fusible web
- (4) large arches, prepared with fusible web

From fabric F, cut:

- (8) small arches, prepared with fusible web
- (8) large arches, prepared with fusible web
- (2) 4 1/2" squares

From fabric G, cut:

- (4) small arches, prepared with fusible web
- (8) large arches, prepared with fusible web

From fabric H, cut:

- (4) small arches, prepared with fusible web
- (4) large arches, prepared with fusible web
- (8) 2 1/2" x 42" binding strips

From fabric I, cut:

- (32) 6 1/2" squares
- (32) 4 1/2" squares

Fusible Appliqué Instructions

1. Following the manufacturer's instructions, trace the listed number of each shape onto the paper side of the fusible web. Roughly cut out each template about 1/4" outside the drawn lines.
2. Referring to the cutting list and the templates, fuse each shape to the wrong side of the fabrics as indicated. Cut out each shape on the drawn lines.
3. Position and fuse each large arch on top of each 6 1/2" Fabric I square, aligning the straight edges of the arch with the straight sides of the square to make (32) 6 1/2" blocks. The straight sides will be sewn into the seam when the blocks are sewn together.
4. Repeat step 3, fusing each small arch on top of a 4 1/2" Fabric I square to make (32) 4 1/2" blocks.
5. Finish the raw curved edges of each arch with a decorative stitch such as a satin or buttonhole stitch.

Quilt Top Assembly

Refer to the photo for placement guidance, as needed.

6. Sew 32 1/2"-long Fabric B strips to opposite sides of the Fabric A panel. Sew 24 1/2"-long Fabric B strips to the top and bottom of the Fabric A panel to make the quilt top center. The center should measure 24 1/2" x 36 1/2".

7. Referring to the quilt layout diagram, join eight 4 1/2" blocks and one 4 1/2" Fabric F square to make a side border. Repeat to make a second side border. Sew the borders to the quilt top center.

8. Join eight 4 1/2" blocks to make the top border as shown in the layout diagram. Repeat to make the bottom border. Sew the borders to the quilt top. The quilt top should measure 32 1/2" x 44 1/2".

9. Join the 2 1/2" x 42" Fabric B strips end to end to make a long strip. From the pieced strip, cut two 44 1/2"-long strips, two 52 1/2"-long strips, and two 60 1/2"-long strips.

10. Sew 44 1/2"-long Fabric B strips from step 9 to the sides of the quilt top. Sew 36 1/2"-long Fabric B strips to the top and bottom of the quilt top. The quilt top should measure 36 1/2" x 48 1/2".

11. Join eight 6 1/2" blocks as shown in the layout diagram to make a side border. Repeat to make a second side border. Sew the borders to the quilt top.

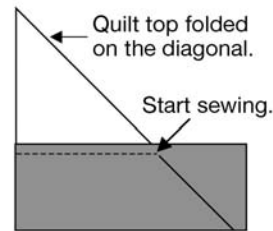
12. Join eight 6 1/2" blocks as shown in the layout diagram to make the top border. Repeat to make the bottom border. Sew the borders to the quilt top. The quilt top should measure 48 1/2" x 60 1/2".

13. Sew 60 1/2"-long Fabric B strips to the sides of the quilt top. Then sew 52 1/2"-long Fabric B strips to the top and bottom of the quilt top. The quilt top should measure 62 1/2" x 64 1/2".

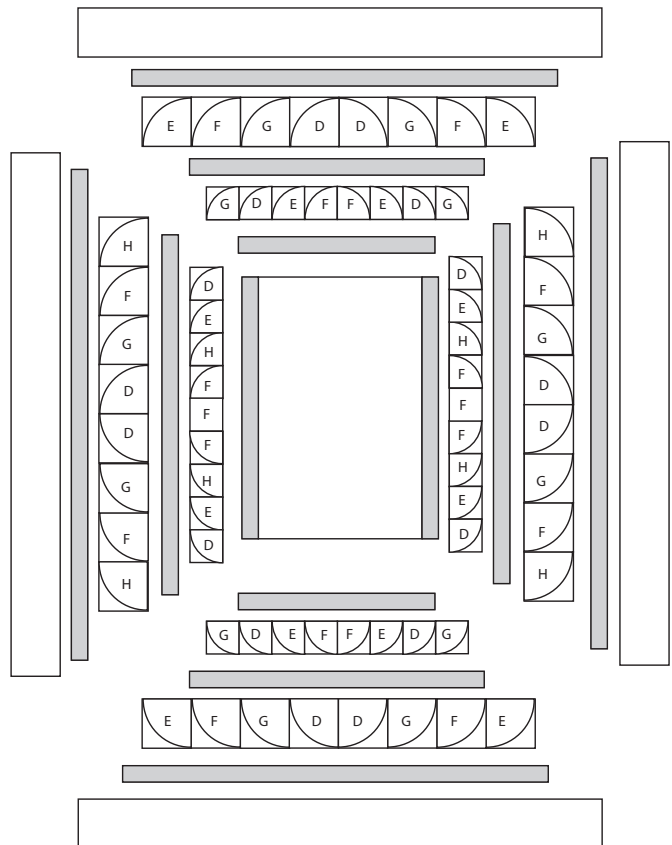
14. Join two Fabric C strips end to end to make a long strip. Make four pieced strips. From the pieced strips, cut two 78"-long strips and two 66"-long strips.

15. Center and pin step 14 border strips to each side of the quilt top, noting the orientation of each strip. Sew the strips starting and stopping 1/4" from the raw edge and backstitch. Do not trim the excess.

16. To miter each corner, fold the quilt top diagonally with wrong sides together. This should align the strips from adjacent sides. Starting at the sewn seam as shown below, draw a 45° line to the edge of the strip. Sew on the drawn line. Trim the excess fabric leaving a 1/4" seam allowance. Repeat with the remaining corners of the quilt top.

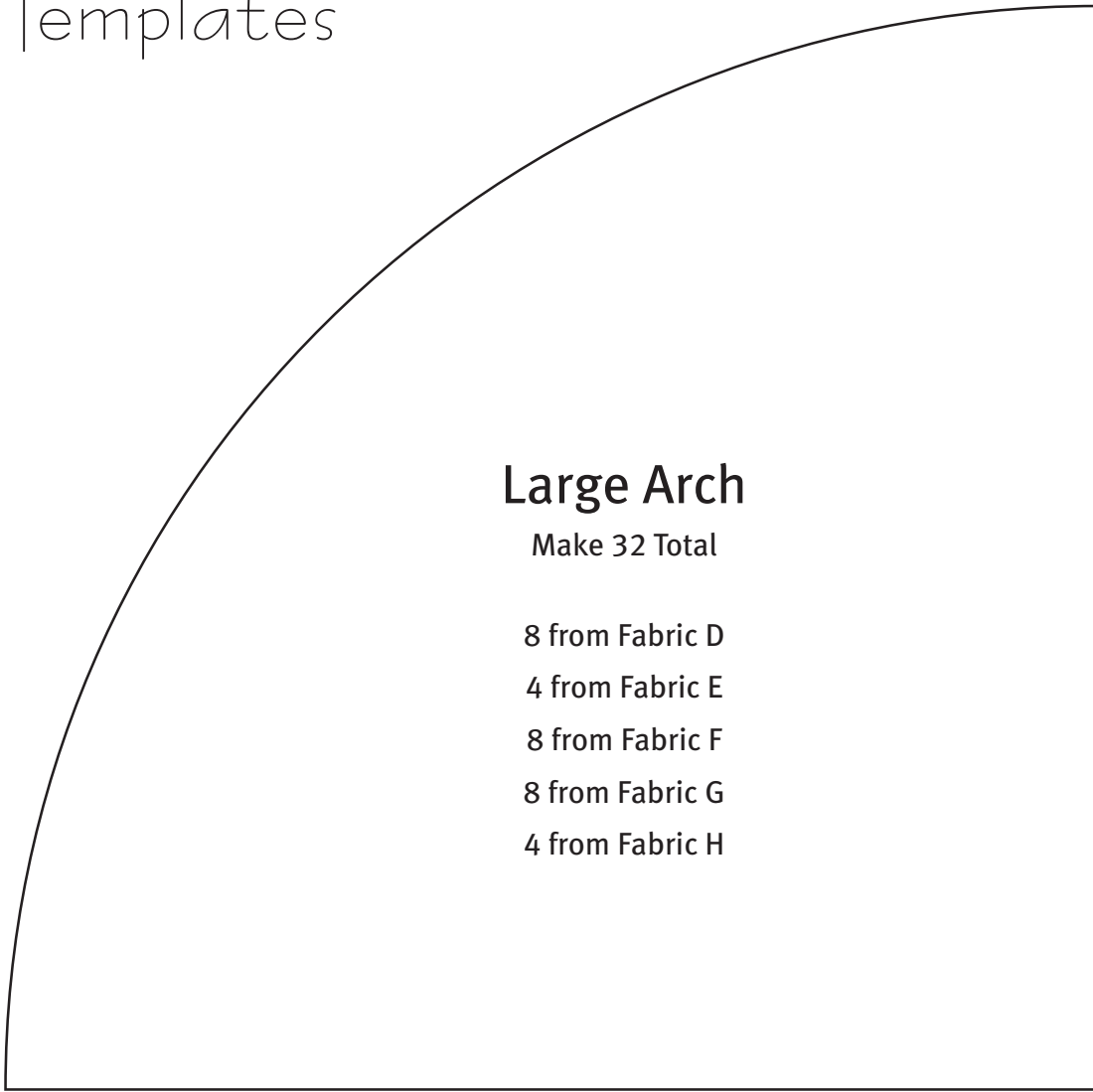


17. Layer the quilt top with batting and backing; baste. Quilt as desired. Using the 2 1/2"-wide Fabric H strips, bind the edges to finish.



Layout Diagram

Templates



Large Arch

Make 32 Total

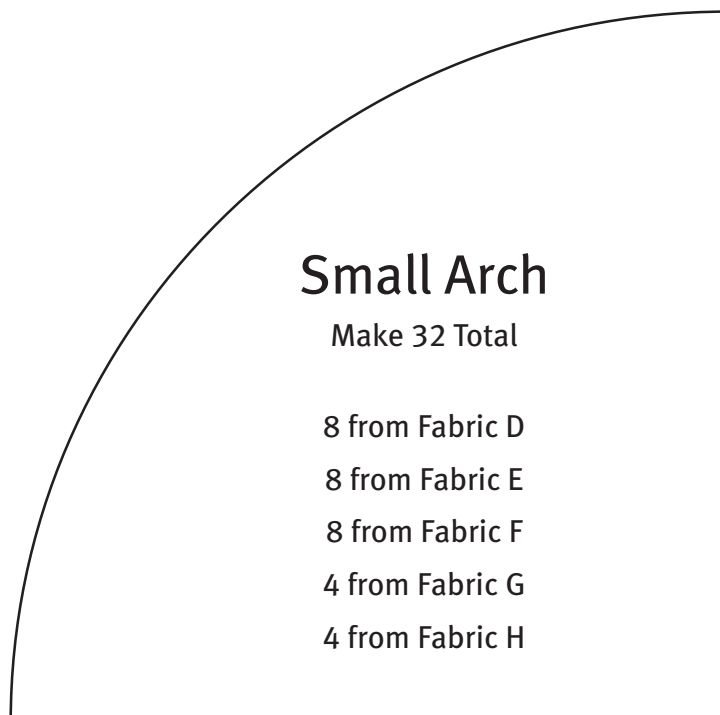
8 from Fabric D

4 from Fabric E

8 from Fabric F

8 from Fabric G

4 from Fabric H



Small Arch

Make 32 Total

8 from Fabric D

8 from Fabric E

8 from Fabric F

4 from Fabric G

4 from Fabric H



MARI 861 P



MARI 861 T

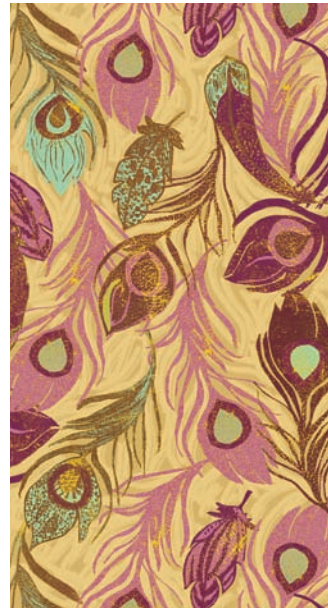


MARI 862 P



MARI 862 T

Stripe runs selvage to selvage with a 20" repeat



MARI 863 P



MARI 863 T



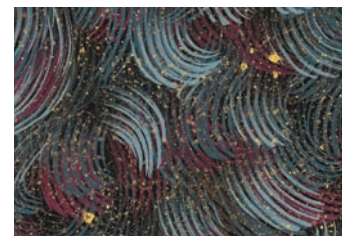
MARI 864 K



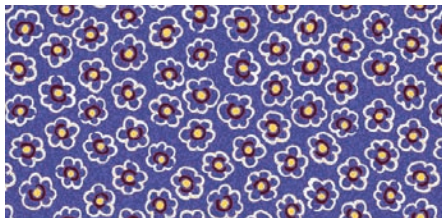
MARI 864 P



MARI 865 P



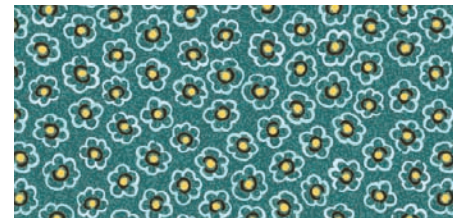
MARI 865 T



MARI 866 B



MARI 866 P



MARI 866 T

P&B Textiles ♦ www.pbtex.com ♦ 800-351-9087

45-47 Washington St, Pawtucket, RI 02860 ♦ 237 W. 35th St, 11th floor, New York, NY 10001



100% cotton ♦ Cold wash & dry ♦ 43"/44" ♦ Colors may vary due to printing process ♦ 11/12

All fabrics shown at 25% scale except main fabric 861 which is 15%.