



# SILVIA'S GARDEN

Fabric Collection by **Silvia Vassileva**

**FREE PATTERN**

Ask for our fabrics  
in your local  
independent  
quilt shop!



*Enchanted Garden* quilt by Larene Smith • Size: 60" x 72"



[pbtex.com](http://pbtex.com)



# Enchanted Garden

Quilt by Larene Smith of The Quilted Button using the *Silvia's Garden* collection  
by Silvia Vassileva for P&B Textiles • Size: 60" x 72"

## Yardage

SILV 831 R	Large Flower Print	1 yard
SILV 832 T	Teal Floral Print	1 7/8 yard
SILV 833 E	Scattered Leaf Print	1/2 yard
SILV 834 NE	Tan Flower Print	1 yard
SILV 835 T	Teal Stripe	1/2 yard
SILV 836 T	Teal Checkerboard	1/2 yard
SILV 837 T	Blue Tonal	1 yard
BACKING	Any SILV fabric	3 3/4 yards

## Cutting

All strips are cut across the width of fabric (wof).

### From SILV 831 R, cut:

(4) 7 1/2" x wof strips; cut into (15) 7 1/2" x 8 1/2" rectangles

### From SILV 832 T, cut:

(4) 1 1/2" x 42" strips  
(2) 12 1/2" x 42" strips; cut into (60) 1" x 12 1/2" rectangles  
(4) 7 1/2" x 42" strips; cut into (60) 2 1/2" x 7 1/2" rectangles

### From SILV 833 E, cut:

(2) 6" x 42" strips

### From SILV 834 NE, cut:

(4) 7 1/2" x 42" strip; cut into (15) 7 1/2" x 8 1/2" rectangles

### From SILV 835 T, cut:

(2) 6" x 42" strips

### From SILV 836 T, cut:

(2) 6" x 42" strips

### From SILV 837 T, cut:

(2) 6" x 42" strips  
(7) 2 1/2" x 42" binding strips



## Block A Assembly

1. Sew 832 T  $2\frac{1}{2}$ " x  $7\frac{1}{2}$ " rectangles to opposite ends of an 831 R rectangle to make a  $7\frac{1}{2}$ " x  $12\frac{1}{2}$ " rectangular unit. Make 15 units.

2. Sew 832 T 1" x  $12\frac{1}{2}$ " rectangles to the opposite sides of a rectangular unit from step 1 to make an  $8\frac{1}{2}$ " x  $12\frac{1}{2}$ " unit. Make 15 units.

3. Sew one 836 T strip and one 837 T strip to each long side of one 832 T  $1\frac{1}{2}$ "-wide strip to make a strip set. The strip set should measure  $12\frac{1}{2}$ " x 42". Make a second strip set and crosscut them into (30)  $2\frac{1}{2}$ "-wide segments.



Make 30.

4. Sew segments from step 3 to the top and bottom of each unit from step 2, rotating the segments as shown to complete the block. The block should measure  $12\frac{1}{2}$ " square. Make 15 of block A.



## Block B Assembly

5. Sew 832 T  $2\frac{1}{2}$ " x  $7\frac{1}{2}$ " rectangles to opposite ends of an 834 NE rectangle to make a  $7\frac{1}{2}$ " x  $12\frac{1}{2}$ " rectangular unit. Make 15 units.

6. Sew 832 T 1" x  $12\frac{1}{2}$ " rectangles to the opposite sides of a rectangular unit from step 5 to make an  $8\frac{1}{2}$ " x  $12\frac{1}{2}$ " unit. Make 15 units.

7. Sew one 833 E strip and one 835 T strip to each long side of one 832 T  $1\frac{1}{2}$ "-wide strip to make a strip set. The strip set should measure  $12\frac{1}{2}$ " x 42". Make a second strip set and crosscut them into (30)  $2\frac{1}{2}$ "-wide segments.



Make 30.

8. Sew segments from step 7 to opposite sides of each unit from step 6, rotating the segments as shown to complete the block. The block should measure  $12\frac{1}{2}$ " square. Make 15 of block B.



## Quilt Top Assembly

9. Lay out the A and B blocks in six rows of five blocks each, alternating the blocks as shown in the photo. Join the blocks into rows and then join the rows.

10. Layer the quilt top with batting and backing; baste. Quilt as desired. Using the 837 T  $2\frac{1}{2}$ "-wide binding strips, bind the edges to finish.



# SILVIA'S GARDEN

Fabric Collection by Silvia Vassileva



SILV 831 R



SILV 832 T



SILV 832 Z



SILV 833 E



SILV 834 NE



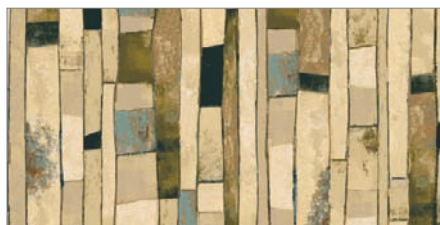
SILV 834 R



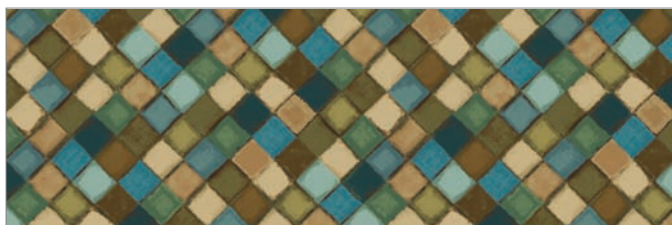
SILV 835 E



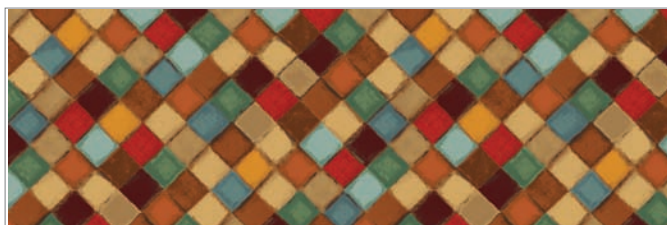
SILV 835 R



SILV 835 T



SILV 836 T



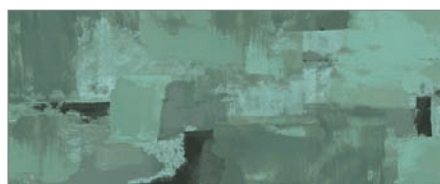
SILV 836 Z



SILV 837 NE



SILV 837 R



SILV 837 T

P&B Textiles ♦ [www.pbtex.com](http://www.pbtex.com) ♦ 800-351-9087

45-47 Washington St, Pawtucket, RI 02860 ♦ 237 W. 35th St, 11th floor, New York, NY 10001



100% cotton ♦ Cold wash & dry ♦ 43"/44" ♦ Colors may vary due to printing process ♦ 12/12

All fabrics shown at 30% scale.