

# Always Blooming



**R&B**  
BOUTIQUE

# Always Blooming

**Flower Town** quilt by Elizabeth Allocco using the *Always Blooming* fabric collection by Susy Pilgrim Waters for P&B Textiles

Size: 53" x 35"

## Yardage

Fabric A	ABLO 960 W	1 panel
Fabric B	ABLO 964 T	$\frac{3}{4}$ yard
Fabric C	ABLO 961 G	$\frac{3}{8}$ yard
Fabric D	ABLO 963 MU	$\frac{2}{3}$ yard
Fabric E	ABLO 966 E	$\frac{1}{3}$ yard
Fabric F	ABLO 964 O	$\frac{1}{4}$ yard
Fabric G	ABLO 965 O	$\frac{1}{4}$ yard
Fabric H	ABLO 968 G	$\frac{1}{4}$ yard
Backing	any ABLO fabric	$1\frac{3}{4}$ yards

## Cutting

*All strips are cut across the width of the fabric.*

### From fabric A (ABLO 960 W), fussy cut:

- (1)  $23\frac{1}{2}$ " x  $41\frac{1}{2}$ " rectangle; centering the design in the middle of the rectangle

### From fabric B (ABLO 964 T), cut:

- (5)  $2\frac{1}{2}$ " x 42" binding strips
- (4)  $1\frac{1}{2}$ " x 42" strips; cut into:
  - (2)  $1\frac{1}{2}$ " x  $41\frac{1}{2}$ " strips
  - (2)  $1\frac{1}{2}$ " x  $25\frac{1}{2}$ " strips
  - (4)  $1\frac{1}{2}$ " x  $5\frac{1}{2}$ " strips

### From fabric C (ABLO 961 G), cut:

- (1)  $5\frac{1}{2}$ " x  $17\frac{1}{2}$ " strip
- (1)  $5\frac{1}{2}$ " x  $12\frac{1}{2}$ " strip
- (1)  $5\frac{1}{2}$ " x  $9\frac{1}{2}$ " strip
- (1)  $4\frac{1}{2}$ " x  $5\frac{1}{2}$ " strip
- (2)  $5\frac{1}{2}$ " squares

### From fabric D (ABLO 963 MU), fussy cut:

- (10)  $5\frac{1}{2}$ " squares; centering a flower design in the middle of each square

### From fabric E (ABLO 966 E), cut:

- (10)  $3\frac{3}{4}$ " squares; cut each square in quarters diagonally to yield (40) quarter-square triangles
- (10)  $3\frac{3}{8}$ " squares; cut each square in half diagonally to yield (20) half-square triangles

### From fabric F (ABLO 964 O), cut:

- (3)  $3\frac{3}{4}$ " squares; cut each square in quarters diagonally to yield (12) quarter-square triangles
- (4)  $3\frac{3}{8}$ " squares; cut each square in half diagonally to yield (8) half-square triangles

### From fabric G (ABLO 965 O), cut:

- (3)  $3\frac{3}{4}$ " squares; cut each square in quarters diagonally to yield (12) quarter-square triangles
- (2)  $3\frac{3}{8}$ " squares; cut each square in half diagonally to yield (4) half-square triangles

### From fabric H (ABLO 968 G), cut:

- (4)  $3\frac{3}{4}$ " squares; cut each square in quarters diagonally to yield (16) quarter-square triangles
- (4)  $3\frac{3}{8}$ " squares; cut each square in half diagonally to yield (8) half-square triangles

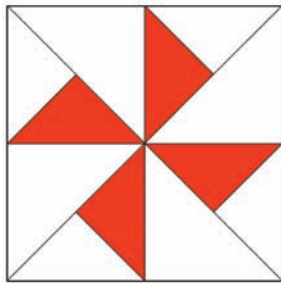


## Pinwheel Blocks

1. Sew a fabric E quarter-square triangle to the short side of a fabric F quarter-square triangle, as shown. Sew the triangle unit to a fabric E half-square triangle, as shown to make a quadrant unit. The unit should measure 3" square. Make a total of four identical units.



2. Join the units from step 1 as shown to make a Pinwheel block. The block should measure 5 1/2" square.



3. Repeat steps 1 and 2, to make two Pinwheel blocks using fabric G quarter-square triangles, four fabric E quarter-square triangles, and four fabric E half-square triangles.

4. In the same way, to make two Pinwheel blocks using fabric H quarter-square triangles, fabric E quarter-square triangles, and fabric E half-square triangles.

5. Repeat steps 1 and 2, to make two Pinwheel blocks using fabric E quarter-square triangles, fabric F quarter-square triangles, and fabric F half-square triangles.

6. Make one Pinwheel block using fabric E quarter-square triangles, fabric G quarter-square triangles, and fabric G half-square triangles.

7. Make two Pinwheel blocks using fabric E quarter-square triangles, fabric H quarter-square triangles, and fabric H half-square triangles.

## Quilt Top Assembly

Refer to the quilt image for placement guidance throughout.

8. Sew a fabric B 1 1/2" x 41 1/2" strip to the top and bottom of the fabric A rectangle. Sew a fabric B 1 1/2" x 25 1/2" strip to the left and right sides of the rectangle. The quilt center should measure 43 1/2" x 25 1/2".

9. To make the left border, join two fabric D squares, one Pinwheel block, one fabric B 1 1/2" x 5 1/2" strip, and the fabric C 5 1/2" x 9 1/2" strip. The strip should measure 5 1/2" x 25 1/2". Sew the strip to the left side of the quilt center.

10. To make the right border, join two fabric D squares, two Pinwheel blocks, one fabric B 1 1/2" x 5 1/2" strip, and the fabric C 4 1/2" x 5 1/2" strip. The strip should measure 5 1/2" x 25 1/2". Sew the strip to the right side of the quilt center.

11. To make the top border, join two fabric D squares, four Pinwheel blocks, one fabric B 1 1/2" x 5 1/2" strip, the fabric C 5 1/2" x 17 1/2" strip, and a fabric C 5 1/2" square. The strip should measure 5 1/2" x 43 1/2". Sew the strip to the top edge of the quilt center.

12. To make the bottom border, join four fabric D squares, three Pinwheel blocks, one fabric B 1 1/2" x 5 1/2" strip, the fabric C 5 1/2" x 12 1/2" strip, and a fabric C 5 1/2" square. The strip should measure 5 1/2" x 43 1/2". Sew the strip to the bottom edge of the quilt center.

13. Layer the quilt top with batting and backing; baste. Quilt as desired. Using the fabric B binding strips, bind the edges to finish.

# Always Blooming

Fabric Collection by **Susy Pilgrim Waters**



ABLO 960 W — shown selvage to selvage



ABLO 961 G



ABLO 960 P



ABLO 961 Z



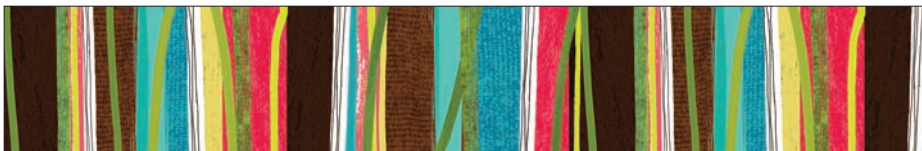
ABLO 963 MU — 12.5% scale



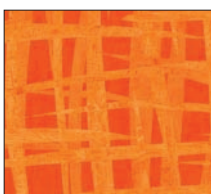
ABLO 964 O



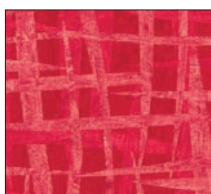
ABLO 964 T



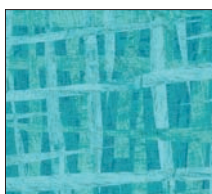
ABLO 962 MU



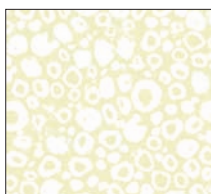
ABLO 965 O



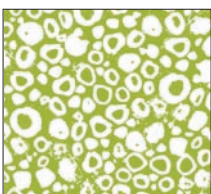
ABLO 965 P



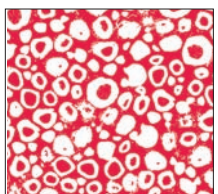
ABLO 965 T



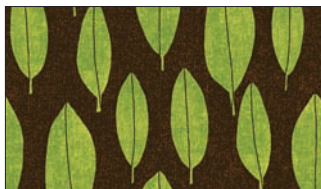
ABLO 966 E



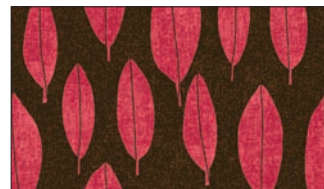
ABLO 966 G



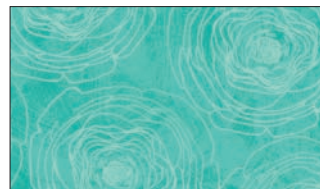
ABLO 966 P



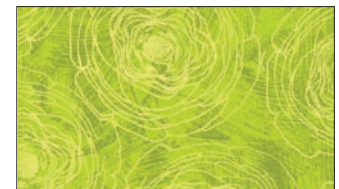
ABLO 967 G



ABLO 967 P



ABLO 968 B



ABLO 968 G



P&B Textiles ♦ [www.pbtex.com](http://www.pbtex.com) ♦ 800-351-9087

45-47 Washington St, Pawtucket, RI 02860 ♦ 237 W. 35th St, 11th floor, New York, NY 10001

100% cotton ♦ Cold wash & dry ♦ 43"/44" ♦ Colors may vary due to printing process

All fabrics shown at 25% scale except where indicated otherwise.