

Flower Drops



Flower Drops

Fiesta! quilt by Nancy Mahoney
using the *Flower Drops* and *Water Drops*
fabric collections by P&B Textiles

Size: 62 3/4" x 79 3/4"

Yardage

Fabric A	FDRO 250 K	1 3/8 yards
Fabric B	FDRO 251 E	1 1/4 yards
Fabric C	FDRO 252 E	3/4 yard
Fabric D	FDRO 253 G	1 yard
Fabric E	FDRO 255 K	3/4 yard
Fabric F	FDRO 255 R	1 1/4 yards
Fabric G	FDRO 255 T	3/8 yard
Fabric H	WDRO 256 Y	1/3 yard
Backing	any FDRO fabric	5 yards

Cutting

All strips are cut across the width of the fabric.

From fabric A (FDRO 250 K), cut:

- (5) 8 1/2" x 42" strips; cut into
(18) 8 1/2" squares

From fabric B (FDRO 251 E), cut:

- (3) 18 1/4" squares; cut the squares into
quarters diagonally to yield 12 side setting
triangles (2 are extra)
- (2) 9 3/8" squares; cut the squares in half
diagonally to yield 4 corner triangles

From fabric C (FDRO 252 E), cut:

- (9) 2 1/2" x 42" strips; cut into
(36) 2 1/2" x 8 1/2" rectangles

From fabric D (FDRO 253 G), cut:

- (7) 4" x 42" outer-border strips

From fabric E (FDRO 255 K), cut:

- (4) 4" border squares
- (8) 2 1/4" x 42" binding strips

From fabric F (FDRO 255 R), cut:

- (16) 2 1/2" x 42" strips; cut into:
 - (38) 2 1/2" x 10 1/2" sashing strips (label as X)
 - (9) 2 1/2" x 12 1/2" sashing strips (label as Y)
 - (1) 2 1/2" x 14 1/2" sashing strips (label as Z)

From fabric G (FDRO 255 T), cut:

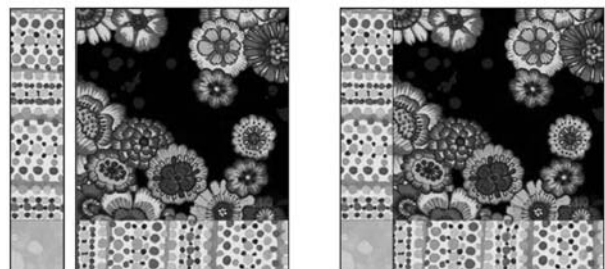
- (7) 1 1/2" x 42" inner-border strips

From fabric H (WDRO 256 Y), cut:

- (3) 2 1/2" x 42" strips; cut into
(38) 2 1/2" squares

Assembly

1. Join one fabric A square, two fabric C rectangles, and one fabric H square to make a 10 1/2" block. Make a total of 18 blocks.

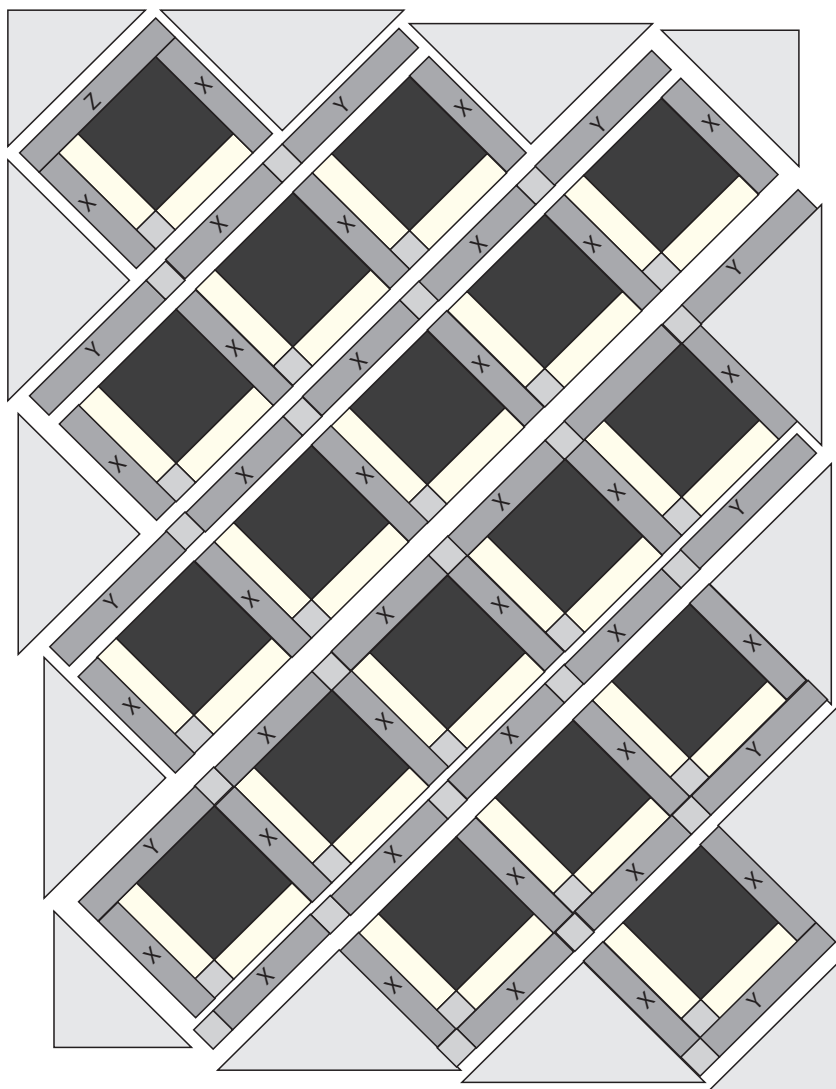


2. Referring to the quilt layout diagram, lay out the blocks, the X, Y, and Z sashing strips, the fabric H squares, and the fabric B side and corner setting triangles as shown. Join the pieces into rows and then join the rows. Trim and square up the quilt top, making sure to leave $\frac{1}{4}$ " beyond the points of all squares and sashing strips for seam allowances.

3. Join the fabric G strips end to end to make a long strip. Measure the length of the quilt top. From the long strip, cut two fabric G strips to this length and sew them to the sides of the quilt top. Measure the width of the quilt top. From the remaining strip, cut two fabric G strips to this length and sew them to the top and bottom of the quilt top to complete the inner border.

4. Join the fabric D strips end to end to make a long strip. Measure the length of the quilt top. From the long strip, cut two fabric D strips to this length and sew them to the sides of the quilt top. Measure the width of the quilt top. From the remaining strip, cut two fabric D strips to this length. Sew fabric E squares to the ends of these strips and sew them to the top and bottom of the quilt top to complete the outer border.

5. Layer the quilt top with batting and backing; baste. Quilt as desired. Using the fabric E binding strips, bind the edges to finish.



QUILT LAYOUT

Flower Drops

Fabric Collection by **P&B Textiles**



FDRO 250 D



FDRO 250 K



FDRO 251 E



FDRO 251 K



FDRO 253 D



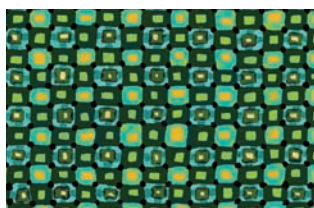
FDRO 253 G



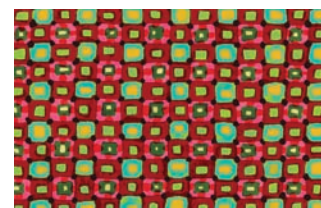
FDRO 252 E



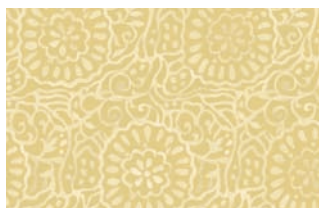
FDRO 252 K



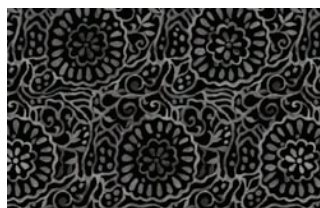
FDRO 254 G



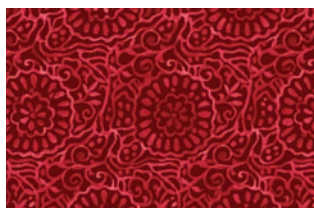
FDRO 254 R



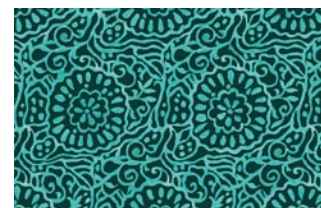
FDRO 255 E



FDRO 255 K



FDRO 255 R



FDRO 255 T



P&B Textiles ♦ www.pbtex.com ♦ 800-351-9087
45-47 Washington St, Pawtucket, RI 02860 ♦ 237 W. 35th St, 11th floor, New York, NY 10001

⚠ 100% cotton ♦ Cold wash & dry ♦ 43"/44" ♦ Colors may vary due to printing process
All fabrics shown at 30% scale.