

Hello Dahlia!



Fabric Collection by P&B Textiles

FREE PATTERN
Ask for our fabrics
in your local
independent
quilt shop!



Flower Pinwheels quilt by Heidi Pridemore • Size: 72" square



pbtex.com

Flower Pinwheels

Quilt by Heidi Pridemore using the Hello Dahlia! fabric collection by P&B Textiles
Quilt Size: 72" square

Yardage

Fabric A	HDAH 441 R	Multi Dahlia	3/8 yard
Fabric B	HDAH 442 KW	Black Dahlia	2/3 yard
Fabric C	HDAH 442 RK	Red Dahlia	1 yard
Fabric D	HDAH 442 WR	White Dahlia	3/4 yard
Fabric E	HDAH 443 K	Black Flowers	7/8 yard
Fabric F	HDAH 443 R	Red Flowers	2/3 yard
Fabric G	HDAH 444 K	Black Tonal Flowers	3/8 yard
Fabric H	HDAH 444 R	Red Tonal Flowers	1/2 yard
Fabric I	HDAH 446 K	Black Rings	1/4 yard
Fabric J	HDAH 447 R	Red Dots	1/4 yard
Fabric K	HDAH 446 S	Silver Rings	7/8 yard
Fabric L	HDAH 447 K	Black Dots	3/8 yard
Fabric M	HDAH 447 S	Silver Dots	1 1/8 yards
Backing	any HDAH fabric		4 1/2 yards

Cutting

From Fabric A (Multi Dahlia), cut:

- (1) 10 1/2" x 42" strip; cut into (4) 10 1/2" squares

From Fabric B (Black Dahlia), cut:

- (8) 2 1/2" x 42" strips

From Fabric C (Red Dahlia), cut:

- (1) 10 1/2" x 42" strip; cut into (4) 10 1/2" squares
- (8) 2 1/2" x 42" binding strips

From Fabric D (White Dahlia), cut:

- (2) 10 1/2" x 42" strips; cut into (5) 10 1/2" squares

From Fabric E (Black Flowers), cut:

- (4) 6 7/8" x 42" strips; cut into (16) 6 7/8" squares.
Cut the squares in half diagonally to make (32) triangles.

From Fabric F (Red Flowers), cut:

- (2) 6 1/2" x 42" squares; cut into (12) 6 1/2" squares
- (1) 6 7/8" x 42" strip; cut into (4) 6 7/8" squares.
Cut the squares in half diagonally to make (8) triangles

From Fabric G (Black Tonal Flowers), cut:

- (6) 1 1/2" x 42" strips; cut into (8) 1 1/2" x 10 1/2" strips *and* (8) 1 1/2" x 12 1/2" strips

From Fabric H (Red Tonal Flowers), cut:

- (8) 1 1/2" x 42" strips; cut into (10) 1 1/2" x 10 1/2" strips *and* (10) 1 1/2" x 12 1/2" strips

From Fabric I (Black Rings), cut:

- (1) 6 7/8" x 42" strip; cut into (2) 6 7/8" squares. Cut the squares in half diagonally to make (4) triangles.

From Fabric J (Red Dots), cut:

- (1) 6 7/8" x 42" strip; cut into (2) 6 7/8" squares. Cut the squares in half diagonally to make (4) triangles.

From Fabric K (Silver Rings), cut:

- (4) 6 7/8" x 42" strips; cut into (16) 6 7/8" squares. Cut the squares in half diagonally to make (32) triangles.

From Fabric L (Black Dots), cut:

- (6) 1 1/2" x 42" strips; cut into (8) 1 1/2" x 10 1/2" strips *and* (8) 1 1/2" x 12 1/2" strips

From Fabric M (Silver Dots), cut:

- (5) 6 7/8" x 42" strips; cut into (24) 6 7/8" squares. Cut the squares in half diagonally to make (48) triangles.

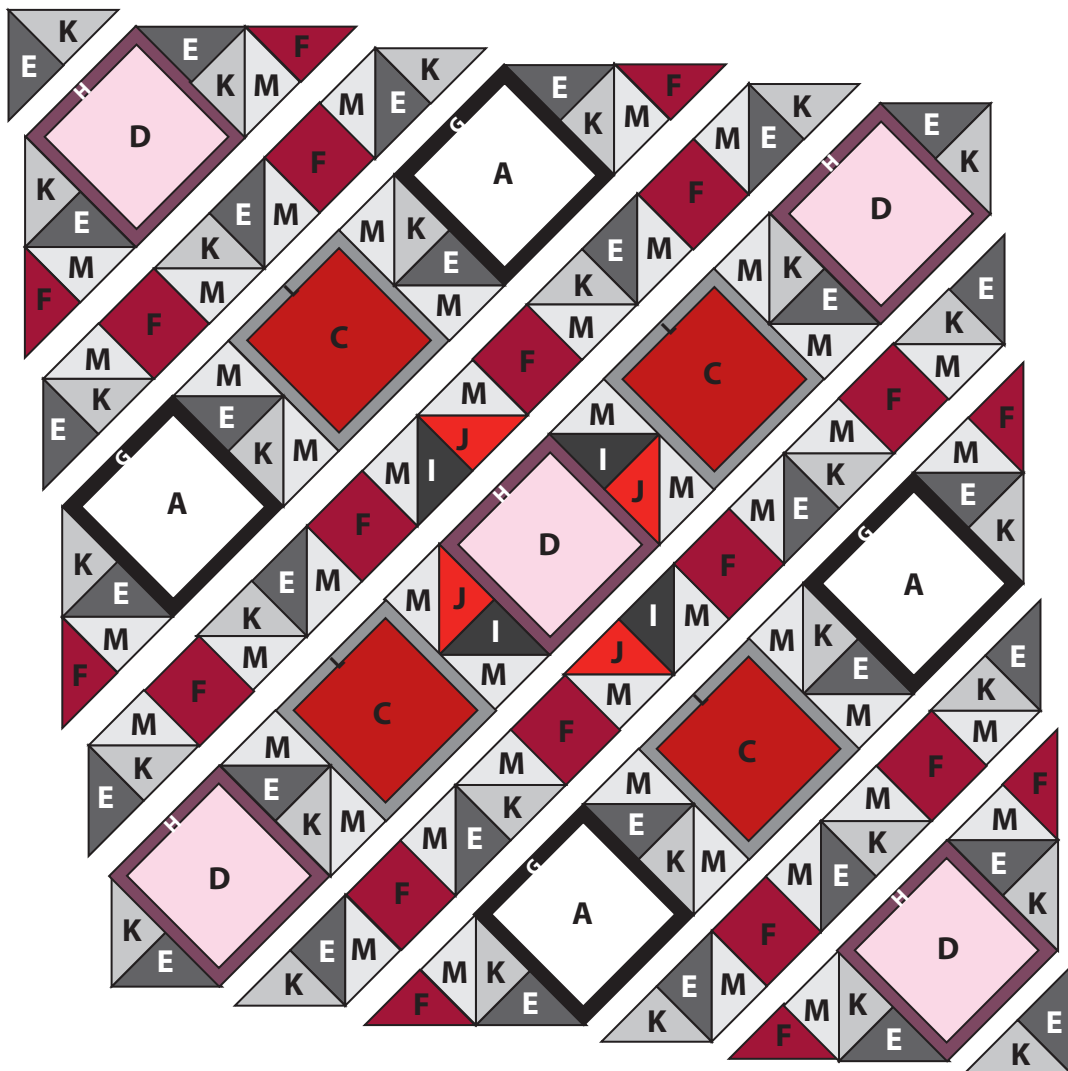
Block Assembly

1. Sew $1\frac{1}{2}$ " x $10\frac{1}{2}$ " Fabric H strips to opposite sides of a Fabric D square. Sew $1\frac{1}{2}$ " x $12\frac{1}{2}$ " Fabric H strips to the top and bottom of the Fabric D square. Repeat to make five D blocks total.
2. Repeat step 1 using the $1\frac{1}{2}$ " x $10\frac{1}{2}$ " Fabric G strips, the $1\frac{1}{2}$ " x $12\frac{1}{2}$ " Fabric G strips and the Fabric A squares to make four A blocks total.
3. Repeat step 1 using the $1\frac{1}{2}$ " x $10\frac{1}{2}$ " Fabric L strips, the $1\frac{1}{2}$ " x $12\frac{1}{2}$ " Fabric L strips and the Fabric C squares to make four C blocks total.

Quilt Assembly

4. Referring to the photo and quilt layout diagram for placement guidance, lay out the triangles and blocks in 11 diagonal rows as shown.
5. Join the triangles and blocks in each row.
6. Join the rows to complete the quilt top center.
7. Join the Fabric B strips end to end to make a long strip. Measure the length of the quilt top. Cut two Fabric B strips to this length and sew them to the sides of the quilt top. Measure the width of the quilt top. Cut two Fabric B strips to this length and sew them to the top and bottom of the quilt top to complete the outer border.
8. Layer the quilt top with batting and backing; baste. Quilt as desired. Using the $2\frac{1}{2}$ "-wide Fabric C strips, bind the edges to finish.

Quilt Layout Diagram



Hello Dahlia!



HDAH 441 R



HDAH 442 KW



HDAH 442 RK



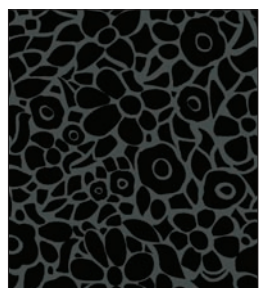
HDAH 442 WR



HDAH 443 K



HDAH 443 R



HDAH 444 K



HDAH 444 R



HDAH 446 K



HDAH 446 R



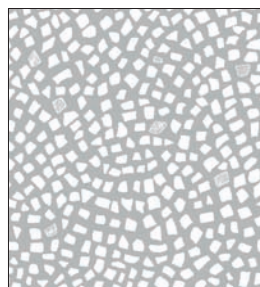
HDAH 446 S



HDAH 447 K



HDAH 447 R



HDAH 447 S



HDAH 445 W

P&B Textiles ♦ www.pbtex.com ♦ 800-351-9087

45-47 Washington St, Pawtucket, RI 02860 ♦ 237 W. 35th St, 11th floor, New York, NY 10001



100% cotton ♦ Cold wash & dry ♦ 43"/44" ♦ Colors may vary due to printing process ♦ 2/13

All fabrics shown at 40% scale.