

Le Jardin



Fabric Collection by P&B Textiles

FREE PATTERN

Ask for our fabrics
in your local
independent
quilt shop!



Garden Path quilt by Heidi Pridemore • Size: 67" x 83"



pbtex.com

Garden Path

Quilt by Heidi Pridemore using the Le Jardin fabric collection by P&B Textiles

Quilt Size: 67" x 83" • Block Size: 16" square

Yardage

Fabric A	JARD 303 AU-Stripe	4 yards
Fabric B	JARD 301 AU-Lg. Tossed Flowers	7/8 yard
Fabric C	JARD 304 K-Black Buds	7/8 yard
Fabric D	JARD 302 K-Black Paisley	1 1/2 yards
Fabric E	JARD 307 AU-Yellow Petals	1/4 yard
Fabric F	JARD 306 AU-Yellow Zigzag	1/3 yard
Fabric G	JARD 305 AU-Yellow Lace	3/8 yard
Fabric H	JARD 302 AU-Yellow Paisley	1/2 yard
Fabric I	CSNE W-White Solid	1 3/8 yard
Backing	any JARD fabric	5 1/4 yards

From fabric G (Yellow Lace), cut:

- (2) 4 7/8" x 42" squares; cut into (12) 4 7/8" squares. Cut the squares in half diagonally to yield 24 triangles.

From fabric H (Yellow Paisley), cut:

- (2) 6 3/4" x 42" strips; cut into (12) 6 3/4" squares. Cut the squares in half diagonally to yield 24 triangles.

From fabric I (White solid), cut:

- (11) 2 7/8" x 42" strips; cut into (144) 2 7/8" squares. Cut the squares in half diagonally to make (288) triangles.
- (7) 1 1/2" x 42" inner-border strips

Cutting

From fabric A (Stripe), fussy cut:

- (2) 7 1/2" x 85" lengthwise strips; centering the same stripe in the middle of each strip
- (2) 7 1/2" x 70" lengthwise strips; centering the same stripe as above in the middle of each strip

From fabric B (Large Tossed Flowers), cut:

- (3) 8 1/2" x 42" strips; cut into (12) 8 1/2" squares

From fabric C (Black Buds), cut:

- (2) 6 3/4" x 42" strips; cut into (12) 6 3/4" squares. Cut the squares in half diagonally to yield 24 triangles.
- (3) 2 1/2" x 42" strips; cut into (48) 2 1/2" squares

From fabric D (Black Paisley), cut:

- (2) 4 7/8" x 42" strips; cut into (12) 4 7/8" squares. Cut the squares in half diagonally to yield 24 triangles.
- (2) 2 1/2" x 42" strips; cut into (24) 2 1/2" squares
- (8) 2 1/2" x 42" binding strips
- (7) 2" x 42" middle-border strips

From fabric E (Yellow Petals), cut:

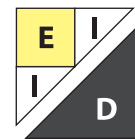
- (2) 2 1/2" x 42" strips; cut into (24) 2 1/2" squares

From fabric F (Yellow Zigzag), cut:

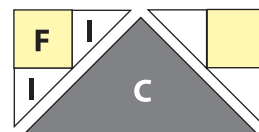
- (3) 2 1/2" x 42" strips; cut into (48) 2 1/2" squares

Block Assembly

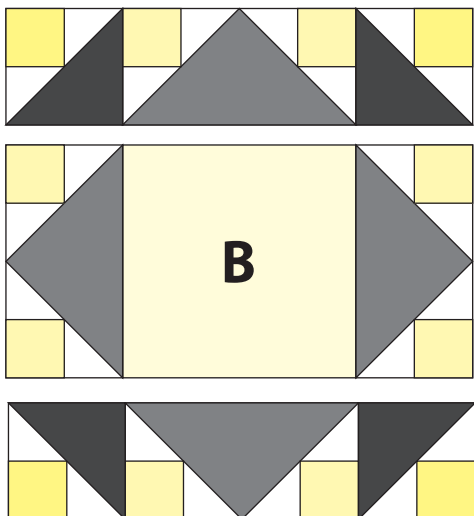
1. Sew fabric I triangles to adjacent sides of a fabric E square to make an E/I unit. Sew a fabric D triangle to the E/I unit to make a corner unit. The unit should measure 4 1/2" square. Make a total of 24 corner units.



2. Sew fabric I triangles to adjacent sides of a fabric F square to make an F/I unit. Make 48 units total. Sew two F/I units to the short sides of a fabric C triangle to make a side unit. The unit should measure 4 1/2" x 8 1/2". Make a total of 24 units.



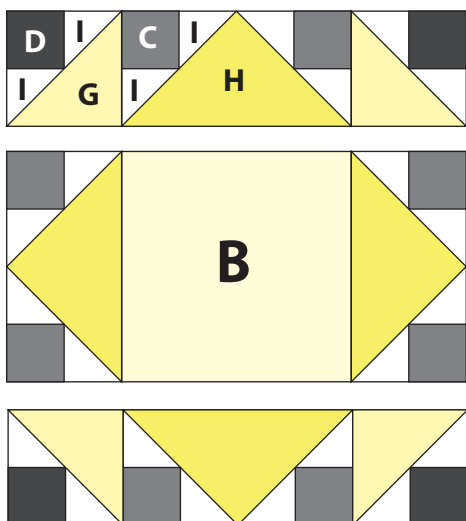
3. Lay out four corner units from step 1, four side units from step 2, and one fabric B square as shown. Join the pieces into rows and then join the rows to complete block 1. The block should measure $16\frac{1}{2}$ " square. Make a total of six blocks.



4. Repeat step 1 using the fabric D squares, fabric I triangles, and fabric G triangles to make 24 corner units.

5. Repeat step 2 using the fabric C squares, the remaining fabric I triangles, and the fabric H triangles to make 24 side units.

6. Lay out four corner units from step 4, four side units from step 5, and one fabric B square as shown. Join the pieces into rows and then join the rows to complete block 2. The block should measure $16\frac{1}{2}$ " square. Make a total of six blocks.



Quilt Top Assembly

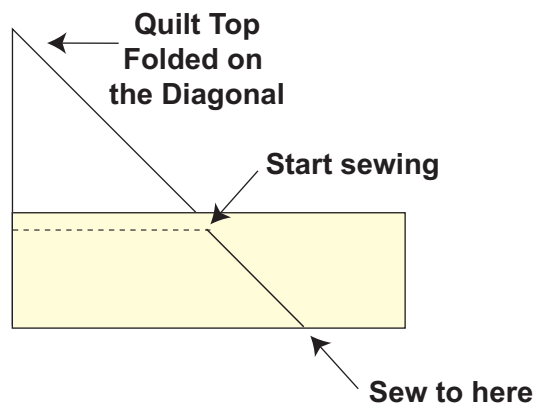
7. Lay out the blocks in four rows of three blocks each, alternating the blocks as shown in the photo. Join the blocks into rows and then join the rows to complete the quilt top center. The quilt center should measure $48\frac{1}{2}$ " x $64\frac{1}{2}$ ".

8. Join the fabric I $1\frac{1}{2}$ " x 42" strips end to end to make a long strip. From the long strip, cut two $64\frac{1}{2}$ "-long strips and sew them to the sides of the quilt top. From the remaining strip, cut two $50\frac{1}{2}$ "-long strips and sew them to the top and bottom of the quilt top to complete the inner border.

9. Join the fabric D 2" x 42" strips end to end to make a long strip. From the long strip, cut two $66\frac{1}{2}$ "-long strips and sew them to the sides of the quilt top. From the remaining strip, cut two $53\frac{1}{2}$ "-long strips and sew them to the top and bottom of the quilt top to complete the middle border.

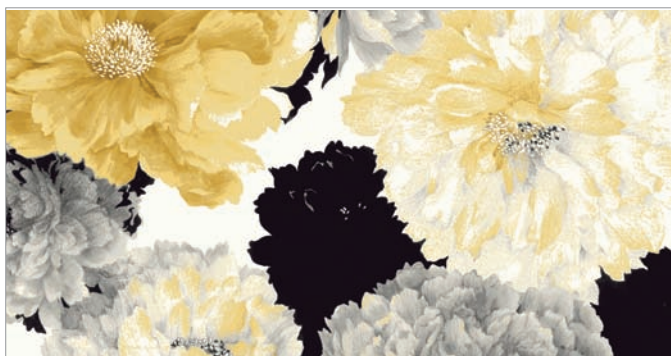
10. Referring to the photo for placement guidance, center and pin fabric A strips to each side of the quilt top. Make sure to pin the same edge of each strip onto the top. Sew the strips starting and stopping $\frac{1}{4}$ " from the raw edge and backstitch. **Do not trim the excess.**

11. To miter each corner, fold the quilt top diagonally with wrong sides together. This should align the strips from adjacent sides. Starting at the sewn seam as shown below, draw a 45° line to the edge of the strip. Sew on the drawn line. Trim the excess fabric leaving a $\frac{1}{4}$ " seam allowance. Repeat with the remaining corners of the quilt top.



12. Layer the quilt top with batting and backing; baste. Quilt as desired. Using the fabric D $2\frac{1}{2}$ "-wide binding strips, bind the edges to finish.

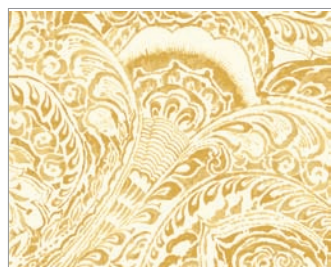
Le Jardin



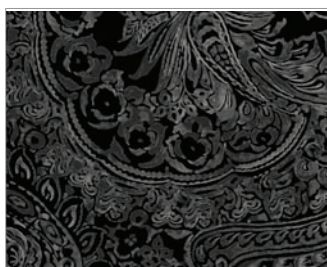
JARD 301 AU



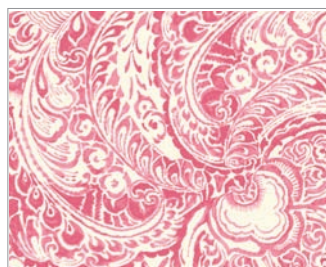
JARD 301 P



JARD 302 AU



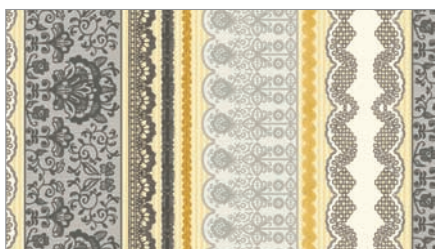
JARD 302 K



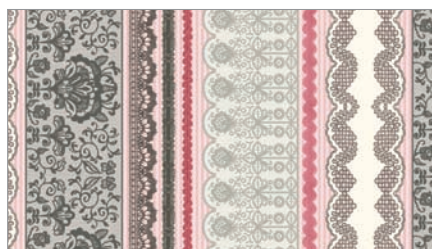
JARD 302 P



JARD 302 WK



JARD 303 AU - 26" REPEAT



JARD 303 P



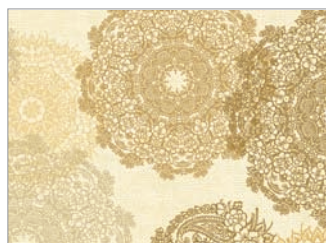
JARD 303 S



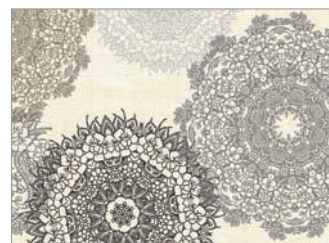
JARD 304 K



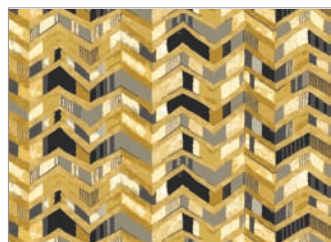
JARD 304 WK



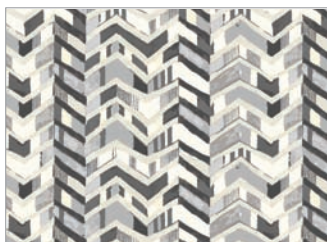
JARD 305 AU



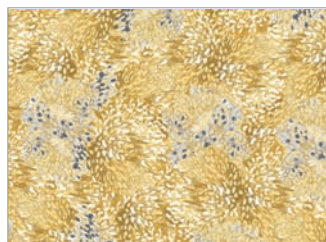
JARD 305 K



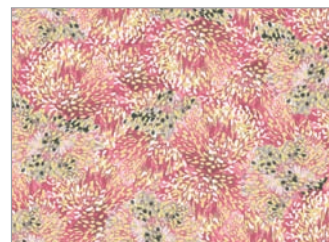
JARD 306 AU



JARD 306 S



JARD 307 AU



JARD 307 P

P&B Textiles ♦ www.pbtex.com ♦ 800-351-9087

45-47 Washington St, Pawtucket, RI 02860 ♦ 237 W. 35th St, 11th floor, New York, NY 10001



100% cotton ♦ Cold wash & dry ♦ 43"/44" ♦ Colors may vary due to printing process ♦ 2/13

All fabrics shown at 50% scale.