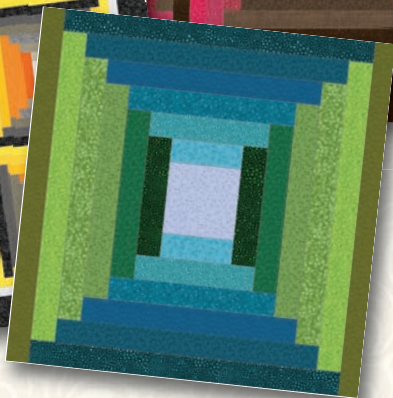


Bear Essentials

2

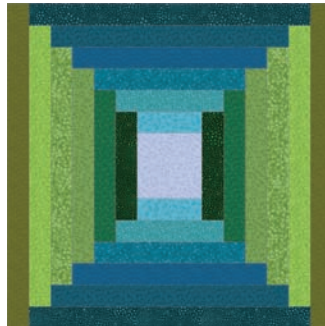


RB
&
BASICS

Bear Essentials ₂

Gradiance quilts by Nancy Mahoney
using the *Bear Essentials 2* fabric collection
for P&B Textiles

Size: 68" x 83"



Brown/Pink Quilt

- A – ESS2 562 E
- B – ESS2 567 E
- C – ESS2 563 D
- D – ESS2 565 E
- E – ESS2 562 R
- F – ESS2 566 Z
- G – ESS2 567 R
- H – ESS2 567 Z
- I – ESS2 566 R
- J – ESS2 565 Z
- K – ESS2 565 F
- L – ESS2 568 Z
- M – ESS2 564 F

Green/Teal Quilt

- A – ESS2 567 LB
- B – ESS2 569 T
- C – ESS2 568 G
- D – ESS2 562 T
- E – ESS2 564 G
- F – ESS2 566 T
- G – ESS2 567 G
- H – ESS2 570 B
- I – ESS2 563 G
- J – ESS2 564 T
- K – ESS2 566 G
- L – ESS2 568 T
- M – ESS2 570 A

Black/Red Quilt

- A – ESS2 565 S
- B – ESS2 566 E
- C – ESS2 563 D
- D – ESS2 570 E
- E – ESS2 562 R
- F – ESS2 563 S
- G – ESS2 567 R
- H – ESS2 569 S
- I – ESS2 565 R
- J – ESS2 566 S
- K – ESS2 563 R
- L – ESS2 565 K
- M – ESS2 566 R

Black/Yellow Quilt

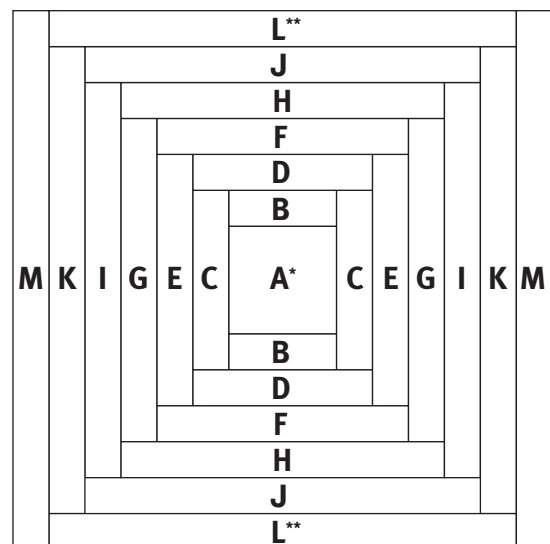
- A – ESS2 565 S
- B – ESS2 566 E
- C – ESS2 562 O
- D – ESS2 570 E
- E – ESS2 564 O
- F – ESS2 563 S
- G – ESS2 566 O
- H – ESS2 569 S
- I – ESS2 565 Y
- J – ESS2 566 S
- K – ESS2 570 Y
- L – ESS2 563 K
- M – ESS2 569 Y

QUILT YARDAGE REQUIREMENTS

Fabric A *	5/8 yard
Fabric B	1/4 yard
Fabric C	3/8 yard
Fabric D	3/8 yard
Fabric E	1/2 yard
Fabric F	1/2 yard
Fabric G	5/8 yard
Fabric H	5/8 yard
Fabric I	3/4 yard
Fabric J	3/4 yard
Fabric K	7/8 yard
Fabric L **	2 1/4 yards
Fabric M	1 yard
Backing	5 1/4 yards of any ESS2 fabric

* also inner border

** also outer border/binding



BLOCK DIAGRAM

CUTTING

All strips are cut across the width of the fabric.

From fabric A, cut:

- (2) $3\frac{1}{2}$ " x 42" strip; cut into (20) $3\frac{1}{2}$ " squares
- (7) $1\frac{1}{2}$ " x 42" strips. Piece strips; cut (2) $1\frac{1}{2}$ " x $75\frac{1}{2}$ " side inner-border strips and (2) $1\frac{1}{2}$ " x $62\frac{1}{2}$ " top and bottom inner-border strips.

From fabric B, cut:

- (2) $3\frac{1}{2}$ " x 42" strip; cut into (20) $1\frac{1}{2}$ " x $3\frac{1}{2}$ " rectangles

From each of fabric C and fabric D, cut:

- (2) $5\frac{1}{2}$ " x 42" strip; cut into (40) $1\frac{1}{2}$ " x $5\frac{1}{2}$ " rectangles (80 total)

From each of fabric E and fabric F, cut:

- (2) $7\frac{1}{2}$ " x 42" strip; cut into (40) $1\frac{1}{2}$ " x $7\frac{1}{2}$ " rectangles (80 total)

From each of fabric G and fabric H, cut:

- (2) $9\frac{1}{2}$ " x 42" strip; cut into (40) $1\frac{1}{2}$ " x $9\frac{1}{2}$ " rectangles (80 total)

From each of fabric I and fabric J, cut:

- (2) $11\frac{1}{2}$ " x 42" strip; cut into (40) $1\frac{1}{2}$ " x $11\frac{1}{2}$ " rectangles (80 total)

From fabric K, cut:

- (2) $13\frac{1}{2}$ " x 42" strip; cut into (40) $1\frac{1}{2}$ " x $13\frac{1}{2}$ " rectangles

From fabric L, cut:

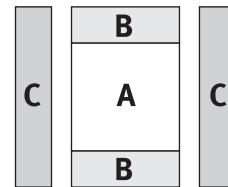
- (2) $13\frac{1}{2}$ " x 42" strip; cut into (40) $1\frac{1}{2}$ " x $13\frac{1}{2}$ " rectangles
- (8) $3\frac{1}{2}$ " x 42" strips. Piece strips; cut (2) $3\frac{1}{2}$ " x $77\frac{1}{2}$ " side outer-border strips and (2) $3\frac{1}{2}$ " x $68\frac{1}{2}$ " top and bottom outer-border strips.
- (8) $2\frac{1}{4}$ " x 42" binding strips

From fabric M, cut:

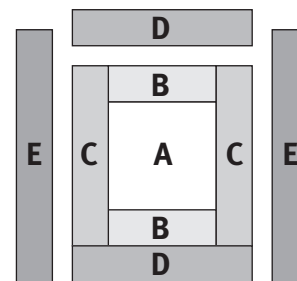
- (2) $15\frac{1}{2}$ " x 42" strip; cut into (40) $1\frac{1}{2}$ " x $15\frac{1}{2}$ " rectangles

BLOCK ASSEMBLY

1. Sew two fabric B rectangles to opposite sides of one fabric A square. Then sew two fabric C rectangles to opposite sides of the square to make one center unit. Press all seam allowances toward the just-added rectangles. The unit should measure $5\frac{1}{2}$ " square. Make a total of 20 center units.



2. Sew two fabric D rectangles to opposite sides of one center unit. Then sew two fabric E rectangles to opposite sides of the unit. Press all seam allowances toward the just-added rectangles. The unit should measure $7\frac{1}{2}$ " square. Make a total of 20 units.



3. In the same way, continue adding rectangles in alphabetical order ending with the fabric M rectangles as shown in the block diagram. The block should measure $15\frac{1}{2}$ " square. Make a total of 20 blocks.

QUILT ASSEMBLY

4. Referring to the quilt image for placement guidance, lay out the blocks in five rows of four blocks each. Join the blocks into rows; join the rows to complete the quilt center.

5. Sew the fabric A inner-border strips to the sides, top, and bottom of the quilt center.

6. Sew the fabric K outer-border strips to the sides, top, and bottom of the quilt center.

7. Layer the quilt top with batting and backing; baste. Quilt as desired. Using the fabric L $2\frac{1}{4}$ "-wide binding strips, bind the edges to finish.