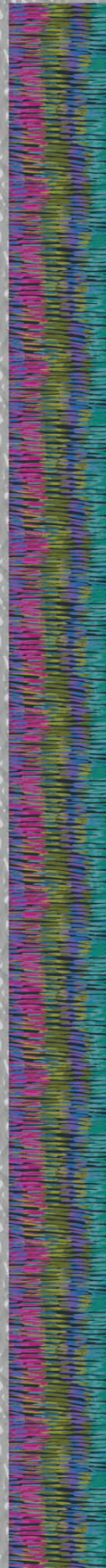


IN THE FUTURE OF FASHION



INTERSECTIONS

Intersections quilt by Heidi Pridemore
using the *Intersections* fabric collection
by Lily Martine Baxter for P&B Textiles

Size: 58" x 74"

YARDAGE

Fabric A	INTE 841 K	2 1/8 yards
Fabric B	INTE 845 F	1/4 yard
Fabric C	INTE 842 S	1/2 yard
Fabric D	INTE 844 MU	5/8 yard
Fabric E	INTE 845 AU	1/4 yard
Fabric F	INTE 843 S	2 1/4 yards
Fabric G	INTE 843 K	5/8 yard
Backing	any INTE fabric	3 3/4 yards

CUTTING

Cut strips across the width of fabric except where noted for Fabric A and Fabric F below.

Fabric A (INTE 841 K), cut:

- (2) 8 1/2" x 70 1/2" lengthwise strips

Fabric B (INTE 845 F), cut:

- (2) 6 7/8" x 42" strips; cut into (11) 6 7/8" squares

Fabric C (INTE 842 S), cut:

- (2) 6 7/8" x 42" strips; cut into (11) 6 7/8" squares
- (1) 7 1/4" x 42" strip; cut into (5) 7 1/4" squares

Fabric D (INTE 844 MU), cut:

- (4) 4 1/2" x 42" strips;
piece the strips and cut (2) 4 1/2" x 62 1/2" strips

Fabric E (INTE 845 AU), cut:

- (1) 7 1/4" x 42" strip; cut into (5) 7 1/4" squares

Fabric F (INTE 843 S), cut:

- (3) 2 1/2" x 42" strips;
piece the strips and cut (2) 2 1/2" x 58 1/2" strips
- (8) 2 1/2" x 70 1/2" lengthwise strips
- From the remaining fabric, cut:
 - (2) 6 1/2" wide x 8 1/2" high strips
 - (4) 2 1/2" wide x 6 1/2" high strips
 - (4) 4 1/2" squares

Fabric G (INTE 843 K), cut:

- (7) 2 1/2" x 42" binding strips

QUILT ASSEMBLY

1. Layer a Fabric B square and a Fabric C 6 7/8" square, right sides together. Draw a diagonal line from corner to corner on the wrong side of the top square. Sew 1/4" from each side of the drawn line. Cut the squares apart on the drawn line to make two half-square-triangle units. The units should measure 6 1/2" square. Make a total of 22 B/C units.



2. Layer a Fabric C 7 1/4" square and a Fabric E square, right sides together. Draw a diagonal line from corner to corner on the wrong side of the top square. Sew 1/4" from each side of the drawn line. Cut the squares apart on the drawn line to make two half-square-triangle units. The units should measure 6 7/8" square. Make a total of 10 C/E units.

3. Layer two C/E units right sides together, making sure the center seam is going in the same direction on both units and a Fabric C triangle is on top of a Fabric E triangle. On the wrong side of the top unit, draw a diagonal line from corner to corner, across the sewn seam. Sew 1/4" from each side of the drawn line. Cut on the drawn line to make two quarter-square-triangle units. Make a total of ten C/E quarter-square-triangle units (one is extra).



4 Join 11 B/C units to make a strip. Then sew Fabric F 2 1/2" x 6 1/2" strips to both ends of the strip to make one B/C column. Repeat to make a second B/C column.

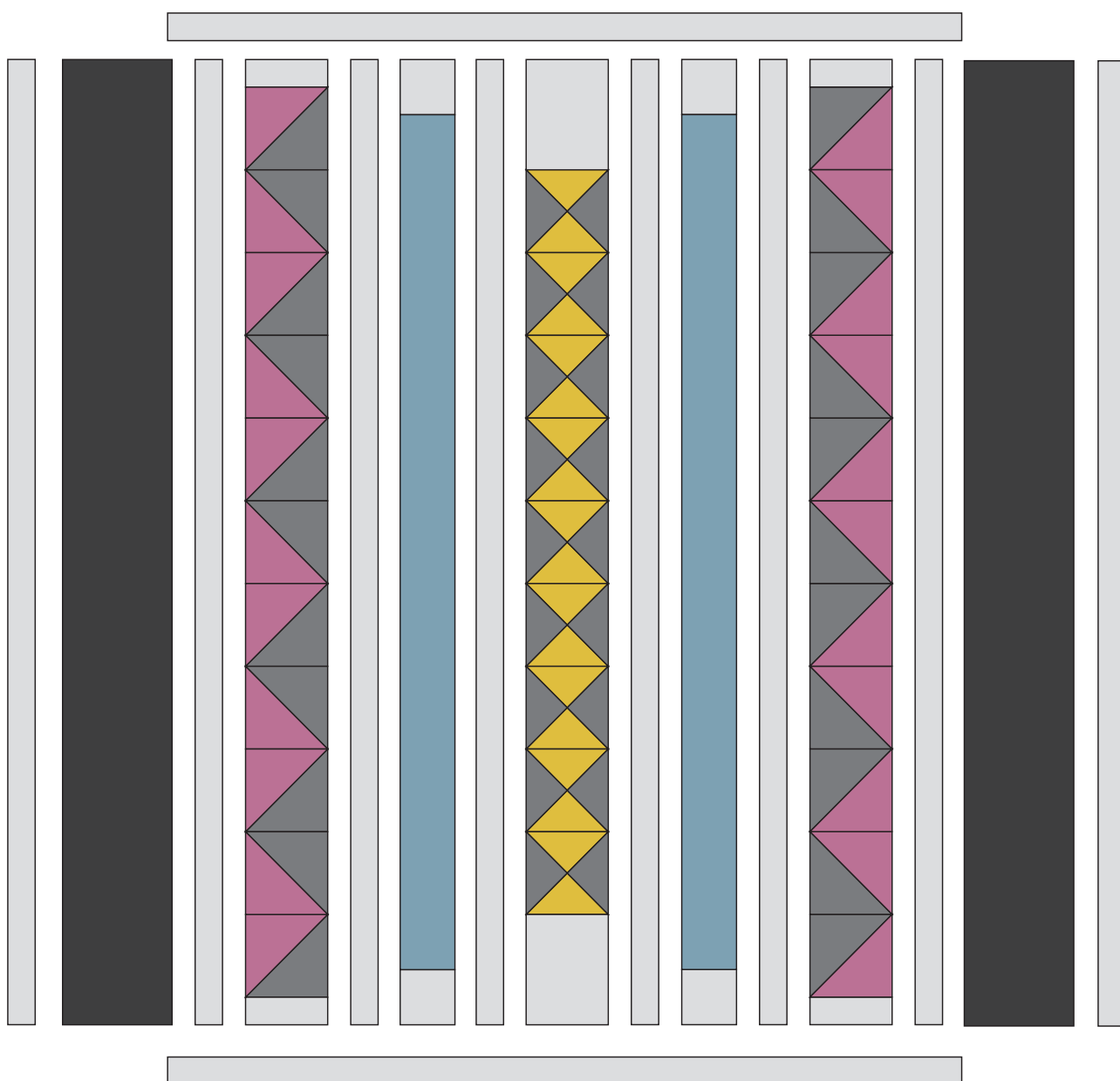
5. Join nine C/E quarter-square-triangles units to make a strip. Then sew Fabric F $6\frac{1}{2}$ " x $8\frac{1}{2}$ " strips to both ends of the strip to make one C/E column.

6. Sew Fabric F $4\frac{1}{2}$ " squares to both ends of a Fabric D strip to make a D column. Repeat to make a second D column.

7. Lay out the Fabric F $70\frac{1}{2}$ "-long strips, the Fabric A strips, the B/C columns, the D columns, and the C/E column as shown in the quilt layout diagram. Join the strips and columns to make the quilt top center.

8. Sew a Fabric F $58\frac{1}{2}$ "-long strip to the top and bottom of the quilt top center.

9. Layer the quilt top with batting and backing; baste. Quilt as desired. Using the Fabric G binding strips, bind the edges to finish.



Quilt Layout Diagram

INTERSECTIONS

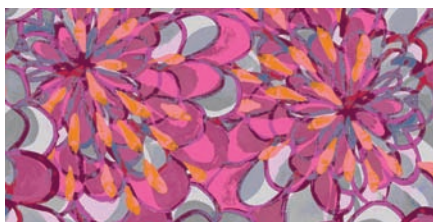
Fabric Collection by **Lily Martine Baxter**



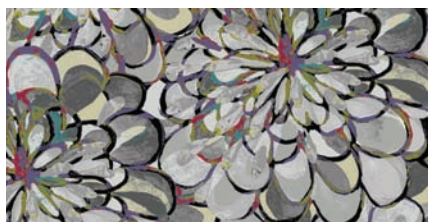
INTE 841 K



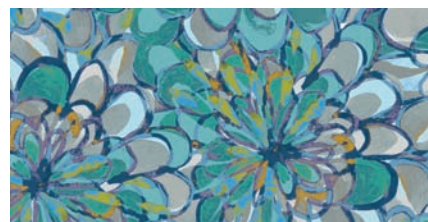
INTE 841 S – shown at 15% scale



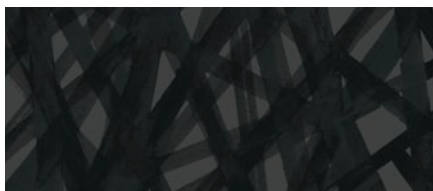
INTE 842 P



INTE 842 S



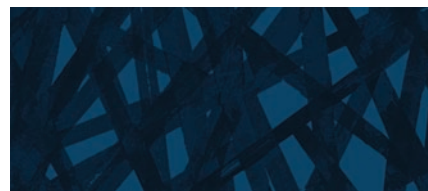
INTE 842 T



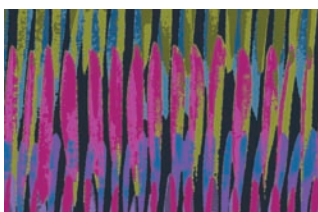
INTE 843 K



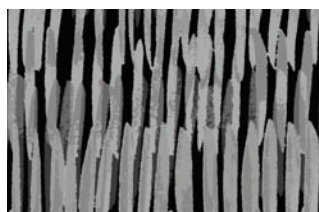
INTE 843 S



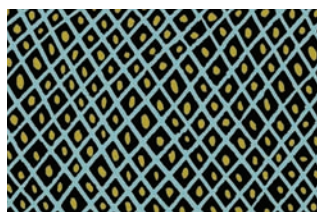
INTE 843 T



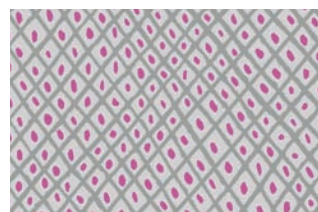
INTE 844 MU



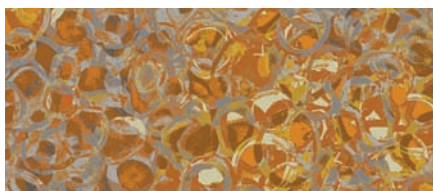
INTE 844 S



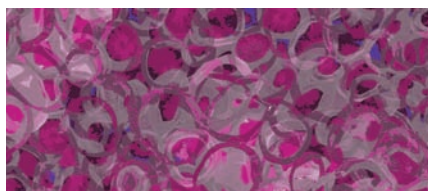
INTE 846 K



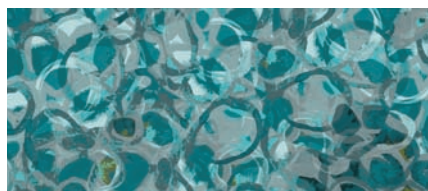
INTE 846 S



INTE 845 AU



INTE 845 F



INTE 845 T



P&B Textiles ♦ www.pbtex.com ♦ 800-351-9087

45-47 Washington St, Pawtucket, RI 02860 ♦ 237 W. 35th St, 11th floor, New York, NY 10001

△ 100% cotton ♦ Cold wash & dry ♦ 43"/44" ♦ Colors may vary due to printing process

All fabrics shown at 50% scale.