

wander BLOSSOMS



wanderBLOSSOMS

Jewel Blossoms quilt by Nancy Mahoney
using the *Wander Blossoms* fabric collection
by Danielle Donaldson for P&B Textiles

Size: 51" x 62"

yardage

WAND 395 YG	5/8 yard
WAND 397 MU	5/8 yard
WAND 398 MU	1/2 yard
WAND 399 W	5/8 yard
WAND 401 YG	5/8 yard
WAND 400 B	1/2 yard
WAND 400 O	1/8 yard
WAND 402 OP	7/8 yard
WAND 403 B	1/8 yard
WAND 403 G	1/8 yard
WAND 403 O	1/8 yard
SUEM 300 BG	1/8 yard
SUEM 300 V	1/8 yard
CSNE W	1 7/8 yards
Backing: 3 1/4 yards of any WAND fabric	

cutting

From each of **WAND 395 YG**, **397 MU**, **399 W**,
and **401 YG**, cut:

- (5) 8 1/2" **A** squares (20 total)

From each of **WAND 400 O**, **403 B**, **403 G**,
403 O, **SUEM 300 BG**, and **SUEM 300 V**, cut:

- (5) 3 1/2" **B** squares (30 total)

From **WAND 402 OP**, cut:

- (3) 8 1/2" x 42" strips; cut into
(49) 2" x 8 1/2" **C** rectangles

From **CSNE W**, cut:

- (3) 8 1/2" x 42" strips; cut into
(98) 1 1/4" x 8 1/2" **D** rectangles
- (16) 2" x 42" strips; cut into
(316) 2" **E** squares

From **WAND 400 B**, cut:

- (6) 2 1/2" x 42" outer-border strips

From **WAND 398 MU**, cut:

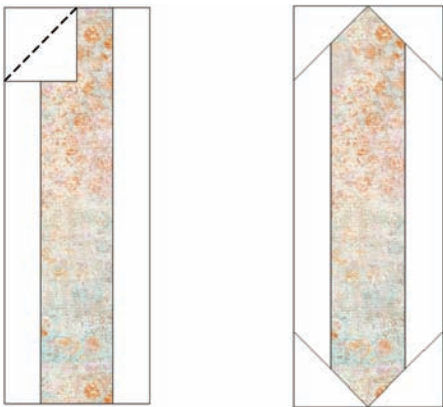
- (6) 2 1/4" x 42" binding strips



assembly

1. Sew white D rectangles to opposite sides of each C rectangle to make a pieced strip.

2. Draw a diagonal line from corner to corner on the wrong side of each white E square. Place a marked square on one corner of a pieced strip, right sides together. Sew on the marked line. Trim the excess corner fabric, leaving a $\frac{1}{4}$ " seam allowance. In the same way, sew marked squares to the remaining three corners of the strip to complete a sashing strip. Make a total of 49 sashing strips.



3. Place a marked white square from step 2 on one corner of a B square. Sew on the marked line. Trim the excess corner fabric, leaving a $1\frac{1}{4}$ " seam allowance. In the same way, sew marked squares to the remaining three corners of the square to complete a sashing block. Make a total of 30 sashing blocks.



4. To make the block rows, join five sashing strips and four A squares, referring to the cover image for placement guidance. Make five block rows.

5. To make the sashing rows, join five sashing blocks and four sashing strips as shown in the cover image. Make six sashing rows.

6. Join the block rows and sashing rows, beginning and ending with a sashing row as shown in the cover image.

7. Join the 400 B outer-border strips together end to end. From the pieced strip, cut two $58\frac{1}{2}$ "-long strips and sew them to opposite sides of the quilt top. From the remaining pieced strip, cut two $51\frac{1}{2}$ "-long strips and sew them to the top and bottom of the quilt top to complete the outer border.

8. Layer the quilt top with batting and backing; baste. Quilt as desired. Using the 398 MU binding strips, bind the edges to finish.





WAND 395 YG



WAND 396 W



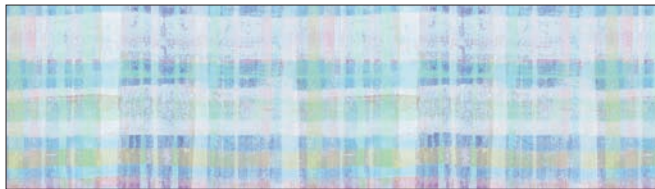
WAND 397 MU



WAND 399 W



WAND 401 YG



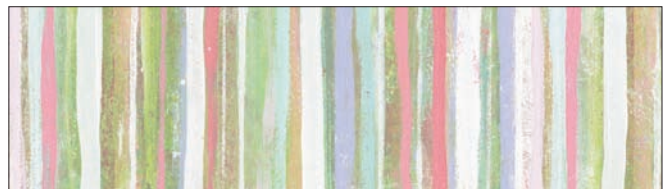
WAND 400 B



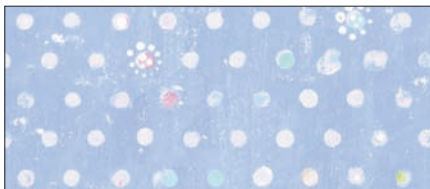
WAND 400 O



WAND 402 OP



WAND 398 MU



WAND 403 B — 50% scale



WAND 403 G — 50% scale



WAND 403 O — 50% scale



P&B Textiles ♦ www.pbtex.com ♦ 800-351-9087

45-47 Washington St, Pawtucket, RI 02860 ♦ 237 W. 35th St, 11th floor, New York, NY 10001

△ 100% cotton ♦ Cold wash & dry ♦ 43"/44" ♦ Colors may vary due to printing process

All fabrics shown at 25% scale except where indicated otherwise.