

love lives here



Fabric Collection by P. Carter Carpin

FREE PATTERN
Ask for our fabrics
in your local
independent
quilt shop!



Love Squared quilt by Nancy Mahoney

Size: 60" square



pbtex.com



Love Squared



Quilt by Nancy Mahoney

using the *Love Lives Here* fabric collection by P. Carter Carpin for P&B Textiles

Size: 60" square

Yardage

Fabric A:	LOVE 492 C	5/8 yard
Fabric B:	LOVE 492 T	1/2 yard
Fabric C:	LOVE 493 X	1 1/8 yard
Fabric D:	LOVE 494 O	1/3 yard
Fabric E:	LOVE 495 B	5/8 yard
Fabric F:	LOVE 498 Z	1/3 yard
Fabric G:	LOVE 500 B	5/8 yard
Fabric H:	LOVE 499 LT	1/2 yard
Fabric I:	LOVE 499 X	1/2 yard
Fabric J:	LOVE 499 Z	1/3 yard

BACKING: 3 3/4 yards of any *LOVE* fabric

Cutting

All strips are cut across the width of fabric (wof).

From fabric A (LOVE 492 C), cut:

- (2) 8" x wof strips; cut into (8) 8" squares

From fabric B (LOVE 492 T), cut:

- (2) 7 1/2" x wof strips; cut into (8) 7 1/2" squares

From fabric C (LOVE 493 X), cut:

- (6) 5 1/2" x wof outer-border strips

From fabric D (LOVE 494 O), cut:

- (4) 2" x wof strips; cut into (8) 2" x 9" rectangles and (8) 2" x 7 1/2" rectangles

From fabric E (LOVE 495 B), cut:

- (7) 2 1/4" x wof binding strips

From fabric F (LOVE 498 Z), cut:

- (4) 2" x wof strips; cut into (8) 2" x 10 1/2" rectangles and (8) 2" x 9" rectangles

From fabric G (LOVE 500 B), cut:

- (12) 1 1/2" x wof strips; cut into (16) 1 1/2" x 12 1/2" rectangles and (16) 1 1/2" x 10 1/2" rectangles

From fabric H (LOVE 499 LT), cut:

- (8) 1 1/2" x wof strips; cut into (8) 1 1/2" x 10" rectangles, (16) 1 1/2" x 9" rectangles, and (8) 1 1/2" x 8" rectangles

From fabric I (LOVE 499 X), cut:

- (5) 3" x wof strips; cut into (8) 3" x 10" rectangles and (8) 3" x 12 1/2" rectangles

From fabric J (LOVE 499 Z), cut:

- (5) 1 1/2" x wof inner-border strips



Block A Assembly



1. Sew a fabric D 2" x 7 1/2" rectangle to the left side of each fabric B square. Then sew a fabric D 2" x 9" rectangle to the top edge to make eight units.
2. Sew a fabric H 1 1/2" x 9" rectangle to the left side of each unit from step 1. Then sew a fabric H 1 1/2" x 10" rectangle to the top edge of each unit.
3. Sew a fabric I 3" x 10" rectangle to the left side of each unit from step 2. Then sew a fabric I 3" x 12 1/2" rectangle to the top edge of each unit to make eight blocks. The blocks should measure 12 1/2" square.

Block B Assembly



4. Sew a fabric H 1 1/2" x 8" rectangle to the right side of each fabric A square. Then sew a fabric H 1 1/2" x 9" rectangle to the bottom edge to make eight units.
5. Sew a fabric F 2" x 9" rectangle to the right side of each unit from step 4. Then sew a fabric F 2" x 10 1/2" rectangle to the bottom edge of each unit.
6. Sew fabric G 1 1/2" x 10 1/2" rectangles to opposite sides of each unit from step 5. Then sew fabric G 1 1/2" x 12 1/2" rectangles to the top and bottom edges of each unit to make eight blocks. The blocks should measure 12 1/2" square.

Quilt Assembly

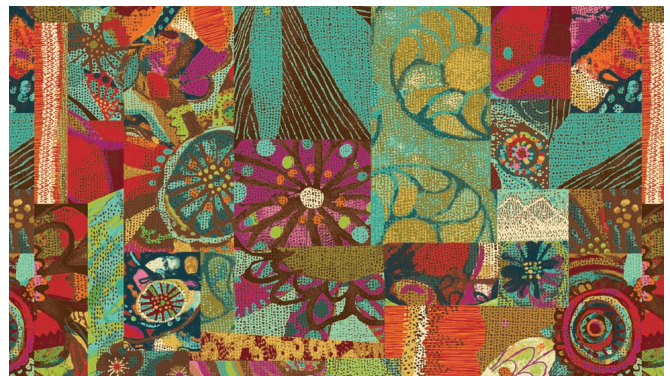
7. Referring to the photo for placement guidance, lay out the A and B blocks in four rows of four blocks each, alternating the blocks as shown. Join the blocks into rows and then join the rows.
8. Join the fabric J 1 1/2"-wide strips end to end to make a long strip. Measure the length of the quilt top. Cut two strips to this length and sew them to the sides of the quilt top. Measure the width of the quilt top. Cut two strips to this length and sew them to the top and bottom of the quilt top to complete the inner border.
9. Repeat step 8, using fabric C strips for the outer border.
10. Layer the quilt top with batting and backing; baste. Quilt as desired. Using the fabric E binding strips, bind the edges to finish.

love lives here

Fabric Collection by P. Carter Carpin



LOVE 491 MU – SHOWN SELVAGE TO SELVAGE – 24" REPEAT



LOVE 497 MU – SHOWN SELVAGE TO SELVAGE – 24" REPEAT



LOVE 492 C – 25% SCALE



LOVE 492 T – 25% SCALE



LOVE 493 X – 25% SCALE



LOVE 493 Z – 25% SCALE



LOVE 494 B



LOVE 494 O



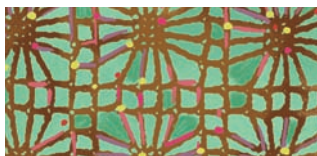
LOVE 495 B



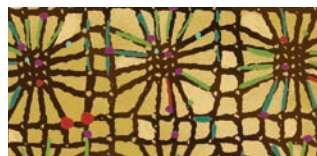
LOVE 495 O



LOVE 496 O



LOVE 496 T



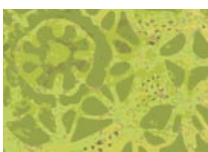
LOVE 496 Y



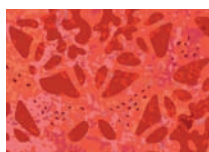
LOVE 498 Z



LOVE 500 B



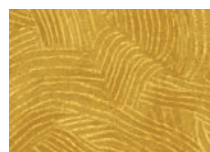
LOVE 500 G



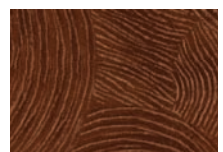
LOVE 500 R



LOVE 499 RV



LOVE 499 X



LOVE 499 Z

P&B Textiles ♦ 1580 Gilbreth Road, Burlingame, CA 94010 ♦ 800-852-2327

For wholesale orders: 14683 Midway Road, Addison, TX 75001 ♦ 800-351-9087 ♦ www.pbtex.com



100% cotton ♦ Cold wash & dry ♦ 43"/44" ♦ Colors may vary due to printing process ♦ 6/12

All fabrics shown at 50% scale except large scale designs which are shown at 25% scale.