

# Le Jardin

FREE PATTERN  
Ask for our fabrics  
in your local  
independent  
quilt shop!

Fabric Collection by P&B Textiles



*Le Jardin Gardens* quilt by Nancy Mahoney • Size: 63" square



[pbtex.com](http://pbtex.com)



# Le Jardin Gardens

Quilt by Nancy Mahoney using the *Le Jardin* fabric collection by P&B Textiles • Quilt Size: 63" square

## Sardage

Fabric A	JARD 301 P	1 1/4 yards
Fabric B	JARD 302 K	1 yard
Fabric C	JARD 302 P	1/2 yard
Fabric D	JARD 302 WK	1/3 yard
Fabric E	JARD 303 P	1 5/8 yards
Fabric F	JARD 304 K	1/2 yard
Fabric G	JARD 306 S	1 yard
Fabric H	JARD 307 P	1/4 yard
Fabric I	CSNE W (white solid)	3/4 yard
Backing	any JARD fabric	4 yards

- Omnigrid #98L ruler

(or other quarter-square-triangle ruler)

## Cutting

**From fabric A (JARD 301 P), cut:**

- (7) 5 1/2" x 42" outer-border strips

**From fabric B (JARD 302 K), cut:**

- (4) 2" x 42" strips; cut into (72) 2" squares
- (6) 1 1/4" x 42" inner-border strips
- (7) 2 1/4" x 42" binding strips

**From fabric C (JARD 302 P), cut:**

- (2) 6 1/2" x 42" strips; cut 1 of the strips into (18) 2" x 6 1/2" rectangles

**From fabric D (JARD 302 WK), cut:**

- (1) 3 1/2" x 42" strip
- (2) 2" x 42" strip

**From fabric E (JARD 303 P):**

Using the quarter-square-triangle ruler, cut 16 triangles in matching sets of (4) *identical* triangles, making sure the long side of each triangles measures 13 1/4"

**From fabric F (JARD 304 K), cut:**

- (6) 2" x 42" strips; cut 2 of the strips into (36) 2" squares

**From fabric G (JARD 306 S), cut:**

- (2) 18 1/4" squares; cut the squares into quarters diagonally to yield 8 side triangles
- (2) 9 1/2" squares; cut the squares in half diagonally to yield 4 corner triangles

**From fabric H (JARD 307 P), cut:**

- (1) 3 1/2" x 42" strip

**From fabric I (CSNE W), cut:**

- (4) 5" x 42" strips; cut into (72) 2" x 5" rectangles

## Block Assembly

1. Sew a fabric D 2"-wide strip to each long side of a fabric H strip to make a strip set. Cut the strip set into nine 3 1/2"-wide segments.

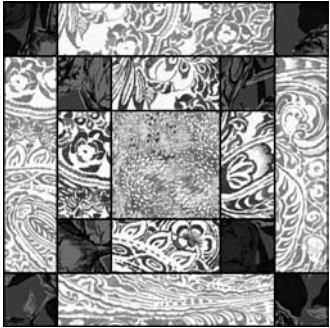
2. Sew a fabric F 2"-wide strip to each long side of a 3 1/2"-wide fabric D strip to make a strip set. Cut the strip set into (18) 2"-wide segments.

3. Lay out two segments from step 2 and one segment from step 1 in a nine-patch arrangement. Join the pieces to make a center unit. The unit should measure 6 1/2" square. Make a total of nine units.



4. Sew a fabric F 2"-wide strip to each long side of a 6 1/2"-wide fabric C strip to make a strip set. Cut the strip set into (18) 2"-wide segments.

5. Sew fabric C rectangles to opposite sides of a center unit. Sew segments from step 4 to the top and bottom of the unit to make a  $9\frac{1}{2}'' \times 9\frac{1}{2}''$  unit. Make a total of nine units.

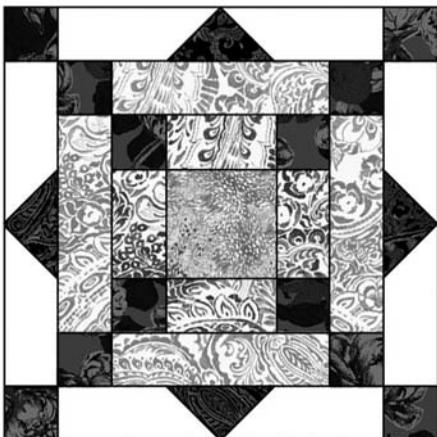


6. Draw a diagonal line from corner to corner on the wrong side of each fabric B square. Place a marked square on one end of a fabric I rectangle. Sew along the line and trim the corner fabric leaving a  $\frac{1}{4}''$  seam allowance. Make 36 units and 36 reversed units.

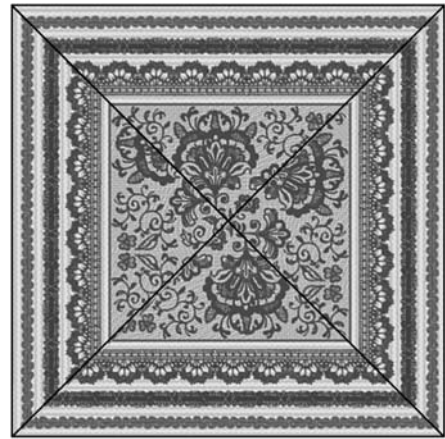


7. Using a unit and a reversed unit from step 6 and matching the black triangles, join the units as shown in the block diagram to make a pieced strip. The strip should measure  $2'' \times 9\frac{1}{2}''$ . Make 36 strips.

8. Lay out four pieced strips from step 7, four fabric F squares, and one unit from step 5 in three rows as shown in the block diagram. Join the pieces into rows and then join the rows to complete block 1. The block should measure  $12\frac{1}{2}''$  square. Make a total of nine blocks.



9. Join four matching fabric E triangles as shown to make block 2. The block should measure  $12\frac{1}{2}''$  square. Make four of these blocks.



## Quilt Assembly

10. Referring to the photo for placement guidance, lay out the blocks, fabric G side triangles, and fabric G corner triangles in diagonal rows, making sure to orient the side and corner triangles as shown. Join the pieces into rows and then join the rows.

11. Join the fabric B  $1\frac{1}{4}''$ -wide strips end to end to make a long strip. Measure the length of the quilt top. From the long strip, cut two fabric B strips to this length and sew them to the sides of the quilt top. Measure the width of the quilt top. From the remaining strip, cut two fabric B strips to this length and sew them to the top and bottom of the quilt top to complete the inner border.

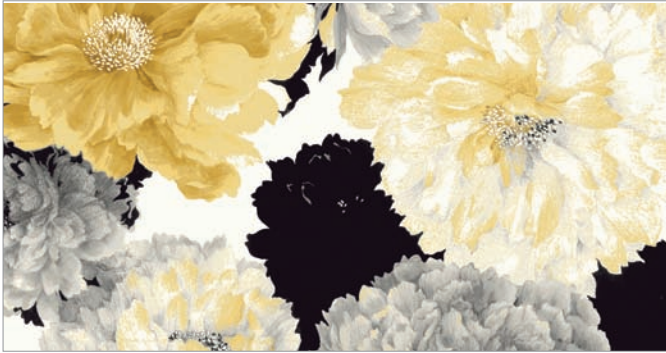
12. Repeat step 11, using the fabric A strips for the outer border.

13. Layer the quilt top with batting and backing; baste. Quilt as desired. Using the fabric B  $2\frac{1}{4}''$ -wide strips, bind the edges to finish.



# Le Jardin

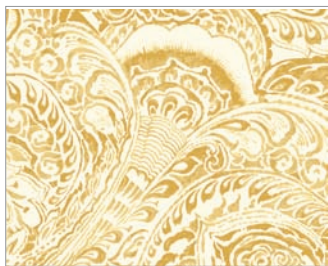
Fabric Collection by 



JARD 301 AU



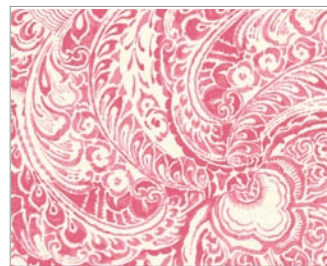
JARD 301 P



JARD 302 AU



JARD 302 K



JARD 302 P



JARD 302 WK



JARD 303 AU - 26" REPEAT



JARD 303 P



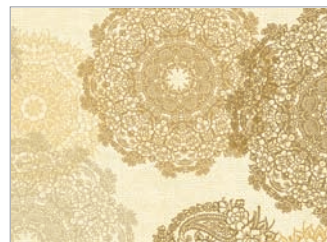
JARD 303 S



JARD 304 K



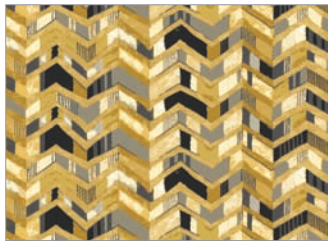
JARD 304 WK



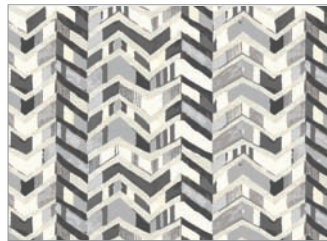
JARD 305 AU



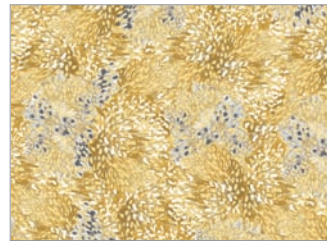
JARD 305 K



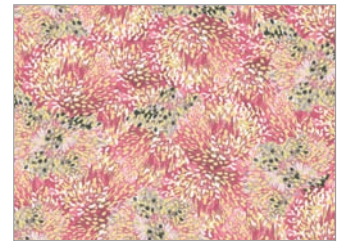
JARD 306 AU



JARD 306 S



JARD 307 AU



JARD 307 P

P&B Textiles ♦ [www.pbtex.com](http://www.pbtex.com) ♦ 800-351-9087

45-47 Washington St, Pawtucket, RI 02860 ♦ 237 W. 35th St, 11th floor, New York, NY 10001



100% cotton ♦ Cold wash & dry ♦ 43"/44" ♦ Colors may vary due to printing process ♦ 2/13

All fabrics shown at 50% scale.