

MEADOW RAIN

Quilt design by Linda Fitch featuring fabrics from the "Meadow Rain" collection by Hoffman California Fabrics



Free pattern available from www.hoffmanfabrics.com

Quilt Size 58 1/2" x 72"

Style	
L7262 101-Evening A	1/2 yard
L7259 170-Meadow	1/4 yard
L7258 48-Gray B	3/4 yard
L7262 288-Clouds	1/4 yard
L7259 4-Black C	3/8 yard
L7258 54-Rosewood	1/4 yard
L7257 80-Taupe	1/4 yard
L7289 178-Leaf	1/4 yard
L7261 116-Harvest	1/4 yard
L7260 7-Blue	1/4 yard
L7260 4-Black D	1/4 yard
L7259 8-Green	1/4 yard
1895 587-February*	2 3/8 yards

*Yardage includes binding.

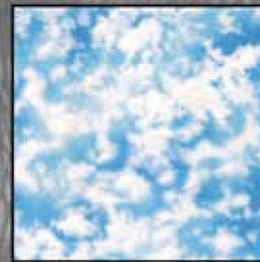
BACKING: Coordinate of your choice, cut crosswise, 4 yards



L7258 48-Gray



L7259 170-Meadow



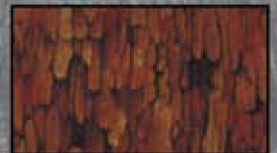
L7262 288-Clouds



L7262 101-Evening



L7259 4-Black



L7258 54-Rosewood



L7257 80-Taupe



L7289 178-Leaf



L7261 116-Harvest



L7260 7-Blue



L7260 4-Black



L7259 8-Green



1895 587-February

HOFFMAN FABRICS
CALIFORNIA-INTERNATIONAL

MEADOW RAIN

Quilt design by Linda Fitch featuring fabrics from the "Meadow Rain" collection by Hoffman California Fabrics



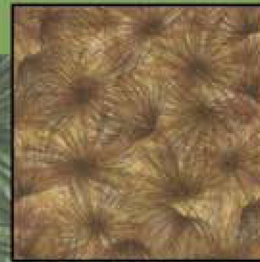
Free pattern available from www.hoffmanfabrics.com

Quilt Size 58 1/2" x 72"

Style	
L7259 36-Amber A	1/2 yard
L7262 18-Royal	1/4 yard
L7257 342-Woody B	3/4 yard
L7260 18-Royal	1/4 yard
L7258 131-Oak C	3/8 yard
L7289 166-Evergreen	1/4 yard
L7258 342-Woody D	1/4 yard
L7289 115-Grass	1/4 yard
L7257 131-Oak	1/4 yard
L7261 115-Grass	1/4 yard
L7259 8-Green	1/4 yard
L7261 436-Eucalyptus	1/4 yard
1895 485-Funnel Cake*	2 3/8 yards

*Yardage includes binding.

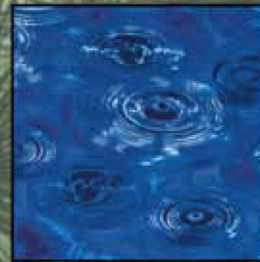
BACKING: Coordinate of your choice, cut crosswise. 4 yards



L7259 36-Amber



L7262 18-Royal



L7260 18-Royal



L7257 342-Woody



L7258 131-Oak



L7289 166-Evergreen



L7289 115-Grass



L7258 342-Woody



L7257 131-Oak



L7261 115-Grass



L7259 8-Green



L7261 436-Eucalyptus



1895 485-Funnel Cake

HOFFMAN FABRICS
CALIFORNIA-INTERNATIONAL

MEADOW RAIN

58 ½" x 72"

Featuring the Meadow Rain collection by Hoffman California Fabrics

Quilt design by Linda Fitch

CUTTING

Blocks

From Fabric A, cut (1) strip 10 ½ " WOF. Sub-cut into (12) 3" x 10 ½ " rectangles. Cut (1) strip 5 ½ " and sub-cut (12) 3 x 5 ½ " rectangles.

From Fabric B, cut (4) strips 3" x WOF. Sub-cut into (16) 3 x 10 ½ " rectangles. Cut (2) strips 5 ½ " x WOF. Sub-cut into (16) 5 ½ " x 3" rectangles.

From Fabric C, cut (1) 11" WOF strip and sub-cut into (8) 3 x 5 ½ " and (8) 3 x 10 ½ " rectangles.

From Fabric D, cut (1) 6" strip (WOF). Sub-cut into (4) 3" x 5 ½ " rectangles. From the balance, cut (4) 3" x 10 ½ " rectangles.

For the various center fabrics (8), cut (3 each) 5 ½ " squares.

Sashing

For lengthwise sashing, cut (2) strips 10 ½ " x WOF. Sub-cut into (15) 4 x 10 ½ " rectangles.

For crosswise sashing, cut (5) 4" WOF strips...go ahead and sew together at the short ends.

Outside Borders

Cut (6) 4" x WOF. Sew together at the short ends.

Binding

Cut 8 strips at 2 ¼ " WOF.

CONSTRUCTION

Using the photo for fabric placement, sew the 3 x 5 ½" rectangles to each side of a 5 ½" square. Press seam outward.

Attach the 10 ½" rectangles to the top and bottom . Press seam outward.

Make 20 blocks.

With your blocks arranged, intersperse the 4" x 10 ½" sashing rectangles between the 4 blocks in the first row.

Repeat for rows 2-5.

Once your rows are complete, take one of the rows and fold in half (crosswise), joining raw edges . Measure. Double this amount. From the long strip pieced for the horizontal sashing, cut 4 strips to this measurement.

Sew these 4 strips to the bottom of each row. Note there will be no sashing at the bottom of the 5th row.

Now sew all the rows together, including the 5th, at the very bottom.

Once the center of the quilt is pieced, fold the quilt in half, top to bottom. Measure down the middle, from fold to raw edges. Double this amount. From the 4" border strip, cut 2 pieces to this measurement and attach to the left and right sides of your quilt.

Again fold the quilt in half, but this time with the left to right edges meeting. Measure and double amount. Cut 2 pieces of this measurement and attach to the top and bottom of your quilt.

Layer top, batting and backing. Quilt. Bind using your favorite method.

Enjoy!