

Midnight Gardens

Fabric collection by Susie M. Robbins

FREE PATTERN

Ask for our fabrics
in your local
independent
quilt shop!



Midnight Maze quilt by Nancy Mahoney

Size: 56" x 72"



pbtex.com

Midnight Maze

Quilt by Nancy Mahoney using the *Midnight Gardens* fabric collection by Susie M. Robbins for P&B Textiles • Size: 65" square

Yardage

MIGA 815 MU	main floral	1 3/4 yards
MIGA 817 B	blue floral	5/8 yard
MIGA 817 O	orange floral	5/8 yard
MIGA 818 P	pink stripe	1/2 yard
MIGA 819 B	blue tonal	5/8 yard
MIGA 819 P	pink tonal	1/4 yard
MIGA 820 C	purple swirl	1/4 yard
MIGA 820 Y	yellow swirl	3/8 yard
RAM7 726 W	white print	1 7/8 yards
BACKING	Any MIGA fabric	3 3/8 yards

Cutting

All strips are cut across the width of fabric (wof).

From **MIGA 815 MU** (main floral), cut:

- (7) 4 1/2" x wof outer-border strips
- (3) 7 1/2" x wof strips; cut into (13) 7 1/2" squares

From **MIGA 817 B** (blue floral), cut:

- (1) 7 3/4" x wof strip; cut into (26) 1 1/2" x 7 3/4" rectangles
- (5) 2" x wof strips; cut into (24) 2" x 4 1/2" rectangles and (24) 2" x 3" rectangles

From **MIGA 817 O** (orange floral), cut:

- 1) 7 3/4" x wof strip; cut into (26) 1 1/2" x 7 3/4" rectangles
- (5) 2" x wof strips; cut into (24) 2" x 4 1/2" rectangles and (24) 2" x 3" rectangles

From **MIGA 818 P** (pink stripe), cut:

- (6) 2" x wof border strips

From **MIGA 819 B** (blue tonal), cut:

- (7) 2 1/4" x wof binding strips

From **MIGA 819 P** (pink tonal), cut:

- (2) 3" x wof strips; cut into (24) 3" squares

From **MIGA 820 C** (purple swirl), cut:

- (2) 3" x wof strips; cut into (24) 3" squares

From **MIGA 820 Y** (yellow swirl), cut:

- (11) 1" x wof strips; cut into (24) 1" x 10 1/2" strips and (24) 1" x 5 1/4" strips

From **RAM7 726 W** (white print), cut:

- (2) 8 1/2" x wof strips; cut into (52) 1 1/4" x 8 1/2" rectangles
- (2) 5 1/4" x wof strips; cut into (48) 1 1/4" x 5 1/4" rectangles and (16) 1 1/4" x 4 1/2" rectangles
- (1) 4 1/2" x wof strip; cut into (32) 1 1/4" x 4 1/2" rectangles (for a combined total of (48) 4 1/2"-long rectangles)
- (3) 3 1/2" x wof strips; cut into (26) 3 1/2" squares. Cut each square in half diagonally to yield (52) triangles.
- (12) 1 1/2" x wof border strips



Block A Assembly

1. Center and sew white $1\frac{1}{4}$ " x $8\frac{1}{2}$ " rectangles to opposite sides of a main floral square. Then center and sew white $1\frac{1}{4}$ " x $8\frac{1}{2}$ " rectangles to the remaining two sides of the square. Both ends of the white rectangles should extend beyond the edges of the square. *Do not trim* the rectangles until the block is completed.

2. Center and sew blue floral $1\frac{1}{2}$ " x $7\frac{3}{4}$ " rectangles to opposite sides of the unit from step 1. Then center and sew orange floral $1\frac{1}{2}$ " x $7\frac{3}{4}$ " rectangles to the remaining two sides of the unit. Again, do not trim the rectangles until the block is completed.

3. Center and sew white triangles to each corner of the unit from step 2 to complete the block. Use a square ruler and a rotary cutter to trim and square up the block to measure $10\frac{1}{2}$ " square, making sure to leave $\frac{1}{4}$ " beyond the points of the center square for seam allowances.

4. Repeat steps 1–3 to make a total of 13 of block A.



Block B Assembly

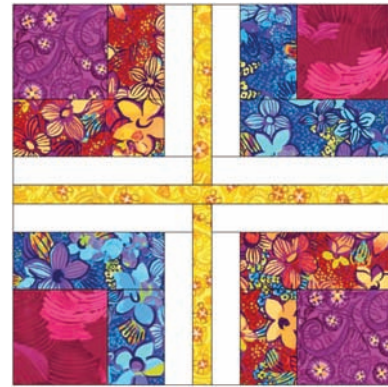
5. Sew a blue floral 2 " x 3 " rectangle to the left side of a pink tonal 3 " square. Then sew a blue floral 2 " x $4\frac{1}{2}$ " rectangle to the bottom of the square. Repeat to make a second blue/pink unit.

6. Sew an orange floral 2 " x 3 " rectangle to the left side of a purple swirl 3 " square. Then sew an orange floral 2 " x $4\frac{1}{2}$ " rectangle to the bottom of the square. Repeat to make a second orange/purple unit.

7. Sew a white $1\frac{1}{4}$ " x $4\frac{1}{2}$ " rectangle to the left side of each blue/pink unit. Then sew a white $1\frac{1}{4}$ " x $5\frac{1}{4}$ " rectangle to the bottom of each unit. Repeat the process, sewing white rectangles to each orange/purple unit.

8. Lay out the two blue/pink units and two orange/purple units from step 7, two yellow swirl 1 " x $5\frac{1}{4}$ " rectangles, and one yellow swirl 1 " x $10\frac{1}{2}$ " rectangle as shown in the block diagram. Join the pieces into rows and then join the rows to complete the block.

9. Repeat steps 5–8 to make a total of 12 of block B.



Quilt Top Assembly

10. Lay out the A and B blocks in five rows of five blocks each, alternating the blocks in each row and from row to row as shown in the photo. Sew the blocks into rows and then join the rows to complete the quilt center.

11. Join six of the white $1\frac{1}{2}$ "-wide strips end to end to make a long strip. Measure the length of the quilt top. Cut two strips to this length and sew them to the sides of the quilt top. Measure the width of the quilt top. Cut two strips to this length and sew them to the top and bottom of the quilt top to complete the inner border.

12. Join the pink striped strips end to end to make a long strip. Repeat step 11 to measure, cut and sew the strips to the sides, top, and bottom of the quilt top.

13. Join the remaining white $1\frac{1}{2}$ "-wide strips end to end to make a long strip. Repeat step 11 to measure, cut and sew the strips to the sides, top, and bottom of the quilt top.

14. Join the main floral strips end to end to make a long strip. In the same way, measure, cut and sew the strips to the sides, top, and bottom of the quilt top to complete the outer border.

15. Layer the quilt top with batting and backing; baste. Quilt as desired. Using the blue $2\frac{1}{4}$ "-wide binding strips, bind the edges to finish.

Midnight Gardens

Fabric Collection by Susie M. Robbins



MIGA 815 MU



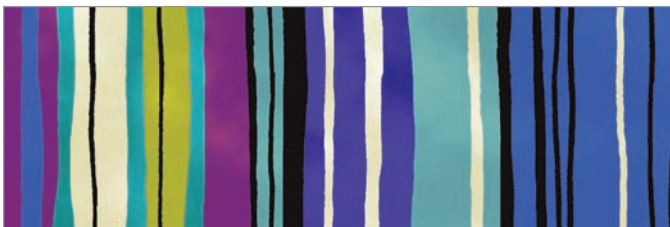
MIGA 816 W



MIGA 817 B



MIGA 817 O



MIGA 818 B



MIGA 818 P



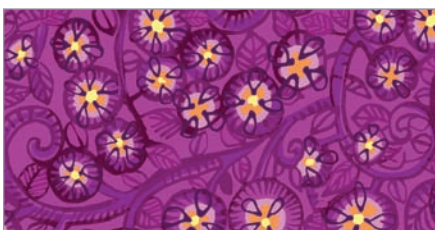
MIGA 819 B



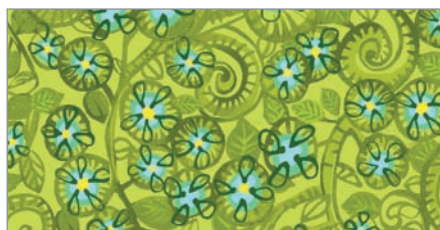
MIGA 819 P



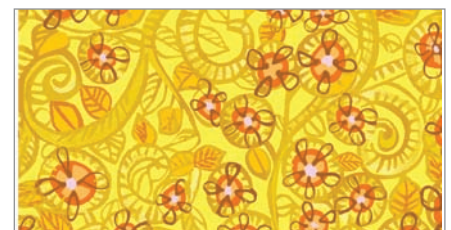
MIGA 819 R



MIGA 820 C




MIGA 820 G



MIGA 820 Y

P&B Textiles ♦ 1580 Gilbreth Road, Burlingame, CA 94010 ♦ 800-852-2327
For wholesale orders: 14683 Midway Road, Addison, TX 75001 ♦ 800-351-9087 ♦ www.pbtext.com

 100% cotton ♦ Cold wash & dry ♦ 43"/44" ♦ Colors may vary due to printing process ♦ 7/12
All fabrics shown at 50% scale.