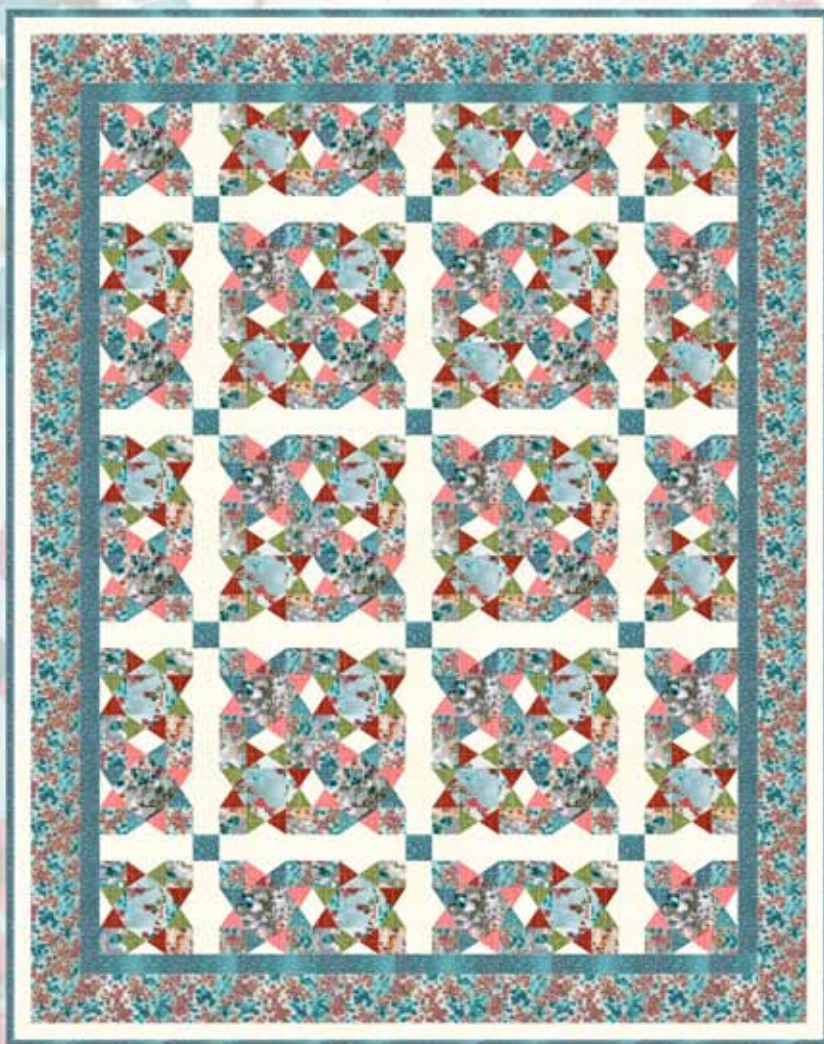
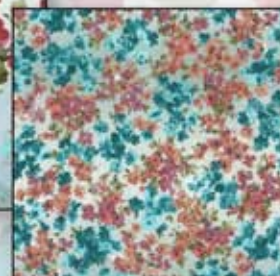


"MISTY SEA BREEZE"

Quilt Design by Bev Remillard Featuring fabrics from the "Autumn Mist" Collection
by Hoffman California Fabrics



J7044
Sea Breeze #207



J7045
Sea Breeze #207



J9002
Peach #27



J9002
Rust #39



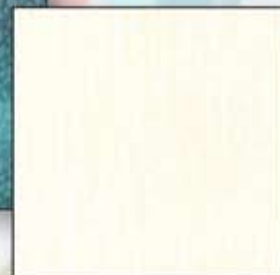
J9002
Olive #96



J7043
Sea Breeze #207



J7046
Sea Breeze #207



J9002
Natural #20

To see more quilts designed by Bev go to www.ladylikedesigns.com

Free pattern available from www.HoffmanFabrics.com

Quilt Size 64" x 82"

Style	
J7044 Sea Breeze #207	¾ yard
J7045 Sea Breeze #207	1 ¼ yards
J9002 Peach #27	¼ yard
J9002 Rust #39	¼ yard
J9002 Olive #96	¼ yard
J7043 Sea Breeze #207	¾ yard
J7046 Sea Breeze #207	1 yard
J9002 Natural #20	1 ½ yards
Backing (your favorite "Autumn Mist" fabric)	4 yards






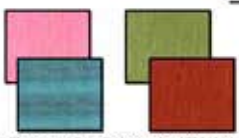




*NOTE: CUT BACKING FABRIC CROSS-WISE

HOFFMAN FABRICS

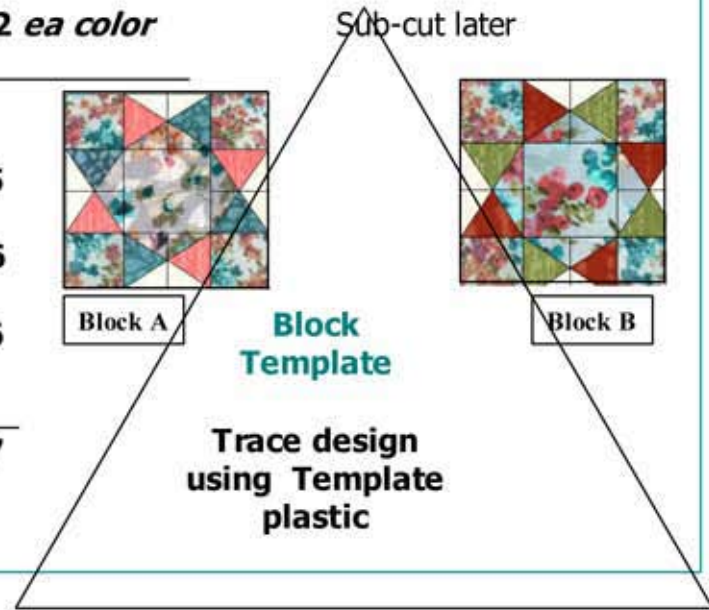
CALIFORNIA-INTERNATIONAL

Sea Breeze

Cutting Instructions

Position	Color	1st cut	Quantity	2nd cut	Total
Block A Center		4-1/2" x 42" strips	3	sub-cut to 4-1/2" squares	24 total
		J7043 Sea Breeze 4-1/2" x 42" strips	2	sub-cut later	
Block B Center		4-1/2" x 42" strips	3	sub-cut to 4-1/2" squares	24 total
		J7044 Sea Breeze 4-1/2" x 42" strips	2	sub-cut later	
Background (sashing/sides)		4-1/2" x 42" strips	4	sub-cut later	48 total
		J9002 in Natural 8-1/2" x 42" strip	3	sub-cut to 8-1/2" x 2-1/2" Sashing	
Corner Squares		2-1/2" x 42" strips	3	sub-cut to 2-1/2" squares	48 total
		J7045 Sea Breeze			
Sashing Stones		2-1/2" x 42" strip	1	sub-cut to 2-1/2" squares	12 total
J7046 Sea Breeze					
Template Colors		3-1/4" x 42" strips	2 ea color	Sub-cut later	
J9002 in Peach, Rust and Olive & J7046					
Borders					
#1		1-1/2" strips	5		
#2		5-1/2" strips	6		
#3		1-1/2" strips	6		
J7046					
Binding		2-1/2" strips	7		
J7046					

Supplies
Template Plastic or TRex ruler



Step 1. Template

- Using Template plastic, trace star point shape
- Lay template on 3-1/4" strips of each **template color fabric** and trace shape, reversing directions to save space.

If you leave strip folded in half wrong sides together, (approx 22" long) you can cut



shape using a ruler and rotary cutter—you will need **24 triangles per folded strip** per color(4 choices).

For best results: do not use the plastic template as your cutting guide—it will distort the shape when you cut with rotary cutter, instead copy the shape onto the strip and use a ruler as your guide to cut the shape with your rotary cutter.

Sea Breeze

Quilt Assembly

Step 2. Rectangles

- Using (2) 4-1/2" strips previously cut for **block A & B** + 4-1/2" **background**.
- From each 4-1/2" strip, lay fabric strip folded with wrong sides together, sub-cut 2-1/2" Rectangles.



Fold

- Sub-cut rectangles in half **diagonally, to cut a left and right side, set in 2 piles right side up.**

- Repeat for **Block B** 4-1/2" strips
- and **Background** 4-1/2" strips.



Diagonal
Cut on all
rectangles



Left side

Right side

Sort small triangles so they are right size up

Step 3. Triangle Units (sample Block A sides)

- To combine triangle units, lay out the block A colors with the small triangles on each side. Make sure the correct triangle fabric is with the correct block color and on the correct side (right or left) - Repeat for both color Choices (there are 2 choices) Need 48 each color combination for **Block A**.
- To bring sides together—join (2) triangle units at the star point, making sure colors and backgrounds are on the same side as you combine—see sample.
- Combined side units should finish at 4-1/2" x 2-1/2" rect..
- Make **Block B combinations** in the same manner.

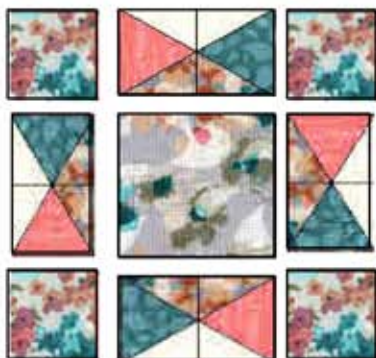


Finish at
4-1/2 x 2-1/2

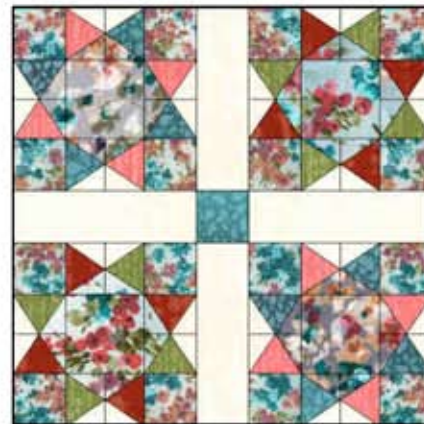


Step 4. Combining the blocks (sample Block A)

- Since there are 2 completed blocks (24 of each) for the body of the quilt, combine **Block B** in the same manner as **Block A** with color changes as pictured.



Block A—need 24 total
Repeat for Block B



Large
Combined block
17-1/2" square
Need 12 total

Step 5. Finishing

- Quilt body is a combination of large blocks which give the illusion of large blocks in the middle and small blocks on the outside—In fact the small blocks (Blocks A & B) are joined with sashing strips and sashing stones in one large block as pictured (12 total).
- Join large combined blocks as quilt body with 3 large blocks across each row and 4 large block down.
- Add Borders 1-3 (see cutting information).
- Quilt as desired, add binding & label and enjoy!
- Finished quilt size is approximately 64 x 82.

Bev Remillard
Ladylike Designs
www.ladylikedesigns.com

Sea Breeze

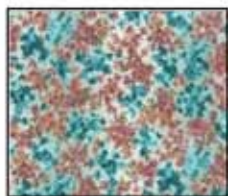
Fabric Requirements

Quilt Size - 64 x 82



1

#J7044 Sea
Breeze
3/4 yard



5

#J7045 Sea
Breeze
1-1/4 yards



2

#J9002
Peach
1/4 yard



6

#J9002
Rust
1/4 yard



3

#J9002
Olive
1/4 yard



7

#J7043 Sea
Breeze
3/4 yard



4

#J7046 Sea
Breeze
1 yard



8

#J9002
Natural
1-3/8 yards

By

Bev Remillard

Ladylike Designs

www.ladylikedesigns.com

Hoffman California Fabrics

www.hoffmanfabrics.com