



CLOSE TO HOME

Fabric Collection by TS POST



MODERN ART

Modern Art quilt by Heidi Pridemore
using the *Close to Home* fabric collection by TS Post
for P&B Textiles • Size: 54" x 66"

YARDAGE

Fabric A	CLOS 281 MU	2/3 yard
Fabric B	CLOS 288 K	1 yard
Fabric C	CLOS 285 T	1/2 yard
Fabric D	CLOS 282 B	2/3 yard
Fabric E	CLOS 283 B	1/2 yard
Fabric F	CLOS 283 E	1/4 yard
Fabric G	CLOS 283 K	1/8 yard
Fabric H	CLOS 284 O	1/4 yard
Fabric I	CLOS 285 K	1/4 yard
Fabric J	CLOS 286 K	1/4 yard
Fabric K	CLOS 286 T	3/8 yard
Fabric L	CLOS 287 K	3/4 yard
Fabric M	CLOS 287 O	3/8 yard
Fabric N	CLOS 288 E	1/2 yard
Fabric O	CLOS 288 G	1/8 yard
Fabric P	CLOS 288 O	7/8 yard
Backing	any CLOS fabric	3 1/2 yards
Paper-backed fusible web		

CUTTING

Cut fabric selvage to selvage unless otherwise noted.

Fabric A (CLOS 281 MU):

- Prepare with fusible web, then cut (10) 6 1/2" squares; centering a block in the middle of each square as shown in the photo

Fabric B (CLOS 288 K), cut:

- (1) 24 1/2" x 36 1/2" background piece
- (1) 3 1/2" x 42" strip; cut into (3) 3 1/2" x 6 1/2" strips

Fabric C (CLOS 285 T), cut:

- (4) 6" circles; prepared with fusible web
- (1) 6 1/2" x 42" strip; cut into (4) 3 1/2" x 6 1/2" strips

Fabric D (CLOS 282 B), cut:

- (1) 8 1/2" x 42" strip; cut into (4) 8 1/2" squares
- (1) 4 1/2" x 42" strip; cut into (2) 4 1/2" x 8 1/2" strips and (2) 4 1/2" x 7 1/2" strips
- (1) 7 1/2" x 42" strip; cut into (6) 6 1/2" x 7 1/2" strips

Fabric E (CLOS 283 B), cut:

- (1) 4 1/2" x 42" strip; cut into (4) 4 1/2" x 5 1/2" strips
- (1) 6 1/2" x 42" strip; cut into (7) 3 1/2" x 6 1/2" strips
- (1) 3 1/2" x 42" strip; cut into (6) 3 1/2" x 4 1/2" strips

Fabric F (CLOS 283 E), cut:

- (1) 3 1/2" x 42" strip; cut into (4) 3 1/2" x 4 1/2" strips

Fabric G (CLOS 283 K), cut:

- (1) 2 1/2" x 42" strip; cut into (4) 2 1/2" x 8 1/2" strips

Fabric H (CLOS 284 O), cut:

- (2) 2 1/2" x 42" strips; cut into (5) 2 1/2" x 12 1/2" strips

Fabric I (CLOS 285 K), cut:

- (1) 3 1/2" x 42" strip; cut into (6) 3 1/2" x 4 1/2" strips

Fabric J (CLOS 286 K), cut:

- (5) ~~6 1/2"~~ circles, prepared with fusible web

5"

Fabric K (CLOS 286 T), cut:

- (1) 2 1/2" x 42" strip; cut into (4) 2 1/2" x 4 1/2" strips
- (5) ~~6 1/2"~~ circles, prepared with fusible web

5"

Fabric L (CLOS 287 K), cut:

- (6) 3 1/2" x 42" outer-border strips

Fabric M (CLOS 287 O), cut:

- (3) 2 1/2" x 42" strip; cut into
 - (5) 2 1/2" x 12 1/2" strips
 - (4) 2 1/2" x 4 1/2" strips
 - (4) 2 1/2" squares

Fabric N (CLOS 288 E), cut:

- (2) 6 1/2" x 42" strips; cut into (10) 6 1/2" squares

Fabric O (CLOS 288 G), cut:

- (1) 2 1/2" x 42" strip; cut into (4) 2 1/2" x 4 1/2" strips

Fabric P (CLOS 288 O), cut:

- (1) 4 1/2" x 42" strip; cut into:
 - (2) 4 1/2" x 5 1/2" strips
 - (2) 4 1/2" squares
 - (4) 3 1/2" squares
- (1) 2 1/2" x 42" strip; cut (4) 2 1/2" squares
- (7) 2 1/2" x 42" binding strips

CENTER PANEL ASSEMBLY

1. Following the manufacturer's instructions, trace (4) 6" circles, (10) 6 1/2" circles, and (10) 6 1/2" squares onto the paper side of the fusible web. Roughly cut out each shape about 1/8" outside the drawn lines.

2. Referring to the cutting list, fuse each shape to the wrong side of the fabrics as indicated. Cut out each shape on the drawn lines.

3. Referring to the photo for placement guidance, arrange and fuse the fabric A squares and fabric C circles on the fabric B 24 1/2" x 36 1/2" strip as shown. Trim the circles even with the edge of the fabric B strip.

4. Finish the raw edges of each appliqué shape with a decorative stitch such as a satin or buttonhole stitch to complete the center panel.

BLOCK ASSEMBLY

5. Fuse a fabric J circle to the center of each fabric N square to make five J/N units. Fuse a fabric K circle to the center of each fabric N square to make five K/N units.

6. To make block One, join one fabric D 8 1/2" square, one fabric E 4 1/2" x 5 1/2" strip, one fabric F 3 1/2" x 4 1/2" strip, one fabric G 2 1/2" x 8 1/2" strip, one fabric K 2 1/2" x 4 1/2" strip, one fabric M 2 1/2" x 4 1/2" strip, one fabric O 2 1/2" x 4 1/2" strip, one fabric M 2 1/2" square, and one fabric P

2 1/2" square to make a block. Repeat to make a second block One. The blocks should measure 12 1/2" square.



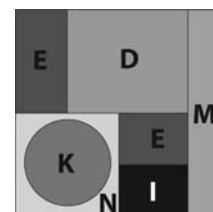
Block 1

7. Repeat step 6 to make two of block Two. The blocks should measure 12 1/2" square.



Block 2

8. To make block Three, join one fabric E 3 1/2" x 6 1/2" strip, one fabric D 6 1/2" x 7 1/2" strip, one K/N unit, one fabric E 3 1/2" x 4 1/2" strip, one fabric I 3 1/2" x 4 1/2" strip, and one fabric M 2 1/2" x 12 1/2" strip to make a block. Repeat to make a second block Three. The blocks should measure 12 1/2" square.



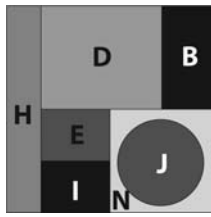
Block 3

9. To make block Four, join fabric B 3 1/2" x 6 1/2" strip, one fabric D 6 1/2" x 7 1/2" strip, one fabric E 3 1/2" x 4 1/2" strip, one fabric I 3 1/2" x 4 1/2" strip, one fabric H 2 1/2" x 12 1/2" strip, and one J/N unit to make a block. The block should measure 12 1/2" square.



Block 4

10. Repeat step 9 to make two of block Five. The blocks should measure $12\frac{1}{2}$ " square.



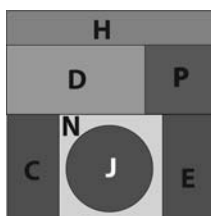
Block 5

11. To make block Six, join one fabric M $2\frac{1}{2}$ " x $12\frac{1}{2}$ " strip, one fabric D $6\frac{1}{2}$ " x $7\frac{1}{2}$ " strip, one fabric E $3\frac{1}{2}$ " x $6\frac{1}{2}$ " strip, one K/N unit, one fabric E $3\frac{1}{2}$ " x $4\frac{1}{2}$ " strip, and one fabric I $3\frac{1}{2}$ " x $4\frac{1}{2}$ " strip to make a block. The block should measure $12\frac{1}{2}$ " square.



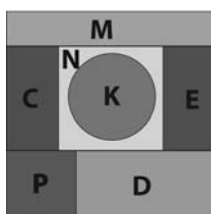
Block 6

12. To make block Seven, join one fabric H $2\frac{1}{2}$ " x $12\frac{1}{2}$ " strip, one fabric D $4\frac{1}{2}$ " x $8\frac{1}{2}$ " strip, one fabric P $4\frac{1}{2}$ " square, one fabric C $3\frac{1}{2}$ " x $6\frac{1}{2}$ " strip, one J/N unit, and one fabric E $3\frac{1}{2}$ " x $6\frac{1}{2}$ " strip to make a block. The block should measure $12\frac{1}{2}$ " square.



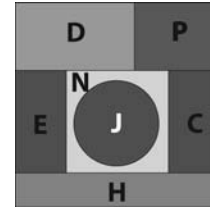
Block 7

13. To make block Eight, join one fabric M $2\frac{1}{2}$ " x $12\frac{1}{2}$ " strip, one fabric C $3\frac{1}{2}$ " x $6\frac{1}{2}$ " strip, one K/N unit, one fabric E $3\frac{1}{2}$ " x $6\frac{1}{2}$ " strip, one fabric P $4\frac{1}{2}$ " square, and one fabric D $4\frac{1}{2}$ " x $8\frac{1}{2}$ " strip to make a block. The block should measure $12\frac{1}{2}$ " square.



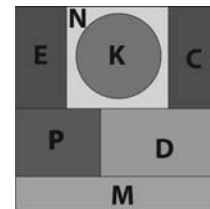
Block 8

14. To make block Nine, join one fabric D $4\frac{1}{2}$ " x $7\frac{1}{2}$ " strip, one fabric P $4\frac{1}{2}$ " x $5\frac{1}{2}$ " square, one fabric E $3\frac{1}{2}$ " x $6\frac{1}{2}$ " strip, one J/N unit, one fabric C $3\frac{1}{2}$ " x $6\frac{1}{2}$ " strip, and one fabric H $2\frac{1}{2}$ " x $12\frac{1}{2}$ " strip to make a block. The block should measure $12\frac{1}{2}$ " square.



Block 9

15. To make block Ten, join one fabric D $4\frac{1}{2}$ " x $7\frac{1}{2}$ " strip, one fabric P $4\frac{1}{2}$ " x $5\frac{1}{2}$ " strip, one fabric E $3\frac{1}{2}$ " x $6\frac{1}{2}$ " strip, one K/N unit, one fabric C $3\frac{1}{2}$ " x $6\frac{1}{2}$ " strip, and one fabric M $2\frac{1}{2}$ " x $12\frac{1}{2}$ " strip to make a block. The block should measure $12\frac{1}{2}$ " square.



Block 10

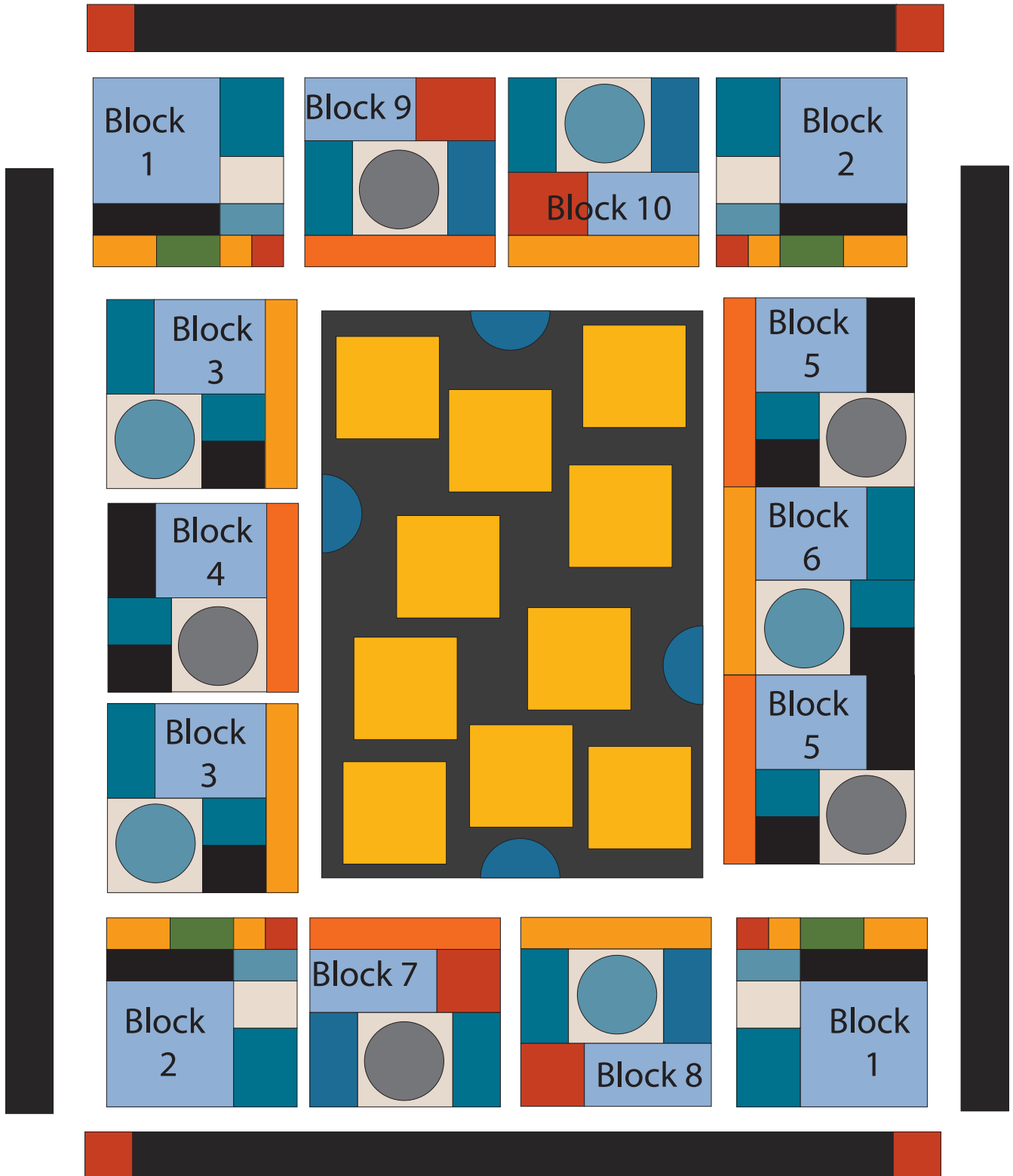
QUILT ASSEMBLY

16. Lay out the blocks and center panel as shown in the quilt layout diagram. Join the blocks into rows. Join the rows and center panel to complete the quilt center. The quilt center should measure $48\frac{1}{2}$ " x $60\frac{1}{2}$ ".

17. Join the fabric L strips together end to end. From the pieced strip, cut two $60\frac{1}{2}$ "-long strips and sew them to opposite sides of the quilt top. From the remaining pieced strip, cut two $48\frac{1}{2}$ "-long strips. Sew a fabric P $3\frac{1}{2}$ " square to the ends of the strips and then sew them to the top and bottom of the quilt top to complete the outer border.

18. Layer the quilt top with batting and backing; baste. Quilt as desired. Using the Fabric P $2\frac{1}{4}$ "-wide strips, bind the edges to finish.

MODERN ART LAYOUT DIAGRAM



CLOSE TO HOME

Fabric Collection by TS Post



CLOS 281 MU — SHOWN SELVAGE TO SELVAGE — 24" REPEAT



CLOS 282 B — SHOWN AT 25% SCALE



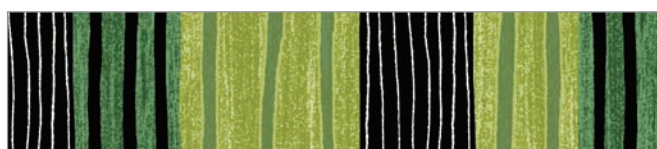
CLOS 283 B



CLOS 283 E



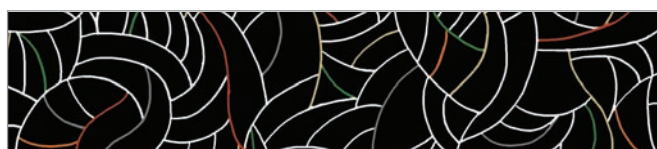
CLOS 283 K



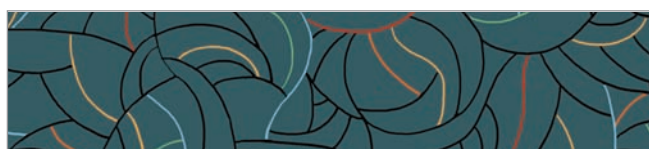
CLOS 284 G



CLOS 284 O



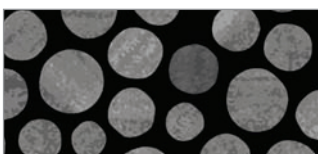
CLOS 285 K



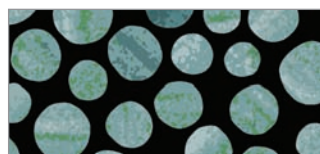
CLOS 285 T



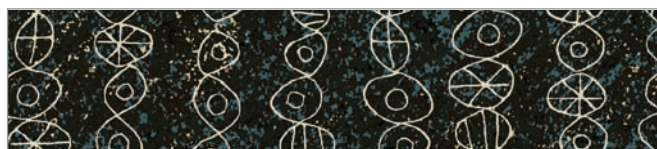
CLOS 286 E



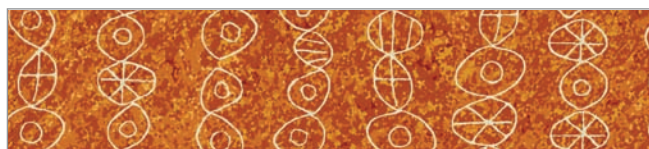
CLOS 286 K



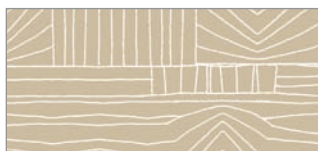
CLOS 286 T



CLOS 287 K



CLOS 287 O



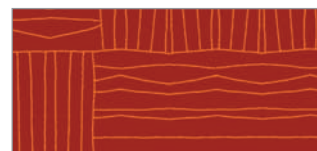
CLOS 288 E



CLOS 288 G



CLOS 288 K



CLOS 288 O



P&B Textiles ♦ www.pbtex.com ♦ 800-351-9087
45-47 Washington St, Pawtucket, RI 02860 ♦ 237 W. 35th St, 11th floor, New York, NY 10001

△ 100% cotton ♦ Cold wash & dry ♦ 43"/44" ♦ Colors may vary due to printing process
All fabrics shown at 50% scale except where indicated otherwise.