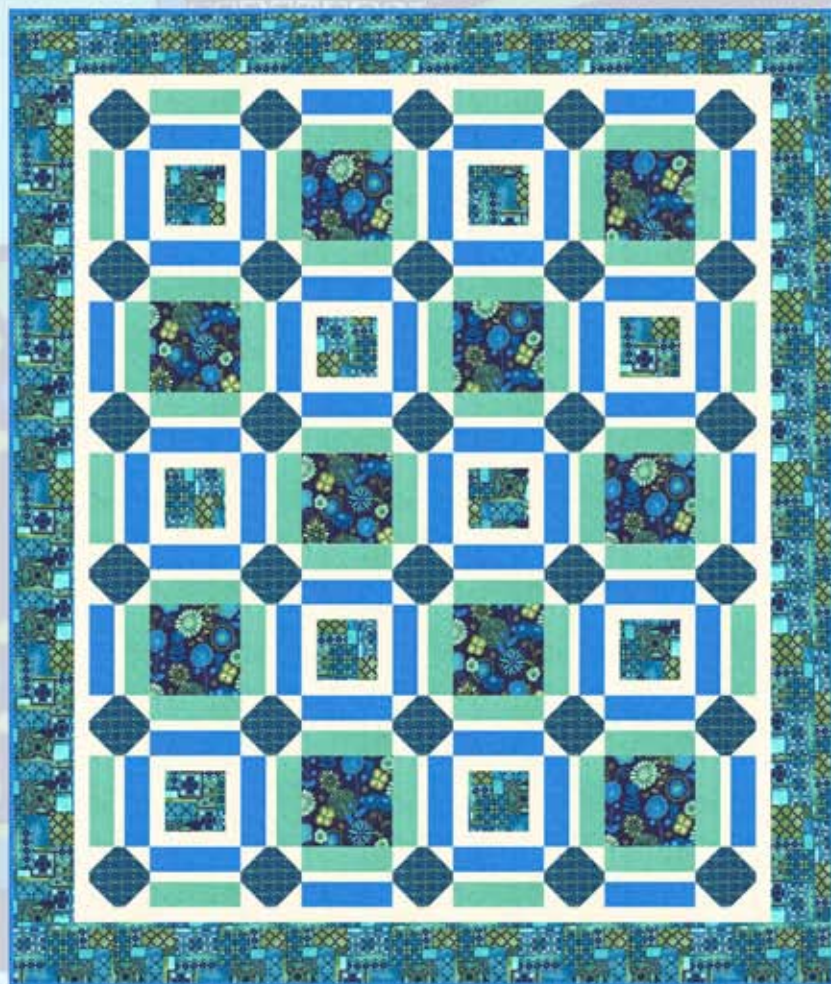


MOONLIT GARDEN

Quilt Design by Laura Blanchard featuring fabrics from the "Moonlit Garden" Collection by Hoffman California Fabrics.



To see more quilts designed by Laura go to www.plumtreequilts.com

Free pattern available from
www.HoffmanFabrics.com

Quilt Size 81" x 96"

Blue Jay Colorway	1 Kit
K4126 261-Blue Jay	1 yard
K4127 186-Blue Jay	2 ½ yards
K4128 186-Blue Jay	1 ½ yards
J9000 3-White	2 ¾ yards
J9000 73-Ocean*	1 7/8 yards
J9000 74-Mint	1 ¼ yards

*Yardage includes binding.

BACKING: Coordinate of your choice.

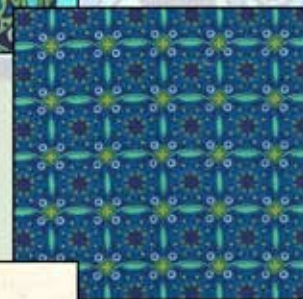
5 yards cut crosswise



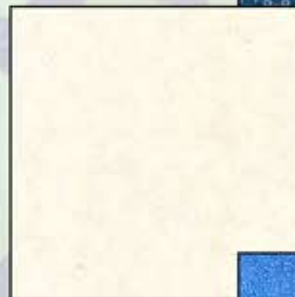
K4126 261
Blue Jay



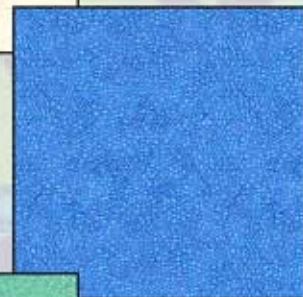
K4127 261
Blue Jay



K4128 261
Blue Jay



J9000 3
White



J9000 73
Ocean



J9000 74
Mint

HOFFMAN FABRICS

CALIFORNIA-INTERNATIONAL

MOONLIT GARDEN

Quilt Design by Laura Blanchard featuring fabrics from the "Moonlit Garden" Collection by Hoffman California Fabrics.



To see more quilts designed by Laura go to www.plumtreequilts.com

Free pattern available from
www.HoffmanFabrics.com

Quilt Size 81" x 96"

Morocco Colorway	
K4126 186-Morocco	1 yard
K4127 186-Morocco	2 ½ yards
K4128 186-Morocco	1 ½ yards
J9000 62-Sand	2 ¾ yards
J9000 65-Denim*	1 ⅞ yards
J9000 14-Purple	1 ¼ yards

*Yardage includes binding.

BACKING: Coordinate of your choice.

5 yards cut crosswise



K4126 186
Morocco



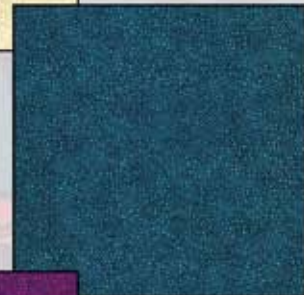
K4127 186
Morocco



K4128 186
Morocco



J9000 62
Sand



J9000 65
Denim



J9000 14
Purple

HOFFMAN FABRICS

CALIFORNIA-INTERNATIONAL

MOONLIT GARDEN

Fabrics from the “Moonlit Garden” collection by Hoffman Fabrics

Quilt design by Laura Blanchard of Plum Tree Quilts • Quilt size: 81" x 96" • Block size: 9" square

Fabric Requirements

	<u>MOROCCO</u>	<u>BLUE JAY</u>	<u>yardage</u>
Fabric A:	J9000-sand-62	J9000-white-3	2¾ yards
Fabric B:	J9000-denim-65	J9000-ocean-73	1⅞ yards
Fabric C:	J9000-purple-14	J9000-mint-74	1¼ yards
Fabric D:	K4127-186	K4127-261	2½ yards
Fabric E:	K4128-186	K4128-261	1⅞ yards
Fabric F:	K4126-186	K4126-261	1 yard
Backing of choice.....			5 yards (cut cross-wise)
Batting.....			91" x 106"

Cutting *(All cutting is done from selvage to selvage unless otherwise noted. Cut fabrics in order given.)*

- Fabric A:
- Cut (1) 6½" strip. Crosscut (20) 2" x 6½" rectangles for framed square blocks.
 - Cut (1) 9½" strip. Crosscut (20) 2" x 9½" rectangles for framed square blocks.
 - Cut (13) 1½" strips for sashing units.
 - Cut (11) 3⅜" strips. Crosscut (120) 3⅜" squares for cornerstone units.
 - Cut (8) 2" strips for inner border.

- Fabric B:
- Cut (13) 3" strips for sashing units.
 - Cut (10) 2¼" strips for binding.

- Fabric C:
- Cut (13) 3" strips for sashing units.

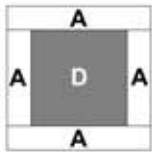
- Fabric D:
- Cut (4) 6½" x **length of fabric** strips for outer border.
 - From remaining fabric, cut (10) 6½" squares for framed square blocks.

- Fabric E:
- Cut (5) 6½" strips. Crosscut (30) 6½" squares for the cornerstone units.

- Fabric F:
- Cut (3) 9½" strips. Crosscut (10) 9½" squares.

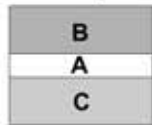
Piecing

Framed Square Blocks:



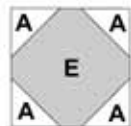
1. Sew a 2" x 6½" A rectangle to each side of a D square. Press toward A.
2. Sew a 2" x 9½" A rectangle to the top and bottom of the unit. Press toward A.
3. Repeat to make (10) 9½" framed square blocks.

Sashing units:

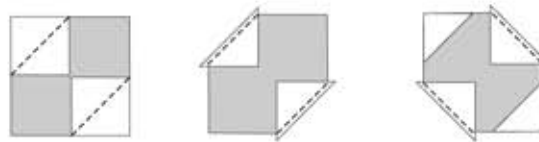


1. Sew a 3" B strip to one long side of a 1½" A strip. Press toward B.
2. Sew a 3" C strip to the opposite side of the 1½" A strip. Press toward C.
3. Make (13) B/A/C strip sets and crosscut them into (49) 9½" segments.

Cornerstone Units:



1. Draw a diagonal line on the wrong side of the (120) 3⅜" A squares.
2. Position an A square on opposite corners of a 6½" E square, edges even, as shown below.
3. Stitch on the diagonal line. Trim ¼" away from the seam line. Press toward A.
4. Repeat on the two remaining corners of the E square to complete a cornerstone unit.
5. Make (30) 6½" cornerstone units.



Quilt Assembly

1. Arrange the (10) 9½" F squares, the framed square blocks, sashing units and cornerstone units as shown in the quilt diagram. Position the sashing units as shown. Sew together into rows. Press seams toward sashing units. Sew rows together. Press
2. Sew the (8) 2" A inner border strips together end to end. Press seams open. Cut two lengths equal to the length of quilt. Sew to sides of quilt. Cut two lengths equal to the width of quilt. Sew to top and bottom of quilt. Press seams toward inner border strips.
3. Cut two 6½" D outer border strips equal to the length of quilt. Sew to sides of quilt. Cut two lengths equal to the width of quilt. Sew to top and bottom of quilt. Press seams toward outer border strips.

Finishing

1. Prepare backing to measure 91" x 106". Press seams open.
2. Layer quilt top, batting and backing. Baste layers together.
3. Quilt as desired.
4. Trim layers even with quilt top.
5. Join the (10) 2¼" B binding strips with diagonal seams. Press seams open. Press joined strips in half, lengthwise, wrong sides together to create double-fold binding. Sew binding to quilt using your favorite method.
6. Make a label and sew to the back of quilt.

