

INTERSECTIONS



INTERSECTIONS

Nightfall quilt by Corey Yoder
using the *Intersections* fabric collection
by Lily Martine Baxter for P&B Textiles

Size: 42" x 50"

YARDAGE

INTE 841 K	2 yards
INTE 842 T	7/8 yard
INTE 843 K	1 1/3 yards
CSNE W*	1 1/3 yards
BACKING	3 yards of any INTE fabric

*Color Spectrum solid white

CUTTING

All strips are cut across the width of the fabric.

From INTE 842 T, cut:

- (7) 3" x 42" strips; cut into (40) 3" x 7" rectangles

From INTE 843 K, cut:

- (7) 3" x 42" strips; cut into (40) 3" x 7" rectangles
- (4) 1 1/2" x 42" strips. From strips, cut
 - (2) 1 1/2" x 40 1/2" inner-border strips and
 - (2) 1 1/2" x 34 1/2" inner-border strips
- (5) 2 1/4" x 42" binding strips

From CSNE W, cut:

- (12) 3" x 42" strips; cut into (80) 3" x 5 1/2" rectangles
- (4) 1 1/2" x 42" strips. Piece strips; cut into
 - (2) 1 1/2" x 42 1/2" middle-border strips and
 - (2) 1 1/2" x 36 1/2" middle-border strips

From INTE 841 K, cut:

- (10) 5" x 42" strips; cut into (80) 5" squares
- (5) 3 1/2" x 42" strips. Piece strips; cut into
 - (2) 3 1/2" x 44 1/2" outer-border strips and
 - (2) 3 1/2" x 42 1/2" outer-border strips

BLOCK ASSEMBLY

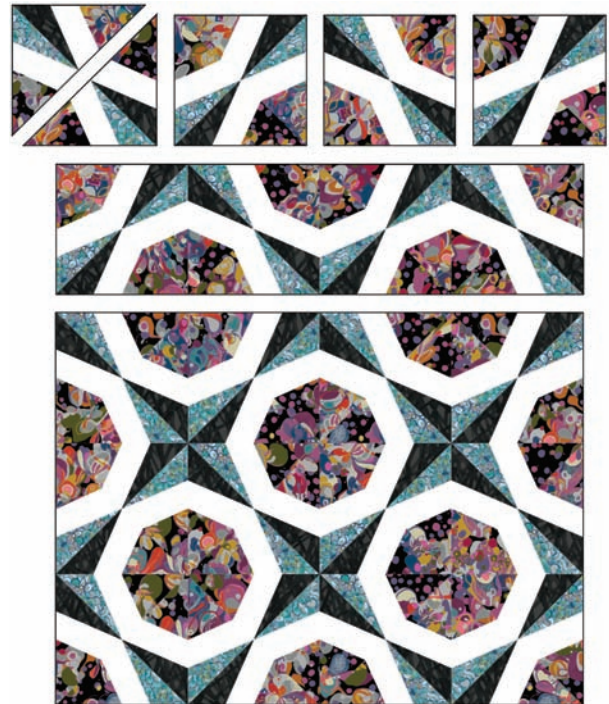
Before you begin stitching, shorten the stitch length on your machine to 16-18 stitches per inch.

1. Make 40 copies of the triangle foundation pattern, making sure the short side of each pattern measures 8" as indicated on the pattern.
2. Paper piece each triangle pattern in numerical order as indicated on the pattern, starting with aa 841 K square. After the triangle unit is complete, trim the excess fabric, leaving a 1/4" seam allowance beyond the outer sewing line on all sides of the unit. Make a total of 40 units.

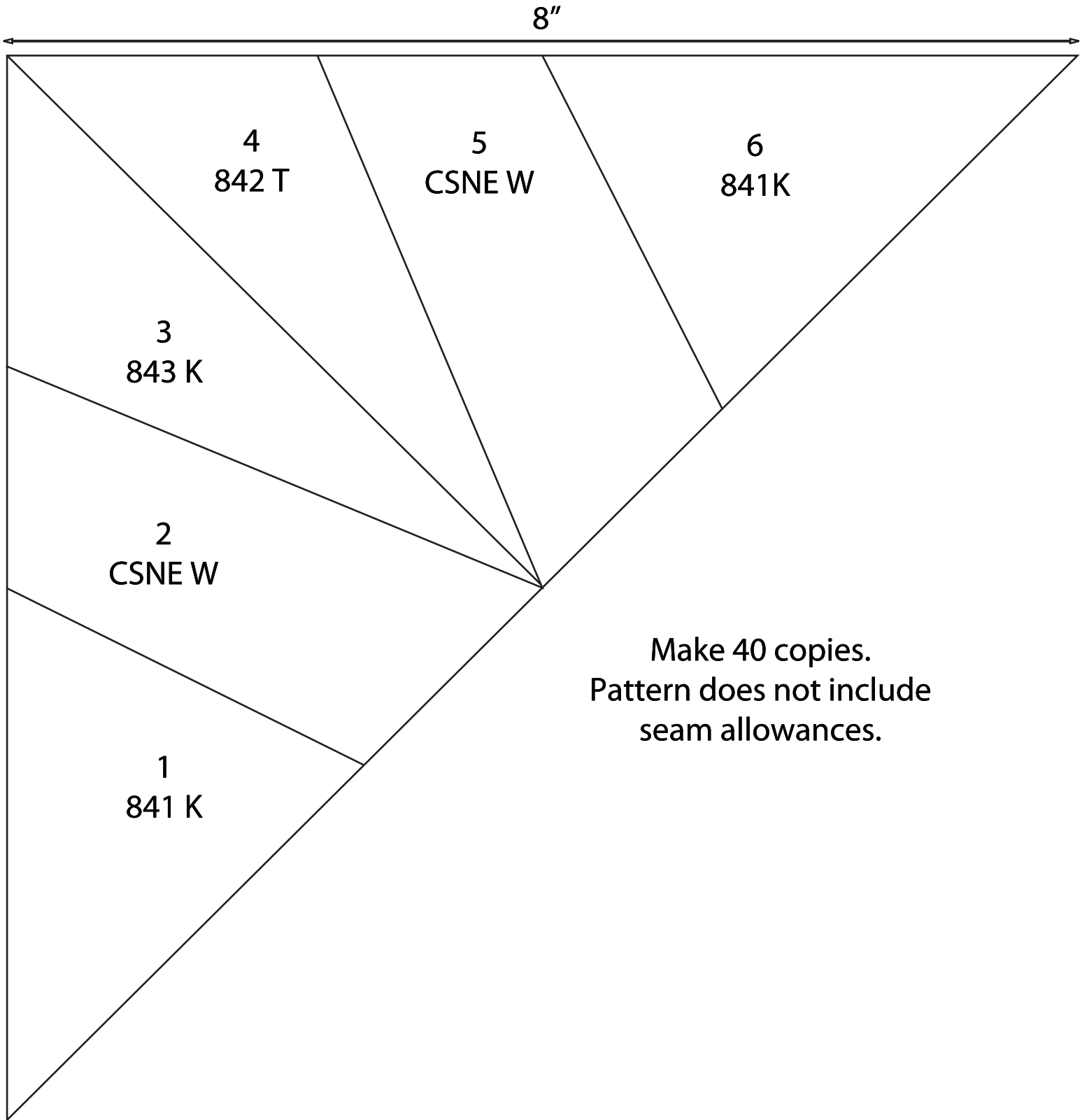
3. Join two triangle units to make an 8 1/2" x 8 1/2" block. Make a total of 20 blocks.

QUILT TOP ASSEMBLY

1. Lay out the blocks in five rows of four blocks each. Join the blocks into rows; join the rows to complete the quilt center.



2. Sew the 843 K 40 1/2"-long inner-border strips to opposite sides of the quilt center. Sew the 843 K 34 1/2"-long inner-border strips to the top and bottom of the quilt center.
3. Sew the CSNE W 42 1/2"-long middle-border strips to opposite sides of the quilt top. Sew the CSNE W 36 1/2"-long middle-border strips to the top and bottom of the quilt top.
4. Sew the 841 K 44 1/2"-long outer-border strips to opposite sides of the quilt top. Sew the 841 K 42 1/2"-long outer-border strips to the top and bottom of the quilt top.
5. Layer the quilt top with batting and backing; baste. Quilt as desired. Using the 843 K 2 1/4"-wide binding strips, bind the edges to finish.



Make 40 copies.
Pattern does not include
seam allowances.

INTERSECTIONS

Fabric Collection by **Lily Martine Baxter**



INTE 841 K



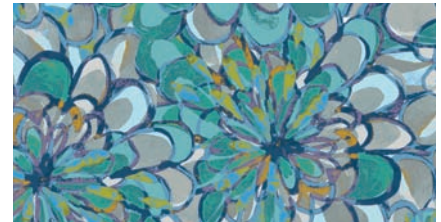
INTE 841 S – shown at 15% scale



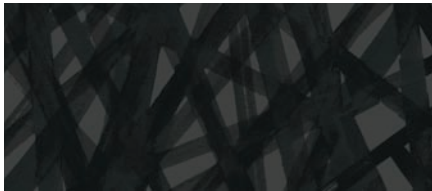
INTE 842 P



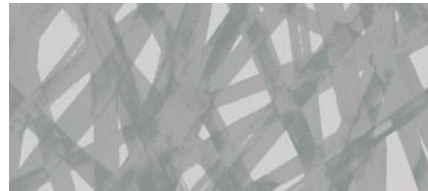
INTE 842 S



INTE 842 T



INTE 843 K



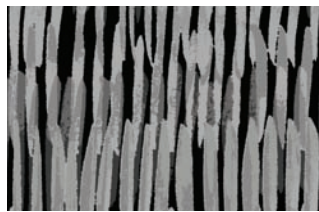
INTE 843 S



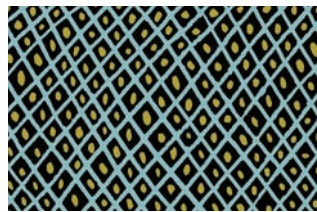
INTE 843 T



INTE 844 MU



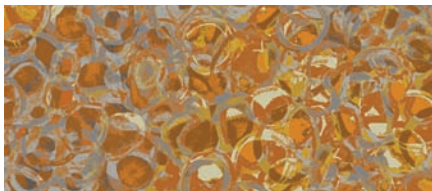
INTE 844 S



INTE 846 K



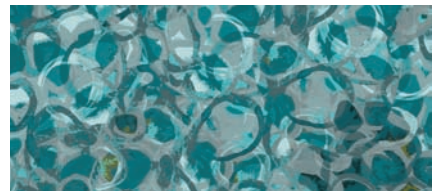
INTE 846 S



INTE 845 AU



INTE 845 F



INTE 845 T



P&B Textiles ♦ www.pbtex.com ♦ 800-351-9087

45-47 Washington St, Pawtucket, RI 02860 ♦ 237 W. 35th St, 11th floor, New York, NY 10001

▲ 100% cotton ♦ Cold wash & dry ♦ 43"/44" ♦ Colors may vary due to printing process

All fabrics shown at 50% scale.