

ORLEANS

Punch Studio



Quilt design by Denise Russart featuring fabrics from the "Orleans" collection by Hoffman California Fabrics



K7135 119G-Vintage Gold



K7136 119G-Vintage Gold



K7137 119G-Vintage Gold



K7138 119G-Vintage Gold

Free pattern available from www.hoffmanfabrics.com

Quilt Size: 78" x 92"

Style	
K7135 119G-Vintage Gold	3/4 yard
K7136 119G-Vintage Gold	3/4 yard
K7137 119G-Vintage Gold	1 1/2 yards
K7138 119G-Vintage Gold	2/3 yard
K7139 33G-Cream Gold	3/4 yard
K7139 6G-Brown Gold	1/2 yard
J9216 155G-Terra Cotta Gold	1/4 yard
J9216 A64G-Antique Tan Gold	1 1/2 yards
G8555 407G-Bark Gold	5/8 yard
G8555 6G-Brown Gold*	1 1/2 yards
G8555 22G-Ivory Gold	1 1/3 yards
Backing-coordinate of your choice	5 1/2 yards

Note: These are estimated yardages. Final yardages will be on pattern.

*Yardage includes binding.

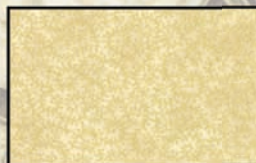
BACKING: Coordinate of your choice. 5 1/2 yards



K7139 6G-Brown Gold



K7139 33G-Cream Gold



J9216 33G-Cream Gold



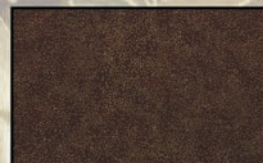
J9216 155G-Terra Cotta Gold



G8555 407G-Bark Gold



G8555 22G-Ivory Gold



G8555 6G-Brown Gold

HOFFMAN FABRICS

CALIFORNIA-INTERNATIONAL

ORLEANS

Punch Studio™



Quilt design by Denise Russart featuring fabrics from the "Orleans" collection by Hoffman California Fabrics



K7135 76S-Pewter Silver



K7136 76S-Pewter Silver



K7137 76S-Pewter Silver

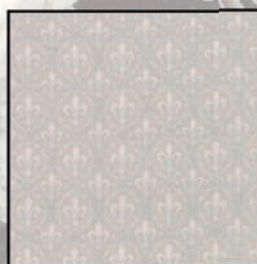


K7138 76S-Pewter Silver

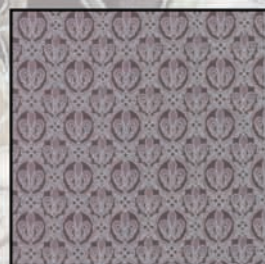
Free pattern available from www.hoffmanfabrics.com

Quilt Size: 78" x 92"

Style	
K7135 76S-Pewter Silver	3/4 yard
K7136 76S-Pewter Silver	3/4 yard
K7137 76S-Pewter Silver	1 1/2 yards
K7138 76S-Pewter Silver	2/3 yard
K7139 134S-Parchment Silver	3/4 yard
K7139 574S-Belle Silver	1/2 yard
J9216 436S-Eucalyptus Silver	1/4 yard
J9216 76S-Pewter Silver	1 1/2 yards
G8555 213S-Onyx Silver	5/8 yard
G8555 55S-Charcoal Silver*	1 1/2 yards
G8555 3S-White Silver	1 1/3 yards
Backing-coordinate of your choice	5 1/2 yards



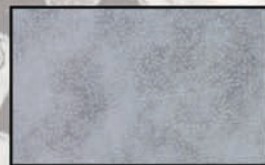
K7139 134S-Parchment Silver



K7139 574S-Belle Silver



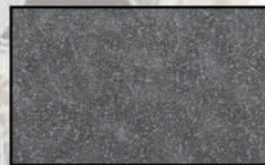
J9216 436S-Eucalyptus Silver



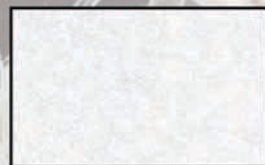
J9216 76S-Pewter Silver



G8555 213S-Onyx Silver



G8555 55S-Charcoal Silver



G0555 3S-White Silver

Note: These are estimated yardages. Final yardages will be on pattern.

*Yardage includes binding.

BACKING: Coordinate of your choice. 5 1/2 yards

HOFFMAN FABRICS
CALIFORNIA-INTERNATIONAL

Fleur De Lis

Designed by Denise Russart for Hoffman California Fabrics' Orleans Collection

Quilt Size: 78" x 92"

Pewter Silver Colorway

Vintage Gold Colorway

Fabric 1: K7135 76s Pewter Silver	3/4 yard	Fabric 1: K7135 119g Vintage Gold	3/4 yard
Fabric 2: K7136 76s Pewter Silver	3/4 yard	Fabric 2: K7136 119g Vintage Gold	3/4 yard
Fabric 3: K7137 76s Pewter Silver	1+1/2 yard	Fabric 3: K7137 119g Vintage Gold	1+1/2 yard
Fabric 4: K7138 76s Pewter Silver	2/3 yard	Fabric 4: K7138 119g Vintage Gold	2/3 yard
Fabric 5: K7139 134s Parchment Silver	3/4 yard	Fabric 5: K7139 33g Cream Gold	3/4 yard
Fabric 6: K7139 574s Belle Silver	1/2 yard	Fabric 6: K7139 6G Brown Gold	1/2 yard
Fabric 7: J9216 436s Eucalyptus Silver	1/4 yard	Fabric 7: J9216 155g Terra Cotta Gold	1/4 yard
Fabric 8: J9216 76s Pewter Silver	1+1/2 yard	Fabric 8: J9216 A64g Antique Gold Tan	1+1/2 yard
Fabric 9: G8555 213s Onyx Silver	5/8 yard	Fabric 9: G8555 407g Bark Gold	5/8 yard
Fabric 10: G8555 55s Charcoal Silver*	1+1/2 yard	Fabric 10: G8555 6g Brown Gold *	1+1/2 yard
Fabric 11: G8555 3s White Silver	1+1/3 yard	Fabric 11: G8555 22g Ivory Gold	1+1/3 yard
Backing – Coordinate of your choice	5+1/2 yard	Backing – Coordinate of your choice	5+1/2 yard

* includes binding yardage

Instructions/images are written showing Pewter Silver colorway. If using Vintage Gold colorway substitute Fabrics 1 through 11 in the chart above for Fabrics 1 through 11 listed in the cutting chart below.

Read all directions before beginning. Use scant 1/4" seam allowances throughout. Press seam allowances open to reduce bulk. Use your favorite applique method to stitching appliques to blocks. Seam allowances are not included in applique patterns; depending on your chosen method of applique, add seam allowances as necessary. Borders wider than 2.5" are sewn with a straight seam rather than on a 45 degree angle. WOF = Width of fabric from selvage to selvage. SC = subcut WOF strips into smaller pieces as indicated.

Fabric 1: K7135 76s Pewter Silver

Cut (2) strips 12.5" x WOF; SC (4) 12.5" x 12.5".

Fabric 2: K7136 76s Pewter Silver

Cut (2) strips 12.5" x WOF; SC (4) 12.5" x 12.5".

Fabric 3: K7137 76s Pewter Silver

Cut (9) strips 5.5" x WOF.

Fabric 4: K7138 76s Pewter Silver

Cut (4) strips 5.5" x WOF.

Fabric 5: K7139 134s Parchment Silver

Cut (2) strips 12.5" x WOF. SC (5) 12.5" x 12.5".

Fabric 6: K7139 574s Belle Silver

Cut (2) strips 6.5" x WOF. SC (8) 6.5" x 6.5".

Fabric 7: J9216 436s Eucalyptus Silver

Cut (5) Template C.

Fabric 8: J9216 76s Pewter Silver

Cut (1) strip 4.5" x WOF. SC (8) 4.5" x 4.5".

Cut (1) strip 8.5" x WOF. SC (16) 1.5" x 8.5".

Cut (1) strip 6.5" x WOF. SC (16) 1.5" x 6.5".

Cut (12) 2.5" x WOF strips (borders).

Fabric 9: G8555 213s Onyx Silver

Cut (1) strip 12.5" x WOF. SC (16) 2.5" x 12.5".

Cut (1) strip 8.5" x WOF. SC (16) 2.5" x 8.5".

Fabric 10: G8555 55s Charcoal Silver

Cut (1) strip 6.5" x WOF. SC (16) 1.5" x 6.5".

Cut (1) strip 4.5" x WOF. SC (16) 1.5" x 4.5".

Cut (2) strips 6.5" x WOF. SC (8) 6.5" x 6.5".

Cut (9) 2.5" x WOF strips (binding).

From remaining fabric, cut (5) Template B and (5) Reverse B.

Fabric 11: G8555 3s White Silver

Cut (8) strips 2.0" x WOF (borders).

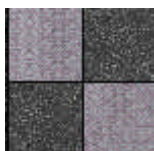
Cut (32) Template A.

Cut (5) Template D.

Sewing Instructions:



Fleur de Lis blocks [FDL]: Using favorite applique method, applique Template B, Template B reversed, followed by Template C and finally Template D onto Fabric 5 background squares. Make a total of 5 Fleur de Lis blocks.



Four-Patch Blocks [4P]: Using Fabric 6 and Fabric 10 6.5" x 6.5" squares, stitch one Fabric 6 square to one fabric 10 square. Then join two pairs making a four-patch block. Make a total of 4 Four-Patch blocks.



Starlight Cabin Blocks [SCB]: Stitch a 1.5 x 4.5" Fabric 10 piece to left and right side of 4.5" Fabric 8 square. Add 1.5" x 6.5" Fabric 10 piece to top and bottom of block. Next add 1.5" x 6.5" Fabric 8 pieces to left and right of block, then add 1.5" x 8.5" Fabric 8 pieces to top and bottom. Next add 2.5" x 8.5" Fabric 9 piece to left and right of block, followed by 2.5" x 12.5" Fabric 9 to top and bottom. Press block into quarters or mark lightly with chalk pencil so you have center lines to follow. Align template A pieces so they are centered along placement lines and applique in place. Make a total of 8 Starlight Cabin blocks.

Layout center of quilt following full quilt diagram and the placement below. Fabric numbers below refer to the 12.5" squares cut of those fabrics. Stitch into rows and stitch rows to each other.

Horizontal Row 1:	FDL Block	-	Fabric 2	-	SCB Block	-	Fabric 1	-	FDL Block
Horizontal Row 2:	Fabric 1	-	SCB Block	-	4P Block	-	SCB Block	-	Fabric 2
Horizontal Row 3:	SCB Block	-	4P Block	-	FDL Block	-	4P Block	-	SCB Block
Horizontal Row 4:	Fabric 2	-	SCB Block	-	4P Block	-	SCB Block	-	Fabric 1
Horizontal Row 5:	FDL Block	-	Fabric 1	-	SCB Block	-	Fabric 2	-	FDL Block

Stitch (2) Fabric 8 border strips end to end and then SC into (2) pieces 60.5" long. Repeat with two more strips and then stitch the 60.5" border pieces to top and bottom of quilt.

Join (2) Fabric 4 strips end to end, SC 60.5" long. Repeat with other two strips and stitch to top and bottom of quilt.

Stitch (2) Fabric 8 border strips end to end, SC 74.5" long. Repeat with two more strips and stitch these to left and right of quilt.

Stitch (2) Fabric 8 border strips end to end, SC 64.5" long. Repeat with two more strips and sew these borders to top and bottom of quilt.

Stitch Fabric 11 border strips into four strips of two strips each. SC two of these borders 78.5" long and add to left and right of quilt. Trim remaining two borders 67.5" long and add to top and bottom.

Stitch (5) Fabric 3 border strips end to end. SC into two pieces, each 81.5" long and stitch to left and right of quilt.

Stitch remaining Fabric 3 border strips into two border sections of two strips each. Trim these sections 77.5" long and stitch to top and bottom of quilt.

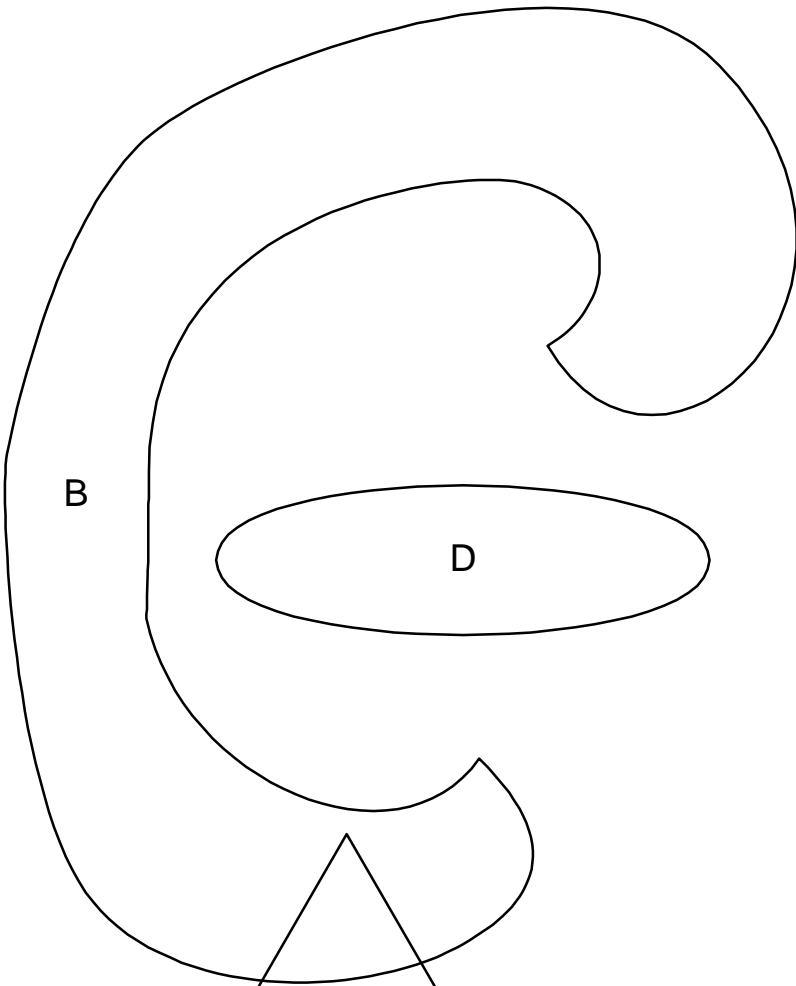
Binding: Join all binding strips on a 45 degree angle, trim excess fabric away leaving scant 1/4" seam allowance and press seam open. Then press all binding in half lengthwise to make double-fold binding.

Backing: Backing fabric should be cut into two pieces, each 2+3/4 yards long and seamed vertically.

Layer, quilt, bind and enjoy!

Denise

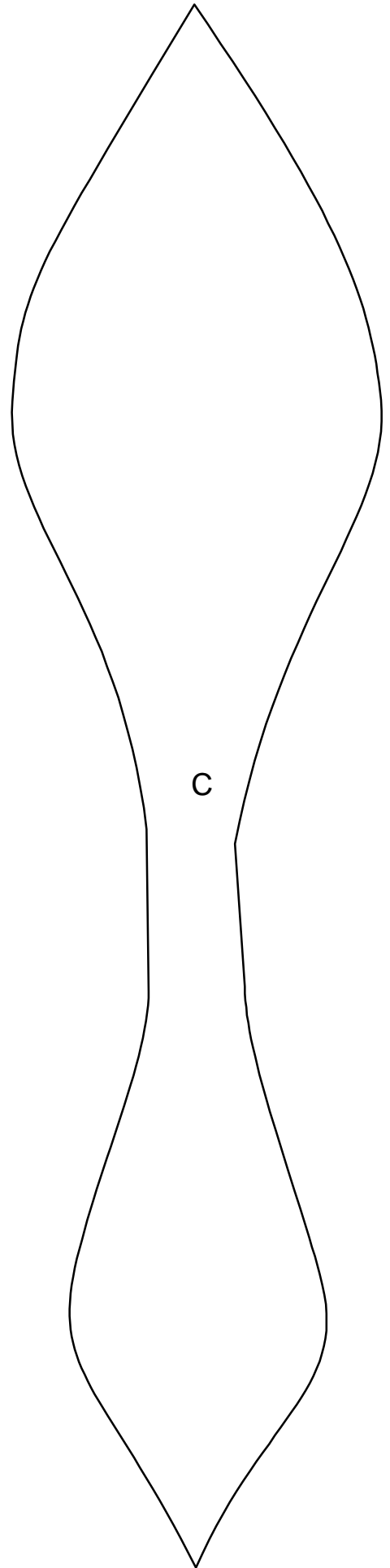
justquiltin.wordpress.com



B

D

A



C

