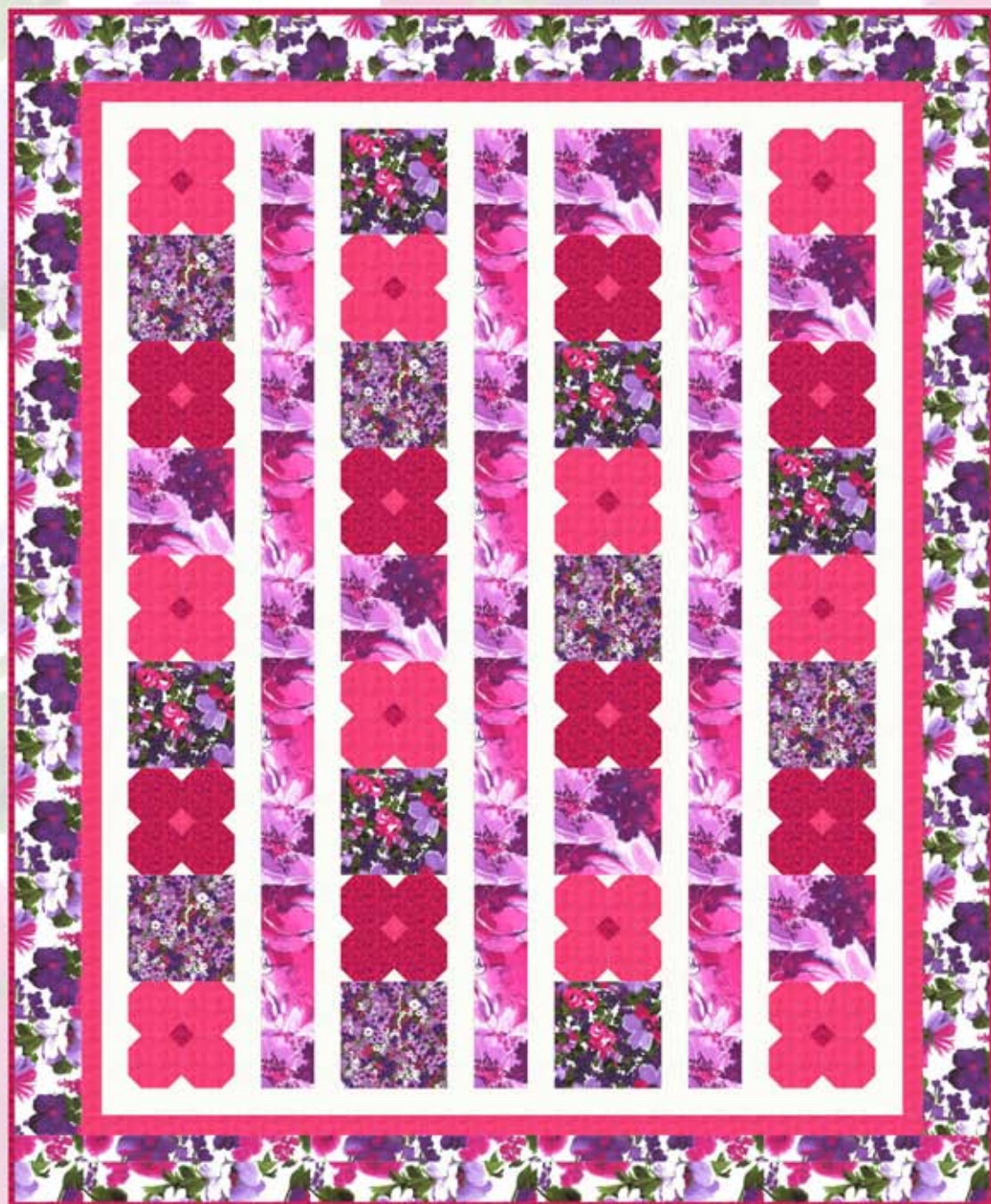


PARADISE BLOOMS

Quilt Design by Denise Russart Featuring fabrics from the "Paradise Blooms" Collection by Hoffman California Fabrics



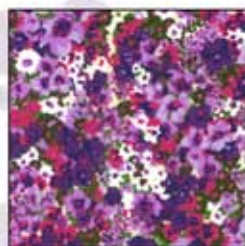
K3304 #23 Fuchsia



K3305 #23 Fuchsia



K3306 #23 Fuchsia



K3307 #23 Fuchsia



1895 #434 Radish



1895 #316 Clownfish

Quilt Size: 74" x 90"

Free pattern available from www.HoffmanFabrics.com

HOFFMAN FABRICS
CALIFORNIA INTERNATIONAL

View us! <http://hoffmanfabrics.com/>

Like us! www.facebook.com/HoffmanCaliforniaFabrics

Follow us! <https://twitter.com/#!/HoffmanFabrics>

Pin us! <http://pinterest.com/hoffmanfabrics/>

“Paradise Blooms” featuring fabrics by Hoffman California Fabrics

Yardage Chart

Fuchsia Colorway	Iris Colorway	Hibiscus Colorway	
K3304 23-Fuchsia	K3304 40-Iris	K3304 519-Hibiscus	1 ½ yards
K3305 23-Fuchsia	K3305 40-Iris	K3305 519-Hibiscus	1 ¼ yards
K3306 23-Fuchsia	K3306 40-Iris	K3306 519-Hibiscus	½ yard
K3307 23-Fuchsia	K3307 40-Iris	K3307 519-Hibiscus	½ yard
1895 434-Radish	1895 136-Peacock	1895 359-The OC	1 ¼ yards
1895 316-Clownfish *	1895 123-Lapis *	1895 192-Pumpkin *	1 ¼ yards
WH-2 3-White (60" wide)	WH-2 3-White (60" wide)	WH-2 3-White (60" wide)	1 yard

*Yardage includes binding.

BACKING: Coordinate of your choice. 5 ¼ yards (1 kit); 63 yards (12 kits)

Iris



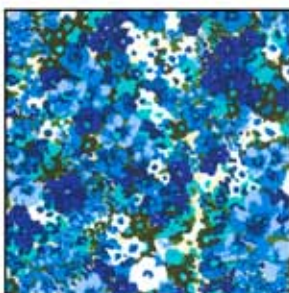
K3304 #40 Iris



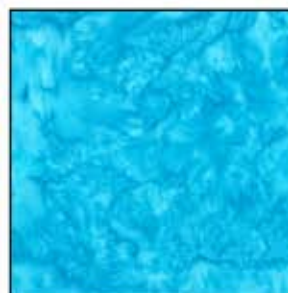
K3305 #40 Iris



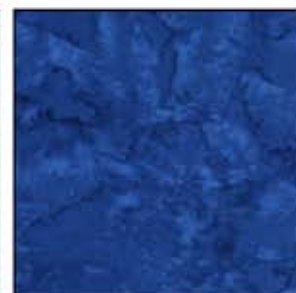
K3306 #40 Iris



K3307 #40 Iris



1895 #136 Peacock



1895 #123 Lapis

Hibiscus



K3304 #519 Hibiscus



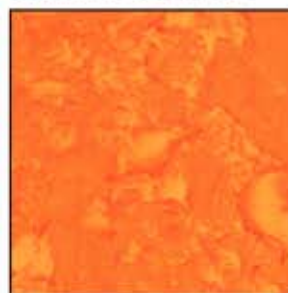
K3305 #519 Hibiscus



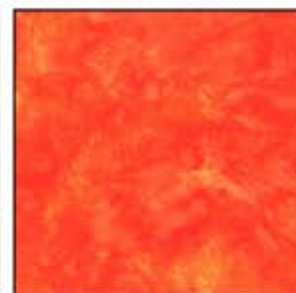
K3306 #519 Hibiscus



K3307 #519 Hibiscus



1895 #359 The OC



1895 #192 Pumpkin

View swatches and download quilt patterns at www.hoffmanfabrics.com

To see more quilts designed by Denise go to www.justquiltin.wordpress.com

SPRINGTIME IN PARADISE

Quilt design by Denise M. Russart for
Hoffman California Fabrics -- Paradise Blooms Collection

Quilt Dimensions: 74" x 90"

	Yardage	IRIS COLORWAY	FUCHSIA COLORWAY	HIBISCUS COLORWAY
1	1+1/3	K3304 40-Iris	K3304 23-Fuchsia	K3304 519-Hibiscus
2	1+1/4	K3305 40-Iris	K3305 23-Fuchsia	K3305 519-Hibiscus
3	1/2	K3306 40-Iris	K3306 23-Fuchsia	K3306 519-Hibiscus
4	1/2	K3307 40-Iris	K3307 23-Fuchsia	K3307 519-Hibiscus
5	1+1/4	1895 136 Peacock	1895 434 Radish	1895 359 the OC
6	1+1/4	1895 123 Lapis*	1895 316 Clownfish*	1895 192 Pumpkin*
7	1+1/4	WH-2 3-White (60" wide)	WH-2 3-White (60" wide)	WH-2 3-White (60" wide)
8	5+1/4	Backing Coordinate of your choice	Backing Coordinate of your choice	Backing Coordinate of your choice

* includes binding yardage

Read all instructions carefully before beginning. Use scant 1/4" seam allowance throughout. I press seams open to reduce bulk.

WOF = width of fabric from selvage to selvage

SC= subcut strips into smaller pieces indicated

Images below are shown in the Iris Colorway. Label all pieces as you cut them with the letter in [brackets] to aid in layout later.

★Draw a diagonal line on the back of pieces marked with a star.

Cutting Instructions:

Fabric 1: Cut (8) strips 5.5" x WOF [A]

Fabric 5: Cut (5) strips 4.5" x WOF; SC (40) 4.5"x4.5" [F]

Cut (2) strips 1.5" x WOF; SC (32) 1.5" squares ★

Fabric 2: Cut (6) strips 4.5" [B]

Cut (8) 2.0" x WOF strips. [Border 1]

Cut (2) strips 8.5" x WOF; SC (6) 8.5" x 8.5" [C]

Fabric 6 Cut (4) strips 4.5" x WOF; SC (32) 4.5"x4.5" [G]

Cut (2) strips 1.5" x WOF, SC (40) 1.5" squares★

Fabric 3: Cut (2) strips 8.5" x WOF;

SC (6) 8.5" x 8.5" [D]

Cut (9) strips 2.5" x WOF [Binding]

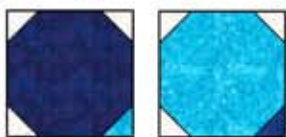
Fabric 4: Cut (2) strips 8.5" x WOF;

SC (6) 8.5" x 8.5" [E]

Fabric 7: Cut (13) strips 2.5" x WOF [H]

Cut (6) strips 1.5" x WOF; SC (216) 1.5" squares ★

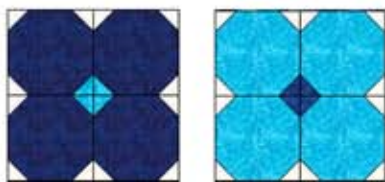
Piecing Instructions:



You will be using the Stitch and Flip method to make the flower block pieces by aligning a small square on the corner of a larger block right sides together, stitch along the dotted line, flip corner up, press seam allowance and trim away excess layers.

Flower 1 Flower 2 To make Flower 1, use pieces G and add three white★ 1.5" squares and one Fabric 5★ 1.5"

square. Make 32. Repeat steps for Flower 2, using pieces F, white★1.5" squares and Fabric 6★ 1.5" squares. Make 40.

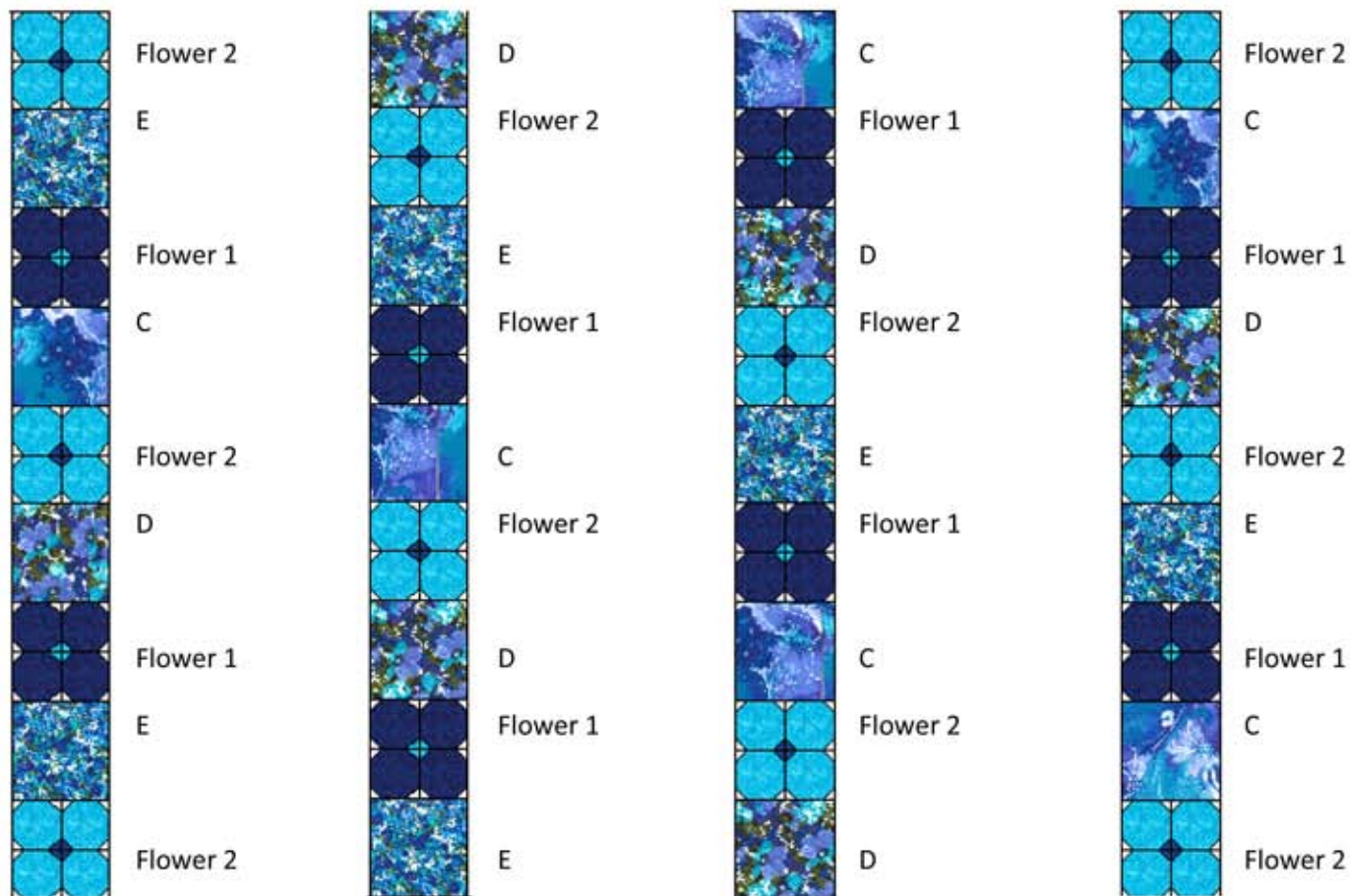


Stitch four like blocks together with the colored corner making the center of the flower and stitch together. Make 8 Flower 1 Blocks and 10 Flower 2 blocks.

Next using your B strips, stitch two together to make one long strip. Stitch using either a straight seam or a 45 degree angle seam, whichever will look less noticeable when looking at the two pieces you are joining. Repeat with all B strips to make three long sections of two strips each. Trim each strip 72.5" long. Label as [B].

Using the H strips, stitch them all together along a 45 degree angle to make one very long continuous strip. From this strip you will need to subcut 8 strips 72.5" long (mark these as [H]) and two 60.5" long pieces [J].

Stitch an H strip to left and right sides of three B strips and set aside. Then lay out vertical rows as shown below. Sew the sections of each vertical row together.



Stitch the three H/B combination strips in between the rows above and then add a 72.5" H strip to the left and right side of the quilt. Stitch the two J strips to the top and bottom. Stitch the Border 1 strips into four border sections of two strips each. Trim two strips to 76.5" and stitch to left and right of quilt. Trim remaining two sections to 63.5" and add to top and bottom.

Stitch A strips into pairs to make four border strips of two strips each. Cut two 79.5" long and add to left and right of quilt. Trim remaining two to 73.5" and add to top and bottom.

Binding: Join all strips on 45 deg. angle to each other, press seam open, press strips in half lengthwise for double fold binding.

Backing Fabric: Cut backing fabric into two pieces 2-5/8" long and seam along long edge.