

America

Fabric Collection by P&B Textiles

FREE PATTERN
Ask for our fabrics
in your local
independent
quilt shop!



Patriot Proud quilt by Janet Mednick
Quilt Size: 60" square • Block Size: 12" square



pbtex.com

Patriot Proud

Quilt by Janet Mednick using the *America* fabric collection by P&B Textiles

Quilt Size: 60" square • Block Size: 12" square

Yardage

AMER 412 MU	1 1/4 yards
AMER 413 N	3/4 yard
AMER 413 R	1 yard
AMER 414 E	7/8 yard
AMER 416 N	1/3 yard
AMER 417 E	7/8 yard
AMER 417 MU	1/2 yard
AMER 419 B	1/2 yard
AMER 419 R	3/8 yard
BACKING	4 yards

Cutting

From AMER 412 MU, cut:

- (4) 6 1/2" squares
- (6) 5" x 42" outer-border strips

From AMER 413 N, cut:

- (10) 3 7/8" x 42" strips; cut into (48) 3 7/8" squares.
Cut the squares in half diagonally to yield 96 triangles

From AMER 413 R, cut:

- (3) 3 7/8" x 42" strips; cut into (24) 3 7/8" squares.
Cut the squares in half diagonally to yield 48 triangles
- (7) 2 1/4" x 42" binding strips

From AMER 414 E, cut:

- (1) 7 1/4" x 42" strip; cut into (4) 7 1/4" squares.
Cut the squares into quarters diagonally to yield 16 triangles
- (1) 3 7/8" x 42" strip; cut into (8) 3 7/8" squares.
Cut the squares in half diagonally to yield 16 triangles
- (2) 4 1/4" x 42" strips; cut into (16) 4 1/4" squares.
Cut the squares into quarters diagonally to yield 64 triangles
- (4) 2" x 42" strips; cut into (64) 2" squares

From AMER 416 N, cut:

- (1) 3 7/8" x 42" strip; cut into (16) 3 7/8" squares.
Cut the squares in half diagonally to yield 32 triangles

From AMER 417 E, cut:

- (2) 3 7/8" x 42" strips; cut into (16) 3 7/8" squares;
Cut squares in half diagonally to yield 32 triangles
- (2) 7 1/4" x 42" strips; cut into (8) 7 1/4" squares.
Cut the squares into quarters diagonally to yield 32 triangles
- (1) 4 1/4" x 42" strip; cut into (8) 4 1/4" squares.
Cut the squares into quarters diagonally to yield 32 triangles

From AMER 417 MU, cut:

- (6) 2" x 42" inner-border strips

From AMER 419 B, cut:

- (1) 4 1/4" x 42" strip; cut into (8) 4 1/4" squares.
Cut the squares into quarters diagonally to yield 32 triangles
- (2) 3 1/2" x 42" strips; cut into (16) 3 1/2" squares

From AMER 419 R, cut:

- (4) 2 3/8" x 42" strips; cut into (64) 2 3/8" squares.
Cut the squares in half diagonally to yield 128 triangles

Making Block A

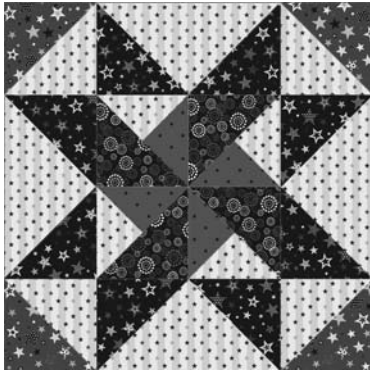
Press the seam allowances toward the darker fabric throughout.

1. Sew a 413 R triangle to the long side of each 417 E 3 7/8" triangle to make 32 half-square-triangle units.
2. Sew 413 N triangles to each short side of a 417 E 7 1/4" triangle to make a flying-geese unit. Repeat to make a total of 32 units.
3. Lay out one 419 B triangle, one 417 E 4 1/4" triangle, and one 416 N triangle as shown. Join the smaller triangles along one short edge. Then join the triangular unit to the navy triangle along their long edges to complete a center unit. Repeat to make 32 units, making sure the triangles are oriented correctly in each unit. (This will ensure the center pinwheels will all "spin" in the same direction.)



4. Arrange four units from step 3 as shown in the block diagram. Sew the units into rows and then join the rows to complete a pinwheel unit. Repeat to make a total of eight units.

5. Arrange one pinwheel unit, four flying-geese units, and the four half-square-triangle units as shown in the Block A diagram. Join the pieces into rows and then join the rows to complete the block. The block should measure 12 1/2" square. Repeat to make a total of eight A blocks.



Block A: Make 8

Making Block B

6. Join 413 R triangles and 414 E 3 7/8" triangles along their long edges to make 16 half-square-triangle units.

7. Sew 413 N triangles to each short side of a 414 E 7 1/4" triangle to make a flying-geese unit. Repeat to make a total of 16 units.

8. Lay out four half-square-triangle units, four flying-geese units, and one 412 MU square as shown in the block diagram. Join the pieces into rows and then join the rows to complete block B. The block should measure 12 1/2" square. Repeat to make a total of four B blocks.



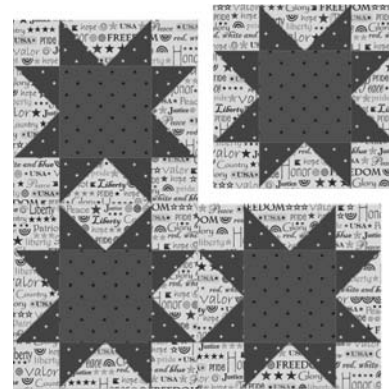
Block B: Make 4

Making Block C

9. Sew 419 R triangles to each short side of a 414 E 4 1/4" triangle to make a flying-geese unit. Repeat to make a total of 64 units.

10. Lay out four flying-geese units from step 9, four 414 E squares, and one 419 B square in a Sawtooth Star arrangement. Join the units into rows and then join the rows to make a quadrant unit. The unit should measure 6 1/2" square. Repeat to make 16 small stars.

11. Lay out four small stars in a four-patch arrangement as shown in the block C diagram. Join the stars into rows and then join the rows to complete block C. The block should measure 12 1/2" square. Repeat to make four blocks.



Block C: Make 4

Assembling the Quilt Top

12. Arrange the blocks in four rows of four blocks each, referring to the photo for placement guidance. Join the blocks into rows and then join the rows.

13. Join the 2"-wide 417 MU strips end to end to make a long strip. Measure the length of the quilt top. Cut two strips to this length and sew them to the sides of the quilt top. Measure the width of the quilt top. Cut two strips to this length and sew them to the top and bottom of the quilt top for the inner border.

14. Join the 5"-wide 412 MU strips end to end. In the same manner as before, measure, cut, and sew the strips to the quilt top for the outer border.

15. Layer the quilt top with batting and backing; baste. Quilt as desired. Using the 2 1/4"-wide binding strips, bind the edges to finish.

America

Metallic Accent Collection by 



AMER 411 B*



AMER 411 E*



AMER 412 MU*



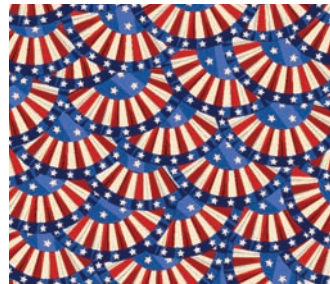
AMER 414 E*



AMER 413 N*



AMER 413 R*



AMER 415 MU



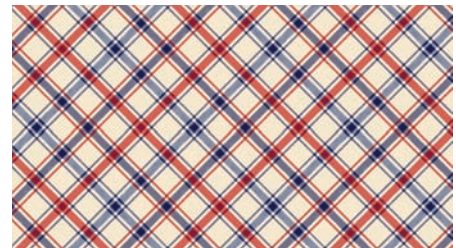
AMER 416 N*



AMER 417 E*



AMER 417 MU*



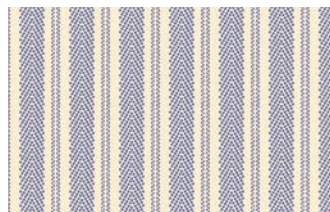
AMER 418 MU



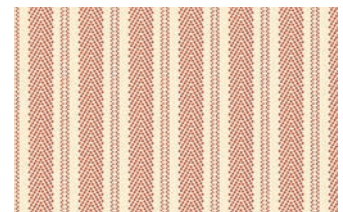
AMER 419 B



AMER 419 R



AMER 420 B



AMER 420 R

P&B Textiles ♦ 1580 Gilbreth Road, Burlingame, CA 94010 ♦ 800-852-2327

For wholesale orders: 14683 Midway Road, Addison, TX 75001 ♦ 800-351-9087 ♦ www.pbtex.com



100% cotton ♦ Cold wash & dry ♦ 43"/44" ♦ Colors may vary due to printing process ♦ 12/12

All fabrics shown at 75% scale. *Fabric with metallic accents