

RIBBONS & HOLLY

Quilt design by Jenice Belling of Quilted Garden featuring fabrics from the "Ribbons & Holly" collection by Hoffman California Fabrics



Free pattern available from www.hoffmanfabrics.com

Quilt Size 62" x 77"

HOFFMAN FABRICS
CALIFORNIA-INTERNATIONAL

“Ribbons & Holly” by Hoffman California Fabrics.

Quilt design by Jenice Belling. www.quiltedgarden.com

Yardage Chart

Style	
K7181 Black/Gold #4G	¾ yards
K7182 Cream/Gold #33G	2 yards
K7183 Black/Gold #4G	1 ¼ yards
K7183 Cream/Gold #33G	1 yard
K2541 Cherry #403	⅝ yard
G8555 Grass/Gold #115G	⅞ yard
G8555 Leaf/Gold #178G	⅓ yard
G8555 Hunter/Gold #60 G*	⅝ yard
K7181 Cream/Gold #33G**	4 ⅔ yards

*Yardage includes binding.

**BACKING



K7181 Black/Gold #4G



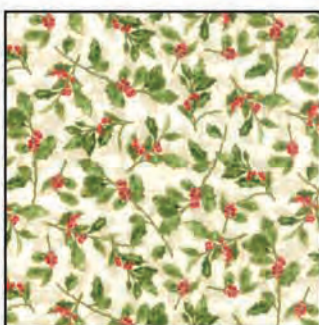
K7181 Cream/Gold #33G**



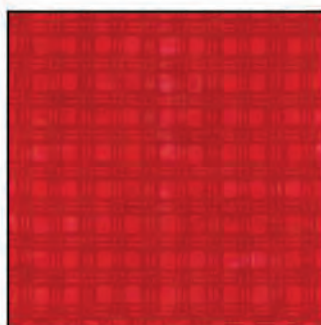
K7182 Cream/Gold #33G



K7183 Black/Gold #4G



K7183 Cream/Gold #33G



K2541 Cherry #403



G8555 Grass/Gold #115G



G8555 Leaf/Gold #178G



G8555 Hunter/Gold #60G

View swatches and download quilt patterns at www.hoffmanfabrics.com

Ribbons & Holly

Finished size 60" x 70"

Quilted Garden Designs by Jenice Belling

618-656-6538

quiltedgarden@quiltedgarden.com

www.quiltedgarden.com

Fabric Requirements

<i>Fabric</i>	<i>Placement</i>	<i>SKU</i>	<i>Amount</i>
Fabric A	Focus Blocks	K7181 4G black/gold	3/4 YD
Fabric B	Ribbon around Focus Blocks	G8555 115G grass/gold	7/8 YD
Fabric C	Focus Block Background Outer Border Ribbon	K7183 33G cream/gold	1 YD
Fabric D	Focus Block Corners Outer Border Background	K7183 4G black/gold	1 1/8 YD
Fabric E	Outer Border Ribbon	K2541 403 cherry	5/8 YD
Fabric F	Border I & III	K7182 33G cream/gold	2 YD cut on length
Fabric G	Border II	G8555 178G leaf/gold	1/3 YD cut selvage to selvage
Fabric H	Binding	G8555 60G hunter/gold	5/8 YD
Fabric I	Backing	K7181 33G cream/gold	4 2/3 yd pieced on length

CUT~

Fabric A ~

Focus Block

(24) 4 7/8" x 4 7/8" squares, subcut into (48) triangles

(12) 4 1/2" x 4 1/2" squares for center



Fabric B ~

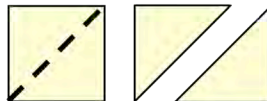
Ribbon around Focus Blocks

(24) 4 7/8" x 4 7/8" squares, subcut into (48) triangles

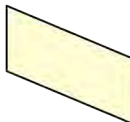


Fabric C ~**Focus Block Background**

(24) 4 7/8" x 4 7/8" squares, subcut into (48) triangles

**Outer Border Ribbon**

(3) 5 1/2" strips, use Template A to cut (24) pieces

** These pieces MUST be cut directionally as shown~***Fabric D ~****Focus Block Corners**

(48) 2" x 2" squares

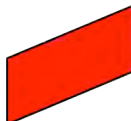
**Outer Border Background**

(48) 3 3/8" x 6 3/8", subcut into (96) triangles

(4) 5 1/2" x 5 1/2" squares for outer border corners

**Fabric E ~****Outer Border Ribbon**

(3) 5 1/2" strips, use Template B to cut (24) pieces

** These pieces MUST be cut directionally as shown~***Outer Border Corners**

(4) 2 7/8" x 2 7/8" squares

**Fabric F ~**** Cut in this order***Border III** ~ (2) 3 1/2" x 70 1/2" for sides *Cut on the length (along the selvages)***Border I** ~ (2) 3 1/2" x 57 1/2" for sides *Cut on the length (along the selvages)*

*From the remainder of the fabric, cut top and bottom borders **across the width**, per fabric design. These will be pieced to create each border. There will be enough fabric to match motifs. (Place seam away from the center of border as shown so it is not obvious)*

Border III ~ (2) 5 1/2" x 44 1/2" for top and bottom (pieced)**Border I** ~ (2) 5" x 36 1/2" for top and bottom (pieced)**Fabric G ~****Border II:** *Cut across the width (selvage to selvage)*

(2) 2" x 42 1/2" for top and bottom



(3) 1 1/2" x width of fabric for sides. Now sew together end to end, press seam allowances open. Then cut (2) 1 1/2" x 60 1/2" from this long strip.

**Fabric H ~****Binding**

(7) 2 1/2" strips from selvage to selvage

**Fabric I ~****Backing**(2) 84" x width of fabric. *Trim away selvages and sew the (2) lengths together. Press seam allowance open.*

SEW~

All seam allowances are 1/4"

Press seam allowances toward the darker fabric unless otherwise directed

SA – seam allowance

RST – right sides together

WST – wrong sides together

1. Make Blocks for center of quilt. Create ONE center blocks as follows:

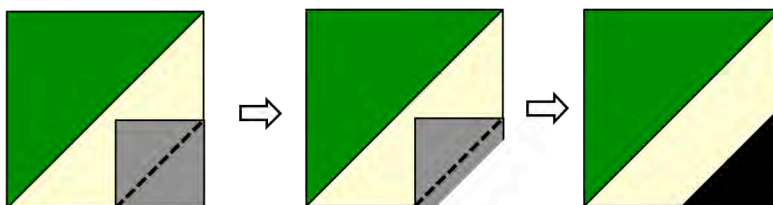
- Sew (4) Fabric A Focus triangles to (4) Fabric B Inside Ribbon triangles, stitch along the long sides. Press SA toward Fabric B (ribbon).



- Sew (4) Fabric B Inner Ribbon triangles to (4) Fabric C Block Background triangles, stitch along the long sides. Press SA toward Fabric B (ribbon).



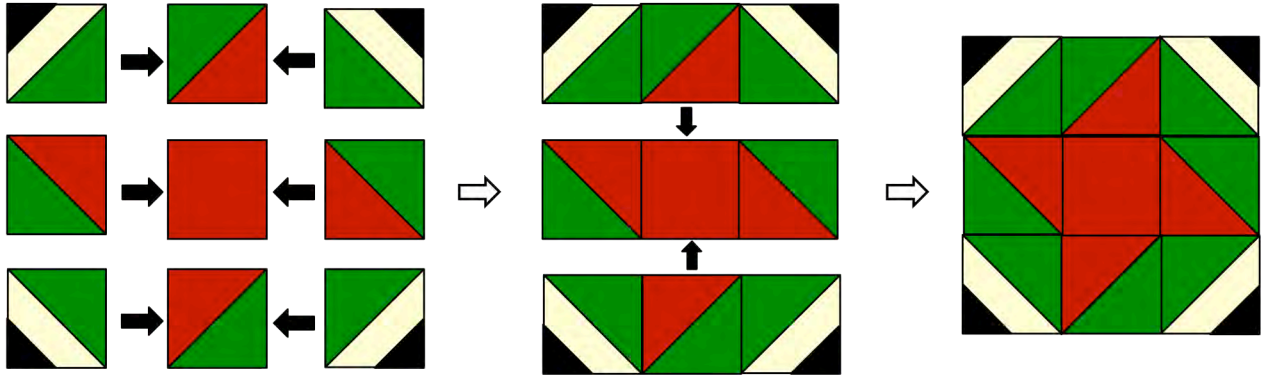
- Mark (1) 2" x 2" Fabric D square from corner to corner for stitching lines. Now place RST to the corner of background/ribbon section just sewn. Stitch along marked line. Trim away outside 'triangle' as shown.



- Make (4) of this section.
Press SA toward dark fabric on (2) and toward the light fabric on the other (2).
Why ~ so SA's will oppose one another and nest well as blocks are sewn together~



- Now using (1) 4 ½" Fabric A Focus square for the center and the blocks just made, arrange and sew together as shown~ Press SA's toward Fabric B (ribbon), or press open for a flatter seam.

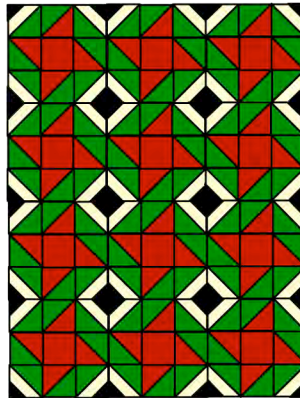


Good job!

Your block should measure 12 ½" x 12 ½"

Now make (11) more for a total of (12)

- Sew your twelve blocks together in (4) rows of (3) blocks each as shown. Press SA's for each row in opposite directions so they will nest with the next row...



Good job!

Your quilt should measure 36 ½" x 48 ½"

- Add Borders:

Border I Using Fabric F~

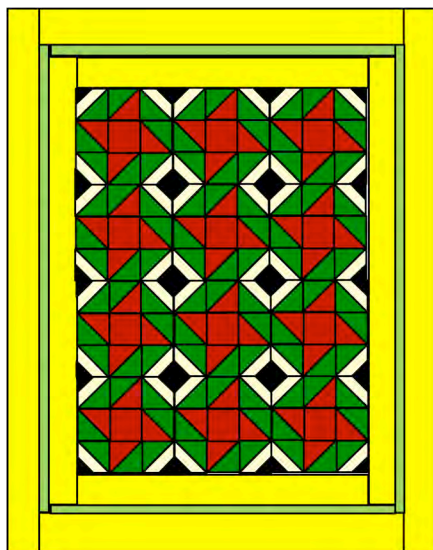
Add the (2) 5" x 36 ½" top and bottom borders first, then add (2) 3 ½" x 57 ½" to the sides. Press SA's toward the borders.

Border II Using Fabric G~

Add (2) 2" x 42 1/2" top and bottom borders first, then add (2) 1 1/2" x 60 1/2" to the sides. Press SA's toward darker border.

Border III Using Fabric F~

Add (2) 5 1/2" x 44 1/2" top and bottom borders first, then add (2) 3 1/2" x 70 1/2" to the sides. Press SA's toward border II.



Good job!

Your quilt should measure 50 1/2" x 70 1/2"

Outer Border~

1. Create the ribbon blocks as follows:

Using (48) Fabric D Background triangles and (24) Fabric C ribbons, stitch together centering the ribbon between (2) background triangles. Press SA toward the background. Trim away dogears. Make (24) total.



Repeat using (48) Fabric D Background triangles and (24) Fabric E ribbons. Press SA toward the ribbon. Make (24) total

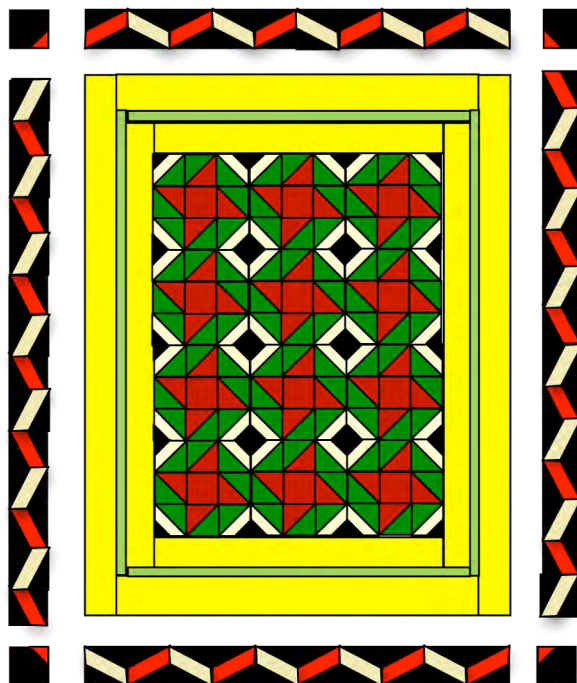


2. Create the corner blocks as follows:

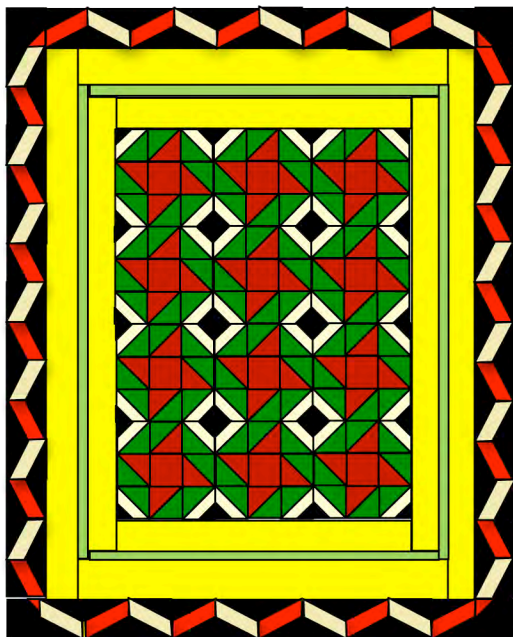
Use (1) 5 1/2" x 5 1/2" Fabric D Background square and (1) 2 7/8" x 2 7/8" Fabric E ribbon square. Mark the 2 7/8" Fabric E square from corner to corner for stitching line. Now place RST to the corner of background section and stitch along marked line. Trim and press SA toward dark fabric. Make (4) total.



2. Following the diagram, sew ribbon blocks together to form top, bottom and side borders. The SA's will nest making the ribbon blocks easier to piece together.



3. Sew borders and corners to quilt. Press SA's toward Border III.



4. Layer, baste, quilt and bind.

*Good Job!!!
Enjoy your beautiful quilt.*

Ribbons and Holly
Created for Hoffman of California Fabrics

Quilted Garden Designs
by *Jenice Belling*
www.quiltedgarden.com

